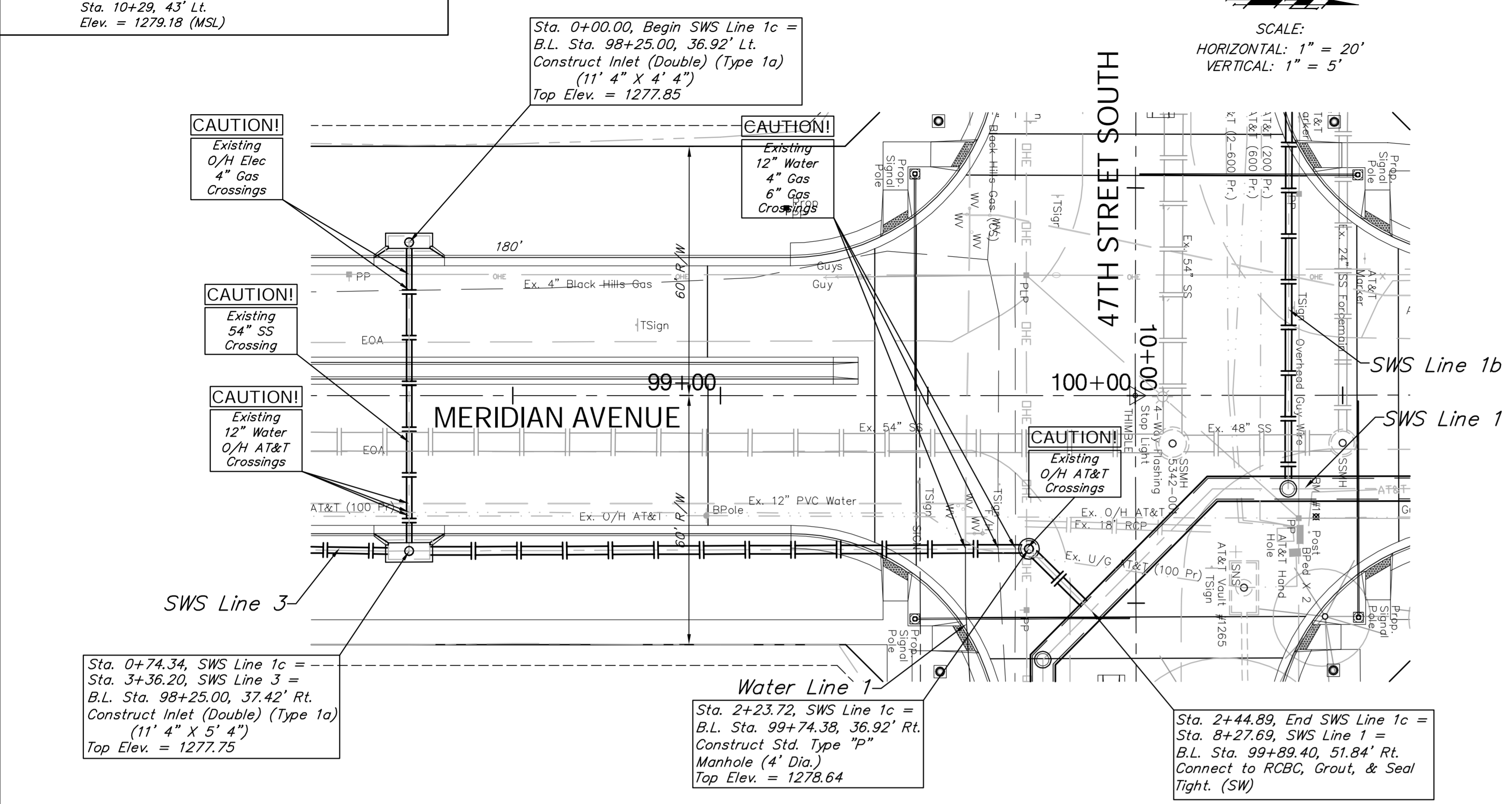
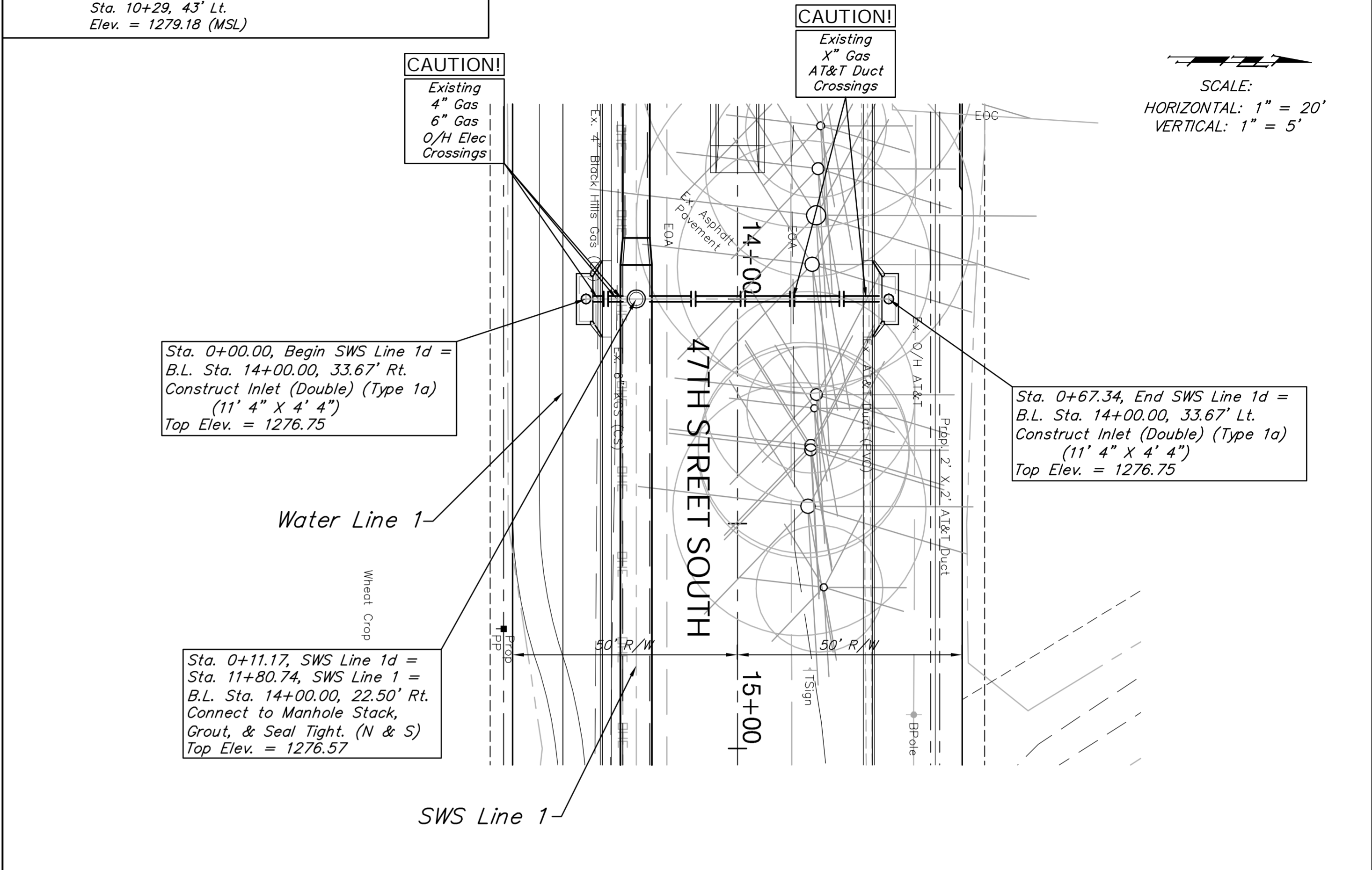


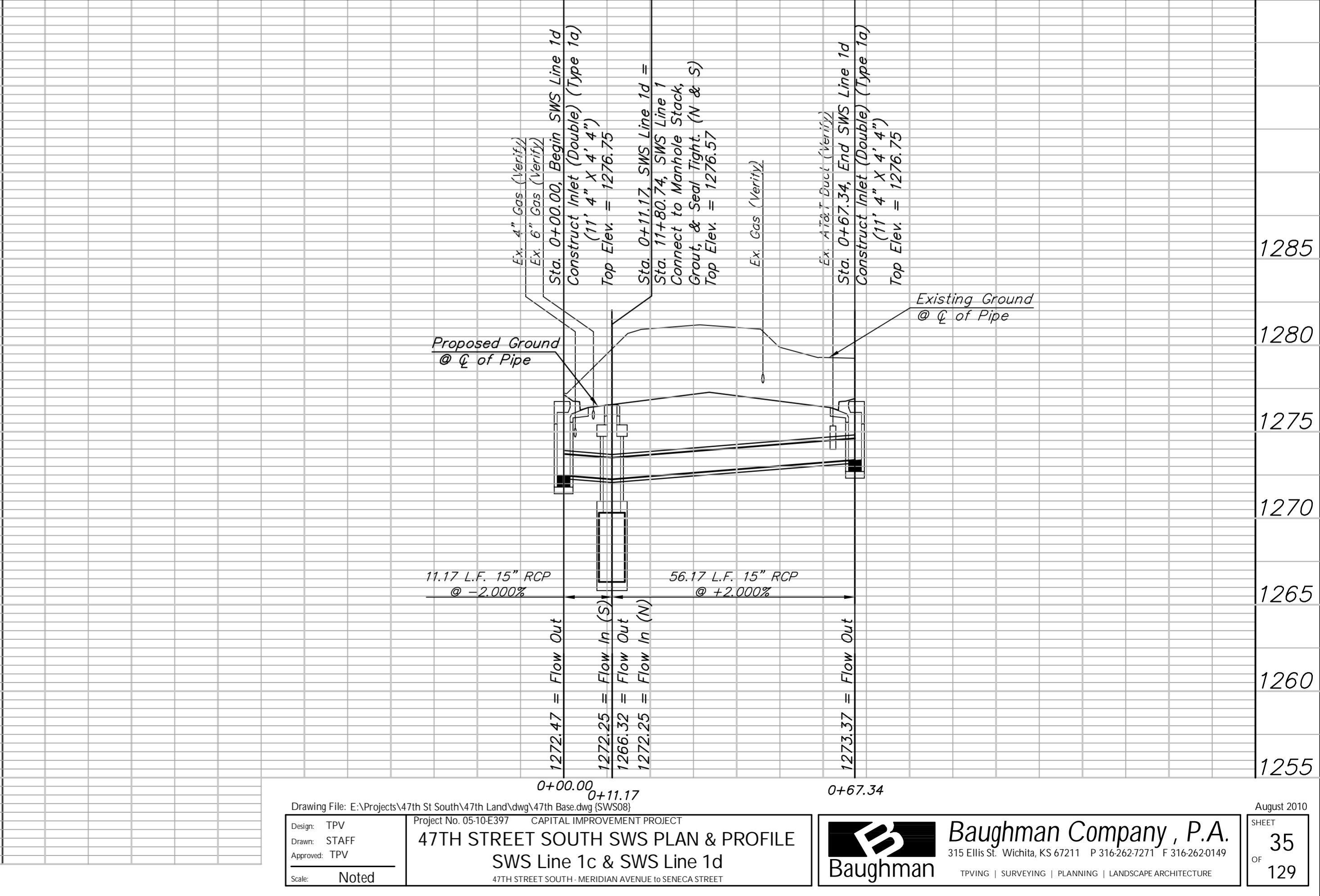
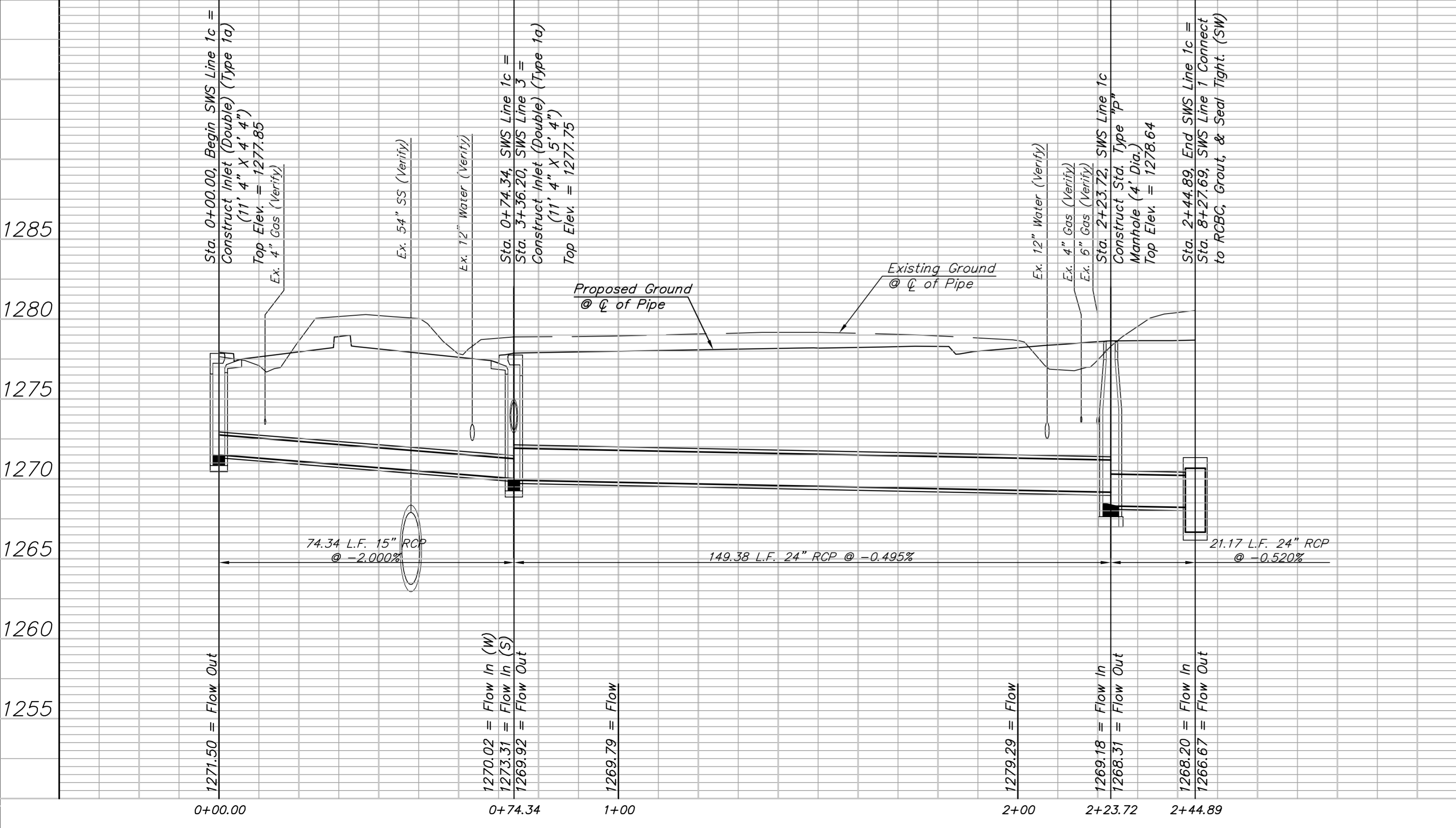
BENCHMARK:  
 BM #1 - City of Wichita Disc Located in the Northeast Corner  
 of the Intersection of Meridian and 47th Street South  
 Sta. 10+29, 43' Lt.  
 Elev. = 1279.18 (MSL)



BENCHMARK:  
 BM #1 - City of Wichita Disc Located in the Northeast Corner  
 of the Intersection of Meridian and 47th Street South  
 Sta. 10+29, 43' Lt.  
 Elev. = 1279.18 (MSL)



FHWA REGION NO.	STATE	PROJECT NO.	FISCAL YEAR	SHEET NO.	TOTAL SHEETS
7	KANSAS	87 N-0394-01	2010	35	129



Drawing File: E:\Projects\47th St South\47th Land\dwg\47th Base.dwg (SWS@)  
 Project No: 05-10-E397 CAPITAL IMPROVEMENT PROJECT  
**47TH STREET SOUTH SWS PLAN & PROFILE**  
 SWS Line 1c & SWS Line 1d  
 47TH STREET SOUTH, MERIDIAN AVENUE TO SENECA STREET

**Baughman Company, P.A.**  
 315 Ellis St. Wichita, KS 67211 P 316.262.1271 F 316.262.0149  
 TPVING | SURVEYING | PLANNING | LANDSCAPE ARCHITECTURE

August 2010  
 SHEET 35 OF 129