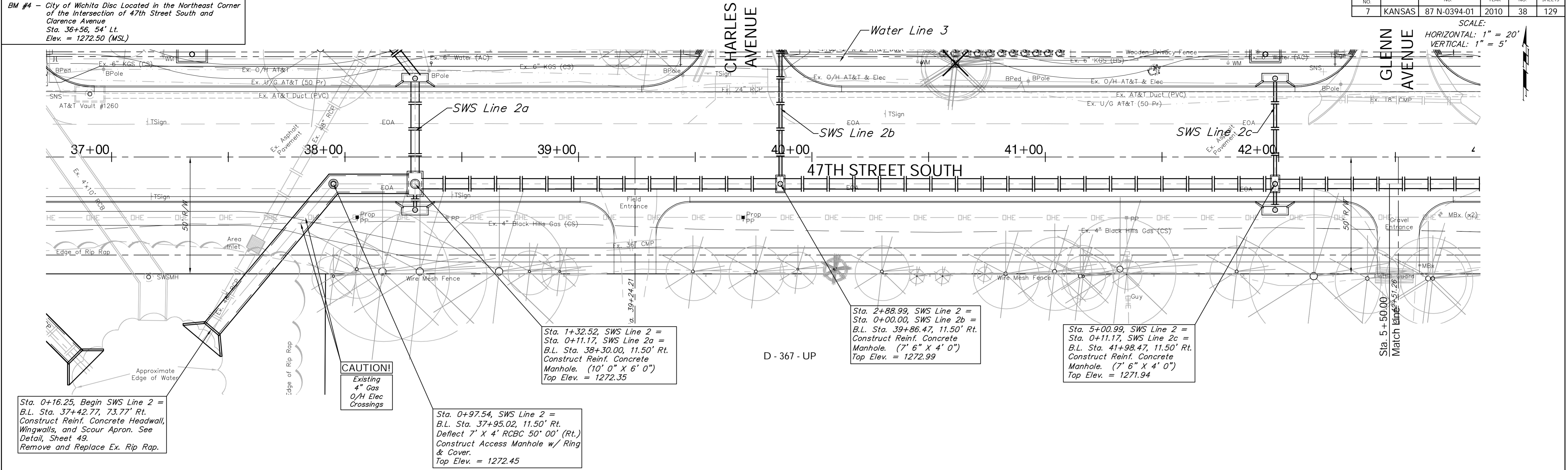


BENCHMARK:
 BM #4 - City of Wichita Disc Located in the Northeast Corner of the Intersection of 47th Street South and Clarence Avenue
 Sta. 36+56, 54' Lt.
 Elev. = 1272.50 (MSL)

FHWA REGION NO.	STATE	PROJECT NO.	FISCAL YEAR	SHEET NO.	TOTAL SHEETS
7	KANSAS	87 N-0394-01	2010	38	129

SCALE:
 HORIZONTAL: 1" = 20'
 VERTICAL: 1" = 5'



Sta. 0+16.25, Begin SWS Line 2 =
 B.L. Sta. 37+42.77, 73.77' Rt.
 Construct Reinf. Concrete Headwall,
 Wingwalls, and Scour Apron. See
 Detail, Sheet 49.
 Remove and Replace Ex. Rip Rap.

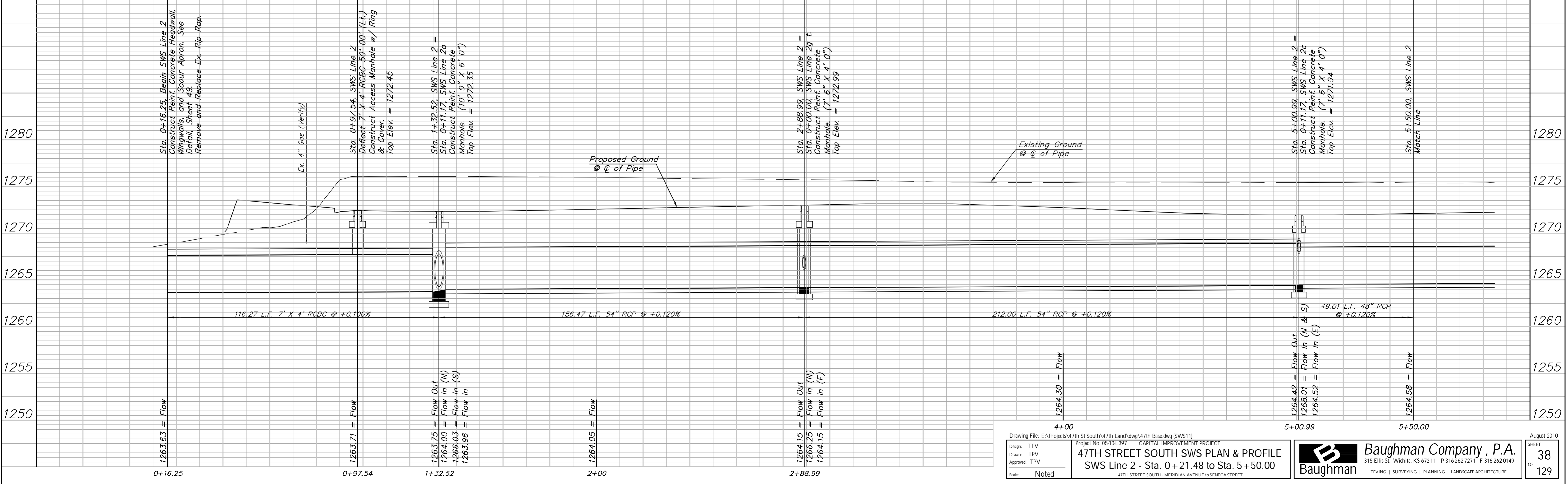
CAUTION!
 Existing
 4" Gas
 O/H Elec
 Crossings

Sta. 1+32.52, SWS Line 2 =
 Sta. 0+11.17, SWS Line 2a =
 B.L. Sta. 38+30.00, 11.50' Rt.
 Construct Reinf. Concrete
 Manhole. (10' 0" X 6' 0")
 Top Elev. = 1272.35

Sta. 2+88.99, SWS Line 2 =
 Sta. 0+00.00, SWS Line 2b =
 B.L. Sta. 39+86.47, 11.50' Rt.
 Construct Reinf. Concrete
 Manhole. (7' 6" X 4' 0")
 Top Elev. = 1272.99

Sta. 5+00.99, SWS Line 2 =
 Sta. 0+11.17, SWS Line 2c =
 B.L. Sta. 41+98.47, 11.50' Rt.
 Construct Reinf. Concrete
 Manhole. (7' 6" X 4' 0")
 Top Elev. = 1271.94

Sta. 0+97.54, SWS Line 2 =
 B.L. Sta. 37+95.02, 11.50' Rt.
 Defect 7' X 4' RCBC 50' 00' (Rt.)
 Construct Access Manhole w/ Ring
 & Cover.
 Top Elev. = 1272.45



Drawing File: E:\Projects\47th St South\47th Land\dwg\47th Base.dwg (SWS11)
 Design: TPV
 Drawn: TPV
 Approved: TPV
 Scale: Noted

47TH STREET SOUTH SWS PLAN & PROFILE
 SWS Line 2 - Sta. 0+21.48 to Sta. 5+50.00
 47TH STREET SOUTH - MERIDIAN AVENUE TO SENECA STREET

Baughman Company, P.A.
 315 Ellis St., Wichita, KS 67211 P 316.262.1271 F 316.262.0149
 TYPING | SURVEYING | PLANNING | LANDSCAPE ARCHITECTURE