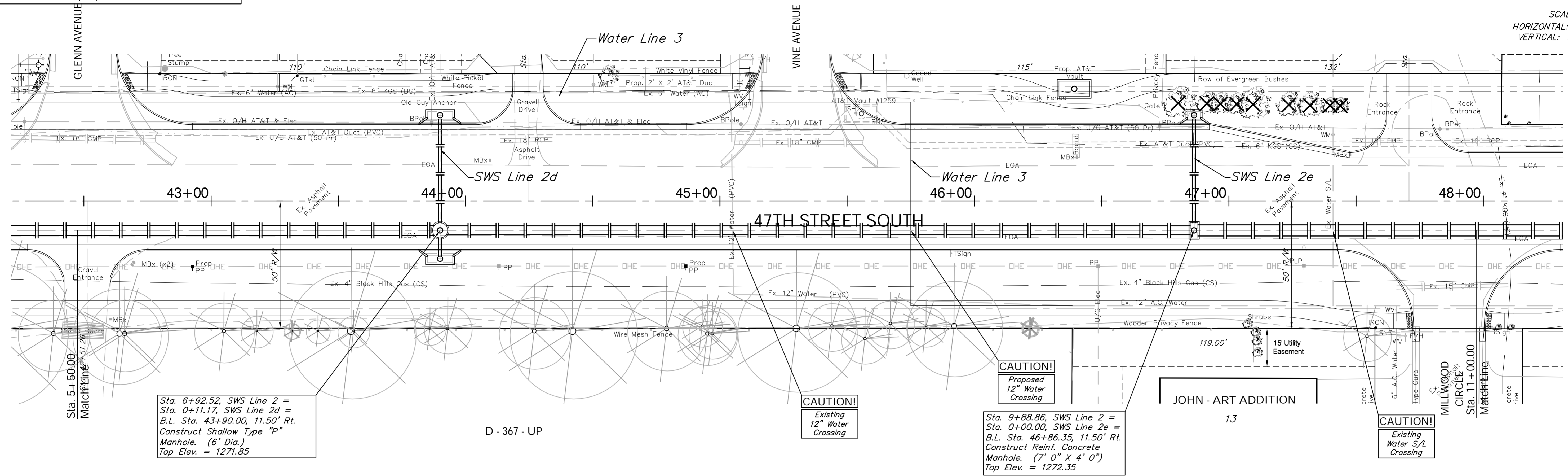


BENCHMARK:  
 BM #5 - Cut into Top of Curb in the Northwest Corner of the Intersection of 47th Street South and Vine Avenue  
 Sta. 45+17, 66' Lt.  
 Elev. = 1272.89 (MSL)

FHWA REGION NO.	STATE	PROJECT NO.	FISCAL YEAR	SHEET NO.	TOTAL SHEETS
7	KANSAS	87 N-0394-01	2010	39	129

SCALE:  
 HORIZONTAL: 1" = 20'  
 VERTICAL: 1" = 5'



Sta. 6+92.52, SWS Line 2 =  
 Sta. 0+11.17, SWS Line 2d =  
 B.L. Sta. 43+90.00, 11.50' Rt.  
 Construct Shallow Type "P"  
 Manhole. (6' Dia.)  
 Top Elev. = 1271.85

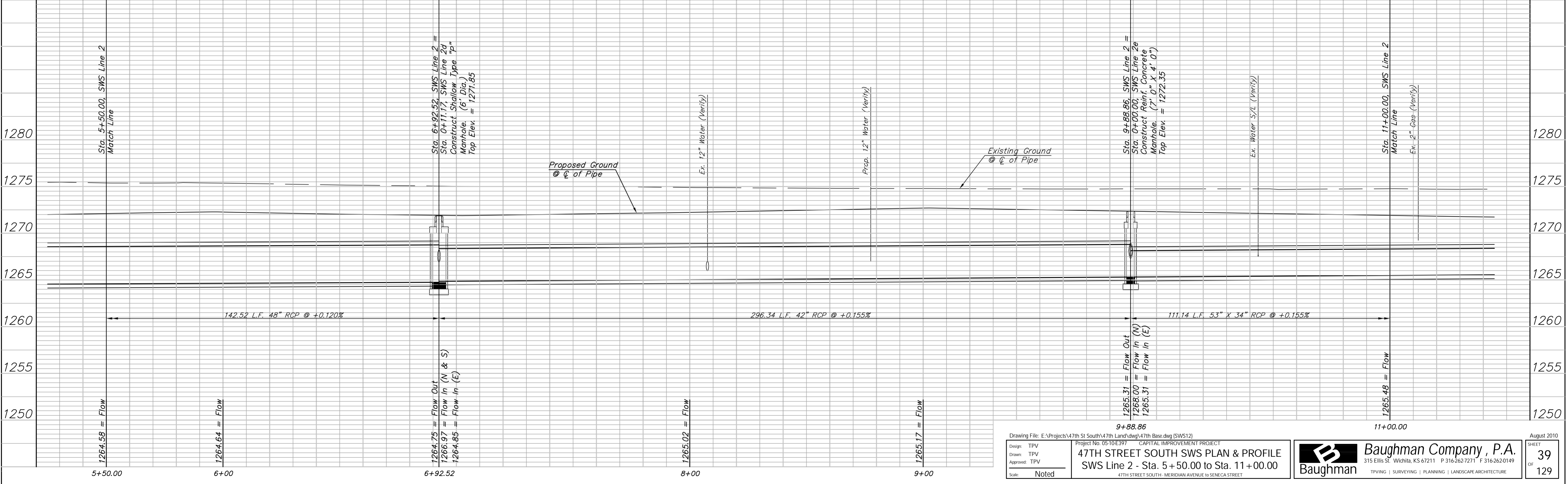
D - 367 - UP

CAUTION!  
 Existing 12" Water Crossing

CAUTION!  
 Proposed 12" Water Crossing

Sta. 9+88.86, SWS Line 2 =  
 Sta. 0+00.00, SWS Line 2e =  
 B.L. Sta. 46+86.35, 11.50' Rt.  
 Construct Reinf. Concrete  
 Manhole. (7' 0" X 4' 0")  
 Top Elev. = 1272.35

CAUTION!  
 Existing Water S/L Crossing



Drawing File: E:\Projects\47th St South\47th Land\dwg\47th Base.dwg (SWS12)  
 Project No: 05-10-E397 CAPITAL IMPROVEMENT PROJECT  
**47TH STREET SOUTH SWS PLAN & PROFILE**  
 SWS Line 2 - Sta. 5+50.00 to Sta. 11+00.00  
 47TH STREET SOUTH - MERIDIAN AVENUE TO SENECA STREET

**Baughman Company, P.A.**  
 315 Ellis St., Wichita, KS 67211 P 316.262.1271 F 316.262.0149  
 TPVING | SURVEYING | PLANNING | LANDSCAPE ARCHITECTURE

August 2010  
 SHEET 39 OF 129