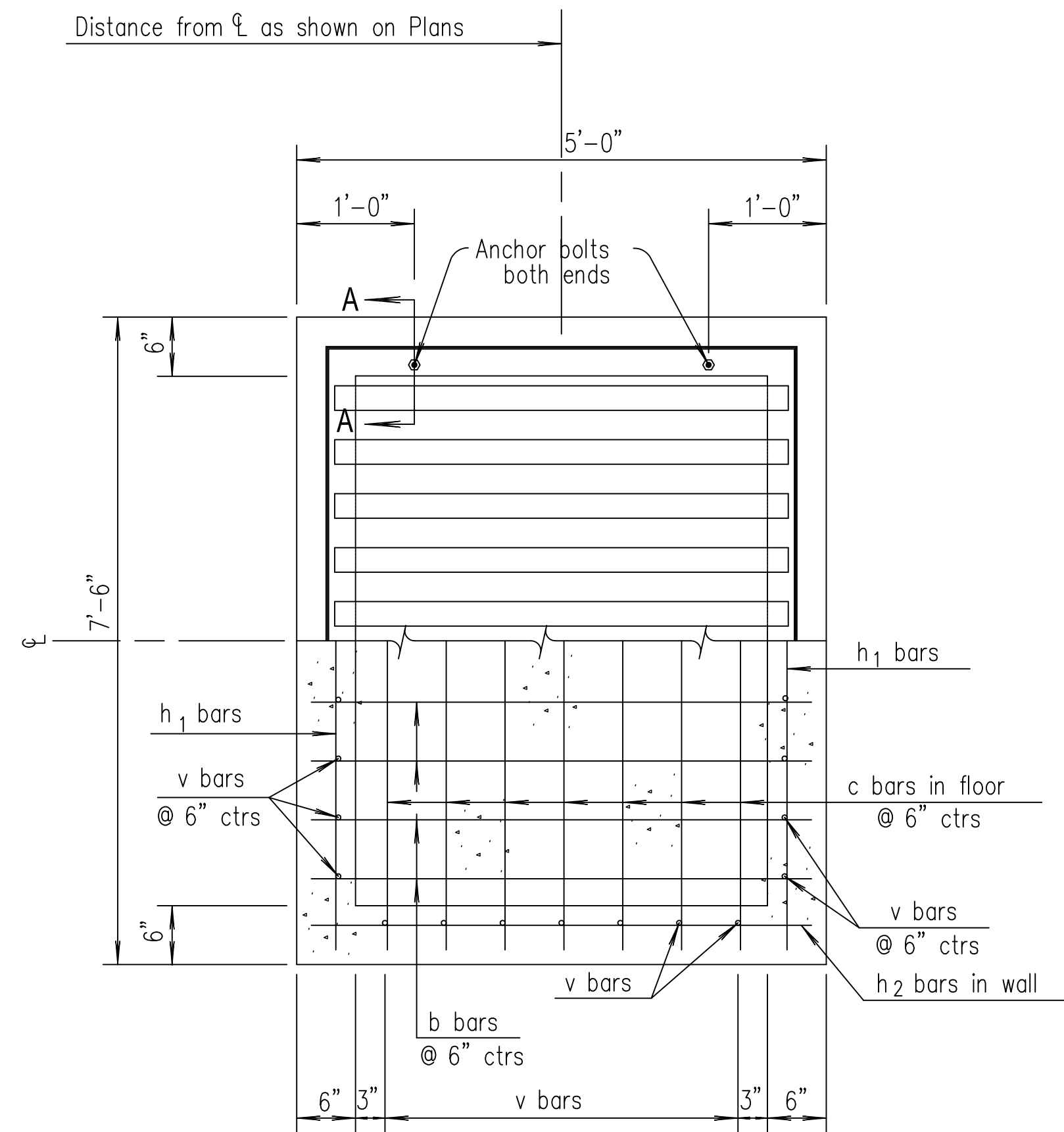
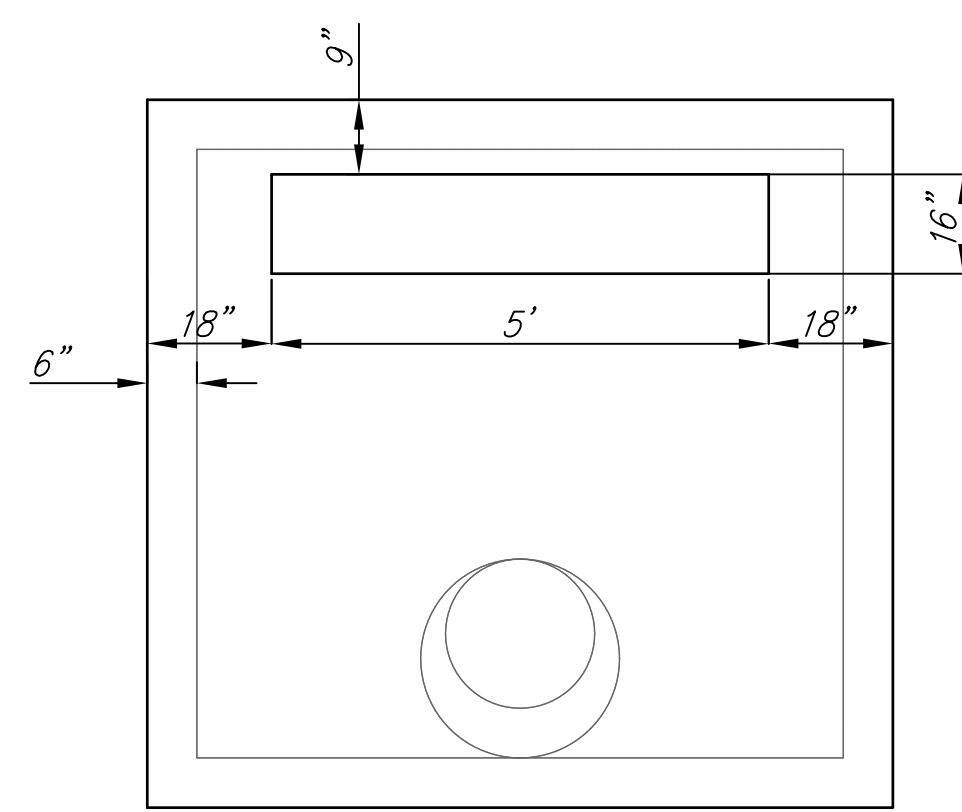


SECTION

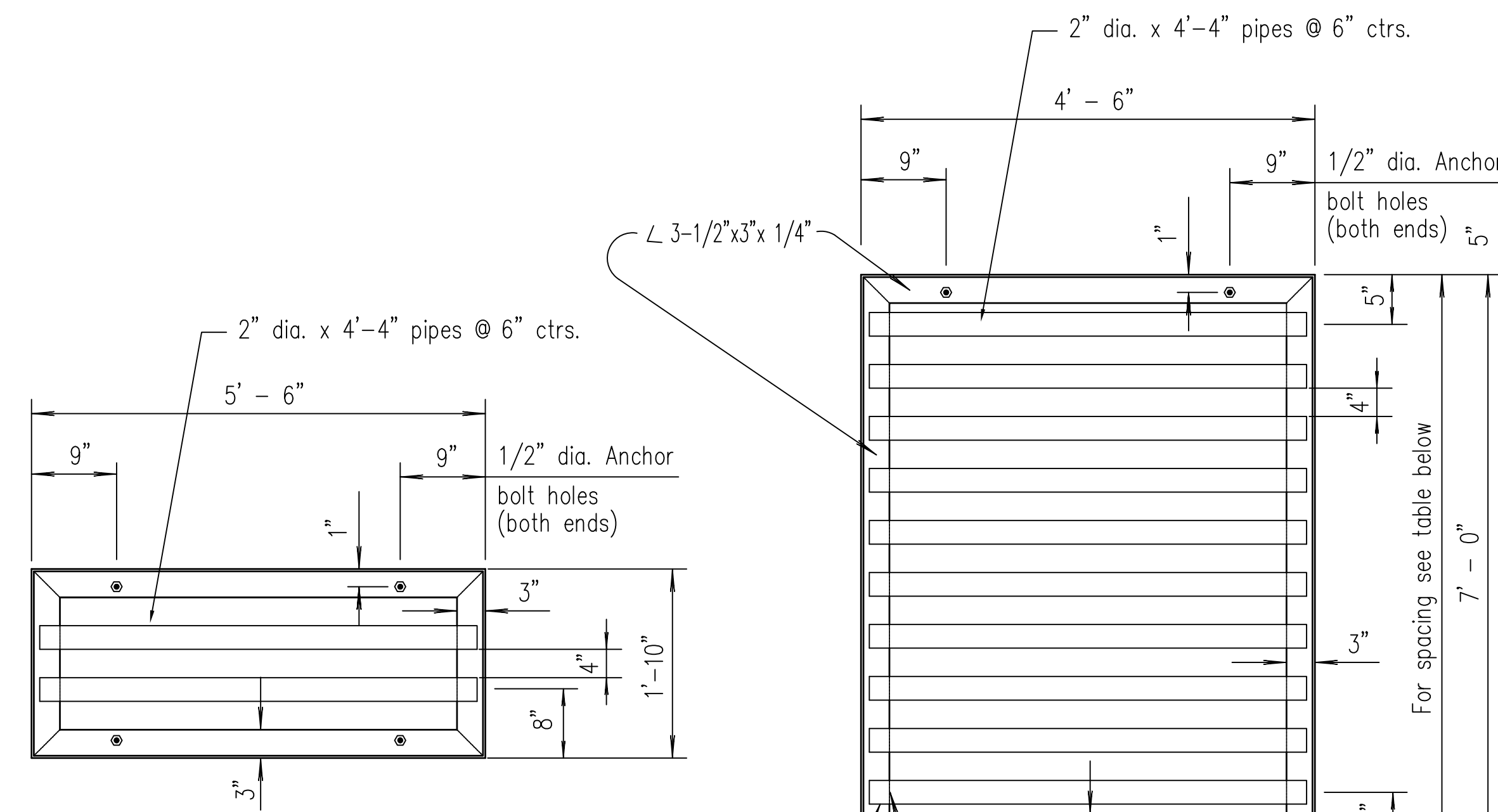


PLAN AND SECTION

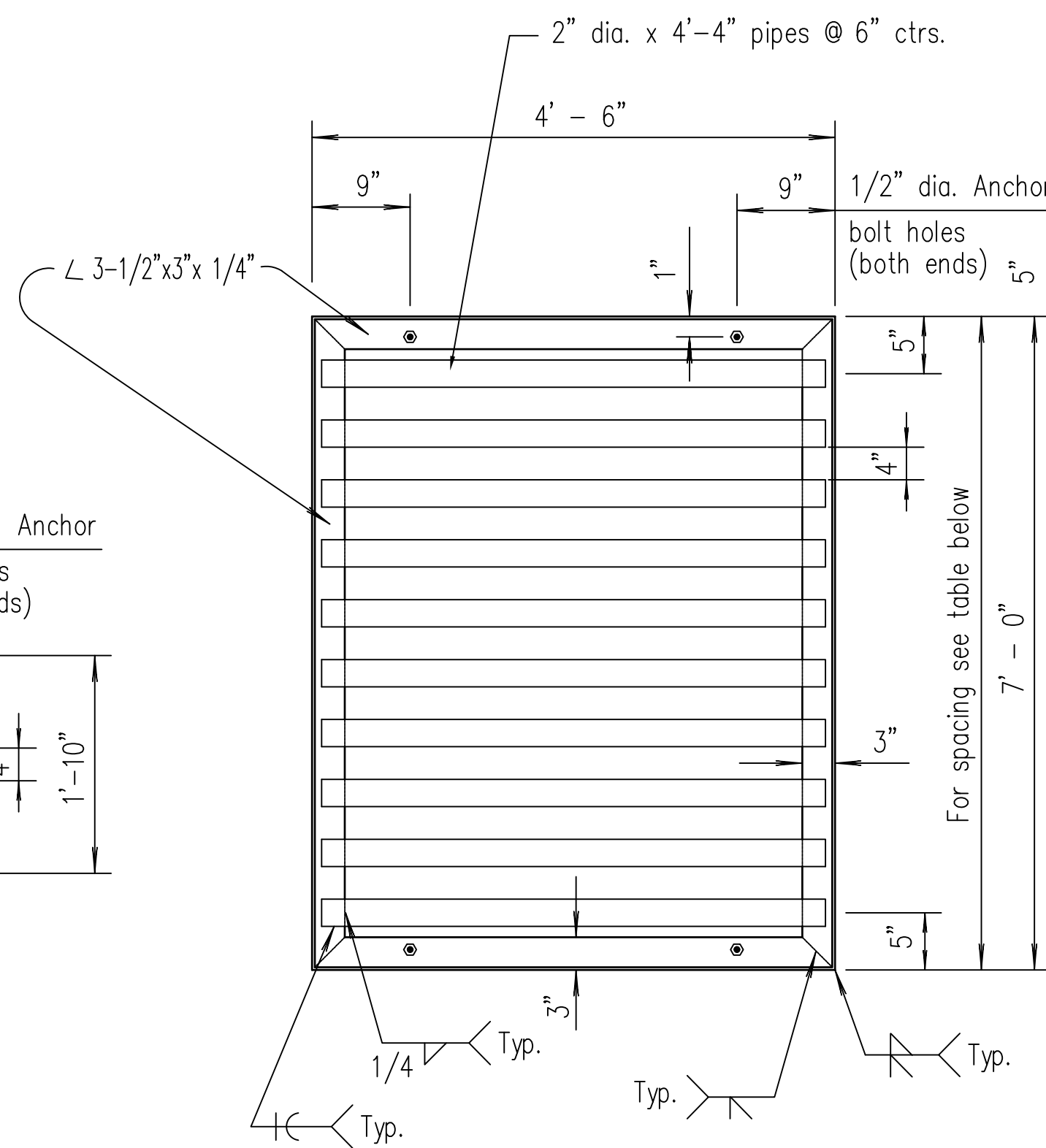


INLET OPENING DETAIL

NOTE: GRADE DIRT DOWN TO MATCH OPENING. CONSTRUCT A 5'X2' CONCRETE APRON TO MATCH OPENING (6" THICK).



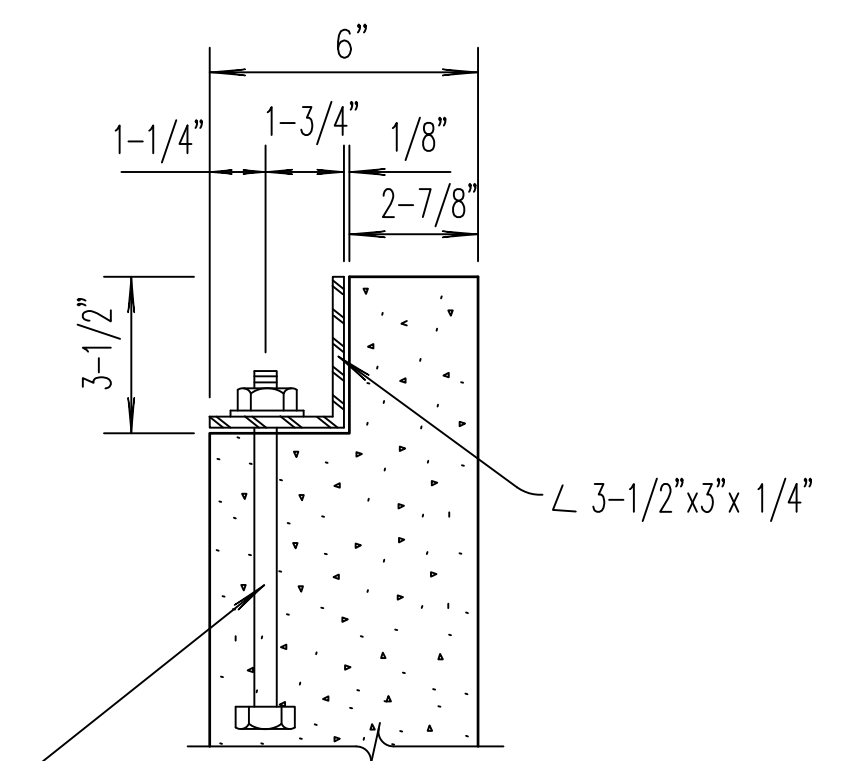
SIDEWALL GRATE UNIT DETAILS



TOP GRATE UNIT DETAILS

GENERAL NOTE

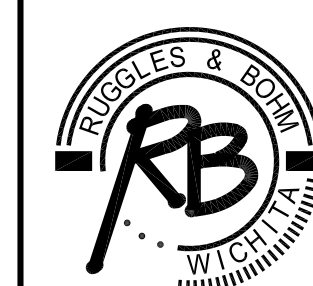
Use Class A Concrete throughout. All exposed edges shall be finished with an edging tool.
 At the contractors option, Class A Concrete (AE) or mix used in concrete pavement may be used throughout.
 In general, pipes will enter and leave the manhole at various positions. Where possible bend bars around pipes.
 Floor of inlet shall be shaped as shown in various "Examples" on Reinforced Concrete Manhole Standard Drawing RD633. Concrete used for shaping shall be unreinforced Class "A" Concrete or concrete pavement mix. No addition in concrete quantities shall be made for shaping floor of inlets.
 No deductions in concrete quantities shall be made for pipe openings.
 All bars are #4 @ 6" spacing and shall have a minimum clearance of 1-1/2" unless otherwise noted on the plans.
 The top of the manhole shall be sloped slightly to approximately fit the ground line or other conditions as directed by the Engineer.
 Steps shall be installed on all storm sewer inlets when specified in the plans or when "H" is equal to or greater than six feet. Steps shall comply with the KDOT Standard Specification.
 The grate shall be fabricated from standard or commercial grade structural steel and black steel pipe. The unit shall be hot dipped, galvanized after fabrication, in accordance with ASTM A123 except the weight of coating shall average not less than 2.0 ounces per square foot of actual surface and no individual test shall show less than 1.8 ounces of coating per square foot of actual surface area.



SECTION A-A

Note: Anchor bolts are subsidiary to the bid item "Inlet-Manhole, Special".

SWALLOW STREET DRAINAGE IMPROVEMENTS
 INLET MANHOLE SPECIAL
 WICHITA, KANSAS



Ruggles & Bohm, P.A.
 Engineering, Surveying, Land Planning
 924 North Main
 Wichita, Kansas 67203
 www.rbkansas.com
 (316) 264-8008
 (316) 264-4621 fax
 E-mail: info@rbkansas.com

DRAWING FILE: ENGINEERING BASE [Inlet Manhole Special]
 PROJECT NUMBER: 468-84690
 DATE: July 29, 2010

DESIGN	KWL	SHEET
DRAWN	RA	
REVIEW		
UTILITY		
OF		7
DATE		July 29, 2010
PROJECT NUMBER		468-84690
DRAWING FILE		ENGINEERING BASE [Inlet Manhole Special]

35430