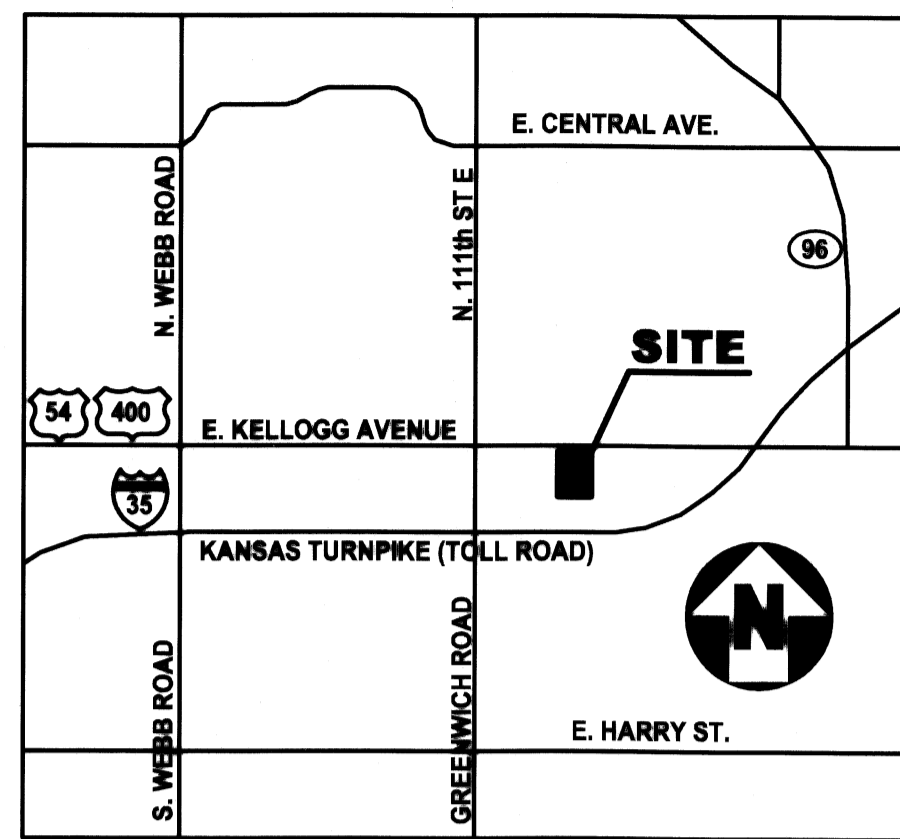
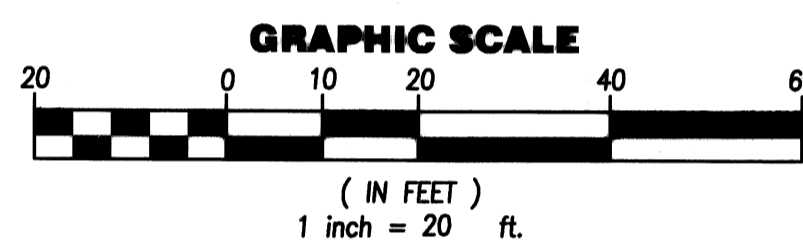
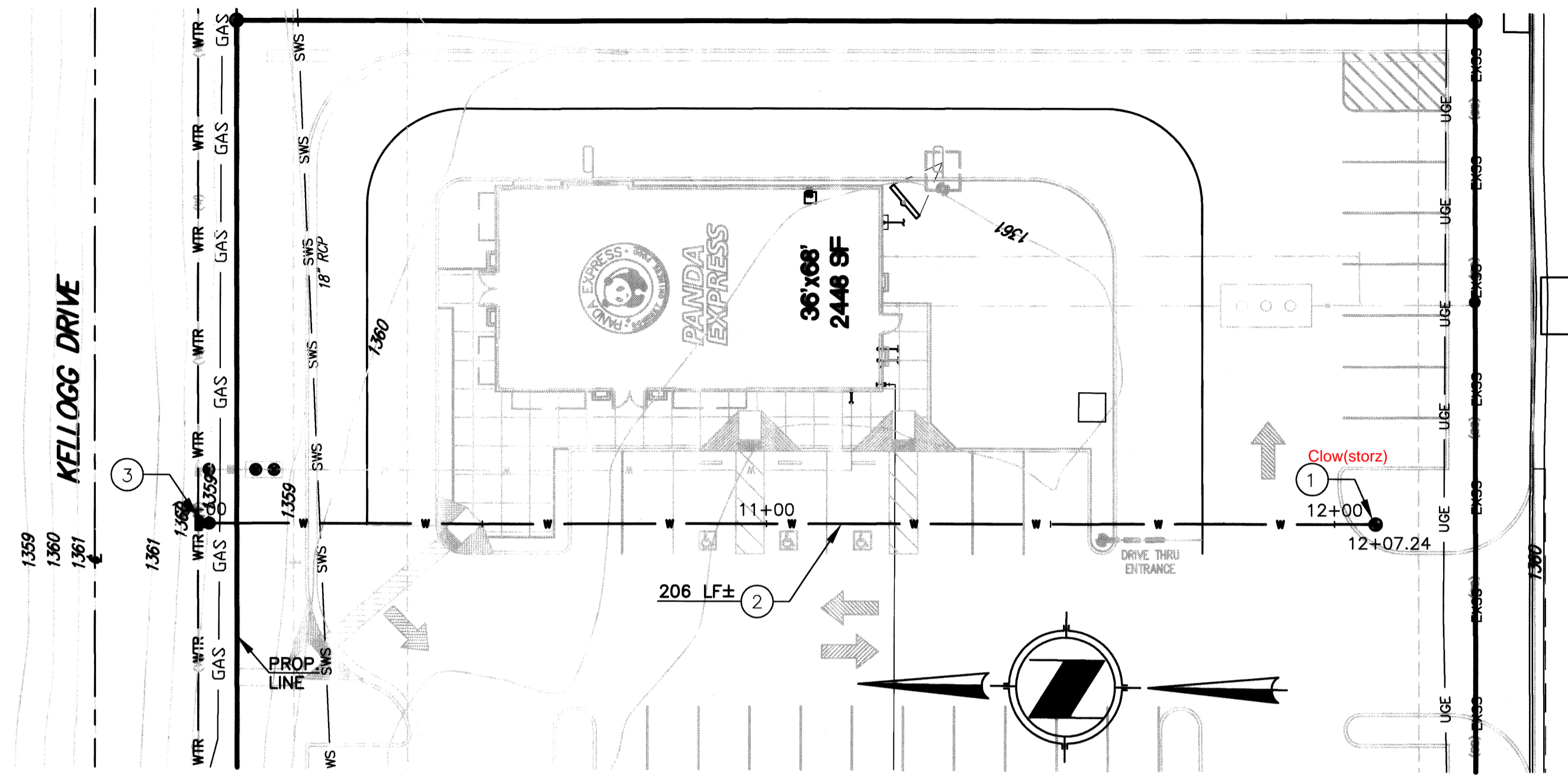


FIRE LINE TO SERVE PANDA EXPRESS FIRE HYDRANT

LOT 8, BLOCK A, ONE KELLOGG PLACE, 2ND ADDITION
 11737 EAST KELLOGG
 WICHITA, KS 67207
 PRIVATE PROJECT NUMBER: 1548 PPW (607853)



VICINITY MAP



FIRE LINE KEYNOTES

1. PROVIDE AND INSTALL NEW FIRE HYDRANT PER CITY OF WICHITA STANDARD SPECIFICATIONS.
2. PROVIDE AND INSTALL 8" DI CL FIRE LINE FROM NEW TAP TO NEW FIRE HYDRANT PER CITY OF WICHITA STANDARD SPECIFICATIONS. LENGTH PER PLAN.
3. COORDINATE WITH CITY OF WICHITA FOR TAP TO MAIN.

NOTES:

1. ALL CONSTRUCTION SHALL CONFORM TO THE CITY OF WICHITA STANDARD SPECIFICATIONS.
2. CONTRACTOR IS TO VERIFY THE LOCATION OF ALL UTILITIES AND PIPE INVERTS AND DEPTHS SHOWN ON THE PLANS PRIOR TO BEGINNING ANY CONSTRUCTION. IF TIE IN POINTS AND ELEVATIONS DIFFER SIGNIFICANTLY FROM THOSE SHOWN AND SLOPE OF PIPE CANNOT MEET CODE MINIMUMS OR THERE IS ANY QUESTION OF THE ABILITY OF THE SYSTEM TO WORK PROPERLY, CONTRACTOR IS TO CONTACT ENGINEER PRIOR TO BEGINNING WORK.

APPROVALS:

APPROVED AS NOTED
 BY CITY ENGINEER OF WICHITA,
 BY WICHITA WATER UTILITIES,
 & BY WICHITA FIRE DEPARTMENT

Water Mains (Public Works) *[Signature]* 10/11/10

Water Mains (Water Utilities) *[Signature]* 10/05/2010

Fire Prot. Line _____

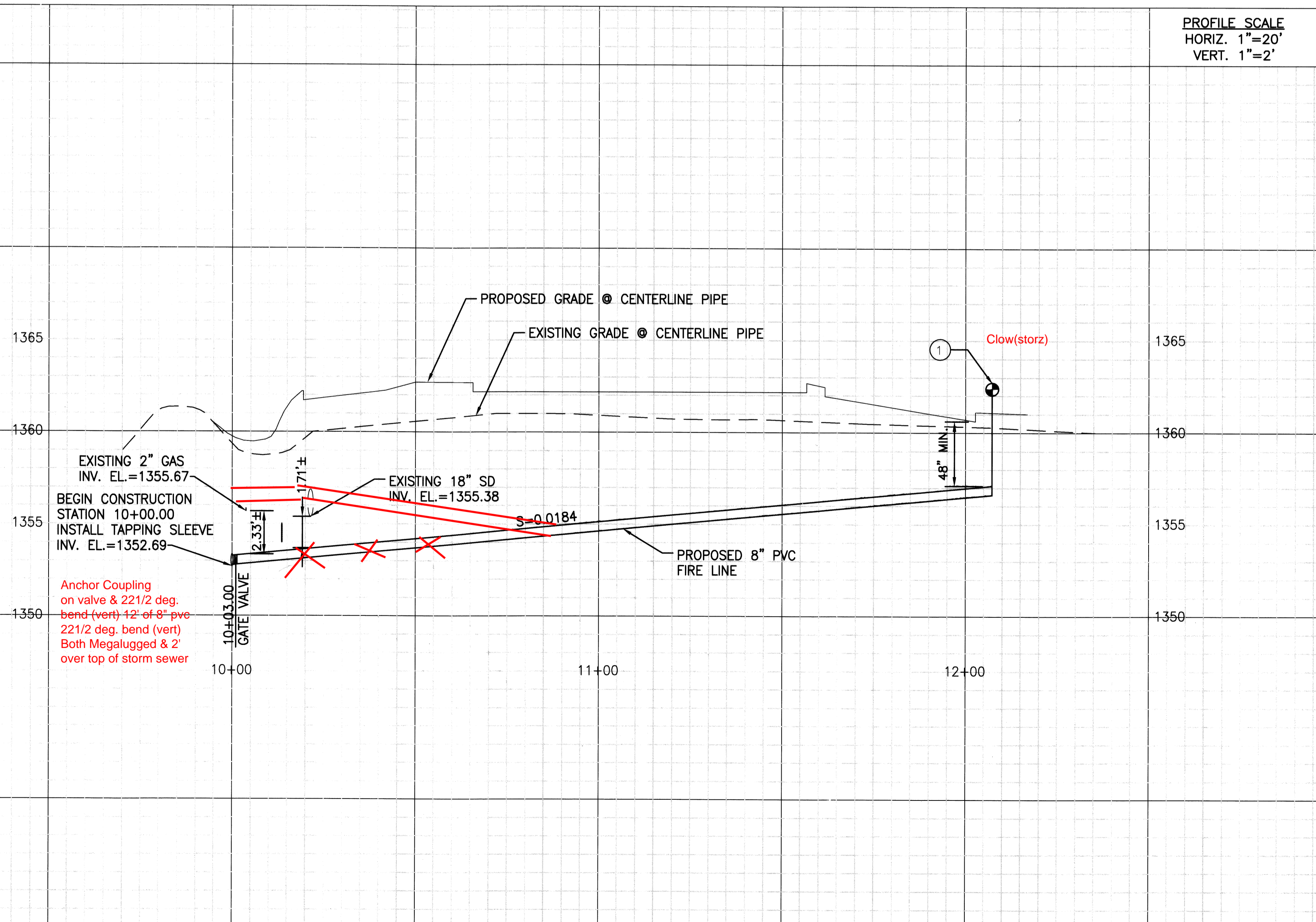
NOTE TO CONTRACTORS

PUBLIC PROPERTY:
 Inspection and testing for the waterline is to be provided by a Licensed Consulting Engineering Firm under contract with the Owner/Developer. Said inspection to be in accordance with the City of Wichita standard construction engineering practices and certified by a Licensed Professional Engineer licensed in the State of Kansas. No work shall be performed in dedicated easements or public right-of-way by the Contractor without such inspection nor shall any work be commenced without written authorization by the City Engineer. All Construction and Materials shall comply with the City of Wichita Specifications and Standards (on file and available in the City Engineer's Office).

PRIVATE PROPERTY:
 Installation and testing for the fire protection line is to be performed by a City of Wichita licensed fire protection contractor in accordance with the fire codes as adopted by the City of Wichita. All materials and construction practices for the fire protection line shall comply with the fire codes as adopted by the City of Wichita (available from the City of Wichita Fire Department). The Contractor shall not commence work without notification and approval of the Wichita Fire Department.
 Inspection of the fire protection line is to be provided by the City of Wichita Fire Department and by a licensed Consulting Engineering Firm under contract with the Owner/Developer.
 The contractor shall not start work until the project inspector is assigned to the project and present on the site. Any work done without inspection will be required to be uncovered for inspection.

As Built Plans:

CONTRACTOR: Boardman
 INSPECTOR: Larry Gann, K E Miller Engineering
 PDF by: L.G.GANN, 10-21-2010



PANDA RESTAURANT GROUP INC.
 1683 Walnut Grove Ave.
 Rosemead, California
 91770
 Telephone: 626.799.9898
 Facsimile: 626.372.8288

All ideas, designs, arrangement and plans indicated or represented by this drawing are the property of Panda Express Inc. and were created for use on this specific project. None of these ideas, designs, arrangements or plans may be used by or disclosed to any person, firm, or corporation without the written permission of Panda Express Inc.

REVISIONS:

NO.	DESCRIPTION	DATE

ISSUE DATE:

1ST CITY PLAN REVIEW	07-14-10
2ND CITY APPROVAL	08-13-10

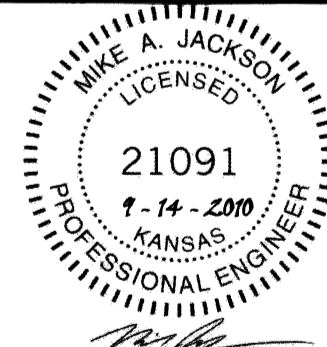
DRAWN BY: CP & AR

PANDA PROJECT #: S8-D2436
 ARCH PROJECT #: PND1003



TTC T M A D
 TAYLOR & GAINES
 PROJECT NO. 6610-107-00

STAMP:



PANDA EXPRESS

PARCEL 8
 11777 EAST KELLOGG
 WICHITA, KS 67207



Know what's below.
 Call before you dig.

C-5.0
 FIRE LINE
 PRIVATE PROJECT
 PLAN