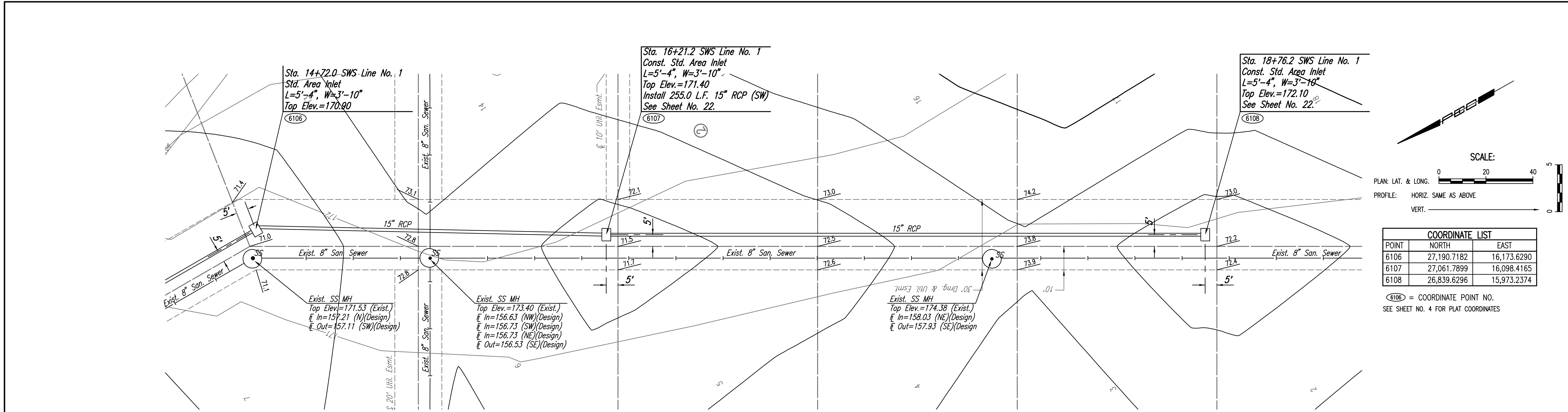


PLAN	CHECKED	BY	DATE
	CHECKED		

PROFILE	CHECKED	BY	DATE
	CHECKED		

Saved: 09-30-2010 1:20:42 PM by BIS  
 Plot Scale: 1:20 11-12-2010 2:38:13 PM by BILL J. SECKSON  
 G:\2009\08389\000\08389-00-C-SWSLINE 1-2



Sta. 14+72.0 SWS Line No. 1  
 Const. Std. Area Inlet  
 L=5'-4", W=3'-10"  
 Top Elev.=170.90  
 (6106)

Sta. 16+21.2 SWS Line No. 1  
 Const. Std. Area Inlet  
 L=5'-4", W=3'-10"  
 Top Elev.=171.40  
 Install 255.0 L.F. 15" RCP (SW)  
 See Sheet No. 22.  
 (6107)

Sta. 18+76.2 SWS Line No. 1  
 Const. Std. Area Inlet  
 L=5'-4", W=3'-10"  
 Top Elev.=172.10  
 See Sheet No. 22.  
 (6108)

Exist. SS MH  
 Top Elev.=171.53 (Exist.)  
 In=157.21 (N)(Design)  
 Out=157.11 (SW)(Design)

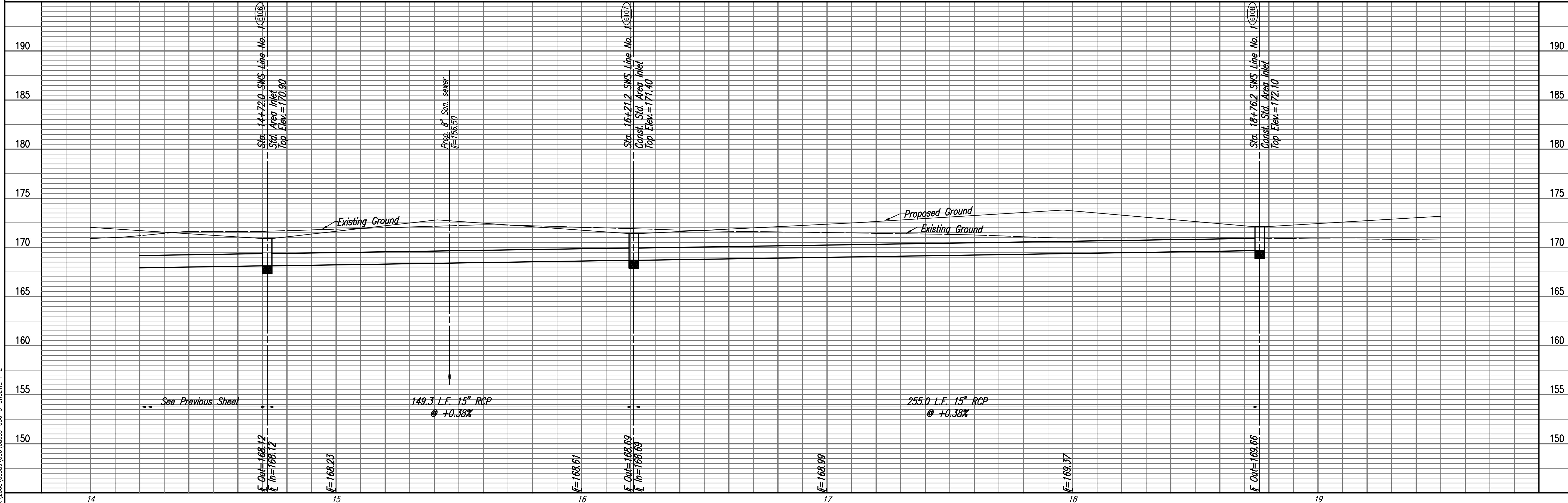
Exist. SS MH  
 Top Elev.=173.40 (Exist.)  
 In=156.63 (NW)(Design)  
 In=156.73 (SW)(Design)  
 In=156.73 (NE)(Design)  
 Out=156.53 (SE)(Design)

Exist. SS MH  
 Top Elev.=174.38 (Exist.)  
 In=158.03 (NE)(Design)  
 Out=157.93 (SE)(Design)

SCALE:  
 PLAN: LAT. & LONG. 0 20 40 5  
 PROFILE: HORIZ. SAME AS ABOVE  
 VERT. 0 5

COORDINATE LIST		
POINT	NORTH	EAST
6106	27,190.7182	16,173.6290
6107	27,061.7899	16,098.4165
6108	26,839.6296	15,973.2374

(6106) = COORDINATE POINT NO.  
 SEE SHEET NO. 4 FOR PLAT COORDINATES



Fontana 4th Addition-Phase 1  
**SWS LINE NO. 1**  
 JAMES L. ARMOUR, P.E. - CITY ENGINEER  
 CITY OF WICHITA PROJ. NO. 472-84800

Professional Engineering Consultants, P.A.  
 303 S. TOPEKA AVE., SUITE 100, WICHITA, KANSAS 67202  
 316-262-2291 • FAX 316-262-3003

Designed By: BMM  
 Drawn By: BUS  
 Job No.: 35-08389-000  
 Date: July 2008

Sheet 19 of 50