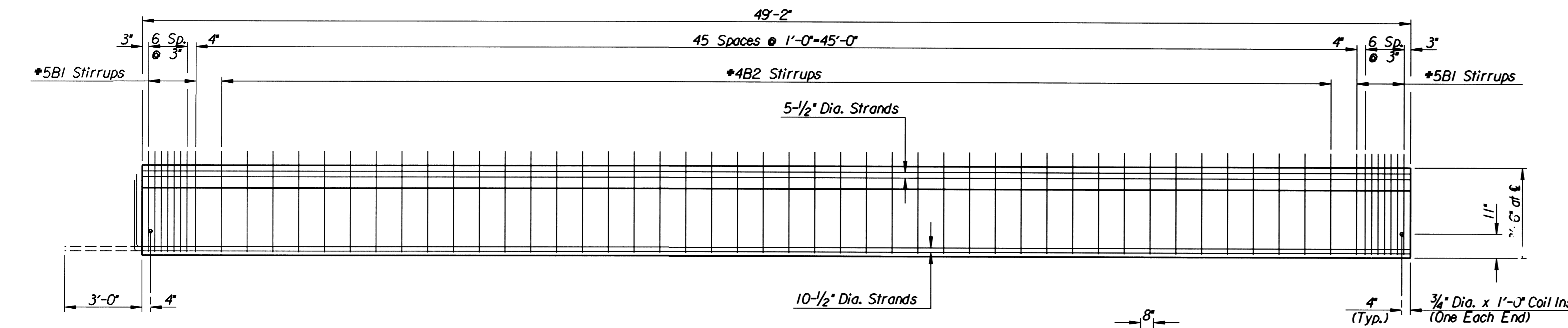


PLAN



ELEVATION OF SINGLE "T" PRESTRESSED CONCRETE BEAM
49'-2" Beam - 17.4 Tons per Beam (BB thru FF)
16.3 Tons per Beam (AA or GG)

REINFORCING STEEL ** (ONE BEAM)			
Mark	No.	Size	Length
B1	16	#5	9'-4"
B2	44	#4	9'-4"
B4	X	#4	3'-5"
Strands	15	1/2" Dia.	
Fabric	6"x6"	5'-10" Beam - 270 Sq. Ft.	
		4'-6" Beam - 207 Sq. Ft.	

** 7 for Beams AA and GG
14 for Beams BB, CC, DD, EE and FF.

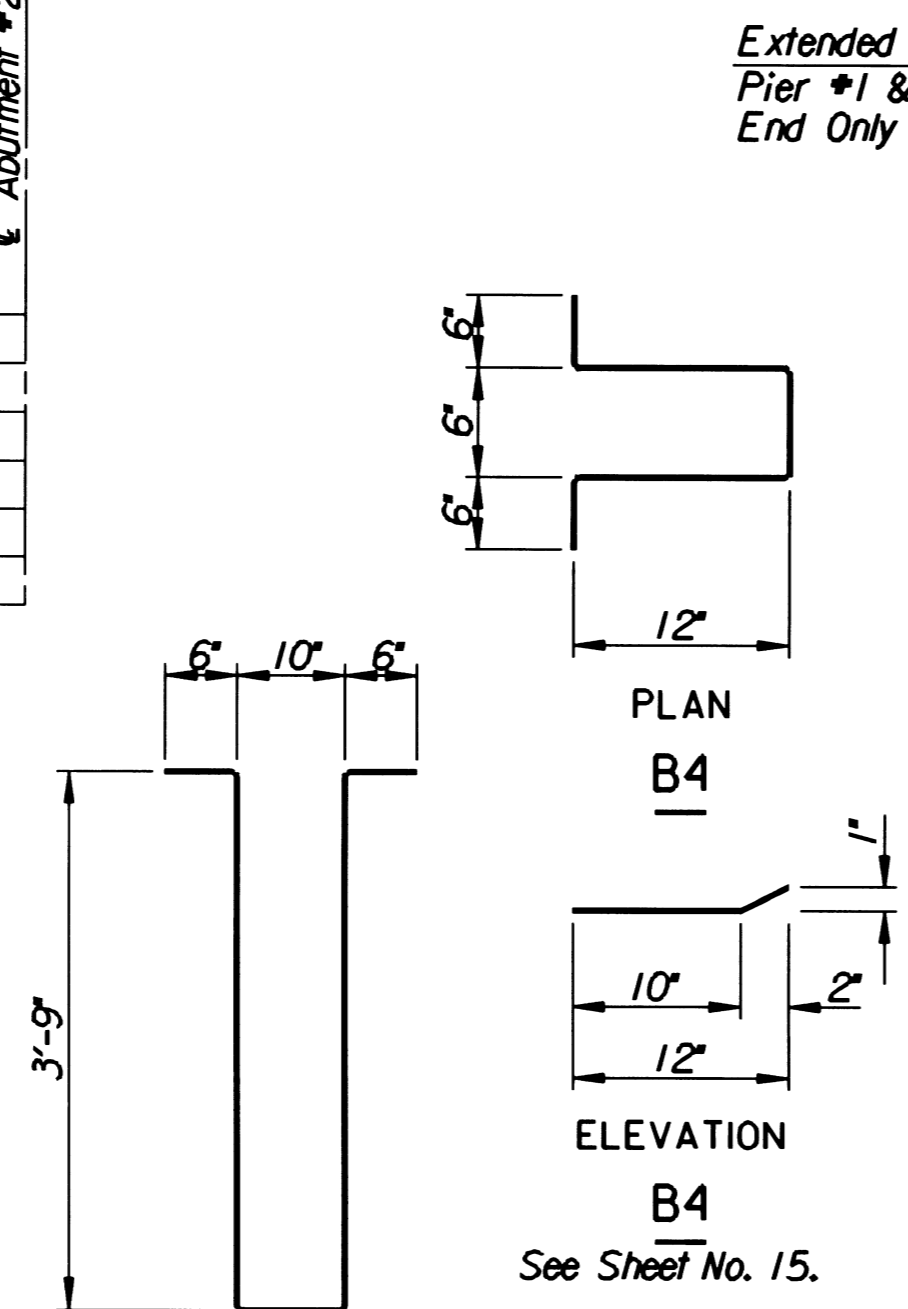
** See Bending Diagrams



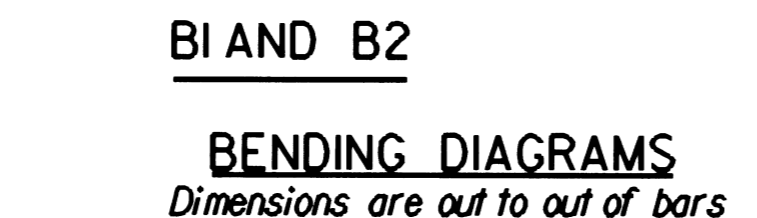
BEAM LOCATION PLAN

SUMMARY OF QUANTITIES (FOR 49'-2" BEAM) (For Information Only)			
Item	Unit	10-(5'-10" Beams)	4-(4'-6" Beams)
Concrete in Beams (f'c=5000 p.s.i.)	Cu. Yds.	88.3	35.5
Prestressing Steel A416 1/2" Dia. (Low Relaxation)	Lin. Ft.	7,433	2,973
Reinforcing Steel (Grade 60)	Lbs.	4,628	1,786
Elastomeric Bearing Pads (D60) (3/4"x8"x10/16")	Each	10	4
3/4" Open Coil Insert 6.0M	Each	20	8
Welded Wire Fabric	Sq. Ft.	2,700	828
3/4" Threaded Coil Rod x 9"	Each	40	16

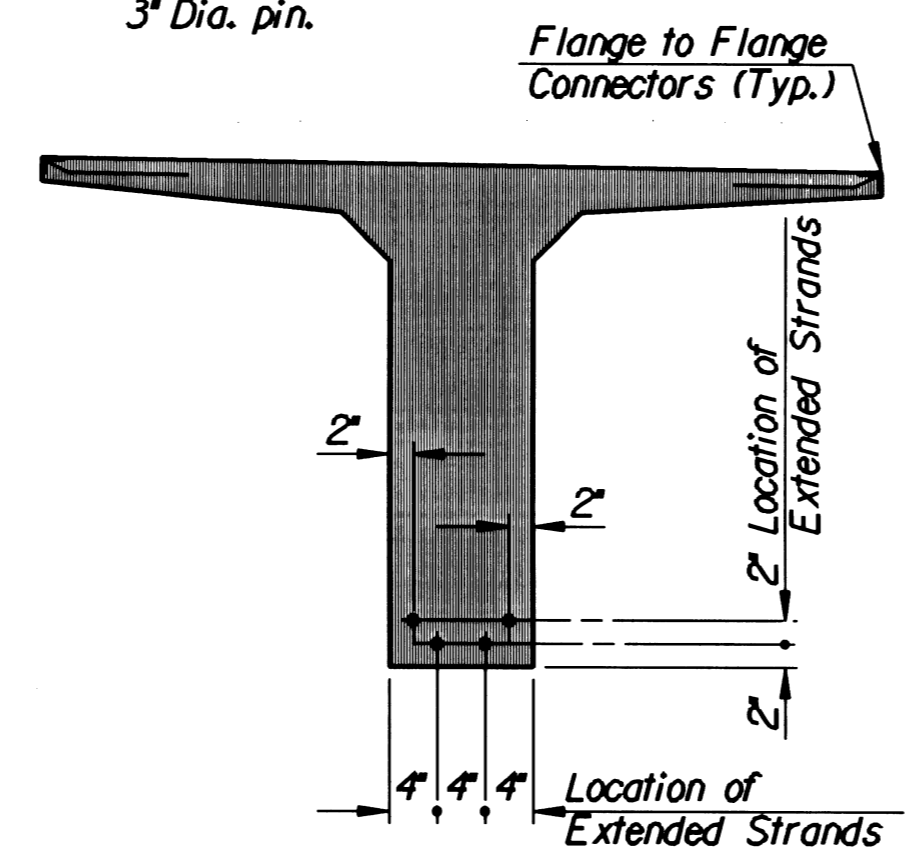
Subsidiary to Prestressed Concrete Beams
6.0M Designates 6000 Lbs. Safe Load in Tension.



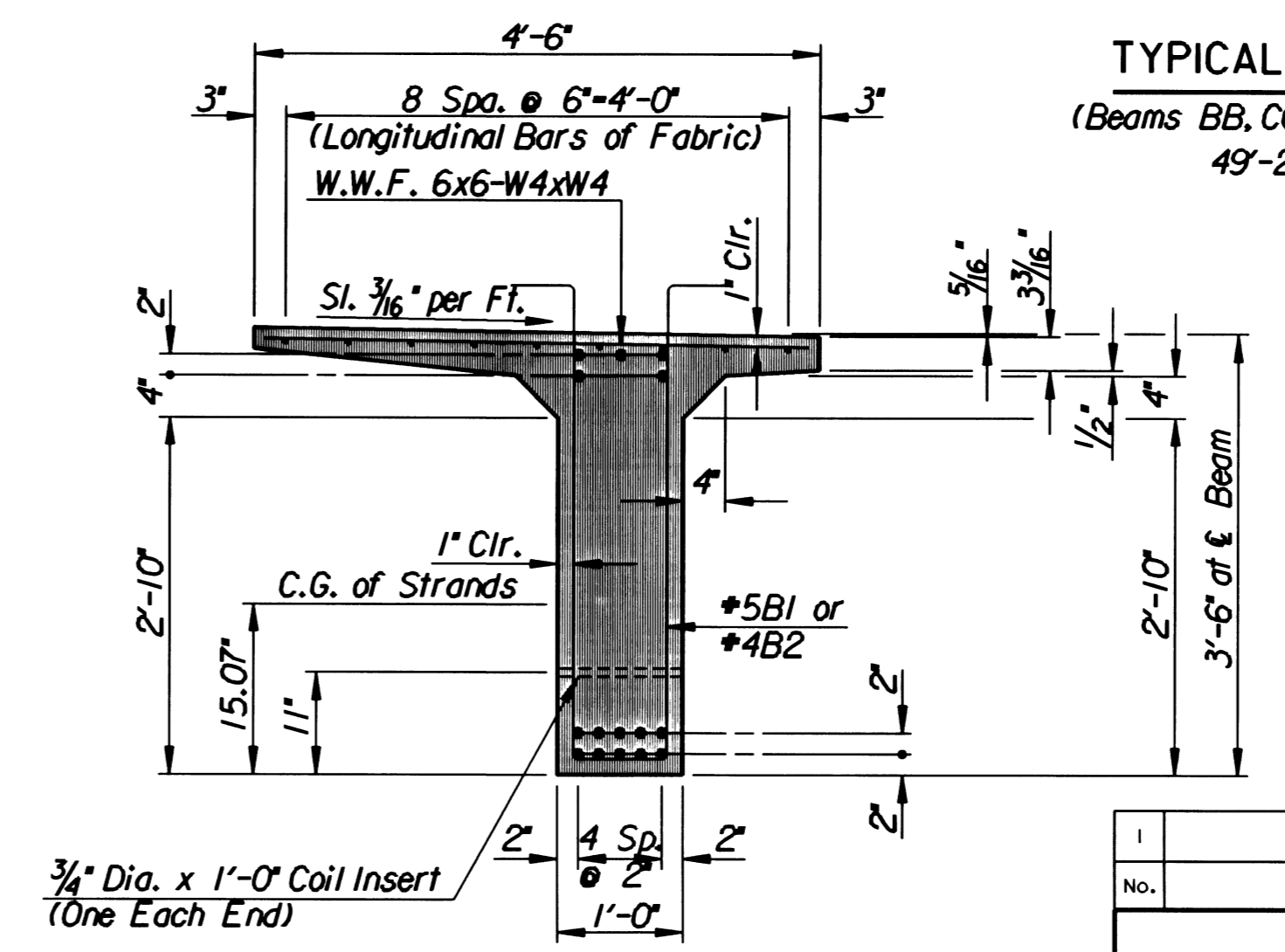
PART ELEVATION OF BEAM
(Showing Extended Strands)
Strands shall be bent on a 3" Dia. pin.



B1 AND B2
BENDING DIAGRAMS
Dimensions are out to out of bars

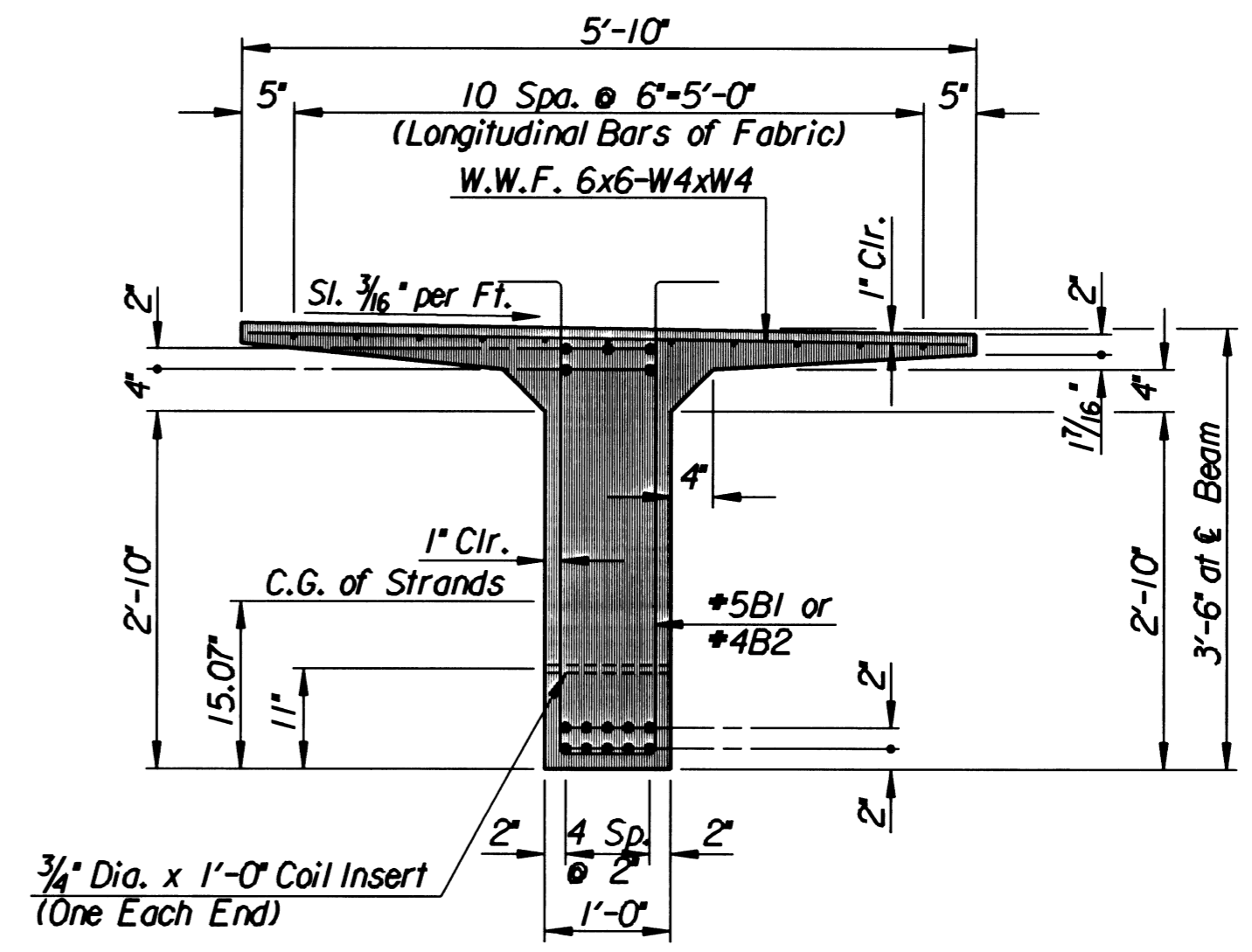


TYPICAL SECTION
(Beams AA and GG)
49'-2" Beam



TYPICAL SECTION
(Beams BB, CC, EE and FF)
49'-2" Beam

TYPICAL SECTION
(Beam DD)
49'-2" Beam



No.	Revisions	By	Date

CITY OF WICHITA, KANSAS
MICHAEL E. LINDEBAK, P.E.-CITY ENGINEER
MURDOCK BRIDGE
OVER LITTLE ARKANSAS RIVER
49'-2" SINGLE T BEAM DETAILS
CITY OF WICHITA PROJECT NO. 472-82785
PROFESSIONAL ENGINEERING CONSULTANTS, P.A.
ENGINEERS
WICHITA, KANSAS

Designed by	R.W.A.	Checked by	R.A.S.
Drawn by	W.L.L.	Date	Oct. 1998
		Job No.	96940