

PAVEMENT AND DRAINAGE IMPROVEMENTS

706997/751422

633806

620532

WASHINGTON ST. - LEWIS ST. TO ENGLISH ST.

OCA NO. 706997 / 751422

CITY OF WICHITA PROJECT NO. 472-84657

SOUTHEAST 48" WATERLINE - PHASE 1C WASHINGTON/WATERMAN TO LEWIS/IDA

OCA NO. 633806

CITY OF WICHITA PROJECT NO. 448-90417

AND

SANITARY SEWER MODIFICATIONS AT WATERMAN/WASHINGTON

OCA NO. 620532

CITY OF WICHITA PROJECT NO. 468-84565

GENERAL NOTES

ALL ELEVATIONS SHOWN ARE NGVD29 DATUM.

THE CONTRACTOR SHALL NOT START WORK ON THE PROJECT UNTIL THE PROJECT INSPECTOR IS ASSIGNED TO THE PROJECT AND IS PRESENT ON THE SITE. ANY WORK DONE WITHOUT INSPECTION WILL BE REQUIRED TO BE UNCOVERED FOR INSPECTION.

ALL CONSTRUCTION WORK AND MATERIAL IN THIS PROJECT SHALL COMPLY WITH CITY OF WICHITA STANDARD SPECIFICATIONS FOR THE CONSTRUCTION OF CITY PROJECTS UNLESS OTHERWISE NOTED IN THE PLANS OR SPECIAL PROVISIONS.

UNDERGROUND UTILITY SERVICE LINES AND OVERHEAD UTILITY POLE LINES ARE TO BE ADJUSTED AS NECESSARY BY OTHERS DURING CONSTRUCTION UNLESS THE PLANS SPECIFICALLY CALL FOR THEIR ADJUSTMENT BY THE CONTRACTOR. EXISTING UTILITIES AND THEIR LOCATION, AS SHOWN ON THE PLANS, REPRESENT THE BEST INFORMATION OBTAINABLE FOR DESIGN. LOCATION INFORMATION HAS BEEN OBTAINED FROM THE VARIOUS UTILITY COMPANIES AND IS EITHER FROM COMPANY RECORD DRAWINGS OR COMPANY PROVIDED FIELD LOCATIONS. THE CONTRACTOR WILL BE REQUIRED TO WORK AROUND EXISTING UTILITIES WITHIN THE RIGHT-OF-WAY WHICH DO NOT CONFLICT WITH PROPOSED CONSTRUCTION.

TREES AND SHRUBS IN PUBLIC RIGHT-OF-WAY WHICH ARE IN DIRECT CONFLICT WITH PROPOSED NEW CONSTRUCTION SHALL BE REMOVED BY THE CONTRACTOR WITH THE ENGINEER'S APPROVAL. TREES AND SHRUBS WHICH ARE NOT IN DIRECT CONFLICT WITH PROPOSED NEW CONSTRUCTION SHALL BE SAVED AND PROTECTED FROM DAMAGE.

RUBBLE FROM THE REMOVAL OF MISCELLANEOUS STRUCTURES SHALL BE DISPOSED OF ON SITES TO BE PROVIDED BY THE CONTRACTOR AND APPROVED AS NOTED BELOW.

ALL DISPOSAL SITES MUST BE APPROVED BY THE KANSAS DEPARTMENT OF HEALTH AND ENVIRONMENT. MATERIAL EITHER STOCKPILED OR DISPOSED OF IN A FLOOD PLAIN WOULD REQUIRE A KANSAS STATE BOARD OF AGRICULTURE PERMIT. ANY MATERIAL DUMPED IN WATERS OF THE UNITED STATES OR WETLANDS IS SUBJECT TO U.S. CORPS OF ENGINEERS PERMITTING REGULATIONS. ANY MATERIAL BURIED OR STOCKPILED BEYOND APPROVED CONSTRUCTION LIMITS WOULD REQUIRE ADDITIONAL ARCHEOLOGICAL INVESTIGATIONS UNLESS BURIED IN A PREVIOUSLY APPROVED BORROW LOCATION.

CONTRACTOR SHALL SATISFY HIMSELF OF SURFACE AND SUBSURFACE CONDITIONS PRIOR TO BIDDING.

FIELD LOCATE ALL EXISTING UTILITIES PRIOR TO BEGINNING ANY EXCAVATION WORK. CONTACT THE KANSAS ONE-CALL SYSTEM AT 316-687-2470 AT LEAST 48 HOURS IN ADVANCE TO REQUEST FIELD LOCATES. FOR UTILITIES THAT ARE NOT MEMBERS OF THE KANSAS ONE-CALL SYSTEM, CONTACT THOSE COMPANIES DIRECTLY.

CONTRACTOR IS RESPONSIBLE FOR PRESERVING EXISTING PROPERTY IRONS. RE-ESTABLISH ANY EXISTING PROPERTY IRONS WHICH ARE DAMAGED OR DESTROYED BY CONSTRUCTION OPERATIONS, OR WHICH ARE COVERED BY 12" OR MORE OF FILL MATERIAL BY THIS PROJECT. SUCH IRONS SHALL BE RE-ESTABLISHED BY A LICENSED LAND SURVEYOR IN ACCORDANCE WITH STATE LAWS AND AT NO ADDITIONAL COST TO THE CITY.

THE CONTRACTOR SHALL REMOVE EXISTING ROAD SIGNS THAT INTERFERE WITH CONSTRUCTION. SIGNS DAMAGED THRU NEGLIGENCE OF THE CONTRACTOR SHALL BE REPLACED BY THE CONTRACTOR AT NO COST TO THE CITY. THE CONTRACTOR SHALL STOCKPILE THE SIGNS ALONG THE R/W (AT A CENTRAL LOCATION) FOR REMOVAL BY CITY FORCES.

ALL EXISTING PAVEMENT, SIDEWALK AND CURB AND GUTTER WITHIN THE CONSTRUCTION LIMITS SHALL BE SAW CUT, FULL DEPTH, TO THE NEAT LINES SHOWN ON THE PLANS, OR TO THE NEAREST JOINT, AND REMOVED, UNLESS OTHERWISE NOTED. SAW CUTTING SHALL BE SUBSIDIARY TO THE BID ITEM "PAVEMENT REMOVED".

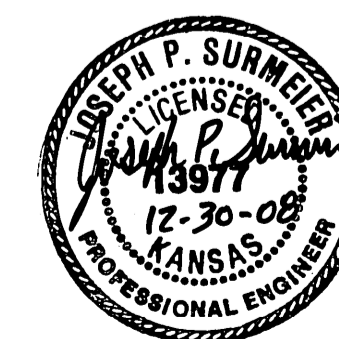
ALL RCB, STORM WATER SEWER, WATERLINE AND SANITARY SEWER EXCAVATION UNDER PROPOSED PAVEMENT SHALL BE SAND FILLED AND FLUSHED (JETTED AND VIBRATED) WITH WATER PER THE REQUIREMENTS LISTED IN THE STANDARD SPECIFICATIONS FOR THE CITY OF WICHITA, UNLESS FLOWABLE FILL OR OTHER IMPROVED BACKFILL MATERIAL IS OTHERWISE SPECIFIED. THE SAND FILL SHALL BE BROUGHT UP UNIFORMLY FROM THE TOP OF IMPROVED PIPE/RCB BEDDING TO AN ELEVATION 12 INCHES ABOVE THE TOP OF THE PIPE OR 2 FEET ABOVE THE BOTTOM OF PROPOSED PAVEMENT, WHICHEVER IS HIGHER. ALL COSTS FOR SAND FILLING AND FLUSHING SHALL BE INCLUDED IN THE UNIT PRICE BID FOR "SAND FILL, FLUSH AND VIBRATE". THIS ITEM SHALL BE PAID FOR AT THE UNIT PRICE BID PER LINEAR FOOT OF TRENCH FILLED REGARDLESS OF TRENCH DEPTH AND/OR PIPE SIZE UNLESS INDICATED OTHERWISE BY THE PLANS OR CONTRACT.

ALL LABOR, MATERIALS, AND EQUIPMENT NECESSARY TO MAKE CONNECTIONS TO EXISTING PIPE OR EXISTING SMALL STRUCTURES SHALL NOT BE PAID FOR DIRECTLY; BUT SHALL BE SUBSIDIARY TO OTHER ITEMS OF THE CONTRACT.

PLANS PREPARED BY



Professional Engineering Consultants, P.A.
303 S. TOPEKA • WICHITA, KANSAS 67202
316-262-2691 • FAX 316-262-3003



APPROVED - DATE

JAMES L. ARMOUR, P.E. CITY ENGINEER
CITY OF WICHITA, SEDGWICK COUNTY, KANSAS
CITY NO. 472-84657

CITY OF WICHITA PROJECT NO. 472-84657

INDEX OF SHEETS

- R1. Title Sheet
- R2. - R3. Typical Sections and Compaction Diagram
- R4. - R6. Road Plans
- R7. Coordinate Geometry Plan
- R8. Curve Stake Out Table
- R9. - R12. Storm Sewer Plan & Profiles
- R13. - R15. Intersection Details
- R16. Concrete Pavement
- R17. Contraction Joint Dowel Assemblies
- R18. Curb, Gutter and Combined Curb & Gutter
- R19. Miscellaneous Details
- R20. - R22. Driveway / Valley Gutter Details
- R23. - R24. Wheelchair Ramp Details
- R25. Sidewalk and Steps
- R26. - R30. Inlet and Manhole Details
- R31. Underdrain Details
- R32. - R33. Schedule of Inlets and Manholes
- R34. - R36. RCB Details
- R37. - R38. Summary and Recapitulation of Quantities
- R39. - R42. Erosion Control - BMP's
- R43. - R46. Traffic Signal Plan and Quantities
- R47. - R49. Signing and Marking Plan and Details
- R50. Traffic Handling and Construction Sequence
- R51. - R67. Traffic Control Plans
- R68. - R73. Cross Sections

PHASE 1C

- W1. Waterline Title Sheet
- W2. Waterline Key Map and General Notes
- W3. City of Wichita Waterline Map
- W4. Standard Water Assembly Details
- W5. - W8. Waterline Details
- W9. - W13. Waterline Plan / Profile
- W14. - W15. Miscellaneous Adjustment Plans
- W16. Sanitary Sewer Plan / Profile
- W17. Type "P" Manhole Details
- W18. Frame & Cover Details
- W19. Manhole Adjustment Details
- R39 - R42. Soil Erosion BMP Details

CORNEJO & SONS - CONTRACTOR
S. BREITENBACH - CITY OF WICHITA, FIELD PROJECT ENGINEER
M. FOSTER - CITY OF WICHITA, INSPECTOR
AS-BUILT NOT AVAILABLE
RELEASED DATE: 12/16/2009
: APROSAS 12/2/2010

CITY OF WICHITA, KANSAS

JAMES L. ARMOUR, P.E. - CITY ENGINEER

DECEMBER 2008

PLANS PREPARED BY

PROFESSIONAL ENGINEERING CONSULTANTS, P.A.
ENGINEERS
WICHITA, KANSAS

AS-BUILT INFORMATION IS NOT AVAILABLE

N-1,683,935.7289, E-1,651,972.1736
 @ Washington St., Sta. 895+49.3 5.7' Lt.
 Existing Sanitary Sewer Manhole
 Existing Top of Manhole Elev. = 1295.2
 Prop. MH Top Elev. = 1295.5
 Difference = +0.3'
 Replace MH Lid and Adjust MH Top Elevation.

N-1,683,978.4449, E-1,651,971.3166
 @ Washington St., Sta. 895+91.61 4.4' Lt.
 Existing Sanitary Sewer Manhole
 Existing Top of Manhole Elev. = 1295.3
 Prop. MH Top Elev. = 1295.5
 Difference = +0.2'
 Replace MH Lid and Adjust MH Top Elevation.

N: 1,684,161.4120, E: 1,651,929.8398
 Washington St., Sta. 895+78.10, 31.6' Rt.
 Install New 4" Sanitary Sewer Service Line and
 Cleanout to Sanitary Sewer Main. Reconnect to
 Existing Sanitary Sewer Service Line.
 (see detail, sheet no. W14)

N: 1,684,257.6156, E: 1,651,931.8569
 Washington St., Sta. 895+78.10, 31.6' Lt.
 Install New 4" Sanitary Sewer Service Line and
 Cleanout to Sanitary Sewer Main. Reconnect to
 Existing Sanitary Sewer Service Line.
 (see detail, sheet no. W14)

Relocate Existing Water Meter
 from Washington St., Sta. 902+41.53, 21.4' Lt.
 to (N: 1,684,627.2612, E: 1,651,928.1604)
 Washington St., Sta. 902+41.53, 39.0" Lt.
 Proposed Top of Box Elev. = 1295.3
 Install 1" Service Line to Water Main *

N-1,684,701.0903, E-1,651,958.2972
 @ Washington St., Sta. 903+13.98 12.0' Lt.
 Existing Sanitary Sewer Manhole
 Existing Top of Manhole Elev. = 1295.0
 Prop. MH Top Elev. = 1295.1
 Difference = +0.1'
 Replace MH Lid and Adjust MH Top Elevation.

Relocate Existing Water Meter
 from Washington St., Sta. 894+66.76, 24.2' Lt.
 to (N-1,683,852.4700, E-1,651,954.2019)
 Washington St., Sta. 894+65.82, 31.4' Lt.
 Proposed Top of Box Elev. = 1295.5
 Install 1" Service Line to Water Main *

Relocate Existing Water Meter
 from Washington St., Sta. 896+07.67, 22.0' Lt.
 to (N: 1,684,010.4272, E: 1,651,931.5972)
 Washington St., Sta. 896+24.50, 43.5' Lt.
 Proposed Top of Box Elev. = 1295.6
 Install 1" Service Line to Water Main *

Relocate Existing Water Meter
 from Washington St., Sta. 896+97.11, 17.3' Lt.
 to (N: 1,684,078.5732, E: 1,651,929.3827)
 Washington St., Sta. 896+92.11, 43.5' Lt.
 Proposed Top of Box Elev. = 1295.4
 Install 1" Service Line to Water Main *

N: 1,684,105.6897, E: 1,651,930.9689
 Washington St., Sta. 897+19.57, 42.4' Lt.
 Install New 4" Sanitary Sewer Service Line and
 Cleanout to Sanitary Sewer Main. Reconnect to
 Existing Sanitary Sewer Service Line.
 (see detail, sheet no. W14)

Relocate Existing Water Meter
 from Washington St., Sta. 898+74.88, 17.05' Lt.
 to (N: 1,684,267.9684, E: 1,651,930.0216)
 Washington St., Sta. 898+81.34, 39.5" Lt.
 Proposed Top of Box Elev. = 1295.1
 Install 1" Service Line to Water Main *

Relocate Existing Water Meter
 from Washington St., Sta. 898+77.03, 17.53' Lt.
 to (N: 1,684,273.2714, E: 1,651,930.1335)
 Washington St., Sta. 898+86.34, 39.5" Lt.
 Proposed Top of Box Elev. = 1295.1
 Install 1" Service Line to Water Main *

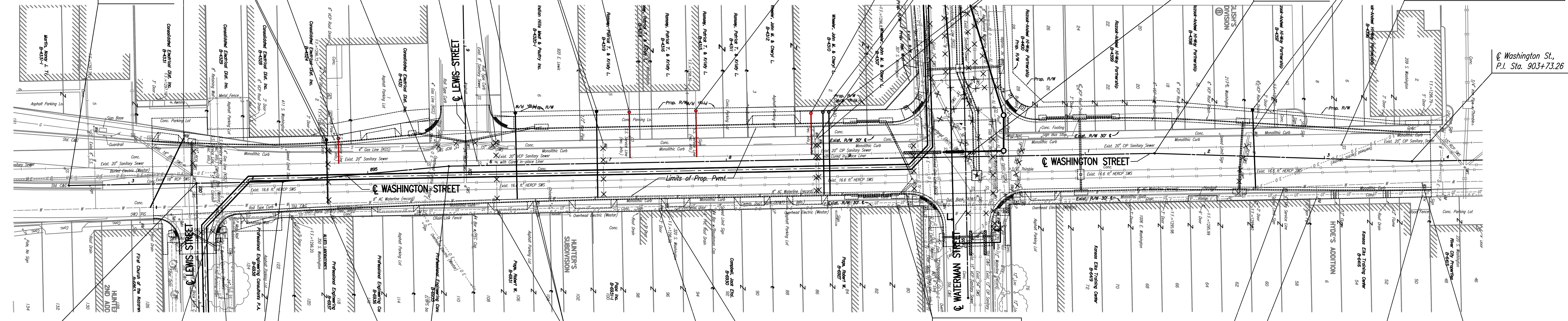
Reconnect Water Service Line and Meter
 N-1,683,733.1191, E-1,651,952.8247
 Washington St., Sta. 893+46.43, 37.8' Lt.
 Adjust Existing Water Meter Top Elevation and
 Install 1" Service Line to Water Main *
 Existing Top of Box Elev. = 1295.9
 Proposed Top of Box Elev. = 1295.4
 Difference = -0.5'

@ Washington St.,
 P.I. Sta. 892+49.60

@ Waterman St., Sta. 134+24.22 =
 @ Washington St., Sta. 900+00.00

@ Washington St.,
 P.I. Sta. 901+58.00

@ Washington St.,
 P.I. Sta. 903+73.26



No Adjustments Needed

@ Washington St.,
 P.I. Sta. 895+68.00

No Adjustments Needed

No Adjustment Needed

No Adjustments Needed

No Adjustment Needed

No Adjustment Needed

No Adjustment Needed

@ Washington St., Sta. 893+56.37 =
 @ Lewis St., Sta. 100+00.00

@ Washington St.,
 P.I. Sta. 894+28.49

N-1,683,856.1233, E-1,652,016.6913
 @ Washington St., Sta. 894+65.86, 31.2' Rt.
 Adjust Existing Water Meter Top Elevation
 Existing Top of Box Elev. = 1295.7
 Proposed Top of Box Elev. = 1295.6
 Difference = -0.1'

N-1,684,130.7373, E-1,652,011.7646
 @ Washington St., Sta. 897+43.15, 38.8' Rt.
 Adjust Existing Water Meter Top Elevation
 Existing Top of Box Elev. = 1295.3
 Proposed Top of Box Elev. = 1295.2
 Difference = -0.1'

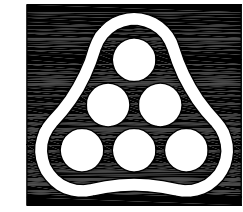
N-1,684,652.8377, E-1,651,994.6651
 @ Washington St., Sta. 902+66.87, 25.9' Rt.
 Adjust Existing Water Meter Top Elevation (C.O.W. #30007)
 Existing Top of Box Elev. = 1294.8
 Proposed Top of Box Elev. = 1294.7
 Difference = -0.1'

Relocate Existing Fire Hydrant
 from Washington St., Sta. 893+75.50, 45.9' Lt.
 to (N: 1,683,764.0463, E: 1,652,039.0006)
 Washington St., Sta. 893+75.63, 48.9' Lt.
 Proposed Bury Line Elev. = 1295.8

N-1,683,762.2307, E-1,652,010.2840
 Washington St., Sta. 893+74.34, 20.2' Rt.
 Adjust Existing Water Valve Box (C.O.W. #11447)
 Existing Top of Box Elev. = 1295.11
 Proposed Top of Box Elev. = 1295.27
 Difference = +0.16'

* THE CONTRACTOR SHALL PROVIDE ALL PAVEMENT CUTS, EXCAVATION AND REMOVAL TO THE WATER MAIN IN PREPARATION FOR THE SERVICE TAP. THE CITY OF WICHITA WATER UTILITIES DEPARTMENT WILL INSTALL THE SERVICE TAP. CONTACT GREG LOLLLEY AT 268-4555 TO SCHEDULE. CONTRACTOR SHALL PROVIDE A MINIMUM OF 72 HOURS NOTICE TO WATER UTILITIES DEPARTMENT. ALL PAVEMENT CUTS, EXCAVATION, THRUST BLOCKING, BACKFILLING, PAVEMENT RECONSTRUCTION AND OTHER INCIDENTALS NECESSARY FOR THE NEW SERVICE TAP, SERVICE LINE, RESETTling THE EXISTING METER AND RECONNECTING TO THE SERVICE LINE DOWNSTREAM OF THE METER SHALL BE CONSIDERED SUBSIDIARY TO THE UNIT PRICE BID FOR "RELOCATE EXISTING WATER METER" OR "RECONNECT WATER SERVICE LINE AND METER".

X = Denotes Pipe to be removed.
 (See Paving and Storm Sewer Plans also.
 C.O.W. Project No. 472-84657)

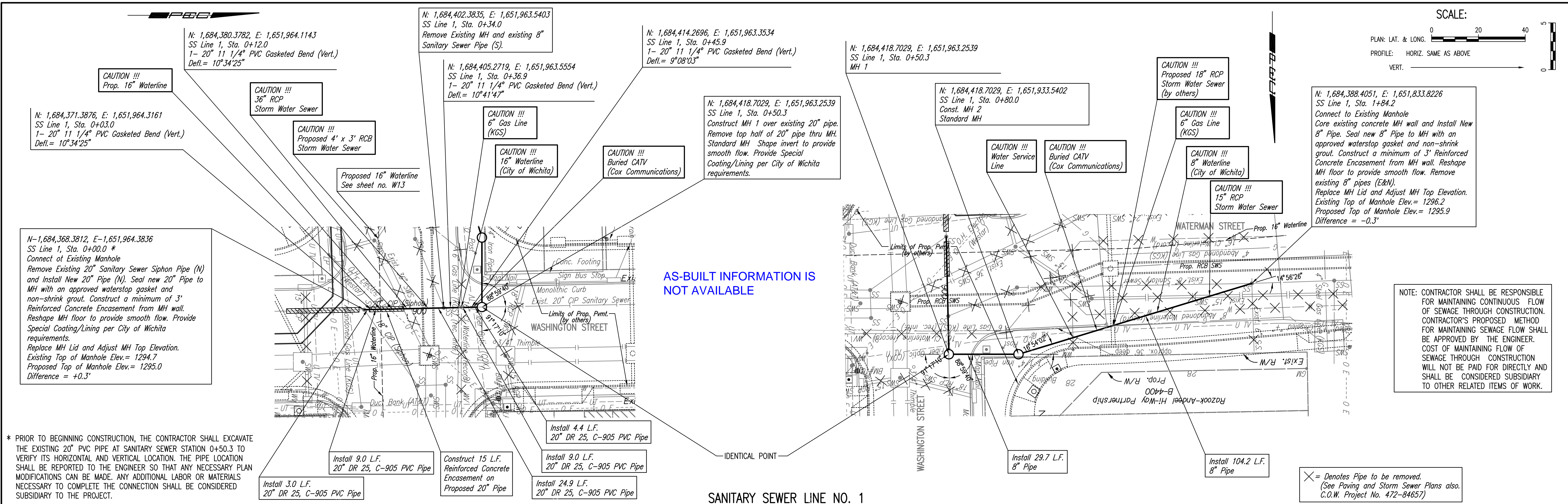


No.	Revision	By	Date
SOUTHEAST 48" WATERLINE - PHASE 1C WASHINGTON/WATERMAN TO LEWIS/DA MISCELLANEOUS ADJUSTMENT PLANS JAMES L. ARMOUR, P.E. - CITY ENGINEER CITY OF WICHITA PROJECT NO. 448-90417 Professional Engineering Consultants, P.A. 303 S. TOPKA • WICHITA, KANSAS 67202 316-262-2691 • FAX 316-262-3003			
Designed by	MDK, EJB	Job No.	35-05787-001-42
Drawn by	RFT	Date	March 2006
			SH. W15 of 23

PLAN	CHECKED	CHECKED
BY		
DATE		

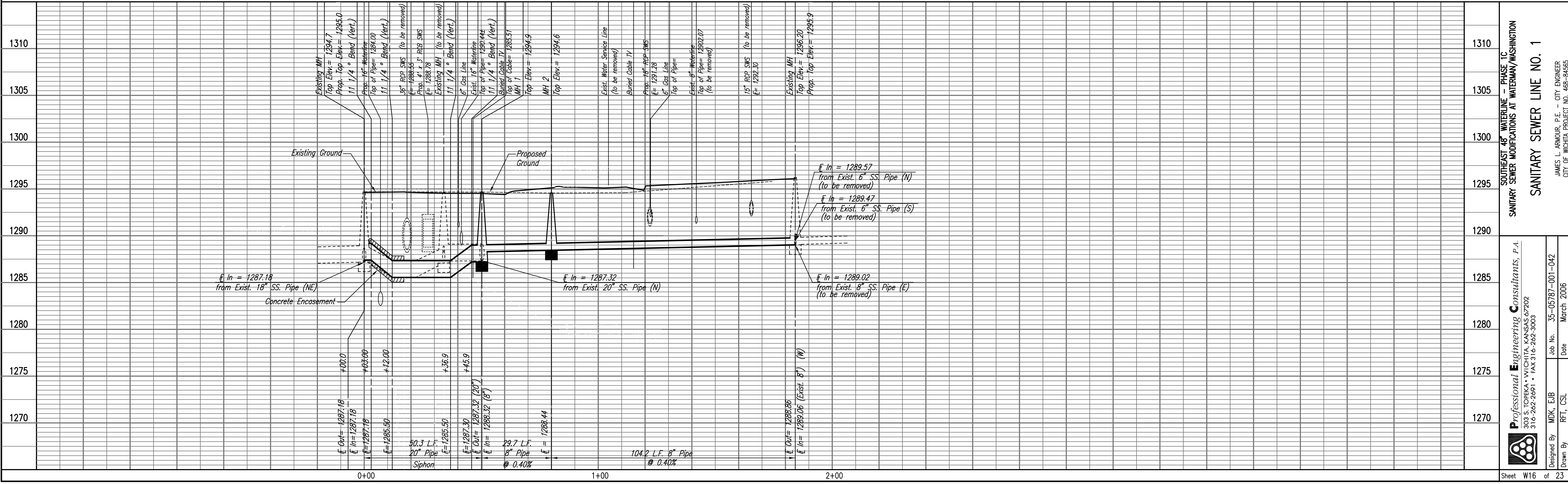
PROFILE	CHECKED	CHECKED
BY		
DATE		

Sheet 12-31-2008 4:36:16 PM by CSI
 Plot Scale 1:20 01-02-2009 10:51:58 AM by MAC
 G:\2005\05787\001\Phase C\05787-001-PhaseC-C-SSPP01



* PRIOR TO BEGINNING CONSTRUCTION, THE CONTRACTOR SHALL EXCAVATE THE EXISTING 20" PVC PIPE AT SANITARY SEWER STATION 0+50.3 TO VERIFY ITS HORIZONTAL AND VERTICAL LOCATION. THE PIPE LOCATION SHALL BE REPORTED TO THE ENGINEER SO THAT ANY NECESSARY PLAN MODIFICATIONS CAN BE MADE. ANY ADDITIONAL LABOR OR MATERIALS NECESSARY TO COMPLETE THE CONNECTION SHALL BE CONSIDERED SUBSIDIARY TO THE PROJECT.

NOTE: CONTRACTOR SHALL BE RESPONSIBLE FOR MAINTAINING CONTINUOUS FLOW OF SEWAGE THROUGH CONSTRUCTION. CONTRACTOR'S PROPOSED METHOD FOR MAINTAINING SEWAGE FLOW SHALL BE APPROVED BY THE ENGINEER. COST OF MAINTAINING FLOW OF SEWAGE THROUGH CONSTRUCTION WILL NOT BE PAID FOR DIRECTLY AND SHALL BE CONSIDERED SUBSIDIARY TO OTHER RELATED ITEMS OF WORK.



SANITARY SEWER LINE NO. 1

SOUTHEAST 48" WATERLINE - PHASE 1C
 SANITARY SEWER MODIFICATIONS AT WATERMAN/WASHINGTON

Professional Engineering Consultants, P.A.
 603 S. TOPICKA AVENUE, KANSAS CITY, MO 64108
 316-262-2691 • FAX 316-262-3003

Designed By MDK, EJB
 Drawn By RFT, CSL

Job No. 35-05787-001-042
 Date March 2006

JAMES L. ARMOUR, P.E. - CITY ENGINEER
 CITY OF WICHITA PROJECT NO. 468-84565

Sheet W16 of 23

PLAN	CHECKED	DATE
	CHECKED	

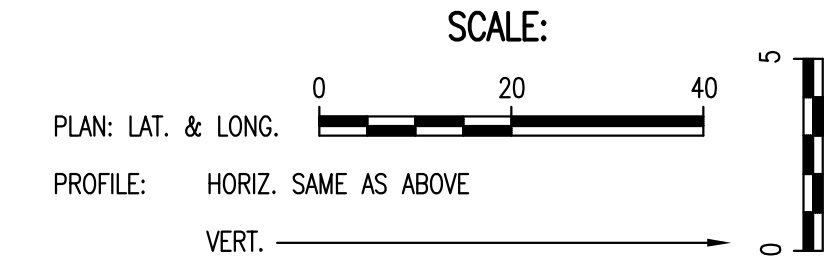
PROFILE	CHECKED	DATE
	CHECKED	

Saved: 01-02-2009 9:13:00 AM by CSI
 Plot Scale: 1:20 01-02-2009 10:05:39 AM by MAC
 G:\2005\05787\001\Phase C\05787-001-Phase C-WLPP01

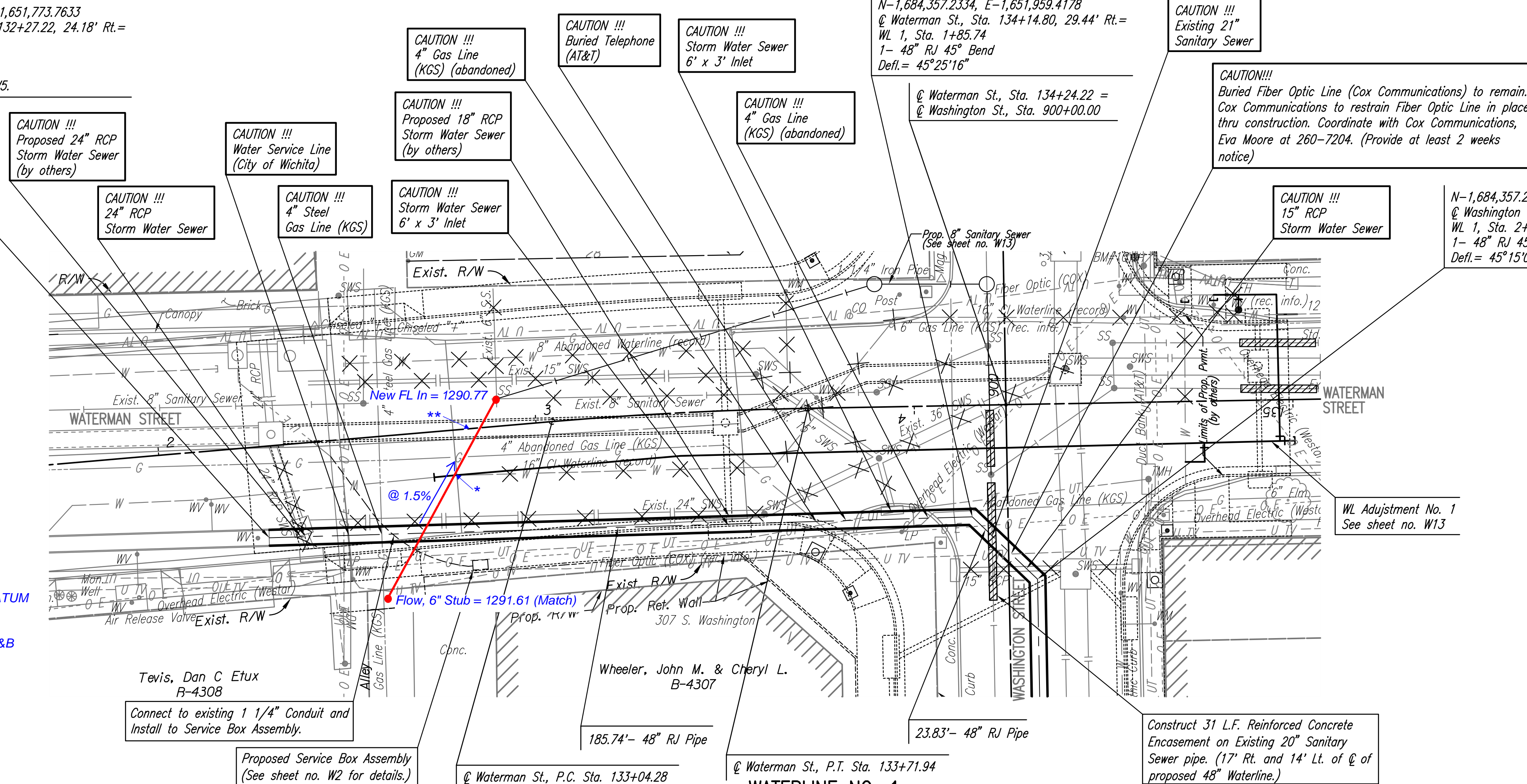
N-1,684,351.7041, E-1,651,773.7633
 @ Waterman St., Sta. 132+27.22, 24.18' Rt.=
 WL 1, Sta. 0+00.00*
 Existing 48" Waterline
 48" Connection
 See detail sheet no. W5.

N-1,684,357.2334, E-1,651,959.4178
 @ Waterman St., Sta. 134+14.80, 29.44' Rt.=
 WL 1, Sta. 1+85.74
 1- 48" RJ 45° Bend
 Defl.= 45°25'16"

N-1,684,357.2334, E-1,651,959.4178
 @ Washington St., Sta. 899+53.79, 7.50' Lt.=
 WL 1, Sta. 2+09.57
 1- 48" RJ 45° Bend
 Defl.= 45°15'00"



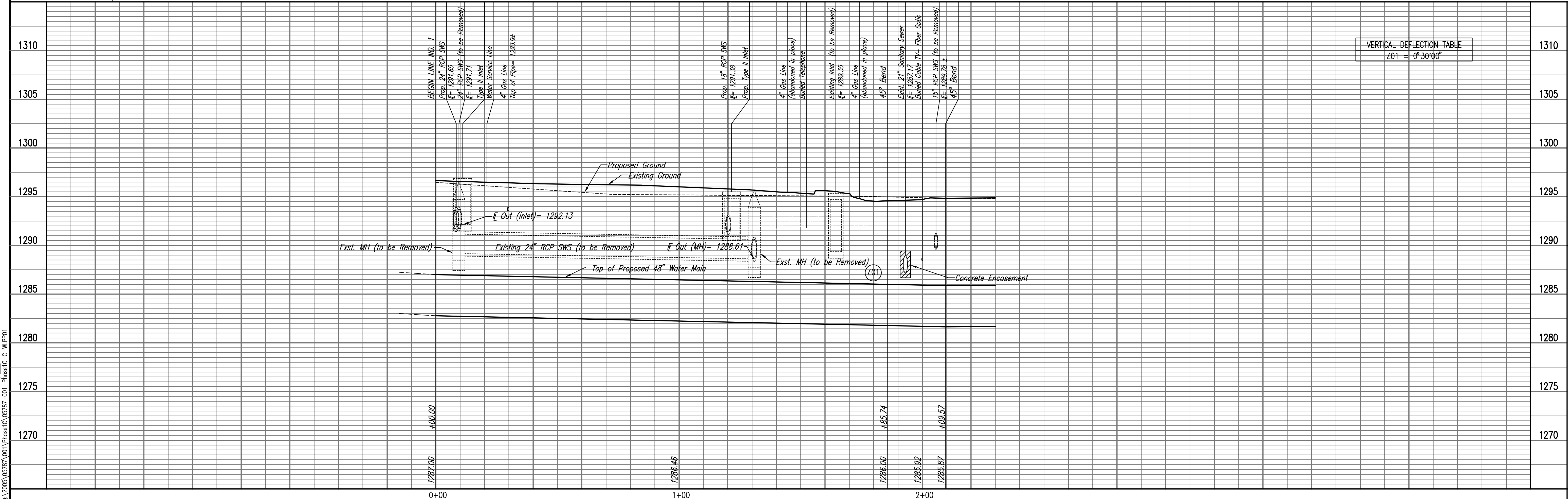
Note:
 * FL new 6" DI @ Water crossing = 1291.08
 Top 16" Waterline = 1289.41
 Clear by 1.67'
 ** SS Flow (new 6" DI) through Box = 1290.86
 Flow Box @ SS crossing = 1289.70
 Clear from bottom of box by 1.16' (+-14")
 GRADE INFORMATION ARE IN THE NEW 88 DATUM
 WHICH DIFFERS FROM THE PLAN DATUM.
 PRIVATE LINE AND AS-BUILT PROVIDED BY R&B



* PRIOR TO BEGINNING CONSTRUCTION, THE CONTRACTOR SHALL EXCAVATE THE EXISTING 48" WATERLINE AT STATION 0+00.00 TO VERIFY PIPE SIZE, TYPE, FITTINGS, AND HORIZONTAL AND VERTICAL LOCATION. THE CONTRACTOR SHALL REPORT HIS FINDINGS TO THE ENGINEER SO THAT ANY NECESSARY PLAN MODIFICATIONS CAN BE MADE. ANY ADDITIONAL LABOR OR MATERIALS NECESSARY TO COMPLETE THE CONNECTION SHALL BE CONSIDERED SUBSIDIARY TO THE PROJECT.

✕ = Denotes Pipe to be removed. (See Paving and Storm Sewer Plans also. C.O.W. Project No. 472-84657)

Unless noted otherwise, elevations shown are top of pipe



VERTICAL DEFLECTION TABLE	
Station	Deflection
2+09.57	0°30'00"

WATERLINE NO. 1

SOUTHEAST 48" WATERLINE - PHASE 1C
 WASHINGTON/WATERMAN TO LEWIS/JDA

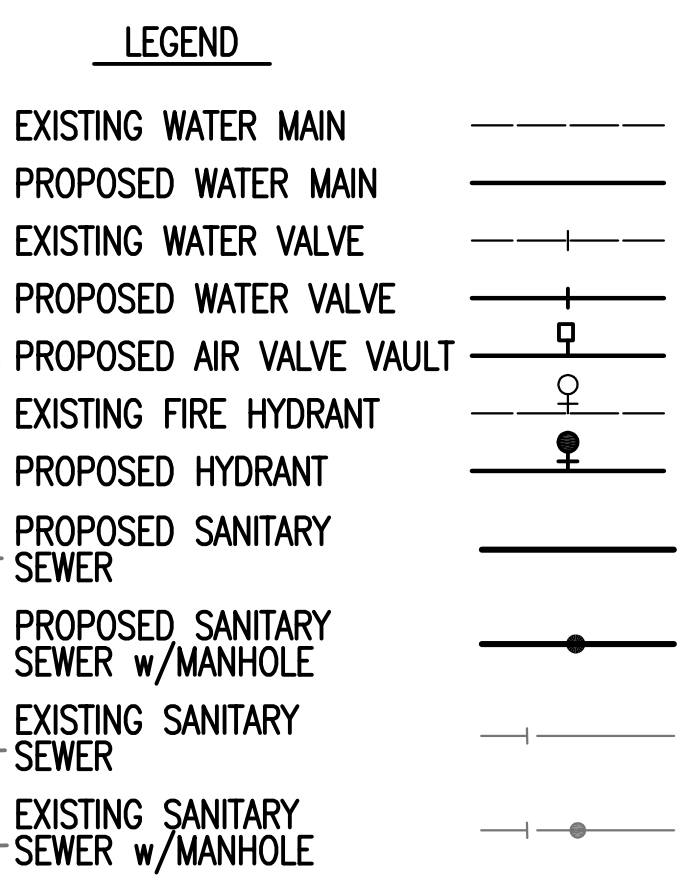
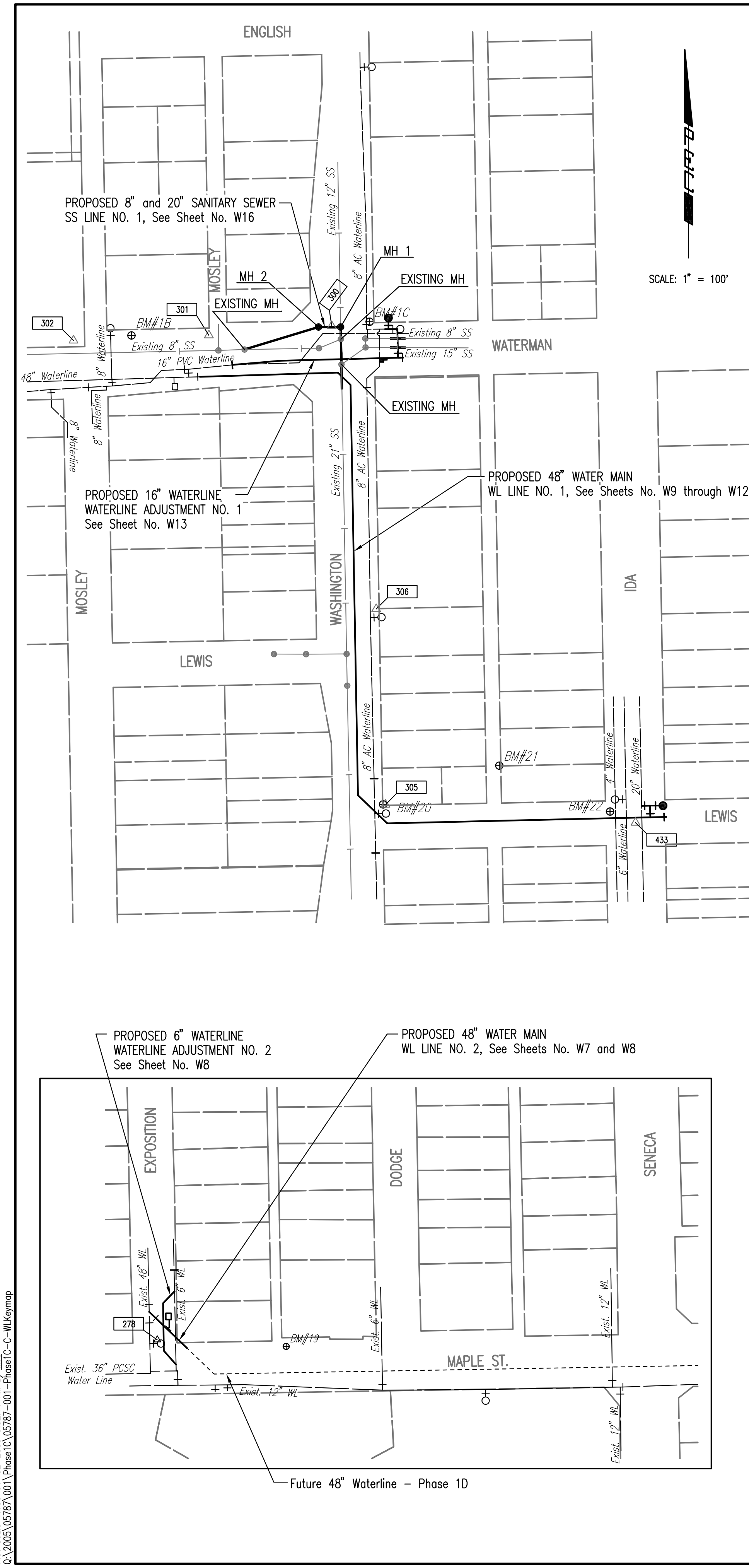
Professional Engineering Consultants, P.A.
 603 S. TOPICKA AVENUE, KANSAS CITY, MO 64108
 316-262-2691 • FAX 316-262-3003

Designed By: MDK, EJB
 Drawn By: RFI, CSL

Job No. 35-05787-001-042
 Date: March 2006

Sheet W9 of 23

JAMES L. ARMOUR, P.E. - CITY ENGINEER
 CITY OF WICHITA PROJECT NO. 448-90417



SEQUENCE OF CONSTRUCTION:
 THE PROPOSED 48" TIE-IN AT EXPOSITION AND MAPLE ST. (WL LINE NO.2, STA 0+00.00) SHALL BE COMPLETED BY APRIL 3, 2009. THE EXISTING 48" WATERLINE MAY BE TAKEN OUT OF SERVICE FOR 3 CONSECUTIVE DAYS (MAXIMUM). CONTRACTOR SHALL COORDINATE AND PROVIDE 1 WEEK ADVANCE NOTICE WITH CITY OF WICHITA WATER UTILITIES DEPARTMENT OF ALL WORK ASSOCIATED WITH THE PROPOSED TIE-IN. CONTACT GREG LOLLEY AT 316-268-4555.

BENCHMARK LIST

- BM#1B - CHISELED SQUARE ON FOOTING LEVEL WITH GROUND AT SW CORNER OF LOADING DOCK, LOCATED ON THE S SIDE OF A BUILDING AT 906 E. WATERMAN STREET ELEV.=1296.64
- BM#1C - CHISELED SQUARE ON TOP OF CURB AT N END OF CURB RETURN AT NE CORNER OF WATERMAN STREET AND WASHINGTON STREET ELEV.=1294.95
- BM #19 - CHISELED "d" ON TOP CURB ON NORTH SIDE OF MAPLE STREET ON EAST SIDE OF ALLEY LOCATED WEST OF DODGE STREET. ELEV.= 1297.61
- BM#20 - RR SPIKE ON THE EAST FACE OF THE LIGHT POLE AT THE NE CORNER OF WASHINGTON AND LEWIS ELEV.=1296.67
- BM#21 - RR SPIKE AT THE WEST FACE OF THE POWER POLE ON THE EAST SIDE ALLEY EAST OF WASHINGTON 70± NORTH OF LEWIS STREET ELEV.=1297.04
- BM#22 - CHISELED SQUARE AT THE WEST PC CURB RETURN NW CORNER OF LEWIS AND IDA STREETS ELEV.=1296.01
- BM#23 - CHISELED SQUARE AT THE SE CORNER OF THE CONCRETE SIGN BASE ON THE EAST SIDE BUILDING AT 167 S WASHINGTON STREET. ELEV.=1296.83

GENERAL NOTES

- ALL ELEVATIONS SHOWN ARE NGVD 29 DATUM.
- CONTRACTOR WILL BE REQUIRED TO PROVIDE A MINIMUM ADVANCE NOTICE OF FORTY-EIGHT (48) HOURS TO UTILITY COMPANIES PRIOR TO STARTING ANY EXCAVATION AS FOLLOWS:
 KANSAS ONE-CALL 687-2470
 THE CONTRACTOR MUST NOTIFY THE FOLLOWING IN CASE OF AN EMERGENCY:
 COX COMMUNICATIONS 262-0661
 KANSAS GAS SERVICE 832-3169
 WESTAR ENERGY 383-8600
 BLACK HILLS ENERGY 1(800)-527-0357
 AT&T 1(800)-870-8390
 CITY OF WICHITA WATER DEPARTMENT 262-6000
 CITY OF WICHITA SEWER MAINTENANCE 262-6000
- ALL WATER MAINS AND APPURTENANCES SHALL BE INSTALLED IN ACCORDANCE WITH CITY OF WICHITA, KANSAS STANDARD SPECIFICATIONS, AND PROJECT SUPPLEMENTAL SPECIFICATIONS.
- THE CONTRACTOR SHALL NOT START WORK ON THE PROJECT UNTIL THE PROJECT INSPECTOR IS ASSIGNED TO THE PROJECT AND IS PRESENT ON THE SITE. ANY WORK DONE WITHOUT INSPECTION WILL BE REQUIRED TO BE UNCOVERED FOR INSPECTION.
- OPENING AND CLOSING WATER VALVES SHALL BE DONE SLOWLY TO PREVENT DAMAGE TO THE WATER DISTRIBUTION SYSTEM FROM WATER HAMMER. ALL VALVES CLOSED BY THE CONTRACTOR MUST BE REOPENED AS NEW CONSTRUCTION PERMITS. PROJECT INSPECTOR MUST ASCERTAIN THAT ANY VALVE CLOSED BY THE CONTRACTOR IS REOPENED. CONTRACTOR WILL BE PERMITTED TO OPERATE WATER VALVES ONLY WHEN THE PROJECT INSPECTOR ASSIGNED TO THE PROJECT IS PRESENT.
- EACH BIDDER SHALL VISIT THE SITE OF THE PROJECT BEFORE SUBMITTING THE PROPOSAL FOR THIS WORK SO THAT HE WILL BE FULLY INFORMED OF THE EXISTING FIELD CONDITIONS AND THE OBSTACLES WHICH MIGHT BE ENCOUNTERED. UPON AWARD OF THE CONTRACT THE CONTRACTOR WILL NOT BE GRANTED ANY ADDITIONAL COMPENSATION WITH REGARDS TO TIME AND MONEY FOR CONDITIONS THAT MAY HAVE BEEN EVALUATED DURING ANY INSPECTION OF THE SITE.
- THE CONTRACTOR SHALL BE RESPONSIBLE FOR MAINTAINING CONTINUOUS FLOW OF SEWAGE THROUGH CONSTRUCTION. THE COST OF MAINTAINING FLOW OF SEWAGE THROUGH CONSTRUCTION WILL NOT BE PAID FOR DIRECTLY AND THIS COST SHALL BE CONSIDERED AS SUBSIDIARY TO THE OTHER RELATED ITEMS OF WORK.
- THE TEST PRESSURE FOR THE NEWLY CONSTRUCTED WATERLINE SHALL BE 150 PSI, AND ALL FITTINGS, PIPE, AND APPURTENANCES INSTALLED SHALL HAVE A PRESSURE RATING OF 150 PSI (MIN.) OR AS SPECIFIED. ALL WATERLINES SHALL BE TESTED AND APPROVED PRIOR TO THE PLACEMENT OF ANY NEW PAVEMENT. SEE PAVEMENT AND DRAINAGE PLANS AND PROJECT SPECIAL PROVISIONS FOR PAVEMENT SCHEDULE AND SEQUENCE OF CONSTRUCTION.
- UNLESS NOTED OTHERWISE IN THE PLANS, THE CONTRACTOR MAY USE RESTRAINED JOINT 48" DUCTILE IRON OR RESTRAINED JOINT 48" PCPC (PRESTRESSED CONCRETE CYLINDER PIPE) FOR THE WATERLINE AS SPECIFIED IN THE PROJECT SPECIAL PROVISIONS.
- THE CONTRACTOR SHALL RESTRAIN ALL BENDS, VALVES, AND TEES THROUGH THE USE OF RESTRAINED JOINT PIPE AS SPECIFIED. ALL PIPE/FITTINGS FOR THIS PROJECT SHALL BE RESTRAINED JOINT. OTHER METHODS OF RESTRAINT MAY BE SUBMITTED IN WRITING TO THE DESIGN ENGINEER FOR APPROVAL AT LEAST 7 DAYS PRIOR TO BIDDING. RESTRAINED JOINT PIPE SHALL BE INCLUDED IN THE PRICE BID FOR PIPE IN PLACE.

CONTROL POINTS

- Pt. #278 N-1,683,565.5783, E-1,643,603.0169
1" iron pipe in thimble at North R/W of Maple Street at centerline of Exposition Street.
- Pt. #300 N-1,684,420.0038, E-1,651,951.2221
Mag. Nail in the Concrete Joint at the Northwest Corner of Waterman St. and Washington St.
2.5' E and 0.5' S South of the South east Corner Brick Building
- Pt. #301 N-1,684,407.5324, E-1,651,785.7849
Chiseled "+" on the Northeast Corner of the Area Inlet on the North Side of Waterman St.
10.0' S of the Southeast Corner of the Brick Building West Side of the Alley West of Washington St.
- Pt. #302 N-1,684,400.5685, E-1,651,603.3677
Chiseled "+" on the Concrete Pavement
10.0' W of the West rail on the Railroad
8.4' N of the North Edge of the Concrete Pavement of Waterman St.
100± East of Rock Island St.
- Pt. #305
Mag. Nail at NE Corner Washington and Lewis St.
2.0' N of the North Edge of the Sidewalk
6.3' E of the East Curb Washington
- Pt. #306
Chiseled "+" in Center Sidewalk East side of Washington Midway between Waterman and Lewis
11.3' North of the Fire Hydrant
1.5' E of the East Curb Washington
- Pt. #433
3/4" IP in Thimble @ Ida and Lewis Sts.
- Pt. #405
3/4" IP in Thimble @ English West of Washington on West Right of Way Washington Street
- Pt. #404
3/4" IP in Thimble @ English East of Washington on East Right of Way Washington Street
- Pt. #412
Found Chiseled "+"
47.41' West to "+" West Curb Washington Street
0.37' West to High Edge West Curb North Bound Lane Washington Street
52.40' ENE to "+" South face on NE Pier US 54 Bridge
80.92' SE to "+" at East E Walk Washington at North face N Pier East Bound Bridge

- PIPE DEFLECTIONS SHOWN IN THE PLANS MAY EXCEED THE MAXIMUM PIPE DEFLECTIONS ALLOWABLE PER THE PIPE MANUFACTURERS RECOMMENDATIONS. THESE PIPE DEFLECTIONS MAY BE ACCOMPLISHED THROUGH MORE THAN ONE JOINT. PIPE DEFLECTIONS AT A JOINT SHALL NOT EXCEED THE MANUFACTURERS RECOMMENDATIONS.
- ALL FITTINGS INSTALLED SHALL NOT BE BACKFILLED UNTIL THE FIELD ENGINEER ESTABLISHES TIES TO ESTABLISHED LANDMARKS.
- ALL COUPLINGS INSTALLED PER THE DETAIL SHEETS SHALL INCLUDE A 1/2" GAP BETWEEN THE FLAN END PIPES BEING JOINED.
- THE CONTRACTOR SHALL PROVIDE CORROSION CONTROL ITEMS AS OUTLINED IN THE SUPPLEMENTAL SPECIFICATIONS FOR EACH TYPE OF PIPE BID. ALL PIPE CONNECTIONS MADE WITH PIPING OF DISSIMILAR MATERIALS SHALL INCLUDE DIELECTRIC ISOLATION. ALL CORROSION CONTROL MEASURES REQUIRED SHALL BE INCLUDED IN THE PRICE BID FOR PIPE.
- THE CONTRACTOR SHALL PROVIDE THREADED RODS AND COLLARS TO ANCHOR VALVES AND SLEEVES TO PROPOSED RESTRAINED JOINT PIPING, AS SHOWN IN THE PLANS. THREADED RODS AND COLLARS SHALL BE HIGH STRENGTH, HEAT TREATED CORTEN STEEL AND SHALL CONFORM TO ASTM A242, TYPE 2, AS MANUFACTURED BY STAR NATIONAL PRODUCTS OR APPROVED EQUAL. THE NUMBER OF TIEBOLT RESTRAINERS AND FASTENING METHOD SHALL BE IN ACCORDANCE WITH THE MANUFACTURERS RECOMMENDATIONS. TIE BOLTS SHALL BE DESIGNED FOR A TOTAL DESIGN PRESSURE OF 200 PSI.
- CONTRACTOR SHALL PROVIDE POSITIVE DRAINAGE AWAY FROM ALL MANHOLE COVERS.
- MANHOLES SHALL BE TYPE "P" MANHOLES. MANHOLES SHALL BE CONSTRUCTED IN ACCORDANCE WITH THE STANDARD SPECIFICATIONS AND THE STANDARD DETAIL DRAWINGS.
- ALL WATERLINE AND SANITARY SEWER EXCAVATION WITHIN EXISTING OR PROPOSED PAVEMENT SECTIONS SHALL BE SAND FILLED (JETTED AND VIBRATED) WITH WATER PER THE REQUIREMENTS LISTED IN THE STANDARD SPECIFICATIONS FOR THE CITY OF WICHITA, UNLESS FLOWABLE FILL OR OTHER IMPROVED BACKFILL MATERIAL IS OTHERWISE SPECIFIED. THE SAND FILL SHALL BE BROUGHT UP UNIFORMLY TO AN ELEVATION 12 INCHES ABOVE THE TOP OF THE PIPE OR 2 FEET BELOW THE BOTTOM OF PROPOSED PAVEMENT, WHICHEVER IS HIGHER. ALL COSTS FOR SAND FILLING AND FLUSHING SHALL BE INCLUDED IN THE UNIT PRICE BID FOR "SAND FILL, FLUSH AND VIBRATE". THIS ITEM SHALL BE PAID FOR AT THE UNIT PRICE BID PER LINEAR FOOT OF TRENCH FILLED REGARDLESS OF TRENCH DEPTH AND/OR PIPE SIZES UNLESS INDICATED OTHERWISE BY PLANS OR CONTRACT. THE ESTIMATED LENGTH OF WATERLINE AND SANITARY SEWER TRENCH TO BE SAND FILLED AND FLUSHED FOR THIS PROJECT IS:

SAND FILL, FLUSH AND VIBRATE = 1191 L.F. (WATERLINE)
SAND FILL, FLUSH AND VIBRATE = 185 L.F. (SANITARY SEWER)
- WHEN REMOVING WATER AND SANITARY SEWER LINES AS SHOWN IN THE PLANS, THE CONTRACTOR SHALL CAP OR PLUG THE ENDS OF THE PIPES REMAINING IN PLACE PRIOR TO REMOVAL. ALL COSTS FOR THE REMOVAL OF EXISTING WATER AND SANITARY SEWER LINES AS PART OF CONSTRUCTION SHALL BE CONSIDERED SUBSIDIARY TO THE LUMP SUM PRICE BID FOR "SITE CLEARING" FOR THE RESPECTIVE WATERLINE AND SANITARY SEWER PROJECTS.
- IT SHOULD BE NOTED THAT OTHER BURIED LINES AND CABLE MAY EXIST WHICH ARE NOT SHOWN ON THESE PLANS. THE CONTRACTOR SHALL EXERCISE EXTREME CAUTION DURING TRENCHING OPERATIONS TO AVOID DAMAGING THESE LINES AND CABLES. ANY UTILITIES DAMAGED SHALL BE REPLACED OR REPAIRED IMMEDIATELY AS DIRECTED BY THE ENGINEER AT THE CONTRACTOR'S EXPENSE. THE CONTRACTOR SHALL PROTECT FROM DAMAGE AND SUPPORT EXISTING UTILITIES THROUGH CONSTRUCTION AS APPROVED BY THE UTILITY OWNER AND THE ENGINEER AT THE CONTRACTOR'S EXPENSE.
- WHERE THE IMPROVEMENTS CROSS EXISTING PUBLIC OR PRIVATE UTILITIES WHICH ARE NOT TO BE ADJUSTED BY OTHERS, THE CONTRACTOR SHALL PROVIDE THE MATERIAL AND MEANS TO PROTECT AND SUPPORT SAID UTILITIES DURING CONSTRUCTION TO THE SATISFACTION OF THE ENGINEER.
- THE CONTRACTOR SHALL MAINTAIN WATER DISTRIBUTION DURING ALL PHASES OF CONSTRUCTION. REQUESTS FOR SHORT-TERM WATER SERVICE INTERRUPTIONS SHALL BE MADE AT LEAST 72 HOURS IN ADVANCE TO THE CITY OF WICHITA AND WILL BE SUBJECT TO APPROVAL BY THE ENGINEER. SUBJECT TO APPROVAL, THE CONTRACTOR SHALL NOTIFY ALL AFFECTED WATER CUSTOMERS OF PENDING CONSTRUCTION AT LEAST 48 HOURS IN ADVANCE. THE CONTRACTOR SHALL COORDINATE THE SHUT DOWN AND THE ISOLATION OF EXISTING WATER MAINS FOR CONNECTIONS TO THE NEW MAIN WITH THE WICHITA WATER DEPARTMENT.

CONDUIT/SERVICE BOX ASSEMBLY

The Contractor shall install a continuous conduit from WL No.1 Sta. 0+00.00 to WL No.1 Sta. 11+91.00. The conduit shall be CARLON OPTIC-GARD 1-1/4" diameter, SDR 11, PE Pipe or approved equal. The pipe shall be ribbed/smooth, orange in color, and shall contain a pre-installed poly pull rope. Where necessary, the pipe shall be jointed with metallic threaded sleeve couplings as manufactured by Carlon, or approved equal. Stainless Steel bands shall be installed every 20 feet along the 48" Waterline to secure the conduit to the top of the waterline.

The service box assembly shall be QUAZITE COMPOSITE Part No. PG3048BA18 service box (30" W x 48" L x 18" D) with a QUAZITE COMPOSITE Part No. PG3048HA00 heavy duty locking cover, or approved equal. The locking cover for the service box shall be imprinted with "CITY OF WICHITA".

The conduit entering and exiting the service box assembly shall extend to an elevation approximately 12" below grade. The pre-installed poly rope shall extend a minimum of 3' inside the service box. The service box shall be placed on a 6" crushed rock base (compacted to 95% of ASTM D698) extending a minimum of 12" around the box perimeter. A 12" wide x 12" thick concrete border (COW concrete pavement mix) shall be placed flush around the top of the service box assembly.

Service Boxes shall be installed along the route of the waterline as listed in the Service Box Location table. The locations of the service boxes shown in the Service Box Location table are approximate. Maximum spacing for service boxes shall be 1,200 feet. The service boxes shall be placed along the outside limits of the waterline excavation except where such placement would fall within a paved or unpaved vehicular travelway. Service boxes shall be situated at least 5' outside of all vehicle travelways, and in locations as approved by the Field Engineer.

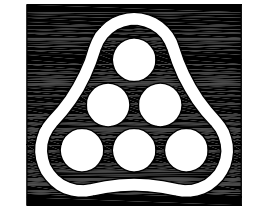
SERVICE BOX LOCATION TABLE		
APPROX. WATERLINE STATION	OFFSET	
WL No.1 0+56.00 *	8.5' RT.	
WL No.1 11+90.46	16' LT.	

(Approx. 1,220 L.F. conduit required.)

* CONTRACTOR SHALL OBTAIN ONE (1) QUAZITE COMPOSITE SERVICE BOX ASSEMBLY AT NO COST FROM DUNGLINGER AND SONS CONSTRUCTION COMPANY. CONTACT MR. MARK DOHRER AT (316) 945-0555 FOR COORDINATION AND DELIVERY.

- GENERAL NOTES NO. 24 THRU 32 HERE IN SHALL APPLY TO WATERLINE NO. 1, STA. 8+40.13 TO STA. 11+90.46, WHICH IS OUTSIDE THE LIMITS OF CONSTRUCTION FOR THE PAVING CONTRACTOR.
- THE CONTRACTOR SHALL GIVE ALL PROPERTY OWNERS AND/OR TENANTS OF DEVELOPED PROPERTY DIRECTLY ADJUTING THE CONSTRUCTION OF THIS PROJECT A MINIMUM OF TEN (10) DAYS ADVANCE NOTICE PRIOR TO START OF CONSTRUCTION.
- THE CONTRACTOR SHALL BE RESPONSIBLE FOR PRESERVING PROPERTY IRONS. THE CONTRACTOR SHALL BE REQUIRED TO RE-ESTABLISH ANY PROPERTY IRONS WHICH ARE DAMAGED OR DESTROYED BY HIS CONSTRUCTION OPERATIONS. SUCH IRONS SHALL BE RE-ESTABLISHED BY A LICENSED LAND SURVEYOR IN ACCORDANCE WITH STATE LAWS. ALL COSTS FOR THIS WORK SHALL BE SUBSIDIARY TO SITE RESTORATION.
- THE CONTRACTOR SHALL RESTORE ALL DITCHES, SWALES, ROAD SHOULDERS, ENTRANCES, AND BANK LINES TO THEIR ORIGINAL SLOPES AND GRADES EXCEPT AS SHOWN OTHERWISE.
- INTERURBAN TRAFFIC GENERATED OUTSIDE THE PROJECT AREA AND LOCAL BUSINESS OR RESIDENTIAL TRAFFIC GENERATED WITHIN THE PROJECT AREA ARE TO BE CARRIED THROUGH CONSTRUCTION AS FURTHER PROMULGATED BY PROJECT SPECIAL PROVISIONS. THE CONTRACTOR SHALL UTILIZE BARRICADES, SIGNS, GUARDS, AND FLAGMEN IN ACCORDANCE WITH THE MANUAL ON UNIFORM TRAFFIC CONTROL DEVICES.
- RUBBLE FROM THE REMOVAL OF MISCELLANEOUS STRUCTURES INCLUDING ANY TREES REMOVED AND TREE TRIMMINGS AND EXCESS EXCAVATED MATERIAL SHALL BE DISPOSED ON SITES PROVIDED BY THE CONTRACTOR. THESE SITES SHALL ALSO BE APPROVED OF BY THE ENGINEER AS TO SUITABILITY, APPEARANCE, AND SITE LOCATION. LOCATIONS THAT, IN THE OPINION OF THE ENGINEER, LEAVE AN UNSIGHTLY APPEARANCE WILL NOT BE APPROVED. ALL DISPOSAL SITES MUST BE APPROVED BY THE KANSAS DEPARTMENT OF HEALTH AND ENVIRONMENT. MATERIAL EITHER STOCKPILED OR DISPOSED OF IN A FLOOD PLAIN WILL REQUIRE A KANSAS STATE BOARD OF AGRICULTURE PERMIT. ANY MATERIAL DUMPED IN WATERS OF THE UNITED STATES OR WETLANDS IS SUBJECT TO U.S. CORPS OF ENGINEERS PERMITTING REGULATIONS. ANY MATERIAL BURIED OR STOCKPILED BEYOND APPROVED CONSTRUCTION LIMITS MAY REQUIRE ARCHAEOLOGICAL INVESTIGATIONS UNLESS BURIED IN A PREVIOUSLY APPROVED DISPOSAL LOCATION.
- TRAFFIC IS TO BE MAINTAINED AT ALL TIMES EXCEPT IN THE IMMEDIATE AREA OF CONSTRUCTION. IMMEDIATE AREA OF CONSTRUCTION IS DEFINED AS THE BLOCK IN WHICH TRENCHING AND PIPE LAYING IS OCCURRING. TRAFFIC IS TO BE MAINTAINED USING FLAG PERSONS AS NECESSARY. SIDE STREET INTERSECTIONS MAY BE CLOSED WHILE PIPE IS BEING LAID ACROSS THE INTERSECTION, HOWEVER, NO TWO CONSECUTIVE INTERSECTIONS CAN BE CLOSED AT THE SAME TIME. THE CONTRACTOR SHALL UTILIZE BARRICADES, SIGNS, GUARDS, AND FLAGMEN IN ACCORDANCE WITH THE MANUAL ON UNIFORM TRAFFIC CONTROL DEVICES.
- PAVEMENT REMOVAL AND/OR REPLACEMENT WILL BE MEASURED AND PAID FOR ON THE LINEAL FOOT BASIS AS MEASURED ALONG THE CENTERLINE OF THE WATER LINE REGARDLESS OF WIDTH, PAVEMENT TYPE AND/OR PAVEMENT THICKNESS. MINIMUM LIMITS OF SUCH PAVEMENT REMOVAL AND REPLACEMENT SHALL BE ONE FOOT BEYOND THE LIMITS OF THE EXCAVATION MADE FOR THE WATER LINE OR THE STRUCTURE, EXCEPT WHEN SUCH SAW CUTS ARE WITHIN THREE (3) FEET OF AN EXISTING JOINT THE LIMITS OF REMOVAL SHALL BE EXTENDED TO THE EXISTING JOINT. REMOVAL AND REPLACEMENT OF EXISTING PAVEMENT SHALL CONFORM TO THE APPLICABLE SECTIONS OF THE CITY OF WICHITA STANDARD SPECIFICATIONS.
- A SAW CUT OF AT LEAST ONE-HALF THE DEPTH OF EXISTING SURFACE COURSES OR ONE FOURTH THE DEPTH OF THE EXISTING TOP PAVEMENT THICKNESS SHALL BE PROVIDED AT LOCATIONS WHERE PROPOSED CONSTRUCTION ABUTS AN EXISTING SURFACE COURSE OR PAVEMENT FOR WHICH PARTIAL REMOVAL OF THAT SURFACE OR PAVEMENT IS REQUIRED. WHEN SUCH SAW CUTS ARE WITHIN THREE (3) FEET OF AN EXISTING JOINT THE LIMITS OF REMOVAL SHALL BE EXTENDED TO THE EXISTING JOINT. SUCH SAW CUTS WILL NOT BE PAID FOR DIRECTLY AND THIS COST SHALL BE CONSIDERED AS SUBSIDIARY TO THE REMOVAL OF THE SURFACE OR PAVEMENT. NO MORE THAN 1,000 FEET (3 BLOCKS) OF EXISTING PAVEMENT IS TO BE REMOVED WITHOUT PERMANENT PAVEMENT BEING REPLACED. THE CONTRACTOR SHALL PROVIDE TEMPORARY SURFACING MATERIALS AS REQUIRED TO MAINTAIN ACCESS TO BUSINESSES AND RESIDENCES. WHENEVER PAVEMENT REMOVAL EXCEEDS 500 FEET, THE CONTRACTOR WILL BE REQUIRED TO PLACE AND MAINTAIN A TEMPORARY DRIVING SURFACE UNTIL SUCH TIME AS PERMANENT PAVEMENT REPLACEMENT BEGINS. THE CONTRACTOR WILL BE REQUIRED TO INSURE THAT THE ELDERLY AND PHYSICALLY LIMITED PERSONS HAVE ADEQUATE ACCESS TO THEIR BUSINESSES AND RESIDENCES.
- CURB AND GUTTER REMOVAL AND REPLACEMENT SHALL BE SUBSIDIARY TO THE COST OF PAVEMENT REMOVAL AND REPLACEMENT.
- EROSION CONTROL (BMP'S) EROSION CONTROL MEASURES FOR THE PROJECT WILL BE PERFORMED BY THE PAVING CONTRACTORS. THE CONTRACTOR SHALL COORDINATE ALL ACTIVITIES WITH THE PAVING CONTRACTOR AND ENSURE THAT EROSION PROTECTION MEASURES ARE IN PLACE PRIOR TO EXCAVATION FOR INSTALLATION OF THE WATERLINE/SANITARY SEWER. SEE PAVING/SWD PLANS FOR ADDITIONAL INFORMATION.
- THE CONTRACTOR SHALL ADHERE TO ALL APPLICABLE REQUIREMENTS FOR NPDES STORM WATER POLLUTION PREVENTION PLAN AND KANSAS DEPARTMENT OF HEALTH AND ENVIRONMENT STORM WATER PERMIT. IF REQUESTED, THE CONTRACTOR SHALL SUBMIT A STORM WATER POLLUTION PREVENTION PLAN TO THE CITY OF WICHITA, STORM WATER MANAGEMENT OFFICE PRIOR TO CONSTRUCTION.
- EXISTING DRAINAGE AND OTHER UTILITIES SHOWN TO BE ABANDONED BY THE PAVING CONTRACTOR SHALL BE REMOVED AS REQUIRED FOR CONSTRUCTION OF THE PROPOSED IMPROVEMENTS. ALL ITEMS REMOVED SHALL BE COORDINATED WITH THE PAVING CONTRACTOR TO ENSURE THAT DRAINAGE IS BEING MAINTAINED THROUGHOUT THE PROJECT. ALL WORK ASSOCIATED WITH THIS ITEM SHALL BE INCLUDED IN THE LUMP SUM BID ITEM "SITE CLEARING".
- THE CONTRACTOR SHALL AIR TEST AND MANDEREL ALL NEWLY CONSTRUCTED SANITARY SEWERS PRIOR TO ACCEPTANCE OF THE PROJECT, IN ACCORDANCE WITH THE CITY OF WICHITA STANDARD SPECIFICATIONS.

NOTE: WATERLINE VALVES TO BE OPERATED BY CONTRACTOR ONLY IF WATER DEPARTMENT REPRESENTATIVE IS ON SITE.



No.	Revision	By	Date
SOUTHEAST 48" WATERLINE - PHASE 1C WASHINGTON/WATERMAN TO LEWIS/IDA WATERLINE KEY MAP AND GENERAL NOTES JAMES L. ARMOUR, P.E. - CITY ENGINEER CITY OF WICHITA PROJECT NO. 448-90417 Professional Engineering Consultants, P.A. 303 S. TOPKA • WICHITA, KANSAS 67202 316-262-2691 • FAX 316-262-3003			
Designed by	MDK, EJB	Job No.	35-05787-001-42
Drawn by	CSL, RMT	Date	March 2006
			Sht. W2 of 23

Scaled 12'-31'-2008 3:42:32 PM by RW
 Plot Scale 1:100 01-02-2008 9:32:41 AM by MAC
 Q:\2008\05787\001\Phase C\05787-001-Phase C-WLKeymap