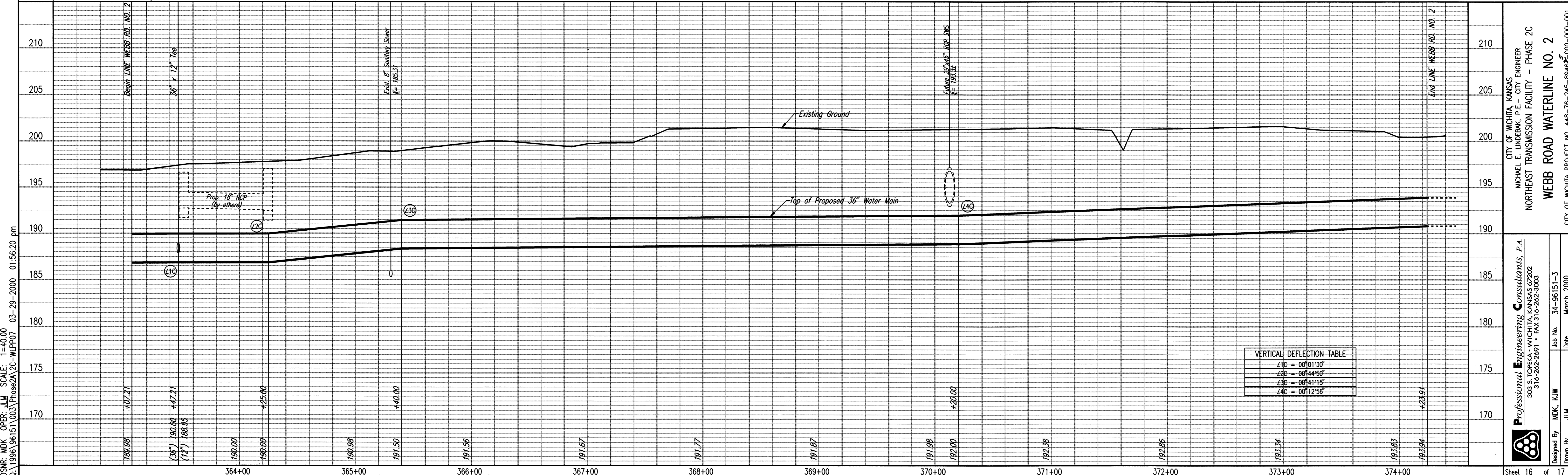
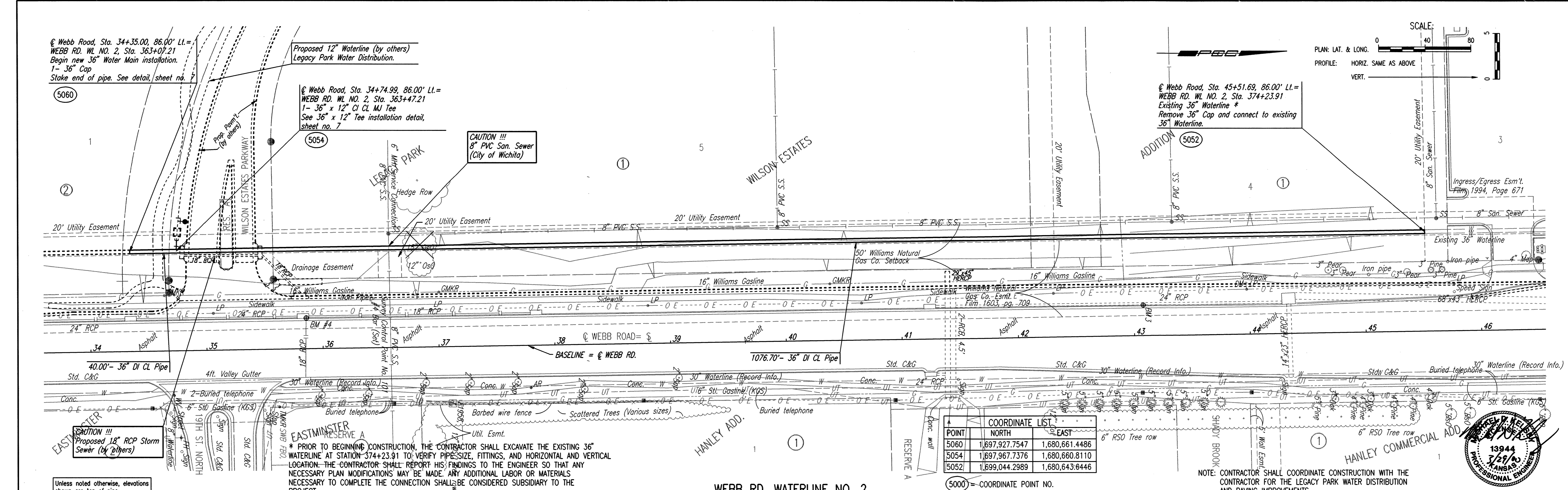


DATE	
BY	
CHECKED	
CHECKED	
PLAN	

DATE	
BY	
CHECKED	
CHECKED	
PROFILE	



DSNR, MDK OPER: JLM SCALE: 1"=40.00  
 Q:\1996\96151\003\Phase2A\2C-WLPP07 03-29-2000 01:56:20 pm

Professional Engineering Consultants, P.A.  
 303 S. TOPEKA - WICHITA, KANSAS 67202  
 316-262-2691 • FAX 316-262-3003

City of Wichita, Kansas  
 Michael E. Lindbak, P.E. - City Engineer  
 Northeast Transmission Facility - Phase 2C  
**WEBB ROAD WATERLINE NO. 2**  
 City of Wichita, Project No. 448-76-245-8948-000-000-001

Designed By: MDK, KIW  
 Drawn By: JLM  
 Job No.: 34-96151-3  
 Date: March 2000