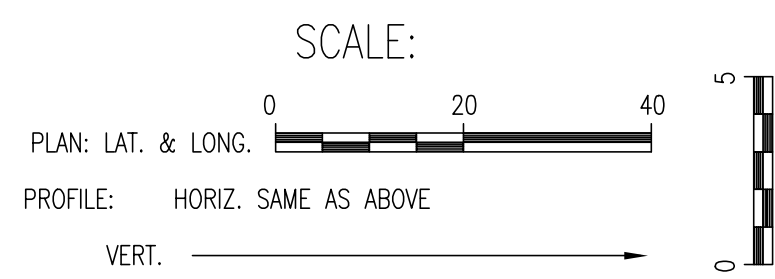
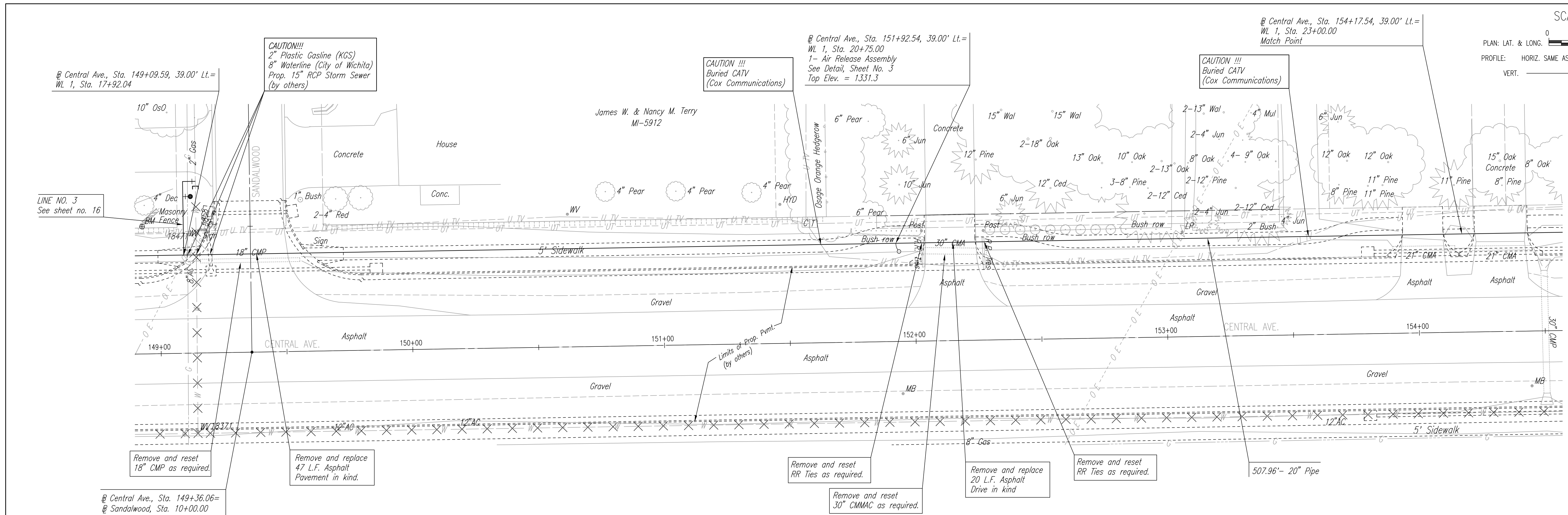


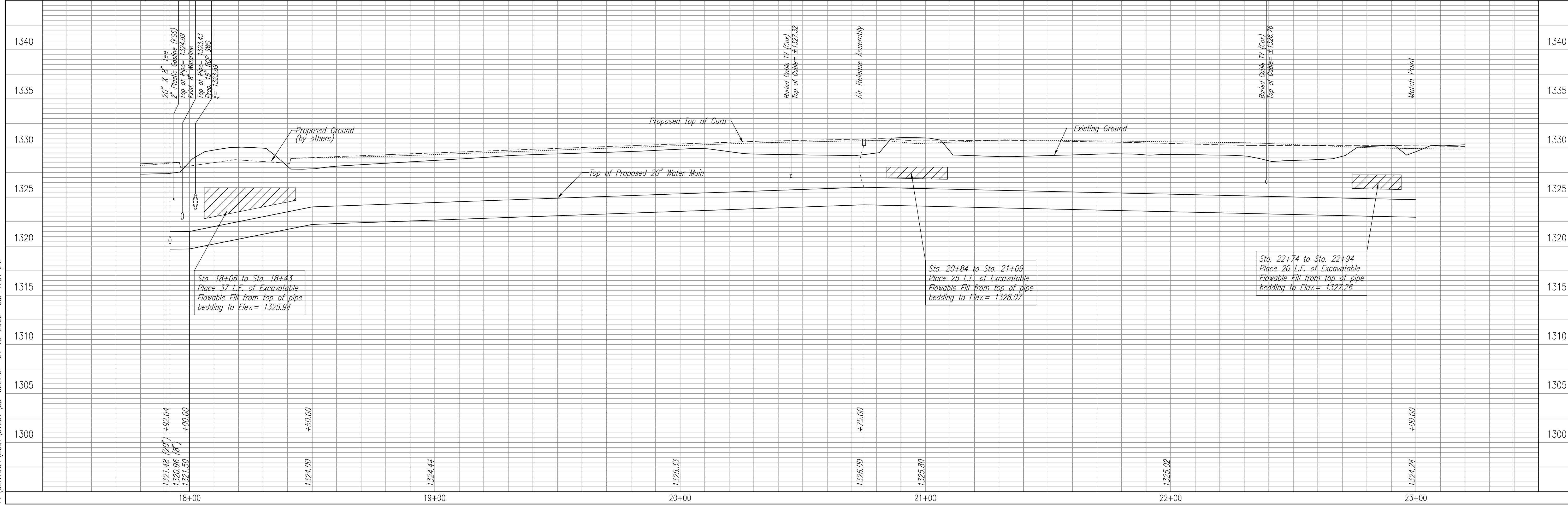
PLAN	CHECKED	CHECKED
BY		
DATE		

PROFILE	CHECKED	CHECKED
BY		
DATE		

DSNR: MDK OPER. DAW SCALE: 1"=20.00
 F:\SENTOUT\2001\01257\09-WLine1 01-15-2002 03:47:31 pm



WATERLINE NO. 1



Unless noted otherwise, elevations shown are top of pipe

× - Denotes Waterline to be Abandoned.

CITY OF WICHITA, KANSAS
 MICHELLE UNDERBAK, P.E. - CITY ENGINEER
 20" WATERLINE IMPROVEMENTS IN CENTRAL
 143RD STREET EAST TO 159TH STREET EAST

Professional Engineering Consultants, P.A.
 303 S. TOPEKA • WICHITA, KANSAS 67202
 316-262-2691 • FAX 316-262-3003

Job No. 34-01257-042 Date June 2001
 Drawn By MDK Date
 DAW

Sheet 9 of 27

