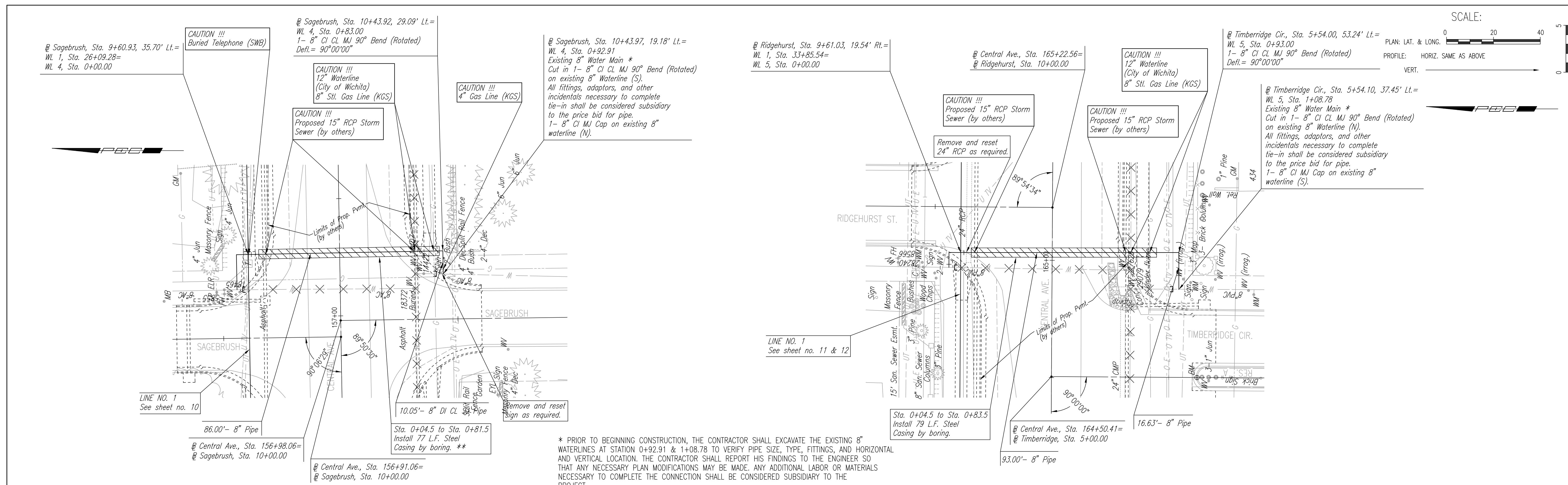


PLAN	CHECKED	CHECKED
BY		
DATE		

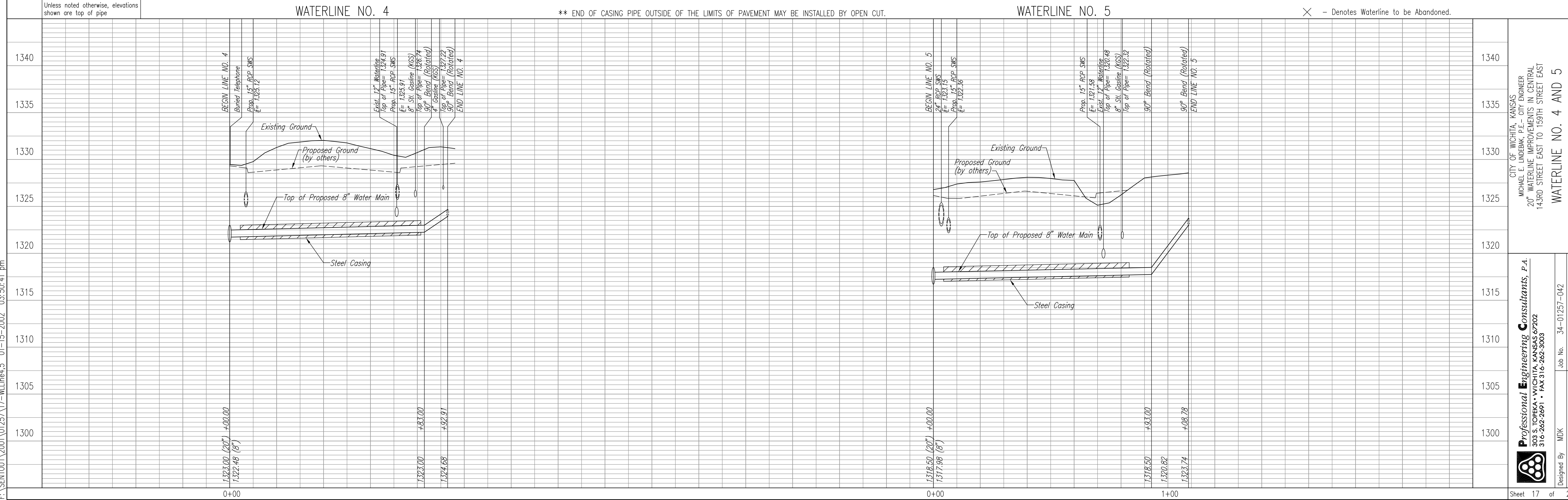
PROFILE	CHECKED	CHECKED
BY		
DATE		

DSNR: MDK OPER: DAW SCALE: 1"=20.00
 F:\SENTINEL\2001\0725\17-WLine4,5 01-15-2002 03:50:41 pm

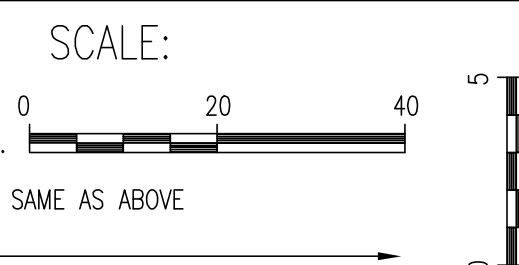
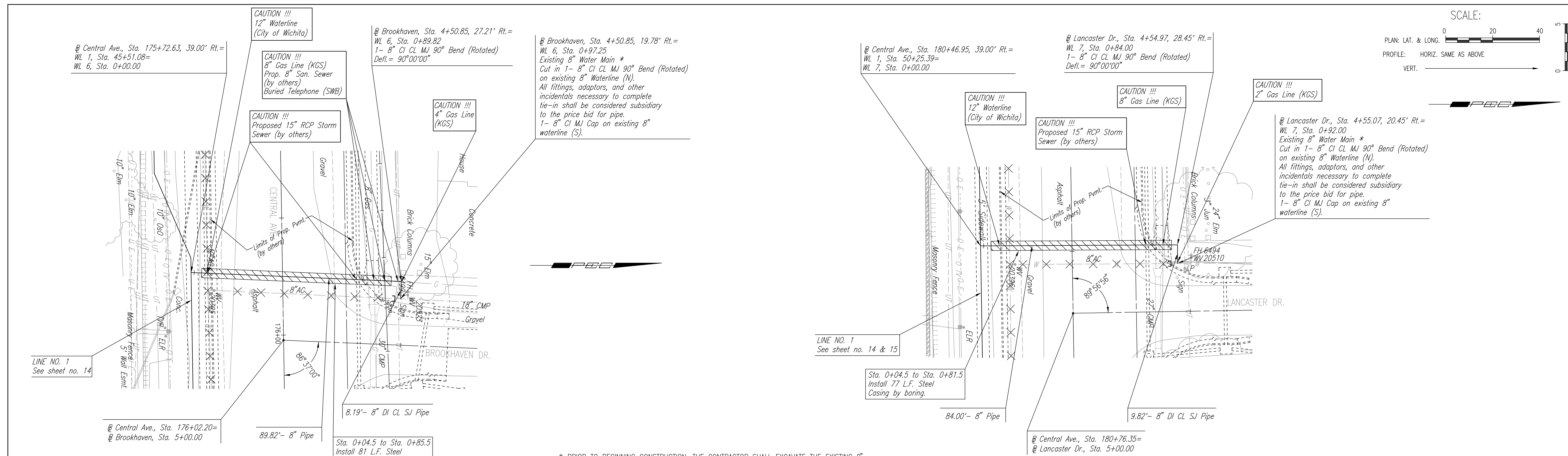


* PRIOR TO BEGINNING CONSTRUCTION, THE CONTRACTOR SHALL EXCAVATE THE EXISTING 8" WATERLINES AT STATION 0+92.91 & 1+08.78 TO VERIFY PIPE SIZE, TYPE, FITTINGS, AND HORIZONTAL AND VERTICAL LOCATION. THE CONTRACTOR SHALL REPORT HIS FINDINGS TO THE ENGINEER SO THAT ANY NECESSARY PLAN MODIFICATIONS MAY BE MADE. ANY ADDITIONAL LABOR OR MATERIALS NECESSARY TO COMPLETE THE CONNECTION SHALL BE CONSIDERED SUBSIDIARY TO THE PROJECT.

** END OF CASING PIPE OUTSIDE OF THE LIMITS OF PAVEMENT MAY BE INSTALLED BY OPEN CUT.



DATE	
BY	
CHECKED	CHECKED
PLAN	



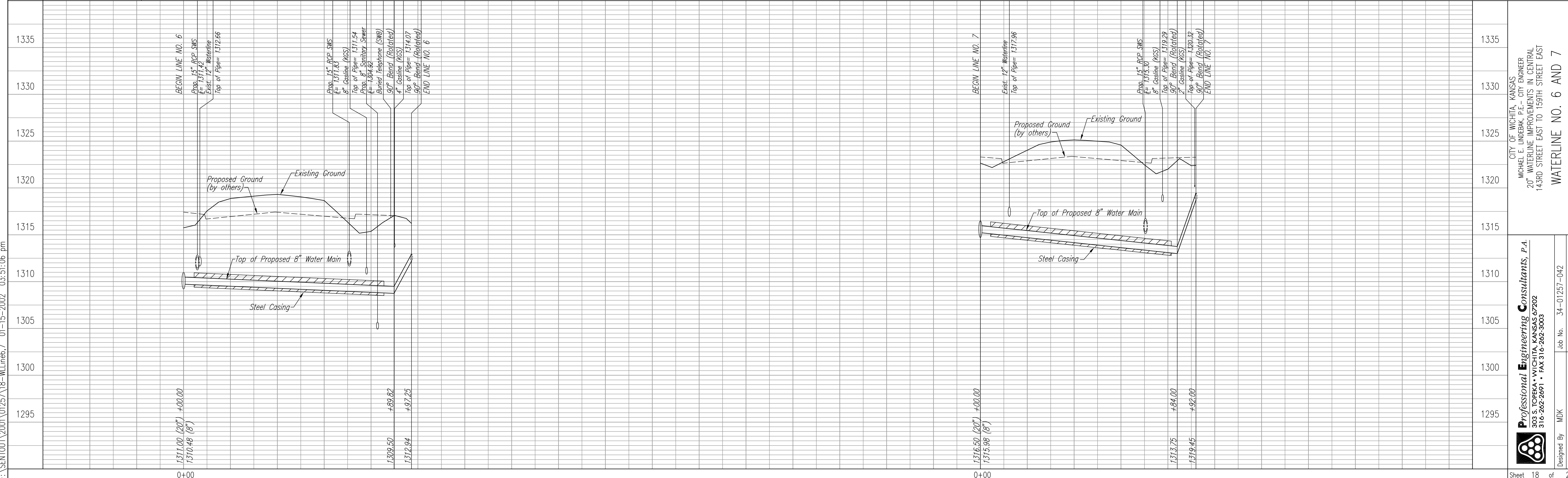
DATE	
BY	
CHECKED	CHECKED
PROFILE	

Unless noted otherwise, elevations shown are top of pipe

WATERLINE NO. 6

WATERLINE NO. 7

✕ - Denotes Waterline to be Abandoned.



DSNR: MDK OPER: DAW SCALE: 1"=20.00
F:\SENTOUT\2001\0125718-WLine6,7 01-15-2002 03:51:06 pm

CITY OF WICHITA, KANSAS
MICHAEL E. LINDBERGH, P.E. - CITY ENGINEER
20" WATERLINE IMPROVEMENTS IN CENTRAL
143RD STREET EAST TO 159TH STREET EAST
WATERLINE NO. 6 AND 7
CITY OF WICHITA PROJECT NO. 448-89551

Professional Engineering Consultants, P.A.
303 S. TOPEKA • WICHITA, KANSAS 67202
316-262-2691 • FAX 316-262-3003

Designed By MDK
Drawn By DAW
Job No. 34-01257-042
Date June 2001

Sheet 18 of 27