

AS BUILT PLANS

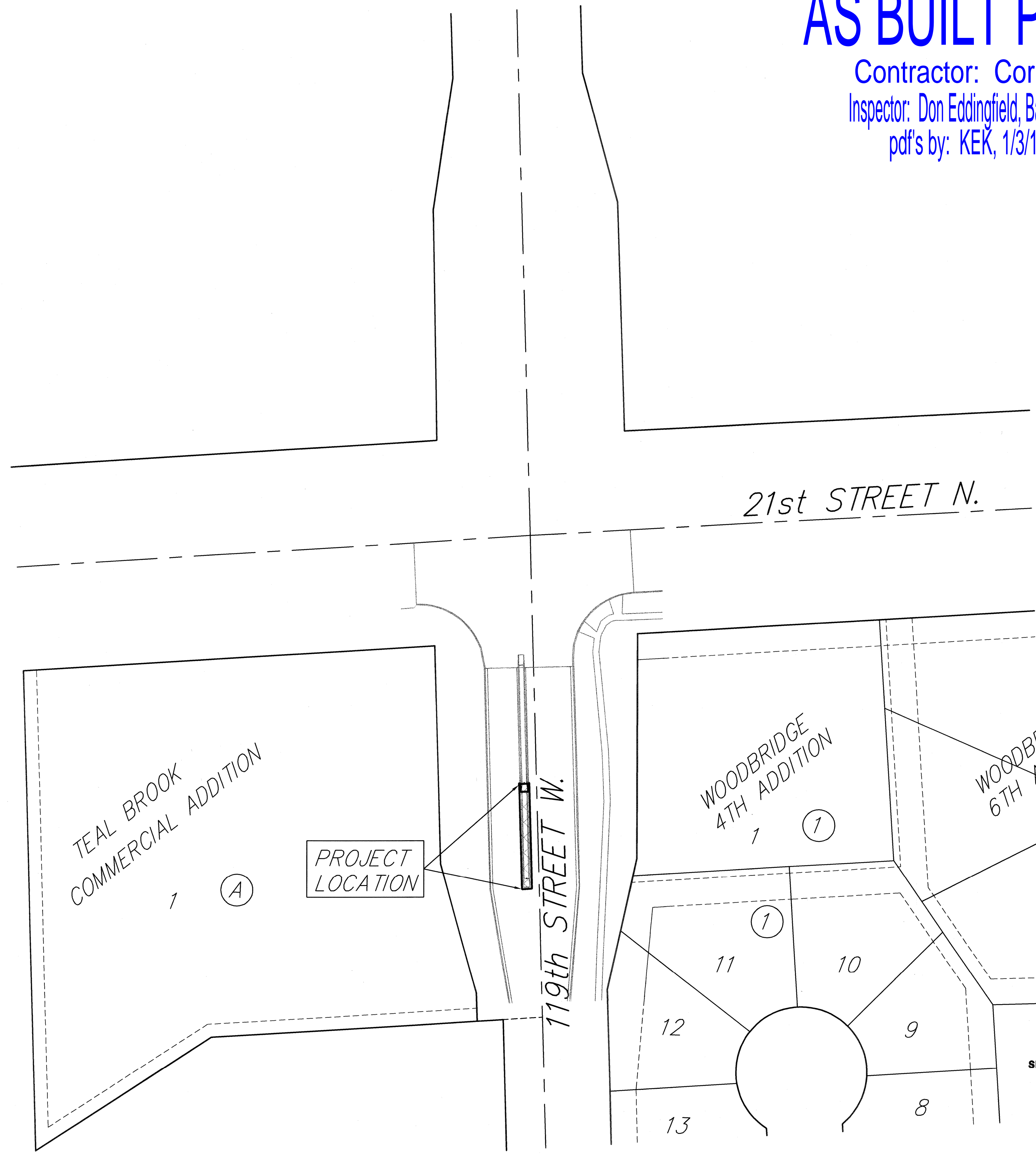
Contractor: Cornejo
 Inspector: Don Eddingfield, Baughman Co
 pdf's by: KEK, 1/3/11

Median Removal for 119th STREET W.
 to serve

WOODBIDGE 4TH ADDITION

CITY OF WICHITA, KANSAS

James L. Armour, P.E. City Engineer
 Project Number
 204-PPP
 O.C.A. Number
 607879



21st STREET N.

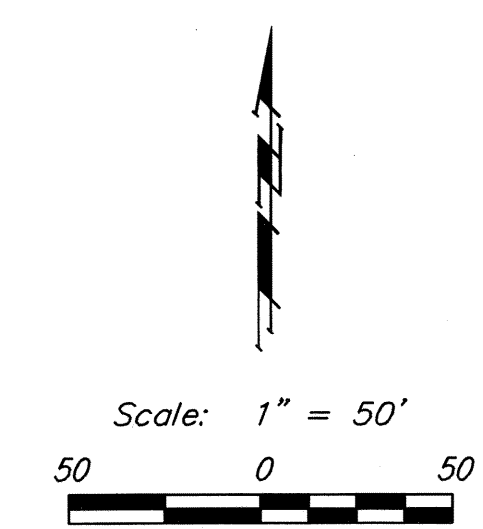
119th STREET W.

TEAL BROOK
 COMMERCIAL ADDITION

WOODBIDGE
 4TH ADDITION

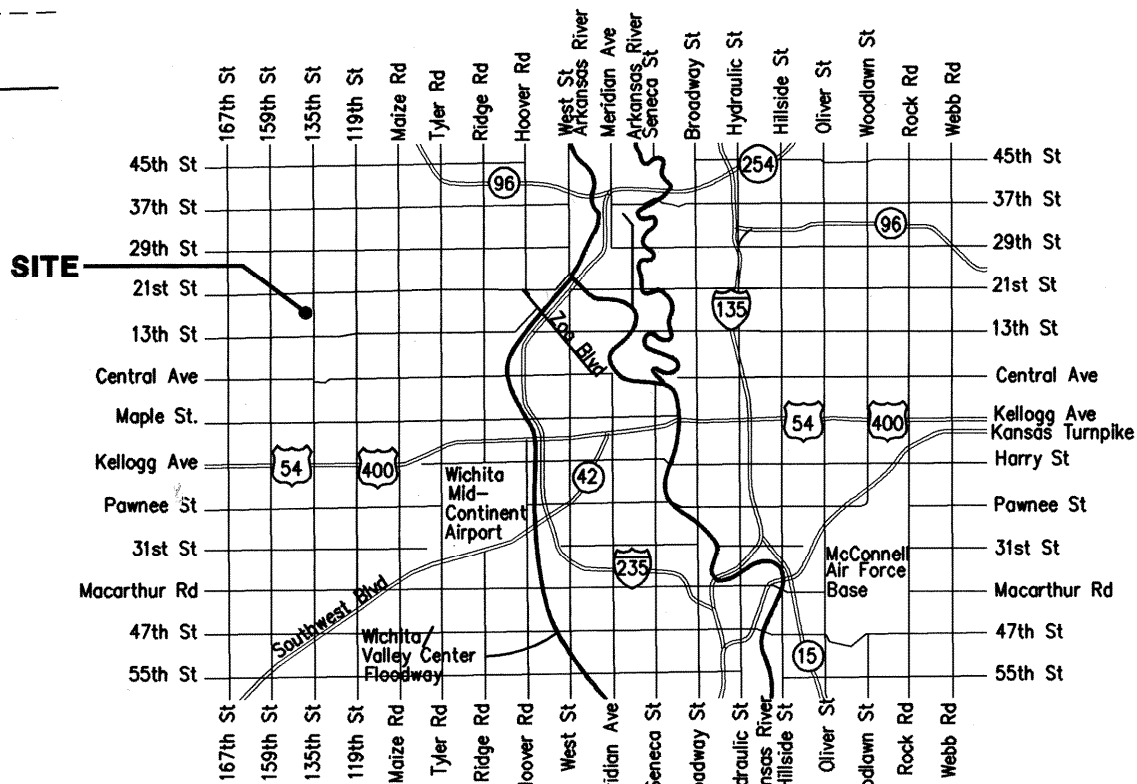
WOODBIDGE
 6TH ADDITION

PROJECT
 LOCATION



Sheet Index

Title Sheet	1
119th Street	2



Vicinity Map

Benchmarks

BM #1: Cross cut in north edge of concrete walk, approximately 315' east and 75' north of the NW Corner. NW 1/4 Sec. 7, T27S, R1W of the 6th P.M.
 Elev. = 1357.63 NGVD29

BM #2: Orange cap Baughman rebar approximately 4.3' west and 93' south of the NW Corner of NW 1/4 Sec. 7, T27S, R1W of the 6th P.M.
 Elev. = 1359.66 NGVD29

GENERAL NOTES:

- Contractor will be required to provide notice to utility companies a minimum of forty-eight (48) hours prior to any excavation, as follows:
 Kansas One-Call 687-2470
 The Contractor must notify the following in case of an emergency:
 Cox Communications 262-4270
 Kansas Gas Service 1-888-482-4950
 Westar Energy 383-8650
 Aquila Energy 1-800-303-0357
 SBC 268-2245
 City of Wichita Water Dept. 268-4563
 City of Wichita Sewer Maint. 268-4024
 City of Wichita Storm Sewer Maint. 268-4090
 City of Wichita Traffic Maint. 268-4034
 Conoco Phillips Pipeline 1-877-267-2290
 Southern Star Pipeline 529-6600
 Kinder Morgan Pipeline 1-888-844-3658
 Enbridge Pipeline 1-800-323-6241
- Utility service lines, poles, valve boxes, meters, and etcetera are to be adjusted as necessary by others prior to construction unless the plans specifically call for their adjustment by the Contractor or unless the plans specifically identify a utility to be adjusted by its owner during construction. Existing utilities and their location, as shown on the plans, represent the best information obtainable for design. The Contractor will be required to work around existing utilities within the right-of-way which do not conflict with proposed construction.
- Rubble from the removal of miscellaneous structures and excess excavation which is to be wasted shall be disposed of on sites to be provided by the Contractor. These sites shall be approved by the Engineer as to suitability, appearance and site location. Locations, in the opinion of the Engineer, that will leave an unsightly appearance will not be approved. All disposal sites must be approved by the Kansas Department of Health and Environment. Material either stockpiled or disposed of in a flood plain would require a Kansas State Board of Agriculture permit. Any material dumped in waters of the United States or wetlands is subject to U.S. Corps of Engineers permitting regulations. Any material buried or stockpiled beyond approved construction limits would require additional archaeological investigations unless buried in a previously approved borrow location.
- A saw cut of at least one-half the depth of existing surface courses or one-fourth the depth of the existing total pavement thickness shall be provided at locations where proposed construction abuts the existing surface course or pavement for which partial removal of that surface or pavement is required. Sawed joint to facilitate removal within three (3) feet of existing joints will not be permitted and for such instances the limits of removal shall extend to the existing joint. Such saw cuts will not be paid for directly and this cost shall be considered as subsidiary to the removal of the surface or pavement.

APPROVED AS NOTED
 BY CITY ENGINEER OF WICHITA

Street Paving *Julianne Kallman 4-1-10*

NOTE TO CONTRACTORS

Inspection and testing for this project is to be provided by a Licensed Consulting Engineering Firm under contract with the Owner/Developer. Said inspection to be in accordance with the City of Wichita standard construction engineering practices and certified by a Licensed Professional Engineer. No work shall be performed in dedicated easements or public right-of-way by the Contractor without such inspection nor shall any work be commenced without written authorization by the City Engineer. All Construction and Materials shall comply with the City of Wichita Specifications and Standards (on file and available in the City Engineer's Office).



Baughman Company, P.A. 315 Ellis St. Wichita, KS 67211 P 316-262-7271 F 316-262-0149
 ENGINEERING | SURVEYING | PLANNING | LANDSCAPE ARCHITECTURE