

# AS BUILT PLANS

Contractor: Ewertz Excavating  
 Inspector: Don Eddingfield, Baughman Co.  
 pdf's by: KEK, 12/30/10

# STORM WATER SEWER IMPROVEMENTS to serve **RIDGE 400 ADDITION**

CITY OF WICHITA, KANSAS

James L. Armour, P.E. City Engineer  
 Private Project Number: 2065 PPS (607861)

AUGUST 2010

## GENERAL NOTES:

1. Contractor will be required to provide notice to utility companies a minimum of seventy-two (72) hours prior to any excavation, as follows:

Kansas One-Call 687-2470

The Contractor must notify the following in case of an emergency:

Cox Communications 262-4270  
 Kansas Gas Service 1-888-482-4950  
 Westar Energy 383-8650  
 Black Hills Energy 1-800-303-0357  
 AT&T 268-2245  
 City of Wichita Water Dept. 268-4563  
 City of Wichita Sewer Maint. 268-4024  
 City of Wichita Storm Sewer Maint. 268-4090  
 City of Wichita Traffic Maint. 268-4034  
 Conoco Phillips Pipeline Co. 1-877-267-2290  
 Southern Star Pipeline Co. 529-6600  
 Kinder-Morgan Pipeline Co. 1-888-844-5658

2. Utility service lines, poles, valve boxes, meters, and etcetera are to be adjusted as necessary by others prior to construction unless the plans specifically call for their adjustment by the Contractor or unless the plans specifically identify a utility to be adjusted by its owner during construction. Existing utilities and their location, as shown on the plans, represent the best information obtainable for design. The Contractor will be required to work around existing utilities within the right-of-way which do not conflict with proposed construction.

3. Rubble from the removal of miscellaneous structures and excess excavation which is to be wasted shall be disposed of on sites to be provided by the Contractor. These sites shall be approved by the Engineer as to suitability, appearance and site location. Locations, in the opinion of the Engineer, that will leave an unsightly appearance will not be approved. All disposal sites must be approved by the Kansas Department of Health and Environment. Material either stockpiled or disposed of in a flood plain would require a Kansas State Board of Agriculture permit. Any material dumped in waters of the United States or wetlands is subject to U.S. Corps of Engineers permitting regulations. Any material buried or stockpiled beyond approved construction limits would require additional archaeological investigations unless buried in a previously approved borrow location.

4. All disturbed R/W areas not intended for pavement or sidewalk construction shall be seeded with Kansas Premium Fescue Blend at a rate of 8 lb./1000 Sq. Ft., fertilized with a 16-20-6 ratio at a rate of 4 lb./1000 Sq. Ft., and mulched with Prairie Hay at a rate of 92 lb./1000 Sq. Ft. Mulch shall be "patted" with forks or punched into soil to reduce loss due to wind.

5. The Contractor shall give all property owners and/or tenants of developed property abutting the construction of this project a minimum of two (2) days notice prior to start of construction.

6. Contractor shall furnish the inspector with a copy of the manufacturer's certification for any pipe used on this project after completion of pipe installation. The engineer will not certify the project to the city until pipe certification has been received.

7. All storm water sewer lines and appurtenances shall be installed in accordance with the most recent edition of City of Wichita, Kansas Standard Specifications for the Construction of City Projects.

8. Contractor shall not start work on the project until the project inspector is assigned to the project and is present on the site. Contractor shall not start on the project until all necessary bonds and permits have been obtained. Bonds may include but are not limited to Statutory, Performance & Maintenance for areas in public right-of-way and easement. For projects within the City of Wichita contact Tom Mason (268-4574). Any work done without inspection will be required to be uncovered for inspection.

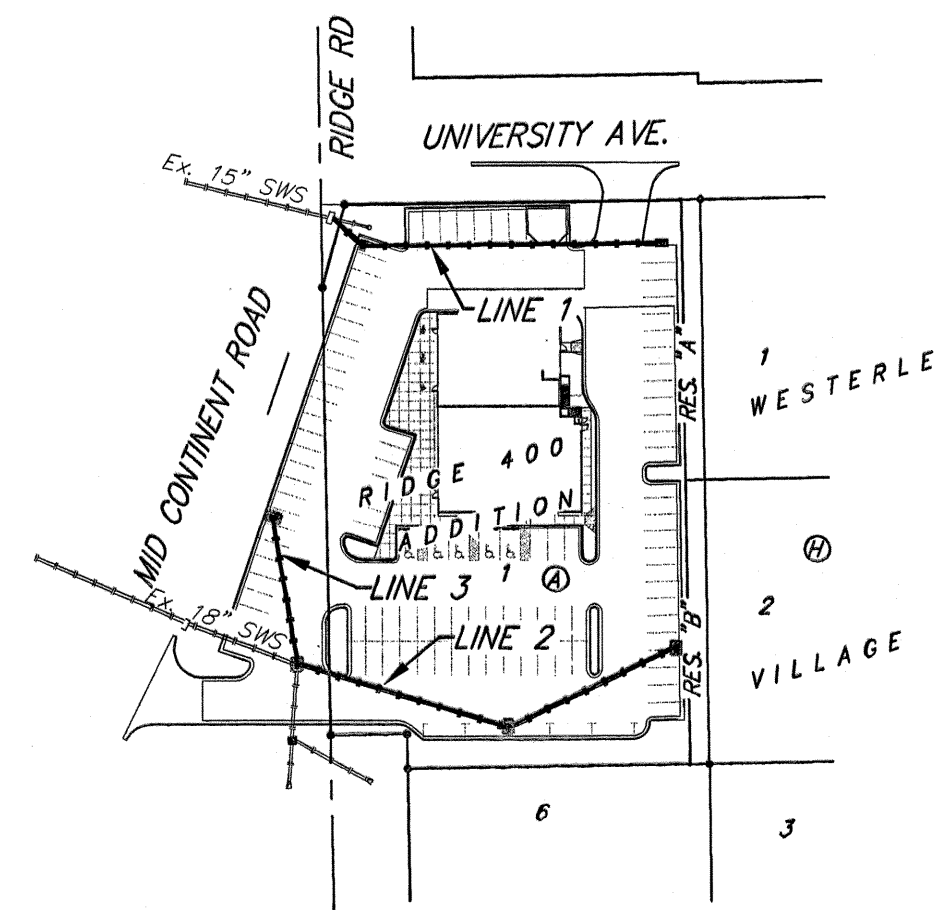
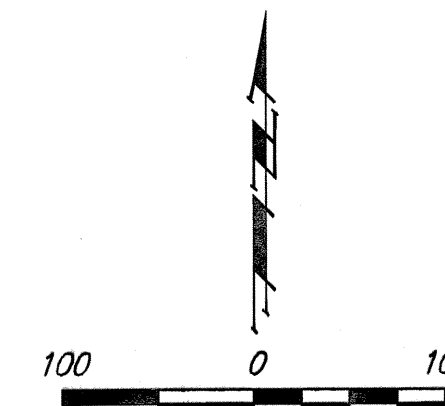
## Benchmarks

"□" Cut in the east end of the southeast curb return at the intersection of Mid-Continent Rd. & University in Wichita, Sedgwick County, KS.  
 Elevation = 1324.08 NGVD29

The northeast corner of brick sign base 330' north of Taft Ave. along the CL of S. Ridge Rd. and 84' west of the CL of Ridge Rd. in Wichita, Sedgwick County, Kansas.  
 Elevation = 1327.11 NGVD29

## Sheet Index

Title Sheet	1
Plan/Profile Sheet	2
Plan/Profile Sheet	3
Copy of Plat	4
Standard Drop Inlet Detail	Available On Request
Standard Single Curb Inlet Detail	Available On Request
Erosion Control Plan & BMP Details	Available On Request

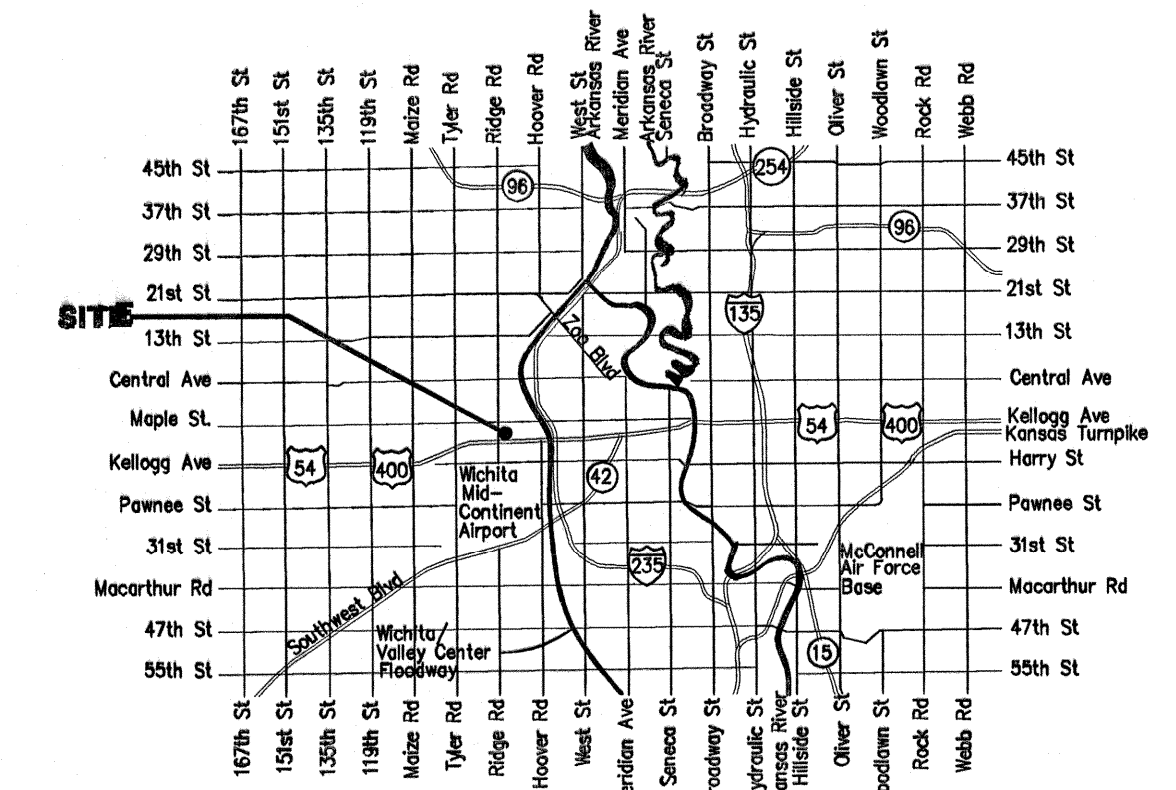
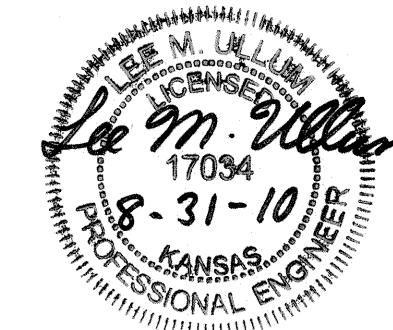


APPROVED AS NOTED  
 BY CITY ENGINEER OF WICHITA

Storm Sewers *Julian Kallman* 8-31-10

NOTE TO CONTRACTORS

Installation, inspection and testing for this project is to be provided by a Licensed Consulting Engineering Firm under contract with the Owner/Developer. Said inspection to be in accordance with the City of Wichita standard construction engineering practices and certified by a Licensed Professional Engineer. No work shall be performed in dedicated easements or public right-of-way by the Contractor without such inspection nor shall any work be commenced without written authorization by the City Engineer. All Construction and Materials shall comply with the City of Wichita Specifications and Standards (on file and available in the City Engineer's Office).



## Vicinity Map



Baughman Company, P.A. 315 Ellis St. Wichita, KS 67211 P 316-262-7271 F 316-262-0149  
 ENGINEERING | SURVEYING | PLANNING | LANDSCAPE ARCHITECTURE