

BENCH MARKS

"□" Cut in the east end of the southeast curb return at the intersection of Mid-Continent Rd. & University in Wichita, Sedgwick County, KS.
Elevation = 1324.08 NGVD29

The northeast corner of brick sign base 330' north of Taft Ave. along the CL of S. Ridge Rd. and 84' west of the CL of Ridge Rd. in Wichita, Sedgwick County, Kansas.
Elevation = 1327.11 NGVD29

Contractor Shall Follow All Applicable Best Management Practices (BMP) For Erosion Control.

Contractor To Use Extreme Caution When Excavating Near Utility Lines. Contractor To Hand Dig To Expose All Utility Lines Prior To Construction. Verify Depth To Determine Conflict If Any.

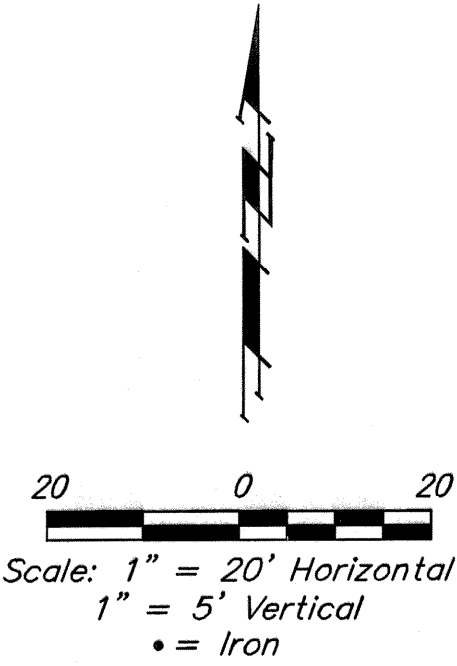
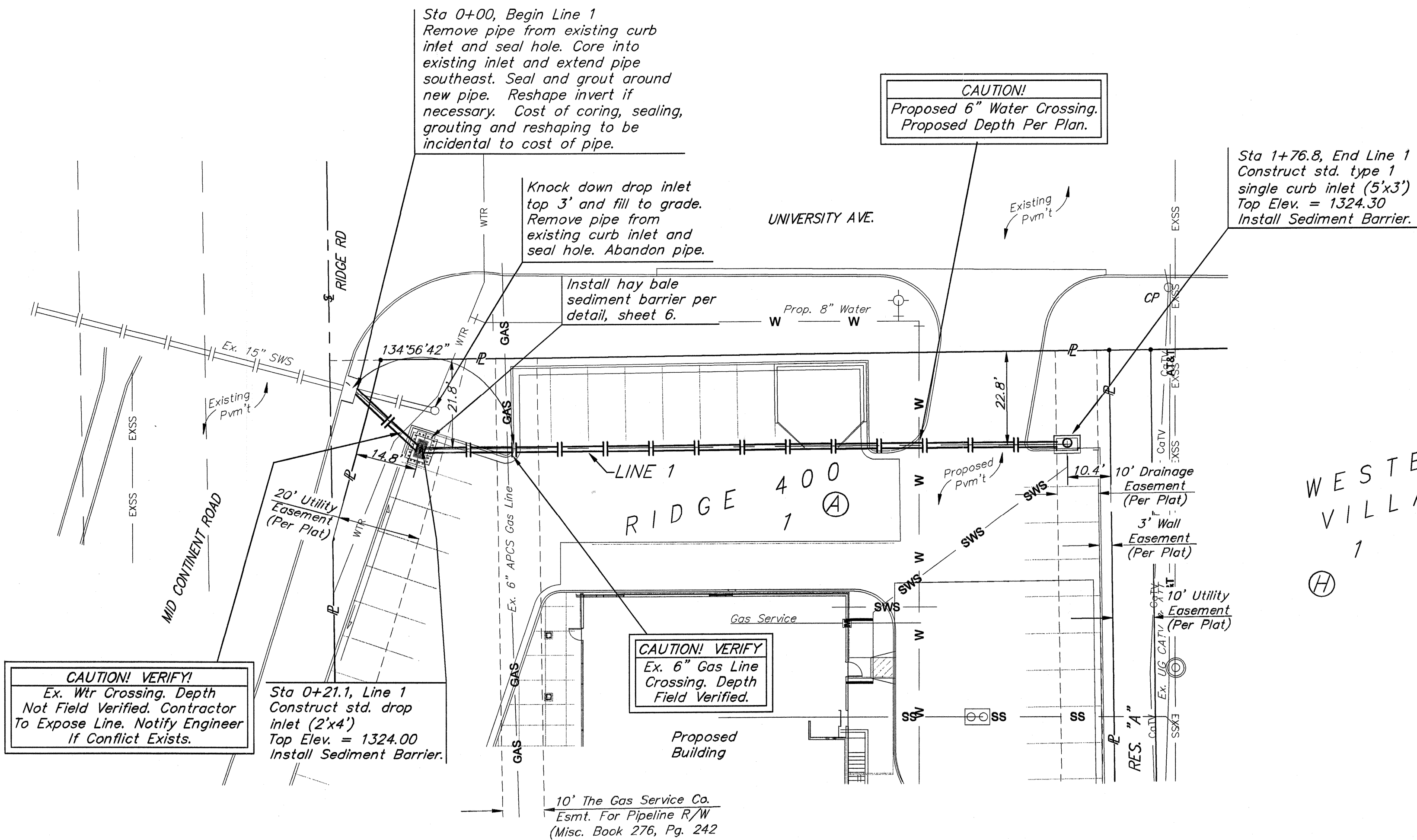
CAUTION! VERIFY!
Ex. Wtr Crossing. Depth Not Field Verified. Contractor To Expose Line. Notify Engineer If Conflict Exists.

Sta 0+21.1, Line 1
Construct std. drop inlet (2'x4')
Top Elev. = 1324.00
Install Sediment Barrier.

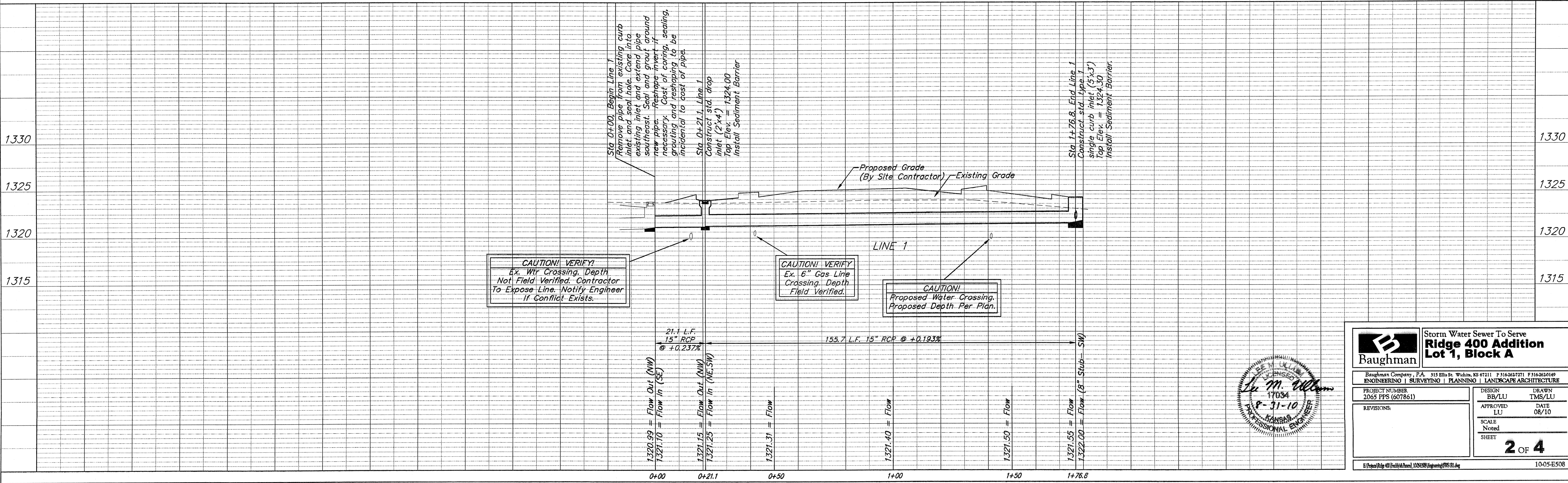
CAUTION! VERIFY!
Ex. 6" Gas Line Crossing. Depth Field Verified.

CAUTION!
Proposed 6" Water Crossing.
Proposed Depth Per Plan.

Sta 1+76.8, End Line 1
Construct std. type 1 single curb inlet (5'x3')
Top Elev. = 1324.30
Install Sediment Barrier.



WESTERLEA VILLAGE
1
(H)



		Storm Water Sewer To Serve Ridge 400 Addition Lot 1, Block A	
<small>Baughman Company, P.A. 315 Bill St. Wichita, KS 67211 F 316262771 F 316262149 ENGINEERING SURVEYING PLANNING LANDSCAPE ARCHITECTURE</small>			
PROJECT NUMBER 2065 PPS (607861)	DESIGN BB/LU	DRAWN TMS/LU	APPROVED LU
REVISIONS:	SCALE Noted	DATE 08/10	SHEET 2 OF 4
			E:\p\p\Ridge 400\Drawings\DWG\StormWater\SSW.Dwg