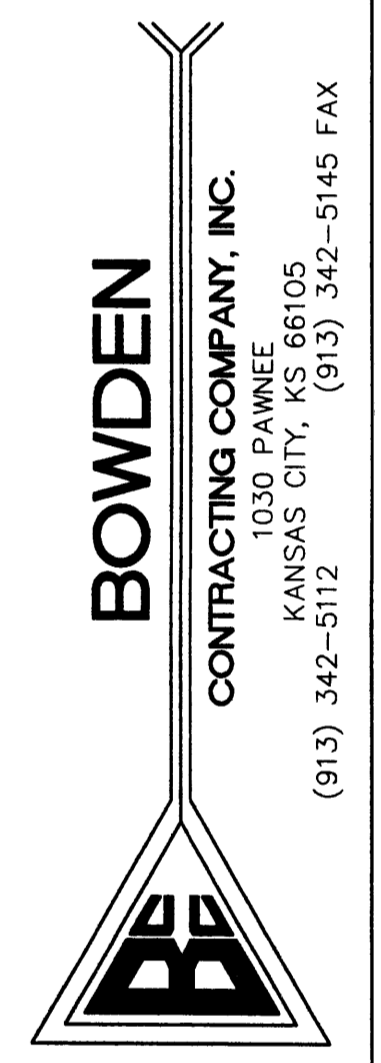
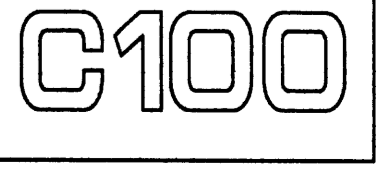


LAMPEN ENGINEERING, INC.
 1512 NW MOCK AVENUE, SUITE B
 BLUE SPRINGS, MISSOURI 64015
 (816) 220-0246



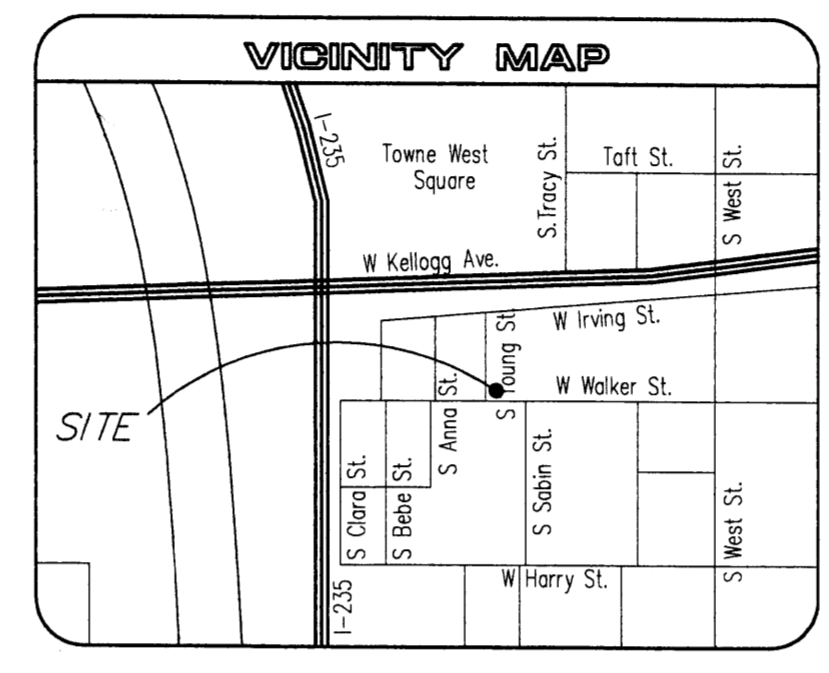
**PROPOSED PARKING LOT FOR:
 SYSCO
 NE CORNER WALKER AND YOUNG
 WICHITA, SEDGWICK COUNTY, KANSAS**

DATE: 9-30-09
 REVISED:
 PROJECT # 09-08-003



**PRIVATE STORM WATER SEWER EXTENSION
 TO SERVE
 CHANGE INDUSTRIAL PARK 2nd ADDITION
 1999 PPS (607861)
 CITY OF WICHITA, KANSAS
 JAMES L. ARMOUR, P.E. - City Engineer**

PROJECT NOT INSPECTED BY A CONSULTING FIRM. APPEARS TO HAVE BEEN INSTALLED AS PLANNED.



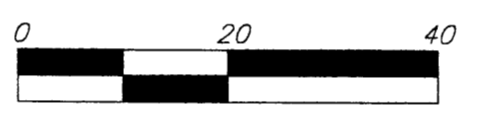
STORM SEWERS *Julian Kallman 10-1-09*
 NOTE TO CONTRACTOR
 INSPECTION AND TESTING FOR THIS PROJECT IS TO BE PROVIDED BY A LICENSED CONSULTING ENGINEERING FIRM CONTRACTED BY THE OWNER/DEVELOPER. SAID INSPECTION TO BE IN ACCORDANCE WITH THE CITY OF WICHITA STANDARD CONSTRUCTION ENGINEERING PRACTICES AND CERTIFIED BY A LICENSED PROFESSIONAL ENGINEER. NO WORK SHALL BE PERFORMED IN DEDICATED EASEMENTS OR PUBLIC RIGHT-OF-WAY BY THE CONTRACTOR UNTIL SUCH INSPECTION IS ARRANGED FOR AND REQUIRED BONDS HAVE BEEN SUBMITTED TO AND APPROVED BY THE CITY NOR SHALL ANY WORK BE COMMENCED IN DEDICATED EASEMENTS OR PUBLIC RIGHT-OF-WAY WITHOUT WRITTEN AUTHORIZATION BY THE CITY ENGINEER. IMPROVEMENTS PERFORMED UNDER THIS PROJECT SHALL NOT BE ACCEPTED BY THE CITY UNTIL ALL APPLICABLE DOCUMENTATION HAS BEEN SUBMITTED TO THE CITY ENGINEER. THIS MAY INCLUDE: RECORD DRAWINGS, INSPECTION LOGS, TEST DOCUMENTATION, TV TAPES, AND A CERTIFICATE OF COMPLETION. THE ABOVE SHALL BE PERFORMED BY THE CONSULTING FIRM CONTRACTED TO INSPECT THIS PROJECT.

LEGAL DESCRIPTION

Lot 3, Chance Industrial Park 2nd Addition, Wichita, Kansas, Sedgwick County, Kansas, EXCEPT the east 395 feet thereof.
 Subject property contains 68,143.7 Square Feet, or 1.564 Acres.

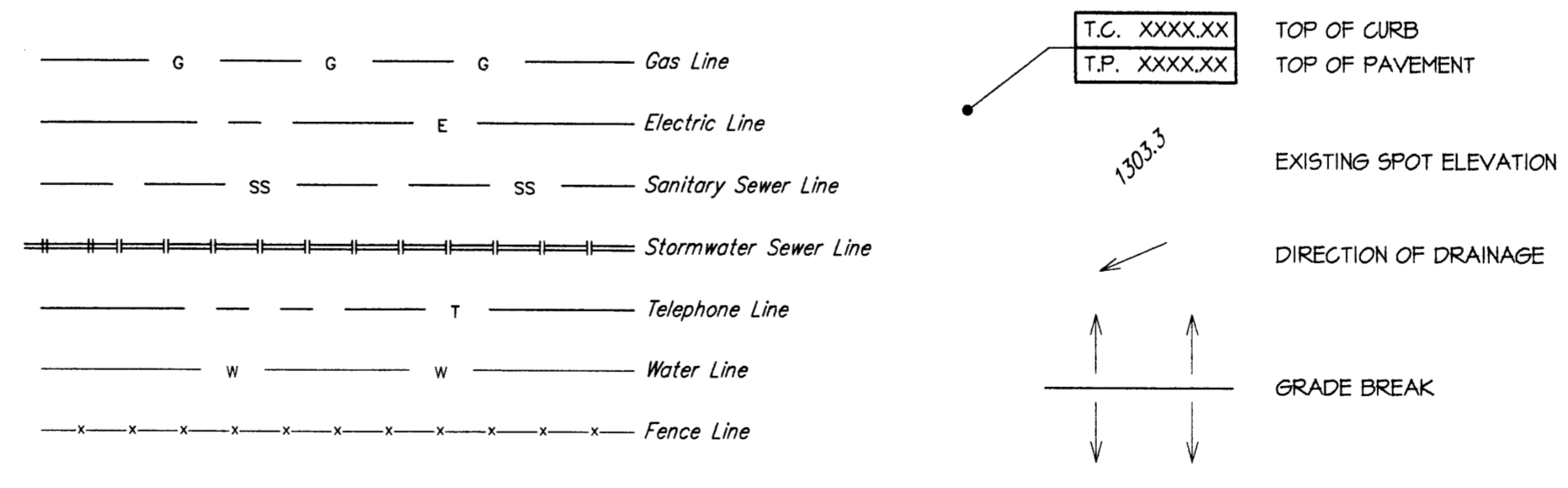
UTILITY OPERATING AUTHORITIES

- Storm Water Sewer - Scott Lindeback
 City of Wichita
 City Hall - 455 N. Main
 Wichita, KS. 67202 316-268-4908
- Water & Sanitary Sewer - Bill Perkins
 Wichita Water & Sewer Department
 City Hall - 455 N. Main
 Wichita, KS. 67202 316-268-4555
- Aquila Gas Company - Calvin Briggs
 1611 South Hoover
 Wichita, KS. 67209 316-941-1608
- Kansas Gas Service - Jim Coe
 1021 East 26th Street North
 Wichita, KS. 67219 316-832-3101
- Westar Energy - Shane Price
 201 N. Market
 Wichita, KS. 67202 316-261-6824
- SBC - Jim Toben
 154 North Broadway, Room 210
 Wichita, KS. 67202 316-268-2245



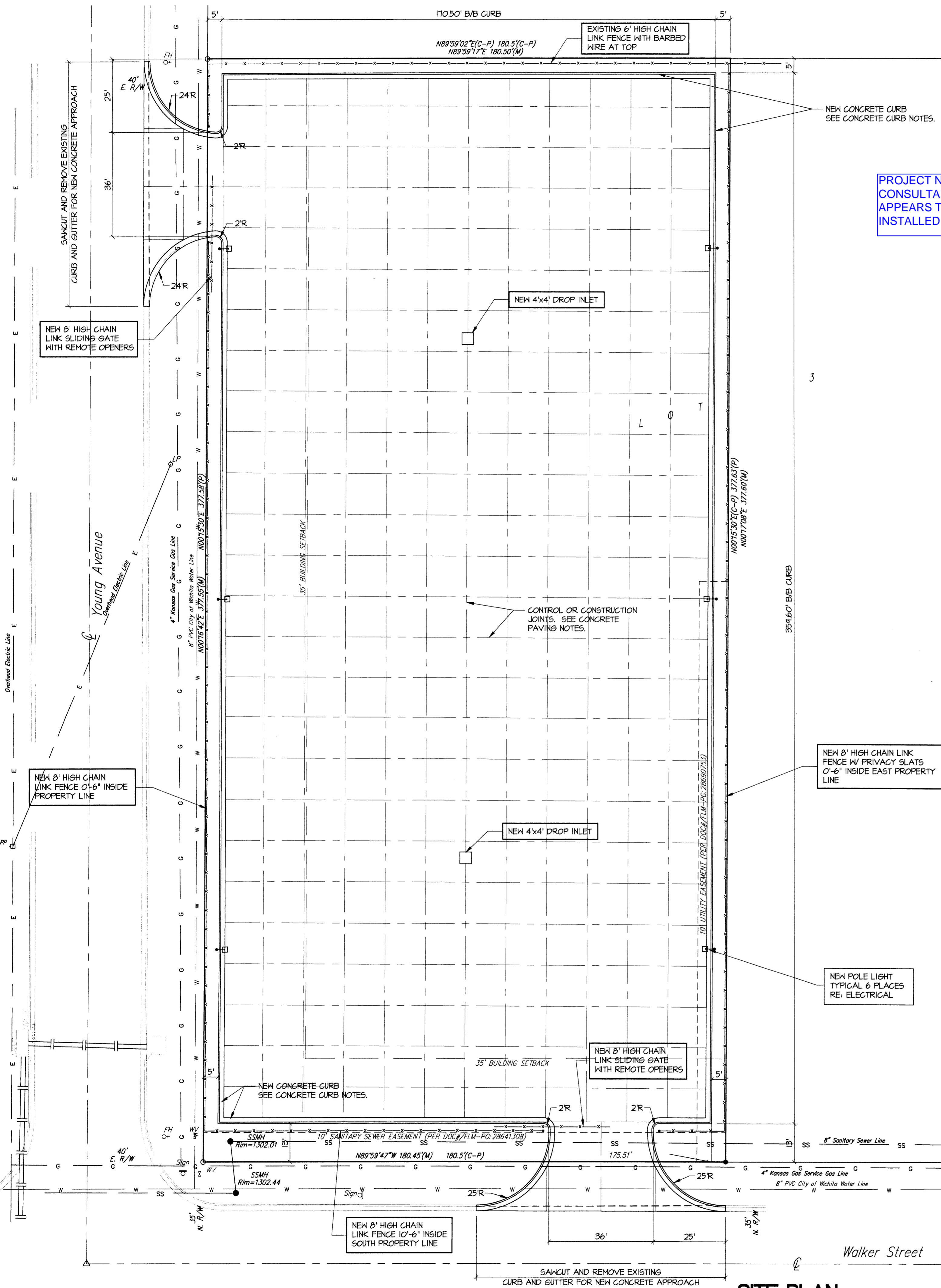
- FH = Fire Hydrant
- LP = Light Pole
- PP = Power Pole
- Sign = Sign
- SSMH = Sanitary Sewer Manhole
- WV = Water Valve
- #4 Baughman Rebar Set
- #4 Baughman Rebar Found
- #4 Rebar Found
- #6 Rebar in Thimble Found
- Chiseled Cross Found
- 3/4" Iron Pipe in Thimble Found
- 3/4" Iron Pipe Found
- 1/2" Iron Pipe Found
- #4 LS#168 Rebar Found
- (C) = Calculated
- (D) = Described
- (M) = Measured
- (P) = Platted

LEGEND



SITE NOTES:

CONCRETE PAVING, PROOF-ROLL SUBGRADE AND REPAIR ALL UNACCEPTABLE MATERIALS. PROVIDE 8" THICK, 4000 PSI, AIR ENTRAINED CONCRETE WITH 1" DOWELS AT 12" O.C. IN DOVEL BRACKETS AT CONTROL JOINTS ON 14' CENTERS BOTH WAYS, REINFORCED WITH #4 REBAR AT 16" O.C. EACH WAY, GEOTECHNICAL FABRIC (MIRAFI 600X) ABOVE AT LEAST 12" OF FLYASH STABILIZED SUBGRADE. CONSTRUCTION JOINTS WILL BE FORMED AND PREPARED FOR 1" DOWELS AT 12" O.C. FILL ALL JOINTS WITH TREMCO SPECTRUM 900SL, VULKEM 45, OR APPROVED EQUAL, PER MANUFACTURER'S RECOMMENDATIONS.
 CONCRETE CURBS: PROVIDE 6" HIGH TYPE CG-1 (DRY) CURB. REINFORCE WITH (2) #4 CONTINUOUS PROVIDE 1" DEEP SAWCUT JOINTS AT 7'-0" O.C. ACROSS ENTIRE CURB SECTION. PROVIDE 1/2" EXPANSION JOINTS AT 100' MAXIMUM SPACINGS AND AT RADIUS POINTS. PROVIDE (3) 5/8" x 2'-0" SMOOTH DOWELS AT EXPANSION JOINTS.



SITE PLAN
 SCALE: 1" = 20'-0"

Assumed Basis of Bearings = S90°00'00"W 1486.07'(M) & 1485.005'(C-P)

This drawing has been prepared by the Engineer, or under his supervision. His drawing is provided as an instrument of service for the project and is not to be used for any other purpose. Pursuant to the authorized work of the Engineer, the Engineer is not responsible for the accuracy of the information provided on this drawing. The Engineer is not responsible for the accuracy of the information provided on this drawing. The Engineer is not responsible for the accuracy of the information provided on this drawing.