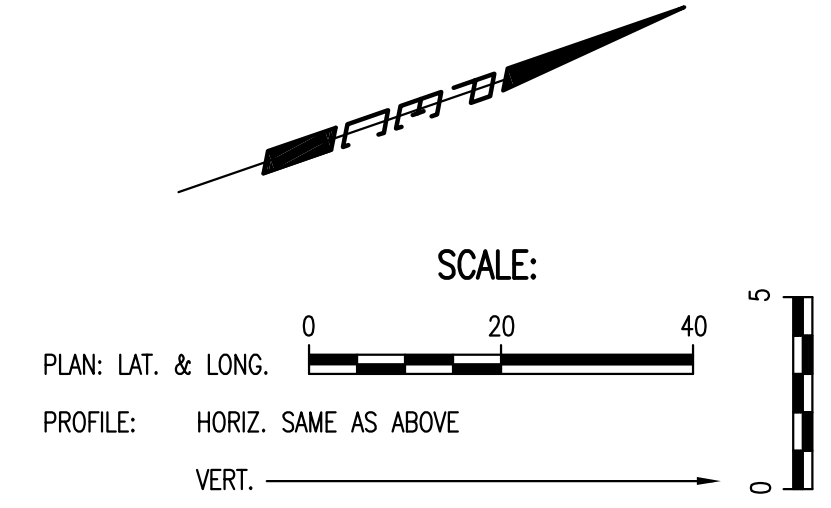
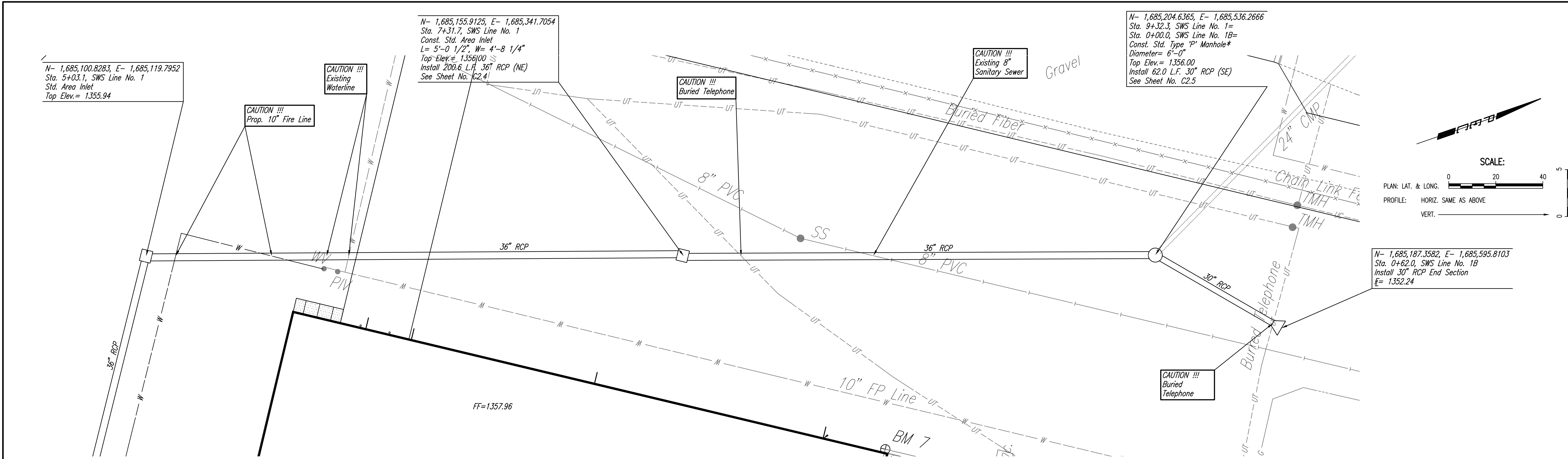


PLAN	CHECKED	BY	DATE
	CHECKED		

PROFILE	CHECKED	BY	DATE
	CHECKED		

Saved: 08-15-2008 10:45:32 AM by: RRY  
 Plot Scale: 1"=40'  
 C:\2008\08025\PPS\08025-C4.4-SWS-Plan



\* PRIOR TO BEGINNING CONSTRUCTION, THE CONTRACTOR SHALL EXCAVATE THE EXISTING 24" CMP AT SWS STA. 9+32.3. CONTRACTOR SHALL REMOVE EXISTING 24" CMP END SECTION AND REPLACE WITH PROPOSED STANDARD TYPE 'P' MANHOLE.

SWS LINE NO. 1

SWS LINE NO. 1B



HAWKER BECHCRAFT CORPORATION  
 WAREHOUSE B89  
 LINE NO. 1  
 STA. 5+03.1 TO STA. 9+32.3  
 LINE NO. 1B  
 JAMES L. ARMOUR, P.E. - CITY ENGINEER  
 CITY OF WICHITA PRIVATE PROJECT NO. 1909 PPS (607861)

Professional Engineering Consultants, P.A.  
 603 S. TOPICKA AVENUE, WICHITA, KANSAS 67202  
 316-262-2691 • FAX 316-262-3003

Designed By: RRY  
 Date: August 2008  
 Drawn By: SAW

Sheet C4.4 of 12