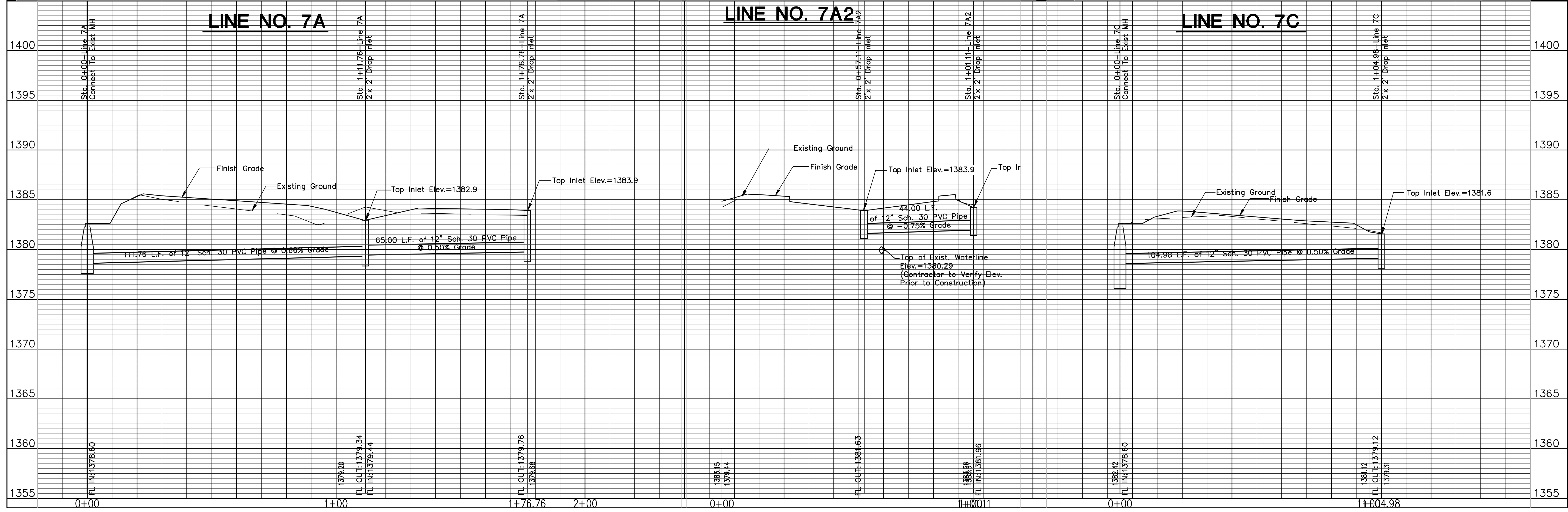


NOTE: Contractor shall verify location and depth of ALL existing utilities and report any possible conflicts to the Engineer prior to Storm Sewer Construction.



No.	Date	By	Approved	Revision

INWOOD CROSSING
PRIVATE STORM SEWER
STORM SEWER LINE NO. 7
CITY OF WICHITA, KANSAS
JAMES L. ARMOUR, P.E. - CITY ENGINEER
1955 PPS (607861)

POE & ASSOCIATES, INC.
CONSULTING ENGINEERS
5940 E. Central, Suite 200 • Wichita, KS 67208-4242
Phone 316/685-4114 • FAX 316/685-4444

FINAL

Designed By: S. Schmidt
Drawn By: S. Schmidt
Poe Job No.: 1909
Date: February, 2009

Sheet
3 of 12