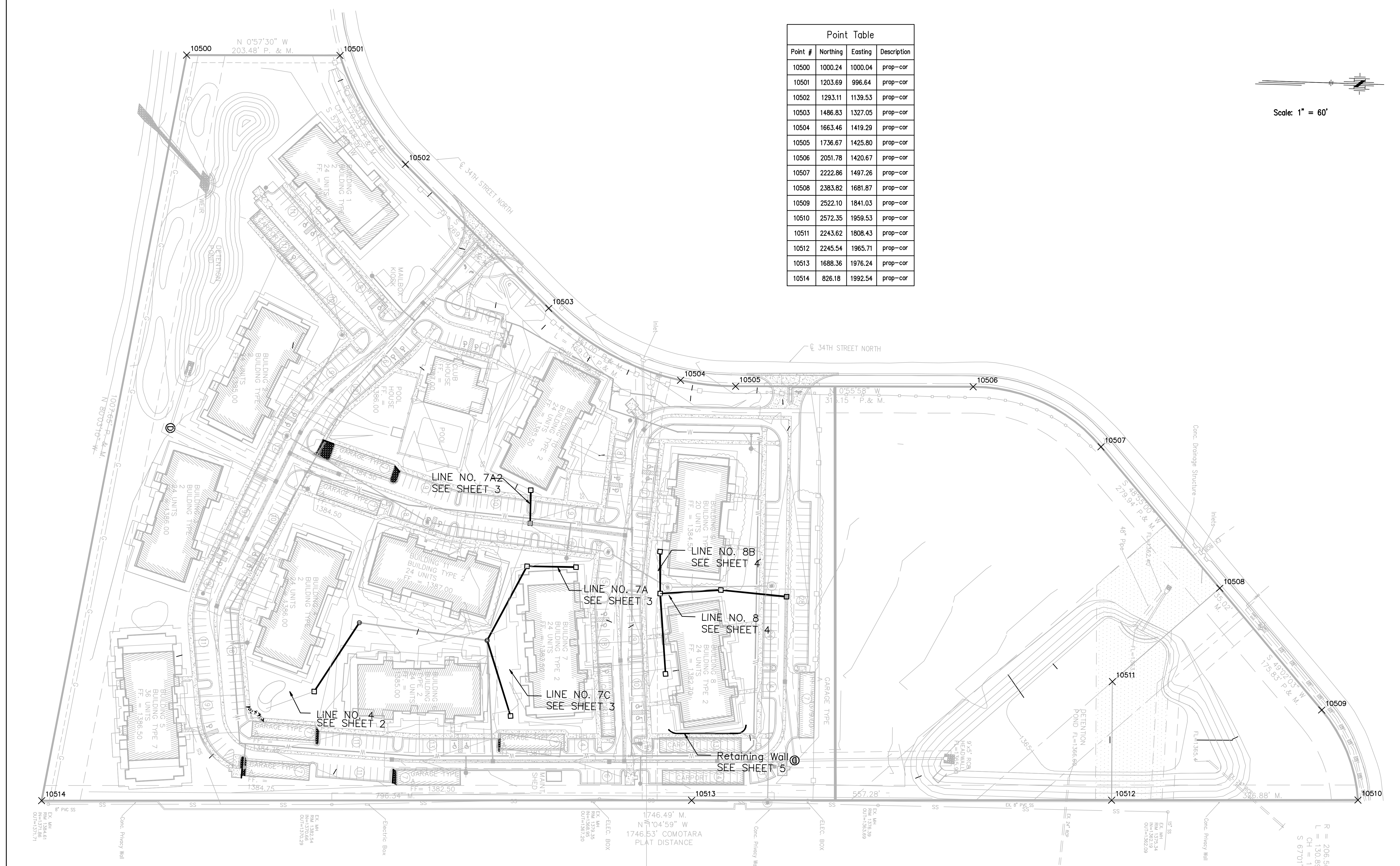
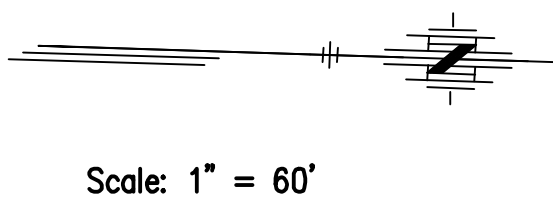


Point Table			
Point #	Northing	Easting	Description
10500	1000.24	1000.04	prop-cor
10501	1203.69	996.64	prop-cor
10502	1293.11	1139.53	prop-cor
10503	1486.83	1327.05	prop-cor
10504	1663.46	1419.29	prop-cor
10505	1736.67	1425.80	prop-cor
10506	2051.78	1420.67	prop-cor
10507	2222.86	1497.26	prop-cor
10508	2383.82	1681.87	prop-cor
10509	2522.10	1841.03	prop-cor
10510	2572.35	1959.53	prop-cor
10511	2243.62	1808.43	prop-cor
10512	2245.54	1965.71	prop-cor
10513	1688.36	1976.24	prop-cor
10514	826.18	1992.54	prop-cor



FINAL Designed By: S. Schmidt Drawn By: S. Schmidt P.O. Job No.: 1909 Date: February, 2009		POE & ASSOCIATES, INC. CONSULTING ENGINEERS 5940 E. Central, Suite 200 • Wichita, KS 67208-4242 Phone 316/685-4114 • FAX 316/685-4444	CITY OF WICHITA, KANSAS JAMES L. ARMOUR, P.E. - CITY ENGINEER 1955 PPS (607861)	No.	Date	By	Approved	Revision