

PRIVATE STORM WATER SEWER EXTENSION

TO SERVE DILLONS STORE #92 FUEL FACILITY

PRIVATE PROJECT NO. 2038 PPS (607861)

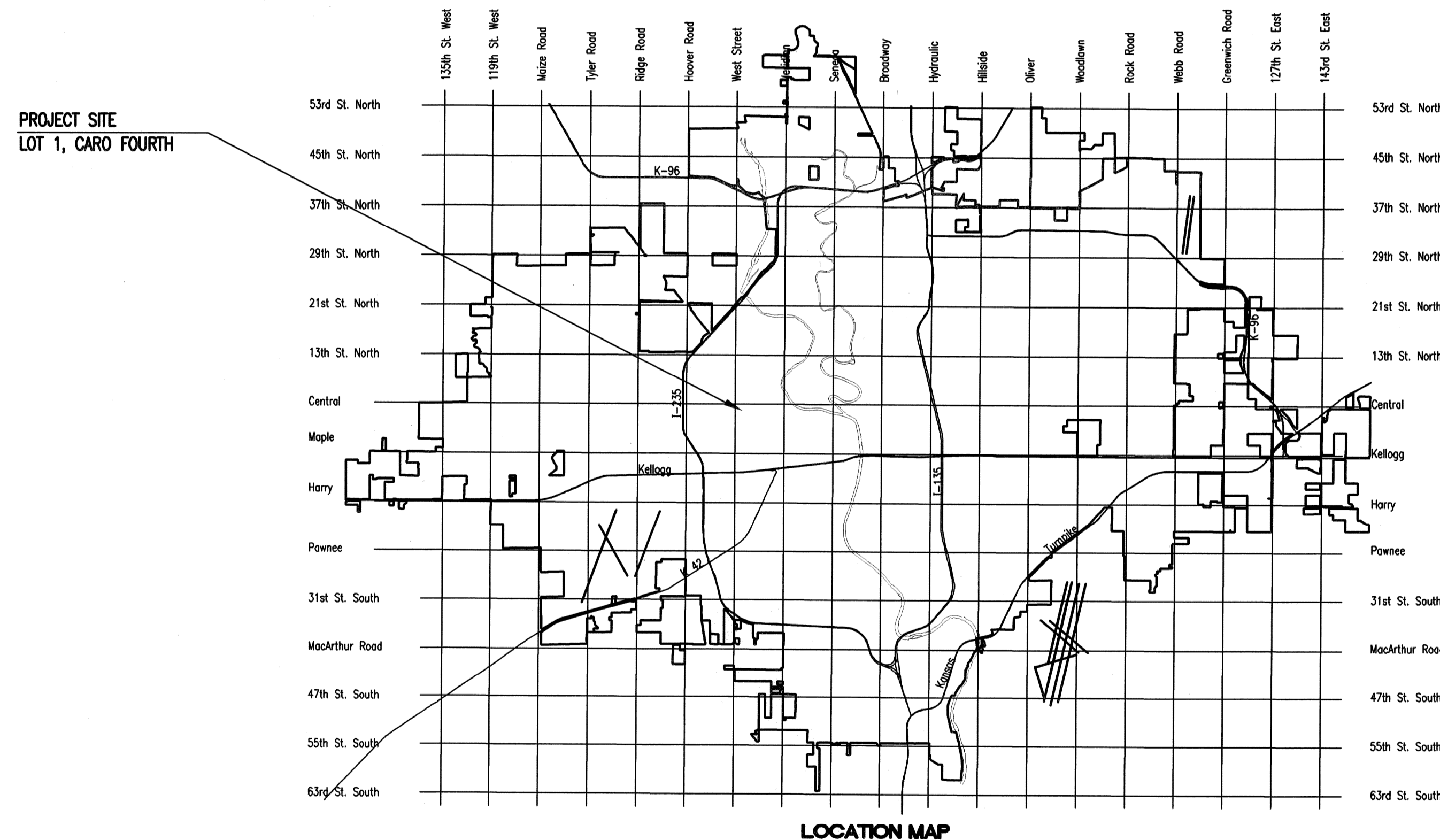
CITY OF WICHITA, KANSAS

JAMES L. ARMOUR, P.E. - CITY ENGINEER

NO INSPECTION WAS DONE BY A
INSPECTION FIRM.
CONCO CONSTRUCTION INSTALLED THE
PROJECT.
NO AS BUILTS TURN IN. 1-11-2011

INDEX OF SHEETS

SHEET C8.1	TITLE SHEET
SHEET C8.2	KEY MAP AND GENERAL NOTES
SHEET C8.3	PLAN
SHEET C8.4	PLAN/PROFILE
SHEET C8.5	AREA INLET DETAILS
SHEET C8.6	SOIL EROSION DETAILS



APPROVED AS NOTED
By CITY ENGINEER OF WICHITA

Sanitary Sewers _____
Storm Sewers Julianne Kallman 4-2-10
Driveway Approaches _____
Paving _____

NOTE TO CONTRACTOR

INSPECTION AND TESTING FOR THIS PROJECT IS TO BE PROVIDED BY A LICENSED CONSULTING ENGINEERING FIRM CONTRACTED BY THE OWNER/DEVELOPER. SAID INSPECTION TO BE IN ACCORDANCE WITH THE CITY OF WICHITA STANDARD CONSTRUCTION ENGINEERING PRACTICES AND CERTIFIED BY A LICENSED PROFESSIONAL ENGINEER. NO WORK SHALL BE PERFORMED IN DEDICATED EASEMENTS OR PUBLIC RIGHT-OF-WAY BY THE CONTRACTOR UNTIL SUCH INSPECTION IS ARRANGED FOR AND REQUIRED BONDS HAVE BEEN SUBMITTED TO AND APPROVED BY THE CITY NOR SHALL ANY WORK BE COMMENCED IN DEDICATED EASEMENTS OR PUBLIC RIGHT-OF-WAY WITHOUT WRITTEN AUTHORIZATION BY THE CITY ENGINEER. IMPROVEMENTS PERFORMED UNDER THIS PROJECT SHALL NOT BE ACCEPTED BY THE CITY UNTIL ALL APPLICABLE DOCUMENTATION HAS BEEN SUBMITTED TO THE CITY ENGINEER. THIS MAY INCLUDE: RECORD DRAWINGS, INSPECTION LOGS, TEST DOCUMENTATION, TV TAPES, AND A CERTIFICATE OF COMPLETION. THE ABOVE SHALL BE PERFORMED BY THE CONSULTING FIRM CONTRACTED TO INSPECT THIS PROJECT.

MARCH 2010

PLANS PREPARED BY
PROFESSIONAL ENGINEERING CONSULTANTS, P.A.
ENGINEERS
WICHITA, KANSAS

Professional Engineering Consultants, P.A.
310 S. 20th St., Wichita, KS 67202
Phone: (316) 262-2626 Fax: (316) 262-2628



Dillon Stores
1111 East 15th St., Wichita, KS 67201
Phone: (316) 665-5511



The Kroger Co.
210 S. 10th St., Wichita, KS 67202
Phone: (316) 364-4127 Fax: (316) 364-4044



REVISIONS

DESCRIPTION

No.	DESCRIPTION	DESIGNED BY	DRAWN BY	DATE

Project #: 36-06742-092-0645
Designed By: RMH
Drawn By: AEE
Checked By: _____
Date: MARCH 2010
Scale: _____
Disk File: _____
Model: _____

Address: 640 N. WEST ST.
DILLONS #92 WICHITA, KS

TITLE SHEET

Drawing No.:
C8.1

Saved: 04-02-2010 10:29:24 AM by: AEE
C:\2008\06742\092\06742-092_PPS\06742-092-C8_1-SWS-Title