

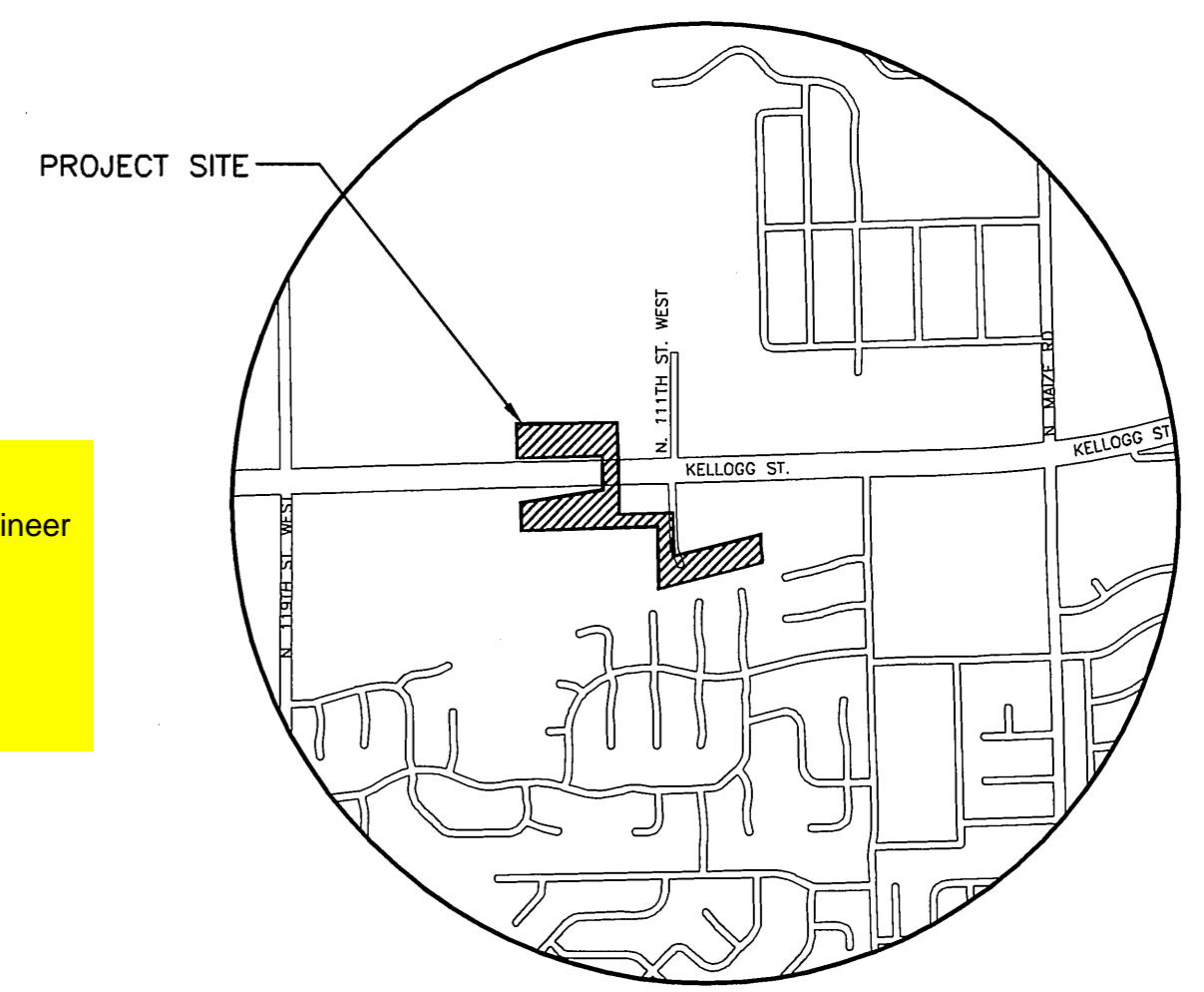
GENERAL NOTES

- UNLESS SHOWN OR STATED OTHERWISE ON THESE DRAWINGS, MATERIALS AND CONSTRUCTION SHALL BE IN ACCORDANCE WITH CITY OF WICHITA STANDARD SPECIFICATIONS.
- CONTRACTOR WILL BE REQUIRED TO PROVIDE A MINIMUM ADVANCE NOTICE OF SEVENTY-TWO (72) HOURS TO UTILITY COMPANIES PRIOR TO STARTING ANY EXCAVATION AS FOLLOWS:
 KANSAS ONE-CALL 800-344-7233
 OR LOCAL (WICHITA) 316-687-2470
 THE CONTRACTOR MUST NOTIFY THE FOLLOWING IN CASE OF AN EMERGENCY:
 SBC (TELEPHONE) 800-870-8390
 COX COMMUNICATIONS (CABLE) 316-262-0661
 KANSAS GAS SERVICE (GAS) 316-832-3101
 CITY OF WICHITA WATER & SEWER 316-262-6000
 WESTAR (ELECTRIC) 316-261-6512
 BLACKHILLS (GAS) 800-694-8989
- THE CONTRACTOR SHALL BE RESPONSIBLE FOR PRESERVING PROPERTY IRONS. THE CONTRACTOR WILL BE REQUIRED TO RE-ESTABLISH ANY PROPERTY IRONS WHICH ARE DAMAGED OR DESTROYED BY HIS CONSTRUCTION OPERATIONS. SUCH IRONS SHALL BE RE-ESTABLISHED BY A LICENSED LAND SURVEYOR IN ACCORDANCE WITH STATE LAWS.
- EXISTING UTILITIES AND THEIR LOCATIONS, AS SHOWN ON THE PLANS REPRESENT THE BEST INFORMATION OBTAINABLE FOR DESIGN. LOCATION INFORMATION HAS BEEN OBTAINED FROM THE VARIOUS UTILITY COMPANIES AND IS EITHER FROM COMPANY RECORD DRAWINGS OR COMPANY PROVIDED FIELD LOCATIONS. THE PLAN LOCATIONS SHOWN ARE NOT GUARANTEED. ADDITIONAL EXISTING UTILITIES MAY ALSO BE ENCOUNTERED.
- ALL DISPOSAL SITES MUST BE APPROVED BY THE KANSAS DEPARTMENT OF HEALTH AND ENVIRONMENT. A PERMIT SHALL BE OBTAINED FROM THE KANSAS DEPARTMENT OF AGRICULTURE FOR ANY STOCKPILING OR DISPOSAL OF MATERIAL IN A FLOOD PLAIN. ANY MATERIAL DUMPED IN WATERS OF THE UNITED STATES OR WETLANDS IS SUBJECT TO U.S. CORPS OF ENGINEERS PERMITTING REGULATIONS. ANY MATERIAL BURIED OR STOCKPILED BEYOND APPROVED CONSTRUCTION LIMITS WOULD REQUIRE ADDITIONAL ARCHAEOLOGICAL INVESTIGATIONS.
- COST OF EXCAVATION, HAULING, AND DUMPING OF EXCESS EXCAVATION SHALL BE SUBSIDIARY TO THE PROJECT.
- A PORTION OF EXCESS EXCAVATED MATERIAL SHALL BE MOUNDED AROUND MANHOLES WHICH EXTEND MORE THAN ONE (1) FOOT ABOVE THE EXISTING GROUND. SUCH MOUNDS SHALL BE CONSTRUCTED WITH ASIX (6) FOOT DIAMETER FLAT TOP WITH 4 TO 1 SIDE SLOPES DOWN TO THE ORIGINAL GROUND. THE ELEVATION OF THE FLAT TOP OF THE MOUND SHALL BE 0.4 FOOT BELOW THE TOP OF THE MANHOLE.
- ALL STUBS AND PLUGGED PIPES SHALL BE LOCATED WITH GREEN PLASTIC TAPE IN THE SAME MANNER AS RISERS.
- CONNECTING TO EXISTING MANHOLES:
 PRIOR TO LAYING SEWER LINES USING EXISTING STUBS IN EXISTING MANHOLES, THE CONTRACTOR SHALL EXPOSE AND VERIFY THE ELEVATION, GRADE AND ALIGNMENT OF EXISTING STUBS AND NOTIFY THE ENGINEER OF ANY DEVIATION FROM THE PLAN. WHERE CONNECTION TO AN EXISTING MANHOLE THAT DOES NOT HAVE AN EXISTING STUB OR THE STUB IS UNUSABLE DUE TO ELEVATION GRADE OR ALIGNMENT, THE CONTRACTOR SHALL BORE CUT INTO EXISTING MANHOLE WALL TO MAKE CONNECTION USING APPROVED WATER STOP GASKET, AND RESHAPE THE EXISTING MANHOLE INVERT TO PROVIDE SMOOTH FLOW. THE COST OF CONNECTING TO EXISTING MANHOLES IS INCIDENTAL TO THE PROJECT.
- TREES AND SHRUBS IN PUBLIC RIGHT-OF-WAY WHICH ARE IN DIRECT CONFLICT WITH PROPOSED NEW CONSTRUCTION SHALL BE REMOVED BY THE CONTRACTOR WITH THE ENGINEER'S APPROVAL. TREES AND SHRUBS WHICH ARE NOT IN DIRECT CONFLICT WITH PROPOSED NEW CONSTRUCTION SHALL BE SAVED AND PROTECTED FROM DAMAGE.
- CONTRACTOR SHALL NOT START WORK ON THE PROJECT UNTIL THE PROJECT INSPECTOR IS ASSIGNED TO THE PROJECT AND IS PRESENT ON THE SITE. ANY WORK DONE WITHOUT INSPECTION WILL BE REQUIRED TO BE UNCOVERED FOR INSPECTION.
- ALL LAWN/TURF AREAS DISTURBED BY CONSTRUCTION OF THE PROPOSED IMPROVEMENTS SHALL BE RESTORED WITH THE SAME GRASS/SOD AS EXISTING. RESTORATION OF DISTURBED AREAS SHALL INCLUDE, BUT NOT BE LIMITED TO, TOP SOIL PREPARATION, SEEDING, MULCH, AND/OR RESEEDING. ALL SEEDING/SODDING WORK SHALL BE IN ACCORDANCE WITH THE CITY OF WICHITA STANDARD SPECIFICATIONS AND THE CITY OF WICHITA ADMINISTRATIVE REGULATION NO. AR 6.5 WHICH GOVERNS CLEANUP AND RESTORATION OR REPLACEMENT FOLLOWING CONSTRUCTION. ALL COSTS FOR THIS WORK SHALL BE SUBSIDIARY TO THE LUMP SUM PRICE BID FOR 'SEEDING'.
- THE CONTRACTOR SHALL CONTAIN HIS OPERATIONS TO PERMIT TRAFFIC THROUGH AND ACROSS CONSTRUCTION AT EXISTING ROADWAYS AT ALL TIMES. THE CONTRACTOR SHALL ERECT WARNING SIGNS, FLASHING LIGHTS, AND BARRICADES IN COMPLIANCE WITH THE MANUAL ON UNIFORM TRAFFIC CONTROL DEVICES TO ENSURE SAFETY AS DIRECTED IN THE GENERAL CONDITIONS. THE CONTRACTOR SHALL LIMIT THE EXTENT OF TRENCH TO REMAIN OPEN OVERNIGHT AND WEEKENDS TO LESS THAN 50 FEET.

SANITARY SEWER PLANS FOR
C.O.W. LATERAL 23, MAIN 13, SWI

AN ADDITION TO THE CITY OF WICHITA
 SEDGWICK COUNTY, KANSAS
PROJECT NO. 468-84351
 JIM ARMOUR, P.E. - CITY ENGINEER
OCA - 744236

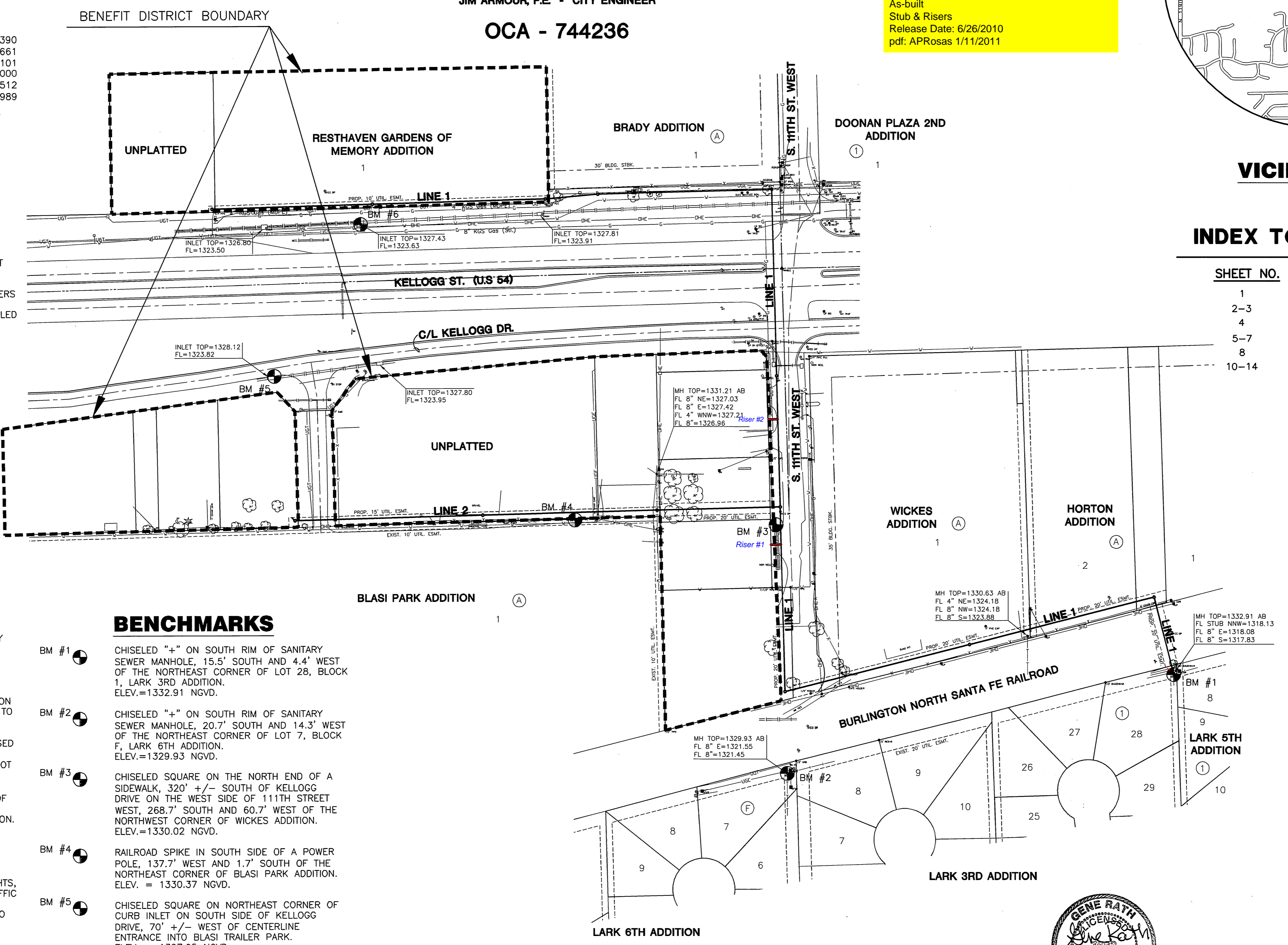
Duling Construction - Contractor
 K. Kerns - City of Wichita, Field Project Engineer
 M. Thom - City of Wichita, Inspector
 As-built
 Stub & Risers
 Release Date: 6/26/2010
 pdf: APRosas 1/11/2011



VICINITY MAP

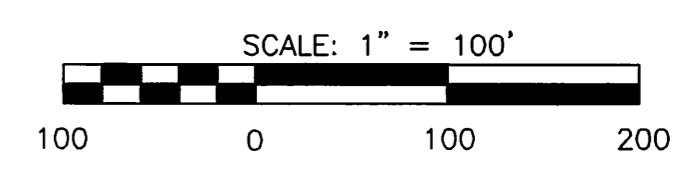
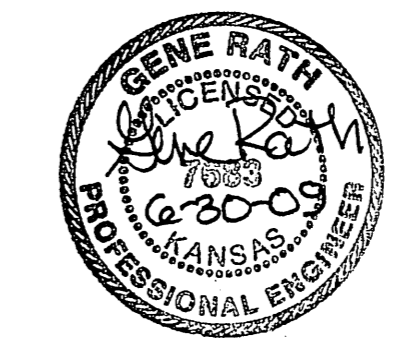
INDEX TO DRAWINGS

SHEET NO.	DESCRIPTION
1	TITLE SHEET
2-3	MANHOLE DETAILS
4	RISER DETAILS
5-7	LINE 1
8	LINE 2
10-14	BMP SHEETS



BENCHMARKS

- BM #1 CHISELED "+" ON SOUTH RIM OF SANITARY SEWER MANHOLE, 15.5' SOUTH AND 4.4' WEST OF THE NORTHEAST CORNER OF LOT 28, BLOCK 1, LARK 3RD ADDITION. ELEV.=1332.91 NGVD.
- BM #2 CHISELED "+" ON SOUTH RIM OF SANITARY SEWER MANHOLE, 20.7' SOUTH AND 14.3' WEST OF THE NORTHEAST CORNER OF LOT 7, BLOCK F, LARK 6TH ADDITION. ELEV.=1329.93 NGVD.
- BM #3 CHISELED SQUARE ON THE NORTH END OF A SIDEWALK, 320' +/- SOUTH OF KELLOGG DRIVE ON THE WEST SIDE OF 1111TH STREET WEST, 268.7' SOUTH AND 60.7' WEST OF THE NORTHWEST CORNER OF WICKES ADDITION. ELEV.=1330.02 NGVD.
- BM #4 RAILROAD SPIKE IN SOUTH SIDE OF A POWER POLE, 137.7' WEST AND 1.7' SOUTH OF THE NORTHEAST CORNER OF BLASI PARK ADDITION. ELEV. = 1330.37 NGVD.
- BM #5 CHISELED SQUARE ON NORTHEAST CORNER OF CURB INLET ON SOUTH SIDE OF KELLOGG DRIVE, 70' +/- WEST OF CENTERLINE ENTRANCE INTO BLASI TRAILER PARK. ELEV. = 1327.95 NGVD.
- BM #6 CHISELED SQUARE ON SOUTHEAST CORNER OF STORM WATER MANHOLE BOX ON NORTH SIDE OF KELLOGG, 80' +/- EAST OF CENTERLINE OF ENTRANCE INTO BLASI TRAILER PARK EXTENDED, 305' WEST AND 26.9' SOUTH OF SOUTHEAST CORNER RESTHAVEN GARDENS. ELEV. = 1327.50 NGVD.



MKEC
 ENGINEERING
 CONSULTANTS, INC.
 411 N. WEBB ROAD
 WICHITA, KS. 67206
 316-684-9600

SANITARY SEWER PLANS
C.O.W. LATERAL 23, MAIN 13, SWI

TITLE SHEET
 SHEET TITLE
 PROJECT NUMBER

DESIGN BY: JS
 DRAWN BY: JWC
 CHECKED BY: MAB

ISSUED: June 2009
 REVISED:

SHEET NO.
1 of 14

PLOTTED: Monday, June 20, 2009 @ 01:52PM

J:\CIVIL\07428 - LAR 23\DWG\SAN\07428B1.DWG