

**STORM WATER SEWER PLANS TO SERVE
MENARDS - WEST WICHITA, KS
STONEBRIDGE COMMERCIAL ADDITION**

**SWS PLAN &
PROFILE
LINE 3**
SHEET TITLE
PROJECT NUMBER
08626

DESIGN BY
MB
DRAWN BY
JWC
CHECKED BY
GJA

ISSUED
REVISED
**AS BUILT
12-06-10**

SHEET NO.
23 of 45

NOTE:
EROSION CONTROL ADD ALT.
INSTALL SCOUR STOP INSTEAD
OF RIP-RAP SEE SHEET 29

INSTALL 63.8 S.Y. OF
LIGHT STONE RIP-RAP
W/ GROUTED STONE
TOEWALL (14'x4'x2')

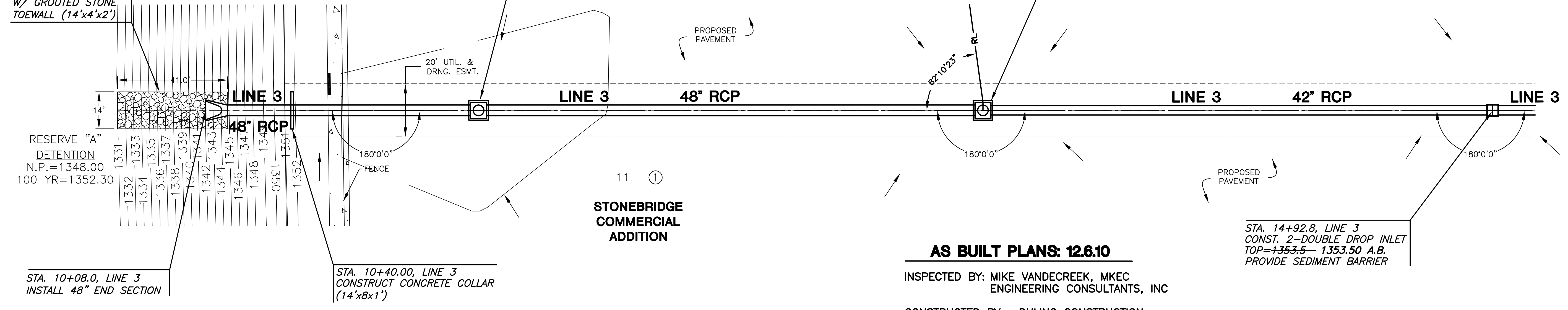
RESERVE "A"
DETENTION
N.P.=1348.00
100 YR=1352.30

STA. 10+08.0, LINE 3
INSTALL 48" END SECTION

STA. 11+10.8, LINE 3
CONST. REINFORCED CONC.
MANHOLE (6'X6') WITH
DEETER FRAME & GRATE NO.
1927 OR APPROVED EQUAL
MANHOLE TOP=1353.0-1353.08 A.B.
PROVIDE SEDIMENT BARRIER

STA. 13+00.8, LINE 3
CONST. REINFORCED CONC.
MANHOLE (6'X6') WITH
DEETER FRAME & GRATE NO.
1927 OR APPROVED EQUAL
MANHOLE TOP=1353.5-1353.52 A.B.
PROVIDE SEDIMENT BARRIER

STA. 14+92.8, LINE 3
CONST. 2-DOUBLE DROP INLET
TOP=1353.5-1353.50 A.B.
PROVIDE SEDIMENT BARRIER

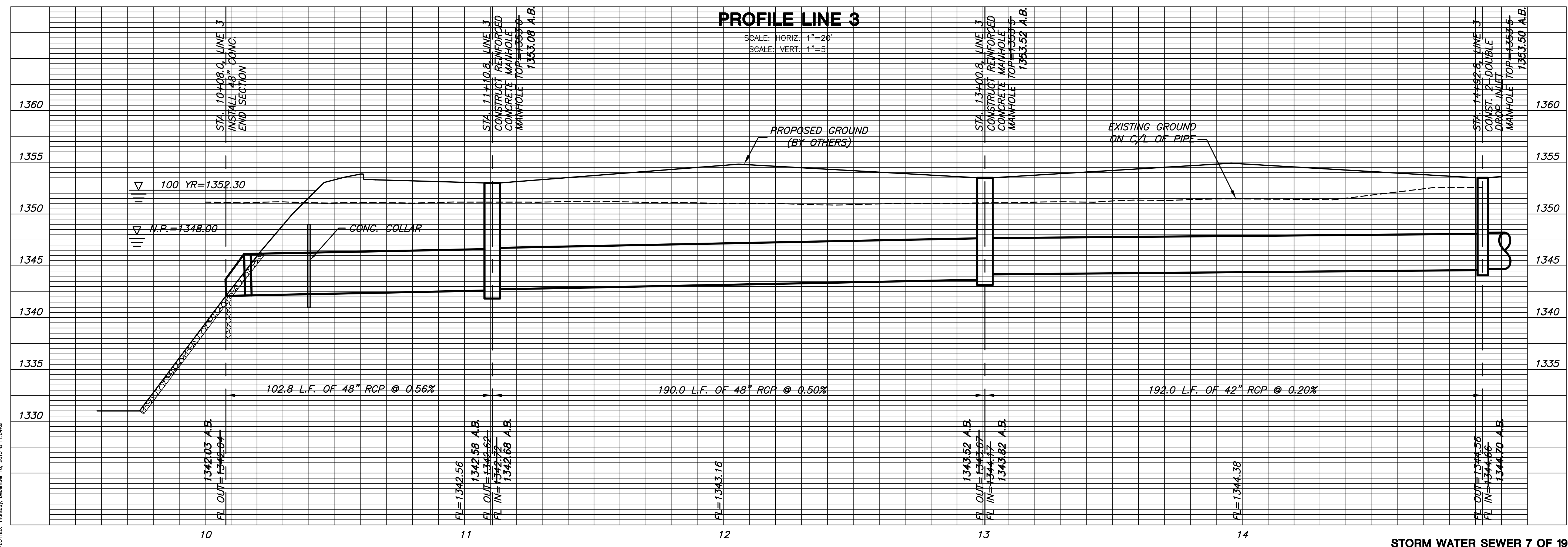


AS BUILT PLANS: 12.6.10
INSPECTED BY: MIKE VANDECREEK, MKEC
ENGINEERING CONSULTANTS, INC
CONSTRUCTED BY: DULING CONSTRUCTION
CO., INC.

PLAN LINE 3

PROFILE LINE 3

SCALE: HORIZ. 1"=20'
SCALE: VERT. 1"=5'



PLOTTED: Thursday, December 16, 2010 @ 11:04AM

J:\CIVIL\05440\08626-MENARDS-WEST WICHITA\AS BUILT\08626.DWG