


GENERAL NOTES

- UNLESS SHOWN OR OTHERWISE STATED ON THESE DRAWINGS, MATERIALS AND CONSTRUCTION SHALL BE IN ACCORDANCE WITH THE CITY OF WICHITA STANDARD SPECIFICATIONS.
- THE TOPS OF INLETS AND MANHOLES AS NOTED ON THE PLANS MAY VARY SO AS TO MEET PROPOSED TOP OF CURB ELEVATIONS OR PAVEMENT ELEVATIONS. THE FIELD ENGINEER SHALL LOCATE INLETS AND MANHOLES WITH REFERENCE TO PROPOSED PAVING PLANS OF THE PERTINENT STREETS.
- ALL CONCRETE SHALL BE STANDARD PAVING MIX UNLESS OTHERWISE NOTED.
- THE CONTRACTOR SHALL BE RESPONSIBLE FOR PRESERVING PROPERTY IRONS. THE CONTRACTOR SHALL BE REQUIRED TO RE-ESTABLISH ANY PROPERTY IRONS WHICH ARE DAMAGED OR DESTROYED BY HIS CONSTRUCTION OPERATIONS. SUCH IRONS SHALL BE RE-ESTABLISHED BY A LICENSED LAND SURVEYOR IN ACCORDANCE WITH STATE LAWS.
- TREES TO BE REMOVED ARE MARKED . ALL TREES WHICH IN THE OPINION OF THE FIELD ENGINEER CAN BE SAVED, SHALL BE SAVED.
- CONTRACTOR SHALL NOTIFY UTILITY COMPANIES OF CONSTRUCTION SCHEDULING.
- EXISTING UTILITIES AND THEIR LOCATIONS, AS SHOWN ON THE PLANS REPRESENT THE BEST INFORMATION OBTAINABLE FOR DESIGN. LOCATION INFORMATION HAS BEEN OBTAINED FROM THE VARIOUS COMPANIES AND IS EITHER FROM COMPANY UTILITY DRAWINGS OR COMPANY PROVIDED FIELD LOCATIONS. THE PLAN LOCATIONS SHOWN ARE NOT GUARANTEED. ADDITIONAL EXISTING UTILITIES MAY ALSO BE ENCOUNTERED.
- CONTRACTOR WILL BE REQUIRED TO PROVIDE A MINIMUM ADVANCE NOTICE OF SEVENTY-TWO (72) HOURS TO UTILITY COMPANIES TO STARTING ANY EXCAVATION AS FOLLOWS:

KANSAS ONE-CALL	800-344-7233
	OR 687-2470 (LOCAL WICHITA)

THE CONTRACTOR MUST NOTIFY THE FOLLOWING IN CASE OF EMERGENCY:

COX COMMUNICATIONS (CABLE)	262-0661
WESTAR (ELECTRIC)	261-6512
KANSAS GAS SERVICE (GAS)	832-3101
SBC (TELEPHONE)	800-870-8390
CITY OF WICHITA WATER & SEWER	262-6000
BLACK HILLS ENERGY (GAS)	800-303-0357
- RUBBLE FROM THE REMOVAL OF MISCELLANEOUS STRUCTURES AND EXCESS EXCAVATION WHICH IS TO BE WASTED SHALL BE DISPOSED OF ON SITES TO BE PROVIDED BY THE CONTRACTOR. THESE SITES SHALL BE APPROVED BY THE ENGINEER AS TO SUITABILITY, APPEARANCE AND SITE LOCATION. LOCATIONS THAT, IN THE OPINION OF THE ENGINEER, WILL LEAVE AN UNSIGHTLY APPEARANCE WILL NOT BE APPROVED. ALL DISPOSAL SITES MUST BE APPROVED BY THE KANSAS DEPARTMENT OF HEALTH AND ENVIRONMENT. MATERIAL EITHER STOCKPILED OR DISPOSED OF IN A FLOOD PLAIN WOULD REQUIRE A KANSAS STATE BOARD OF AGRICULTURE PERMIT. ANY MATERIAL DUMPED IN WATERS OF THE UNITED STATES OR WETLANDS IS SUBJECT TO U.S. CORPS OF ENGINEERS PERMITTING REGULATIONS. ANY MATERIAL BURIED OR STOCKPILED BEYOND APPROVED CONSTRUCTION LIMITS WOULD REQUIRE ADDITIONAL ARCHAEOLOGICAL INVESTIGATIONS UNLESS BURIED IN A PREVIOUSLY APPROVED BORROW LOCATION.
- CONTRACTOR SHALL RESEED AND MULCH ALL DISTURBED AREAS. COST SHALL BE CONSIDERED SUBSIDIARY TO SITE RESTORATION.

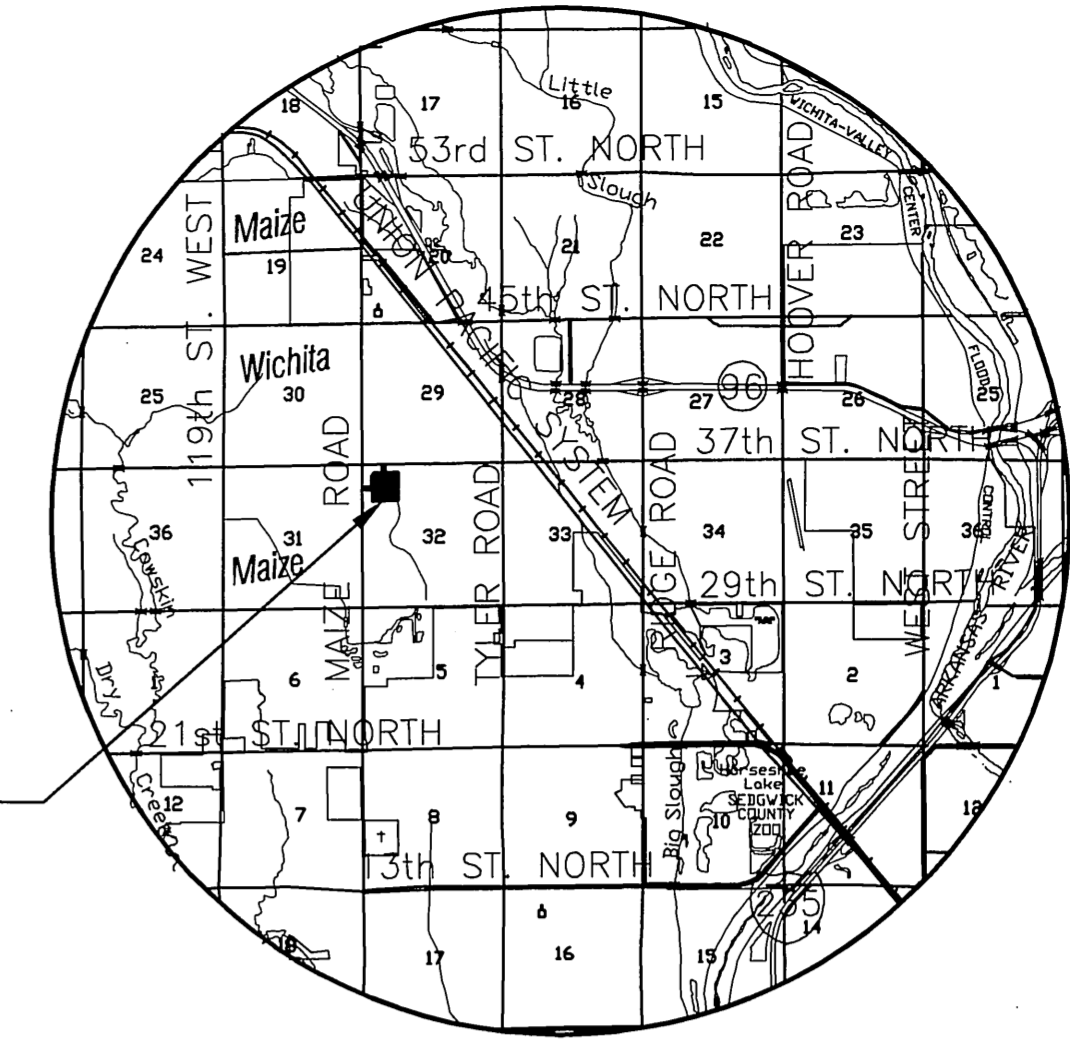
SUMMARY OF QUANTITIES		
SWS PIPE RCP 15"	115	L.F.
SWS PIPE RCP 24"	525	L.F.
SWS PIPE RCP 30"	390	L.F.
SWS PIPE RCP 36"	825	L.F.
SWS PIPE RCP 42"	595	L.F.
SWS PIPE RCP 48"	590	L.F.
INLET, CURB 1A (5'X3')	1	EA.
INLET, CURB 1A (5'X4')	2	EA.
INLET, CURB 1A (5'X5')	6	EA.
INLET, CURB 1A (5'X6')	1	EA.
INLET, CURB 1A DBL. (10'X6')	1	EA.
INLET, DROP (2'X4')	4	EA.
INLET, DROP (4'X4')	3	EA.
MH, 4' TYPE "A" SHALLOW	1	EA.
MH, 5' TYPE "P"	1	EA.
MH, 6'X6' CONC. W/GRATE	2	EA.
RIP-RAP, LIGHT STONE	214	SY.
CONC. COLLAR	4	EA.

QUANTITIES ARE PROVIDED FOR INFORMATION ONLY. CONTRACTOR RESPONSIBLE TO VERIFY ALL QUANTITIES.

MENARDS - WEST WICHITA, KS

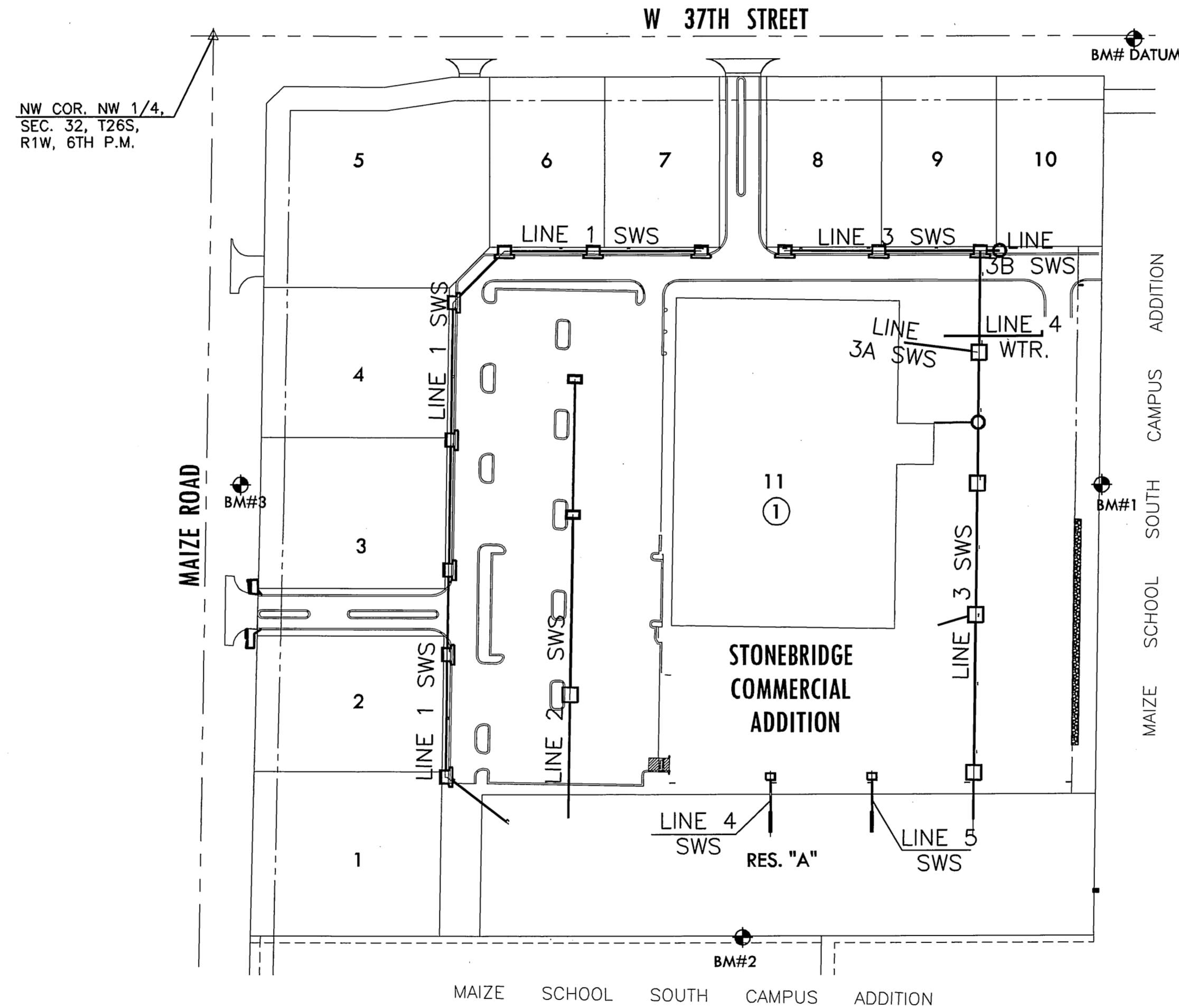
THE CITY OF WICHITA, KANSAS
 JAMES L. ARMOUR, P.E. - CITY ENGINEER

STORM WATER SEWER PLANS FOR STONEBRIDGE COMMERCIAL ADDITION CITY OF WICHITA PRIVATE PROJECT NO.2046PPS (607861)

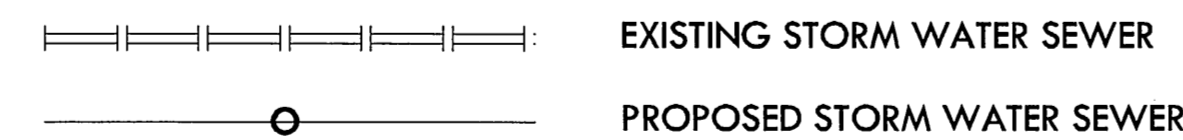


VICINITY MAP

PROJECT LOCATION



LEGEND



BENCHMARKS

- Datum BM: Top of "T" post 35' ± N. of the N. line of NW 1/4, Sec. 32, T26S, R1W and 1384' ± E. of NW. corner of said NW 1/4. Elev. = 1353.54 (NGVD 29)
- BM#1: Top of "T" post 660' ± S. of the N. line of NW 1/4, Sec. 32, T26S, R1W and 1325' ± E. of W. line of said NW 1/4. Elev. = 1351.69 (NGVD 29)
- BM#2: Top of "T" post 675' ± E. of the W. line of NW 1/4, Sec. 32, T26S, R1W and 1320' ± S. of the N. line of said NW 1/4. Elev. = 1351.79 (NGVD 29)
- BM#3: Square cut on N. end of concrete pipe 78' SW. of the NW. corner Lot 3, Block 1, Stonebridge Commercial Addition and being 50' ± E. of the W. line of NW 1/4, Sec. 32, T26S, R1W. Elev. = 1353.59 (NGVD 29)

AS BUILT PLANS: 12.6.10

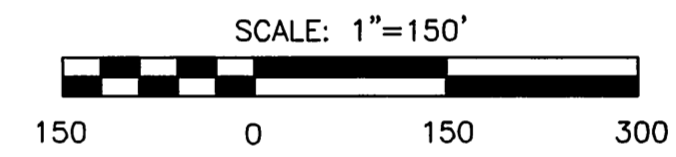
INSPECTED BY: MIKE VANDECREEK, MKEC
 ENGINEERING CONSULTANTS, INC

CONSTRUCTED BY: DULING CONSTRUCTION CO., INC

AS BUILT PLANS: 12.6.10

INSPECTED BY: MIKE VANDECREEK, MKEC
 ENGINEERING CONSULTANTS, INC

CONSTRUCTED BY: DULING CONSTRUCTION CO., INC



INDEX TO DRAWINGS

SHEET NO.	DESCRIPTION
1	TITLE SHEET
2-4	LINE 1
5-6	LINE 2
7-8	LINE 3
9	LINE 3, 3A & 3B
10	LINE 4 & 5
11	DETENTION POND GRADING
12	GRADING PLAN & DETAILS
13	EROSION CONTROL DETAILS -ALT.
14-17	INLET DETAILS
18-19	MANHOLE DETAILS

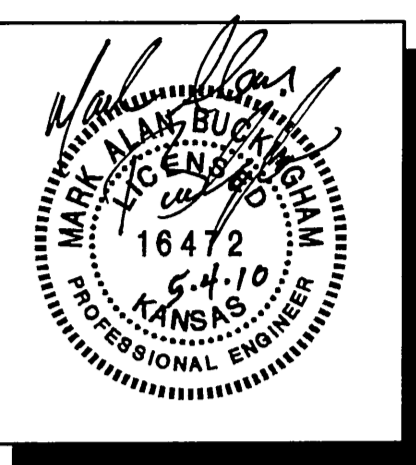
APPROVED AS NOTED
 BY CITY ENGINEER OF WICHITA,
 BY WICHITA WATER & SEWER DEPARTMENT,
 & BY WICHITA FIRE DEPARTMENT

Storm Water (Public Works)
Julianne Kellerman 5-5-10

NOTE TO CONTRACTORS

Public Property:
 Inspection and testing for the storm water sewer line is to be provided by a Licensed Consulting Engineering Firm under contract with the Owner/Developer. Said inspection to be in accordance with the City of Wichita Standard Construction Engineering Practices and certified by a Professional Engineer licensed in the state of Kansas. No work shall be performed in dedicated easements or public rights-of-way by the Contractor without such inspection, nor shall any work be commenced without written authorization by the City Engineer. All construction and materials shall comply with the City of Wichita Specifications and Standards (on file and available in the City Engineer's Office).

MKEC
 ENGINEERING
 CONSULTANTS, INC.
 411 N. WEBB ROAD
 WICHITA, KS. 67206
 316-684-9600



**STORM WATER SEWER PLANS TO SERVE
 MENARDS - WEST WICHITA, KS
 STONEBRIDGE COMMERCIAL ADDITION**

SWS TITLE

SHEET TITLE: 08626
 PROJECT NUMBER

DESIGNED: DACR | DRAWN: DACR | MAB | CHECKED: MAB

ISSUED: CONSTRUCTION 5-04-10

REVISION: Project Number & Quantity Table

AS-BUILT

SHEET NO.

17 of 45