

**PAVING AND INCIDENTAL DRAINAGE PLANS FOR  
AVALON PARK 3RD ADDITION  
PHASE 2**

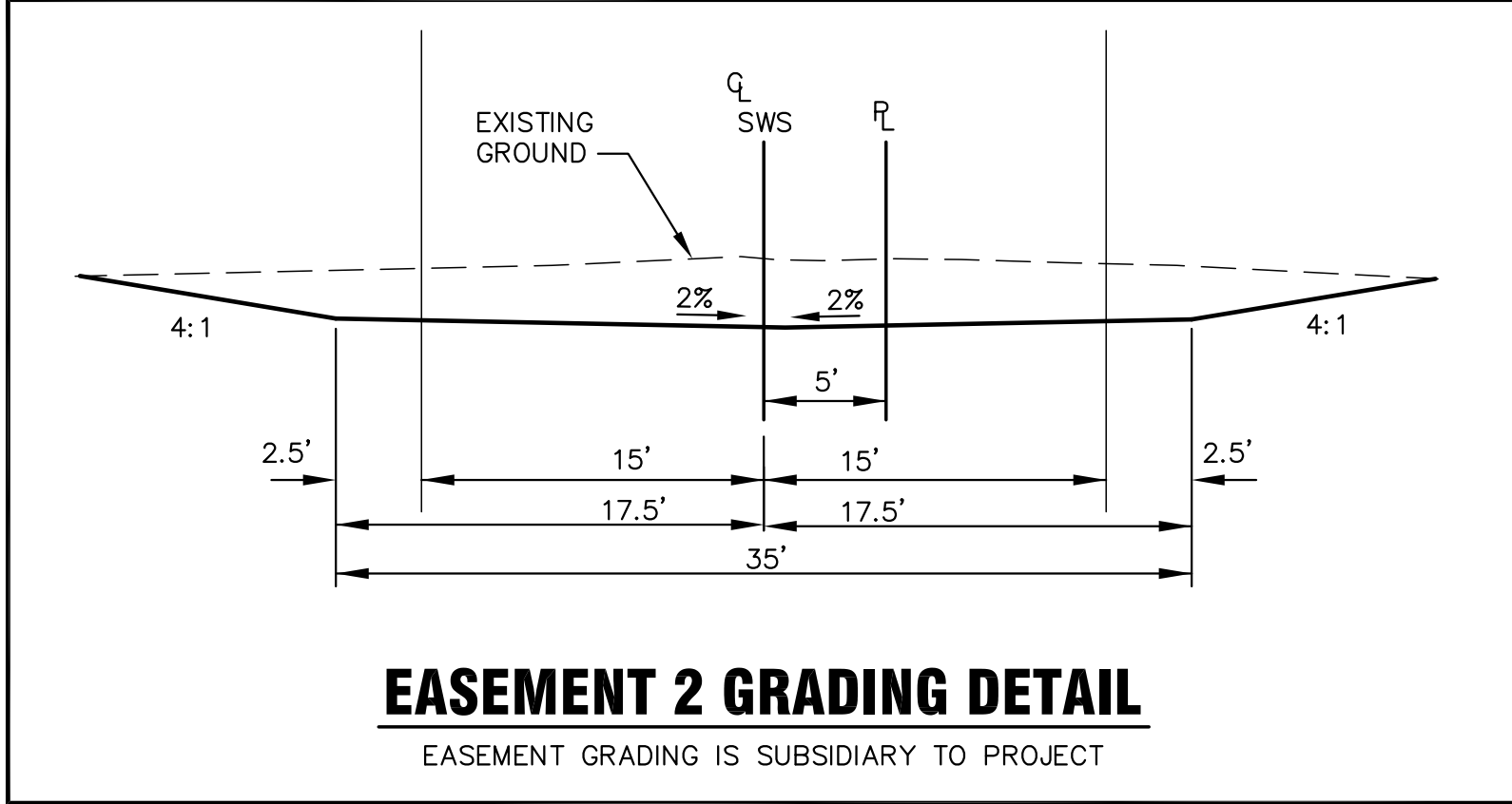
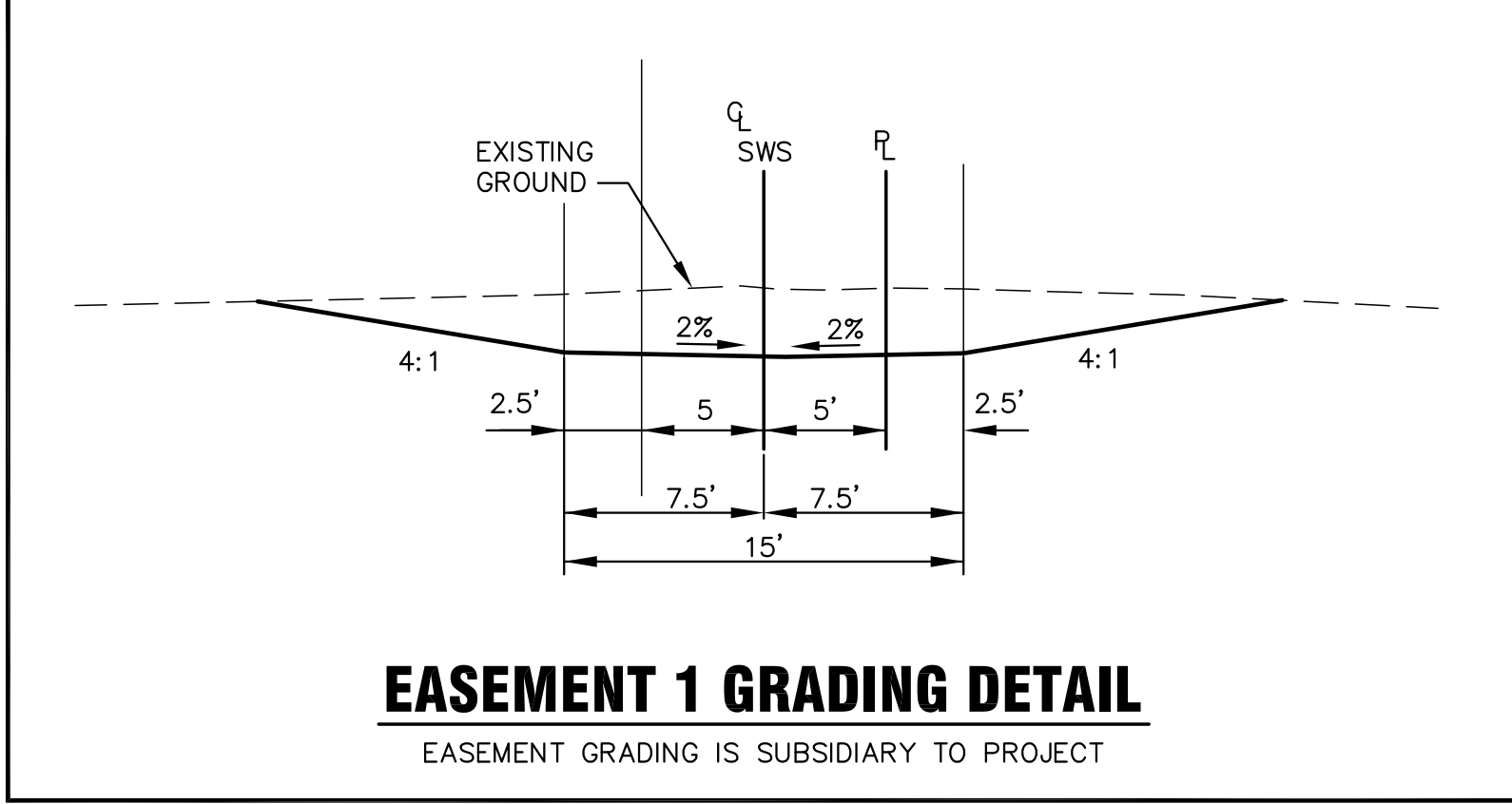
**EROSION CONTROL /  
EASEMENT GRADING**  
SHEET TITLE  
10228  
PROJECT NUMBER

DFL / JWC / GJA  
DESIGNED DRAWN CHECKED

ISSUED  
January 2011

REVISED

SHEET NO.  
20 of 35

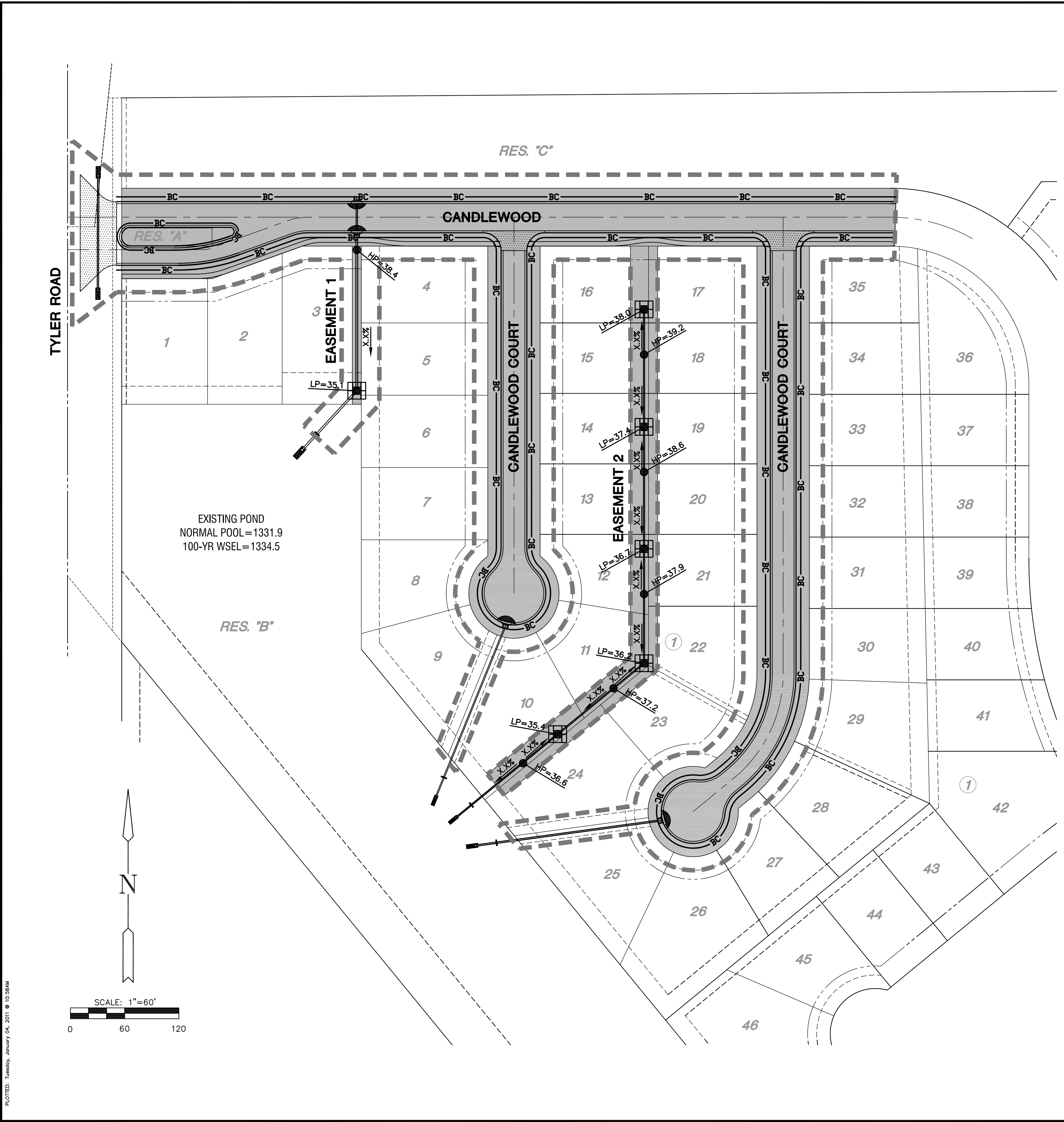


**LEGEND**

- ESTIMATED SEEDING LIMITS (5.27 ACRES)
- PROPOSED STORM SEWER LINE
- ◐ CURB INLET FILTER ( 4 EA )
- ◻ INLET PROTECTION ( 6 EA )
- BC — BACK OF CURB PROTECTION ( 4,340 L.F. )
- ▭ GRADING LIMITS

**EROSION CONTROL & SEEDING NOTES**

1. EROSION CONTROL IS TO MEET ALL FEDERAL, STATE, COUNTY & LOCAL CODE STANDARDS.
2. CONTRACTOR SHALL PROVIDE AND PRESERVE EROSION PROTECTION THROUGHOUT PROJECT CONSTRUCTION. THE PLAN PROVIDED HERE IS FOR FINAL PROTECTION, VARIOUS PHASES OF THIS PLAN SHALL BE IMPLEMENTED OR MODIFIED TO CONTROL EROSION. MODIFICATIONS OF THE PLAN SHALL BE APPROVED BY THE OWNER'S REPRESENTATIVE.
3. SEEDING AREAS SHALL BE PREPARED FOR PLANTING WITH COMMON AGRICULTURAL TECHNIQUES. ALL RESERVE AREAS SHALL BE FINE GRADED USING SMALL EQUIPMENT. REMOVE EXISTING GRASS, VEGETATION, AND TURF. DO NOT MIX INTO SURFACE SOIL. LOOSEN SOIL TO A DEPTH OF AT LEAST 6 INCHES. GRADE AREAS TO A SMOOTH UNIFORM SURFACE PLANE. ROLL, RAKE, AND REMOVE RIDGES AND FILL DEPRESSIONS. THE SURFACE SHALL BE FREE FROM STICKS, SMALL STONES, AND OTHER EXTRANEOUS MATERIALS. APPROVE WITH OWNER'S REPRESENTATIVE BEFORE PLANTING.
4. CONTRACTOR IS RESPONSIBLE FOR MAINTAINING AND IMPLEMENTING ALL EROSION CONTROL. COST IS SUBSIDIARY TO CHECK DAMS AND STABILIZED CONSTRUCTION ENTRANCE.
5. ALL SEED SHALL BE DISTRIBUTED WITH AN ACCEPTABLE DRILL INTENDED FOR SUCH OPERATIONS, OR OTHER EQUIPMENT APPROVED BY THE OWNER'S REPRESENTATIVE. SEEDING DEPTH SHALL BE 1/4".
6. SEED AND FERTILIZE AS FOLLOWS:  
PERENNIAL RYE @ 200 LBS./ACRE  
10-20-10 @ 350 LBS./ACRE  
(ESTIMATED SEEDING AREA = 5.27 ACRES)
7. ALL SEEDED AREAS SHALL BE IMMEDIATELY MULCHED W/ PRAIRIE HAY AT 2 TONS/ACRE. ANCHOR MULCH BY CRIMPING INTO TOPSOIL WITH SUITABLE MECHANICAL EQUIPMENT.



PLOTTED: Tuesday, January 04, 2011 @ 10:58AM

J:\PROJECTS\2010\10228\_AVALON\_PARK\CADD\CIVIL\PAV\10228\_EROS.DWG