

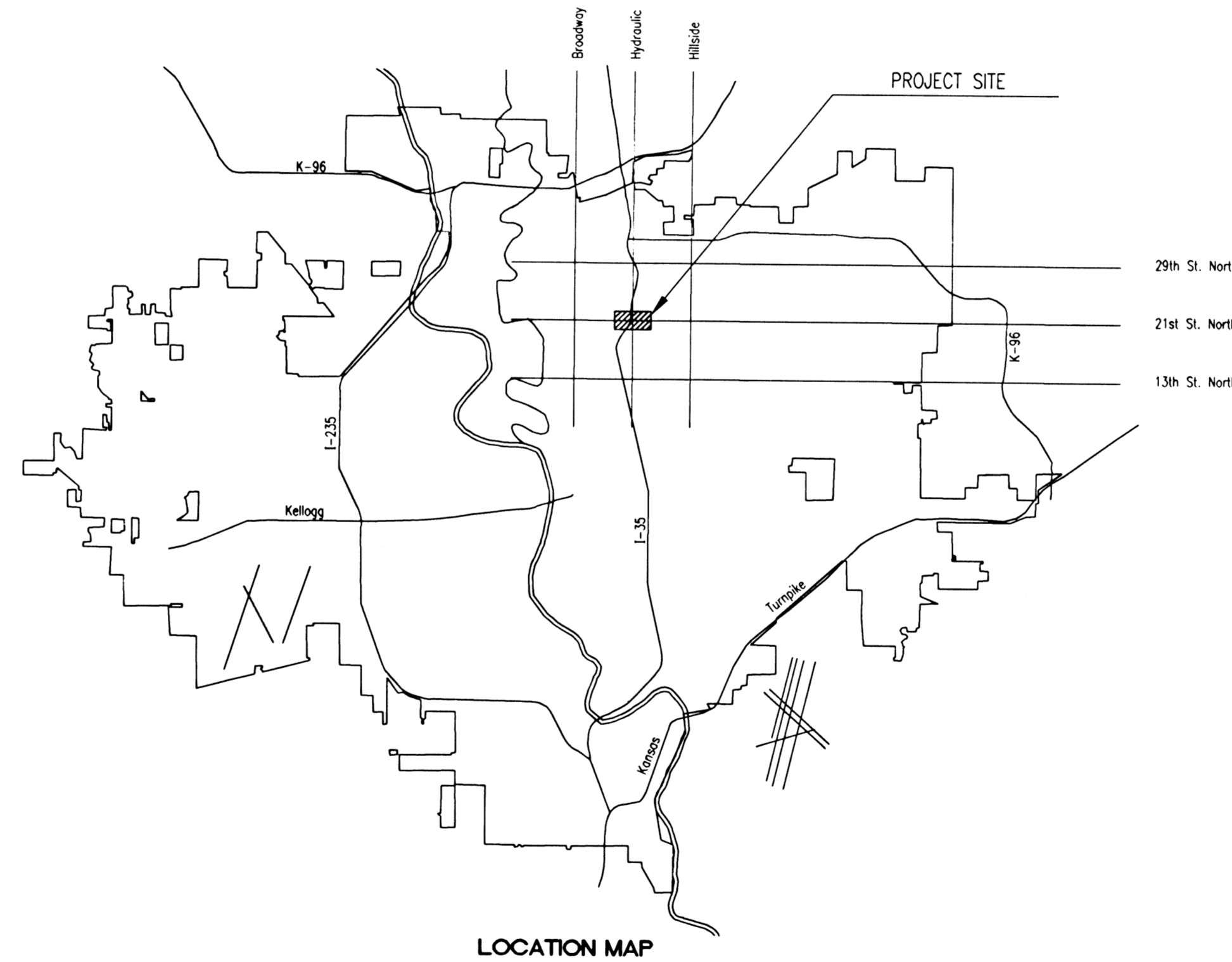
CONSTRUCTION PLANS FOR

83203

21ST STREET NORTH AND I-135 SANITARY SEWER RELOCATION

FOR
THE CITY OF WICHITA,
SEDGWICK COUNTY, KANSAS
MICHAEL E. LINDEBAK, P.E. - CITY ENGINEER

NOT AN AS-BUILT



INDEX OF SHEETS

SHEET NO. 1	TITLE SHEET
SHEET NO. 2	KEY MAP AND GENERAL NOTES
SHEET NO. 3	HORIZONTAL & VERTICAL CONTROL MAP
SHEET NO. 4	PLAN/PROFILE
SHEET NO. 5	STANDARD/SPECIAL SHALLOW MANHOLES TYPE 'A' & 'B'
SHEET NO. 6	SHALLOW MANHOLES TYPE 'P' & 'C'
SHEET NO. 7	FRAME & COVER DETAILS
SHEET NO. 8-11	SOIL EROSION BMP DETAILS

OCA NO. 620307

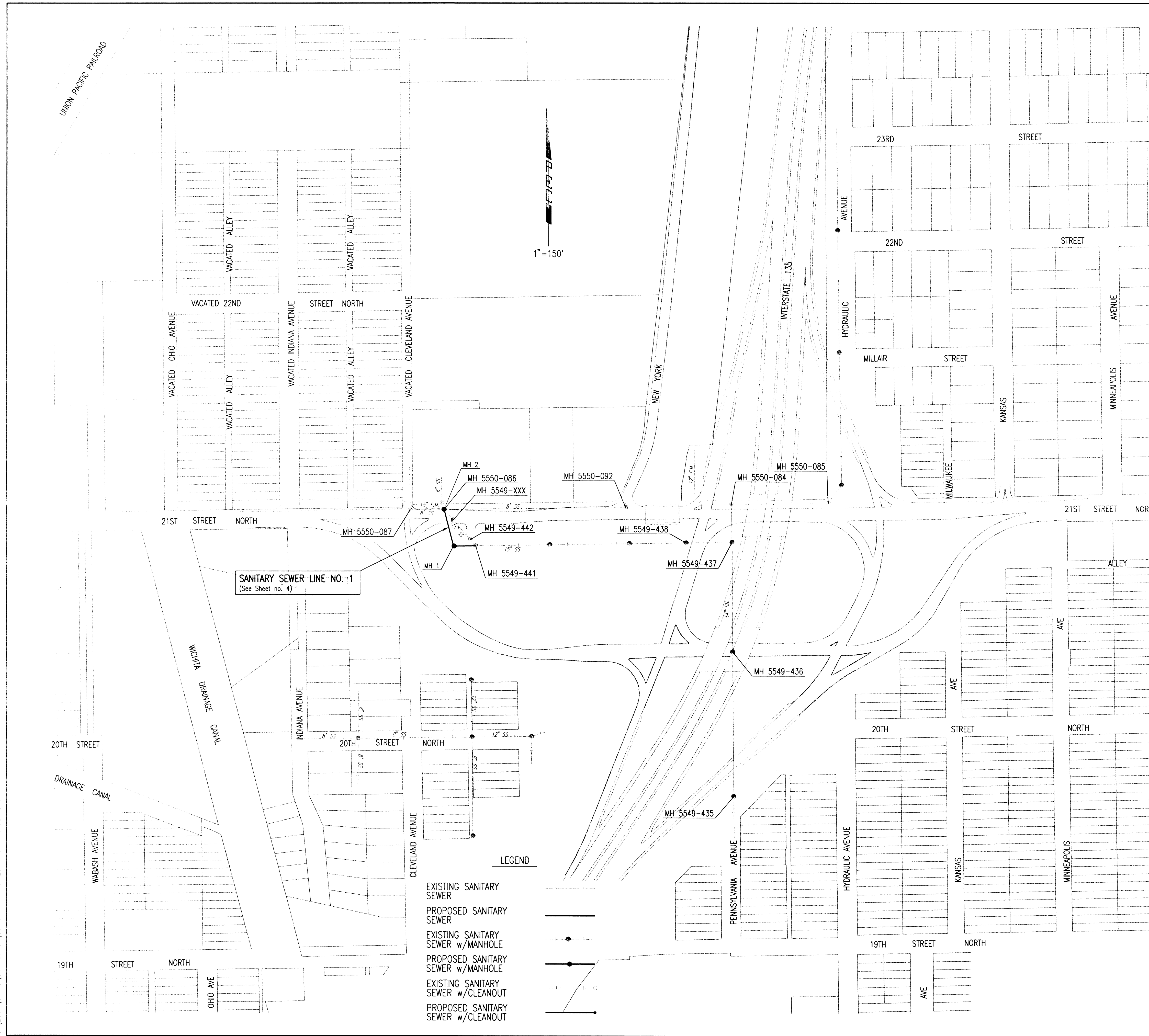
CITY OF WICHITA PROJECT NO. 468-83203

SEPTEMBER 2001

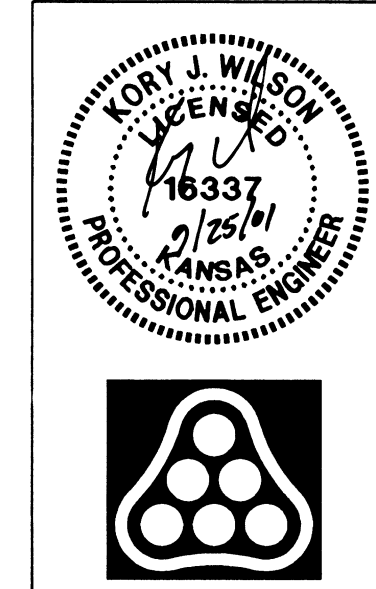
PLANS PREPARED BY
PROFESSIONAL ENGINEERING CONSULTANTS, P.A.
ENGINEERS
WICHITA, KANSAS



DSNR: K/W OPR: DAW SCALE: 1"=150.00
 0:\2001\01113\San Sewer\SS&E\MAP_09-25-2001 10:50:10 am



- GENERAL NOTES
- ALL CONSTRUCTION AND MATERIALS TO COMPLY WITH CITY OF WICHITA SPECIFICATIONS AND STANDARDS.
 - ALL ELEVATIONS SHOWN ARE U.S.G.S. DATUM. (U.S.G.S.-11874=CITY DATUM)
 - THE CONTRACTOR SHALL LIMIT THE EXTENT OF TRENCH TO REMAIN OPEN OVERNIGHT AND WEEKENDS TO LESS THAN 50 FEET.
 - CONTRACTOR WILL BE REQUIRED TO PROVIDE A MINIMUM ADVANCE NOTICE OF FORTY-EIGHT (48) HOURS TO UTILITY COMPANIES PRIOR TO STARTING ANY EXCAVATION AS FOLLOWS:
 KANSAS ONE-CALL 687-2470
 THE CONTRACTOR MUST NOTIFY THE FOLLOWING IN CASE OF AN EMERGENCY:
 COX COMMUNICATIONS 262-0661
 KGE - GAS DIVISION 832-3169
 KGE - ELECTRIC DIVISION 383-8600
 PEOPLES NATURAL GAS 1(800)-527-0357
 SOUTHWESTERN BELL TELEPHONE CO. 1(800)-870-8390
 CITY OF WICHITA WATER DEPARTMENT 268-4908
 CITY OF WICHITA SEWER MAINTENANCE 268-4908
 - UNDERGROUND UTILITY SERVICE LINES AND OVERHEAD UTILITY POLE LINES ARE TO BE ADJUSTED AS NECESSARY BY OTHERS PRIOR TO CONSTRUCTION UNLESS THE PLANS SPECIFICALLY CALL FOR THEIR ADJUSTMENT BY THE CONTRACTOR OR UNLESS THE PLANS SPECIFICALLY IDENTIFY A UTILITY TO BE ADJUSTED BY ITS OWNER DURING CONSTRUCTION. EXISTING UTILITIES AND THEIR LOCATIONS, AS SHOWN ON THE PLANS, REPRESENT THE BEST INFORMATION OBTAINABLE FOR THE DESIGN. THE CONTRACTOR WILL BE REQUIRED TO WORK AROUND EXISTING UTILITIES WITHIN THE RIGHT-OF-WAY WHICH DO NOT CONFLICT WITH PROPOSED CONSTRUCTION.
 - THE CONTRACTOR SHALL BE RESPONSIBLE FOR PRESERVING PROPERTY IRONS. THE CONTRACTOR WILL BE REQUIRED TO RE-ESTABLISH ANY PROPERTY IRONS WHICH ARE DAMAGED OR DESTROYED BY HIS CONSTRUCTION OPERATIONS. SUCH IRONS SHALL BE RE-ESTABLISHED BY A LICENSED LAND SURVEYOR IN ACCORDANCE WITH STATE LAWS. ALL COSTS FOR THIS WORK SHALL BE SUBSIDIARY TO THE LUMP SUM PRICE BID FOR "SITE RESTORATION".
 - CONTRACTOR SHALL PROVIDE POSITIVE DRAINAGE AWAY FROM ALL MANHOLE COVERS.
 - MANHOLES SHALL BE TYPE "P" MANHOLES. MANHOLES SHALL BE CONSTRUCTED IN ACCORDANCE WITH THE STANDARD SPECIFICATIONS AND THE STANDARD DETAIL DRAWINGS.
 - ALL LAWN/TURF AREAS DISTURBED BY CONSTRUCTION OF THE PROPOSED IMPROVEMENTS SHALL BE RESTORED WITH THE SAME GRASS/SOD AS EXISTING. RESTORATION OF DISTURBED AREAS SHALL INCLUDE, BUT NOT BE LIMITED TO, TOP SOIL PREPARATION, SEEDING, MULCH, AND/OR RESEEDING. ALL SEEDING/SODDING WORK SHALL BE IN ACCORDANCE WITH THE CITY OF WICHITA STANDARD SPECIFICATIONS AND THE CITY OF WICHITA ADMINISTRATIVE REGULATION NO. AR78 WHICH GOVERNS CLEANUP AND RESTORATION OR REPLACEMENT FOLLOWING CONSTRUCTION. ALL COSTS FOR THIS WORK SHALL BE SUBSIDIARY TO THE LUMP SUM PRICE BID FOR "SITE RESTORATION".
 - RUBBLE FROM THE REMOVAL OF MISCELLANEOUS STRUCTURES INCLUDING ANY TREES REMOVED, TREE TRIMMINGS, AND EXCESS EXCAVATION WHICH IS TO BE WASTED SHALL BE DISPOSED OF ON SITES PROVIDED BY THE CONTRACTOR. THESE SITES SHALL ALSO BE APPROVED BY THE ENGINEER AS TO SUITABILITY, APPEARANCE, AND SITE LOCATION. LOCATIONS THAT, IN THE OPINION OF THE ENGINEER, WILL LEAVE AN UNSIGHTLY APPEARANCE WILL NOT BE APPROVED. ALL DISPOSAL SITES MUST BE APPROVED BY THE KANSAS DEPARTMENT OF HEALTH AND ENVIRONMENT. MATERIAL EITHER STOCKPILED OR DISPOSED OF IN A FLOOD PLAIN WILL REQUIRE A KANSAS STATE BOARD OF AGRICULTURE PERMIT. ANY MATERIAL DUMPED IN WATERS OF THE UNITED STATES OR WETLANDS IS SUBJECT TO U.S. CORPS. OF ENGINEERS PERMITTING REGULATIONS. ANY MATERIAL BURIED OR STOCKPILED BEYOND APPROVED CONSTRUCTION LIMITS MAY REQUIRE ARCHAEOLOGICAL INVESTIGATIONS UNLESS BURIED IN A PREVIOUSLY APPROVED DISPOSAL LOCATION.
 - THE CONTRACTOR SHALL AVOID REMOVAL OR TRIMMING OF ANY TREES OR SHRUBS WHERE POSSIBLE. WHERE THE CONTRACTOR BELIEVES THE REMOVAL OR TRIMMING IS UNAVOIDABLE, HE SHALL COORDINATE SUCH WORK WITH THE ENGINEER. COSTS FOR TREE/SHRUB REMOVAL AND TRIMMING REGARDLESS OF SIZE SHALL BE CONSIDERED SUBSIDIARY TO THE LUMP SUM PRICE BID FOR "SITE CLEARING".
 - THE CONTRACTOR SHALL PREVENT ANY CONSTRUCTION DEBRIS FROM ENTERING THE EXISTING SANITARY SEWER DURING CONSTRUCTION.
 - THE CONTRACTOR SHALL GIVE ALL PROPERTY OWNERS AND/OR TENANTS OF DEVELOPED PROPERTY ADJUTING THE CONSTRUCTION OF THIS PROJECT A MINIMUM OF TEN (10) DAYS ADVANCE NOTICE PRIOR TO START OF CONSTRUCTION.
 - CONTRACTOR IS REQUIRED TO MAINTAIN CONTINUOUS FLOW OF SEWAGE IN EXISTING MAINS AT ALL TIMES.
 - THE CONTRACTOR SHALL SEED ALL AREAS DISTURBED BY CONSTRUCTION ACTIVITIES WITH TEMPORARY RYE GRASS. RYE GRASS SEED SHALL BE PLANTED AT A MINIMUM RATE OF SIX (6) POUNDS PER ONE THOUSAND (1,000) SQUARE FEET. THIS TEMPORARY SEEDING MAY BE OMITTED ONLY IF OTHER SEEDING IS REQUIRED IN ACCORDANCE WITH GENERAL NOTE NO. 9 ABOVE. TEMPORARY SEEDING OR PERMANENT SEEDING/SODDING SHALL BE APPLIED WITHIN 14 DAYS AFTER THE AREA HAS BEEN DISTURBED.
 - THE CONTRACTOR SHALL NOT BURY MANHOLES THAT HAVE RIM ELEVATIONS WHICH ARE LOWER THAN EXISTING GROUND AT THE MANHOLE. THE GROUND AROUND SUCH MANHOLES AND ALONG THE SEWER ALIGNMENT SHALL BE BACKFILLED TO THE APPROXIMATE ELEVATION OF THE PROPOSED GROUND ELEVATION SHOWN ON THE PLAN/PROFILE SHEETS. THE CONTRACTOR SHALL PROVIDE DRAINAGE AWAY FROM THESE MANHOLES AND SEWER LINES BY CONSTRUCTION OF TEMPORARY DITCHES OR SLOPING THE GROUND AS REQUIRED. ALL COSTS FOR THIS WORK SHALL BE CONSIDERED SUBSIDIARY TO THE INSTALLED BID PRICE FOR MANHOLES OR PIPE.
 - INTERURBAN TRAFFIC GENERATED OUTSIDE THE PROJECT AREA AND LOCAL BUSINESS OR RESIDENTIAL TRAFFIC GENERATED WITHIN THE PROJECT AREA ARE TO BE CARRIED THROUGH CONSTRUCTION AS FURTHER PROMULGATED BY PROJECT SPECIAL PROVISIONS.
 - THE CONTRACTOR SHALL SUBMIT AN APPLICATION TO THE KANSAS DEPARTMENT OF TRANSPORTATION (KDOT) FOR A "HIGHWAY PERMIT OF AGREEMENT" FOR "USE OF RIGHT-OF-WAY". COPIES OF THE KDOT APPROVED PERMIT SHALL BE DELIVERED TO THE ENGINEER PRIOR TO BEGINNING ANY WORK NEAR I-135 HIGHWAY. HIGHWAY PERMIT FEES, IF ANY, SHALL BE BORNE BY THE CONTRACTOR. PERMIT FORMS FOR THE PROJECT ARE AVAILABLE FROM THE KDOT OFFICE LISTED BELOW:
 KANSAS DEPARTMENT OF TRANSPORTATION
 3200 E. 45TH STREET N.
 WICHITA, KS 67220-1432
 (316)744-1271
 ROBERT H. RAYMOND - METRO UTILITY COORDINATOR
 - THE CONTRACTOR SHALL USE BEST MANAGEMENT PRACTICES (BMP'S) TO PREVENT ERODED SOIL FROM ENTERING DITCHES, STORM SEWERS, OR ANY OTHER DRAINAGE FEATURE. THE CITY OF WICHITA STANDARD DETAILS FOR SOIL EROSION BMP'S ARE A PART OF THIS SET OF PLANS AND ARE INTENDED TO PROVIDE GUIDELINES AS TO WHAT TYPE OF SOIL EROSION PROTECTION WILL BE INSTALLED DURING THE CONSTRUCTION PROCESS. THE CONTRACTOR SHALL BID THE PROJECT ACCORDINGLY. BMP'S SHALL BE MAINTAINED DURING THE CONSTRUCTION PROCESS BY THE CONTRACTOR. THE CONTRACTOR SHALL IMMEDIATELY REPAIR OR REPLACE ANY SOIL EROSION BMP'S DAMAGED OR DESTROYED DURING THE CONSTRUCTION PROCESS. ALL COSTS ASSOCIATED WITH THIS WORK SHALL BE SUBSIDIARY TO PROJECT COSTS.

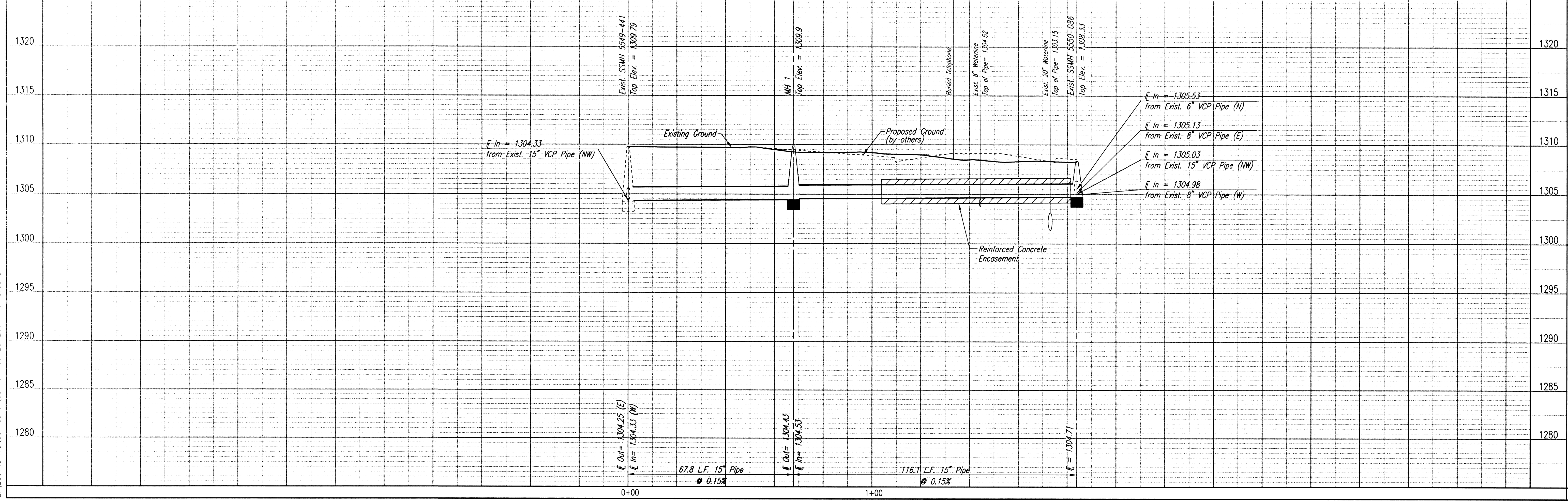
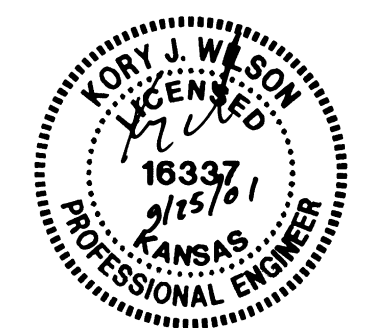
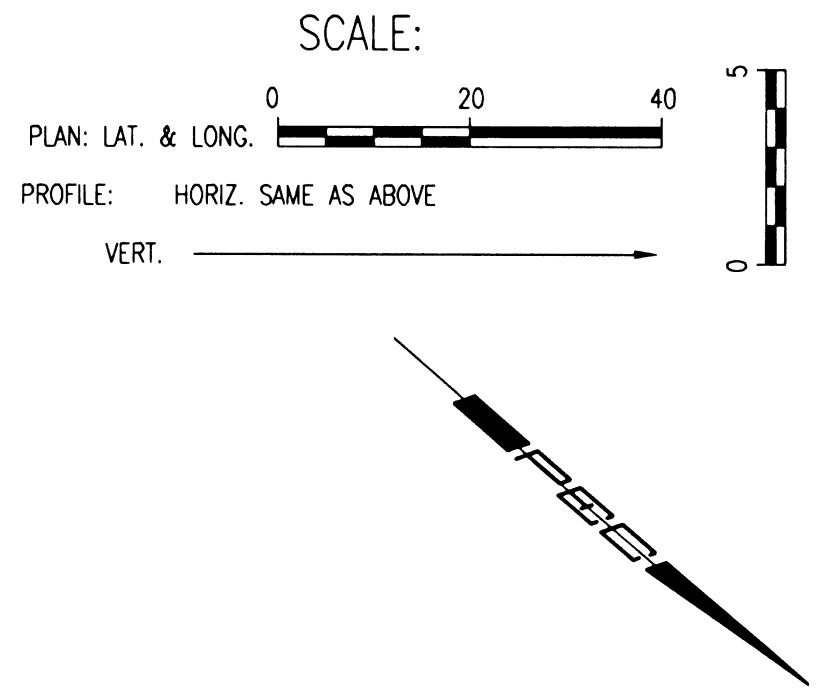
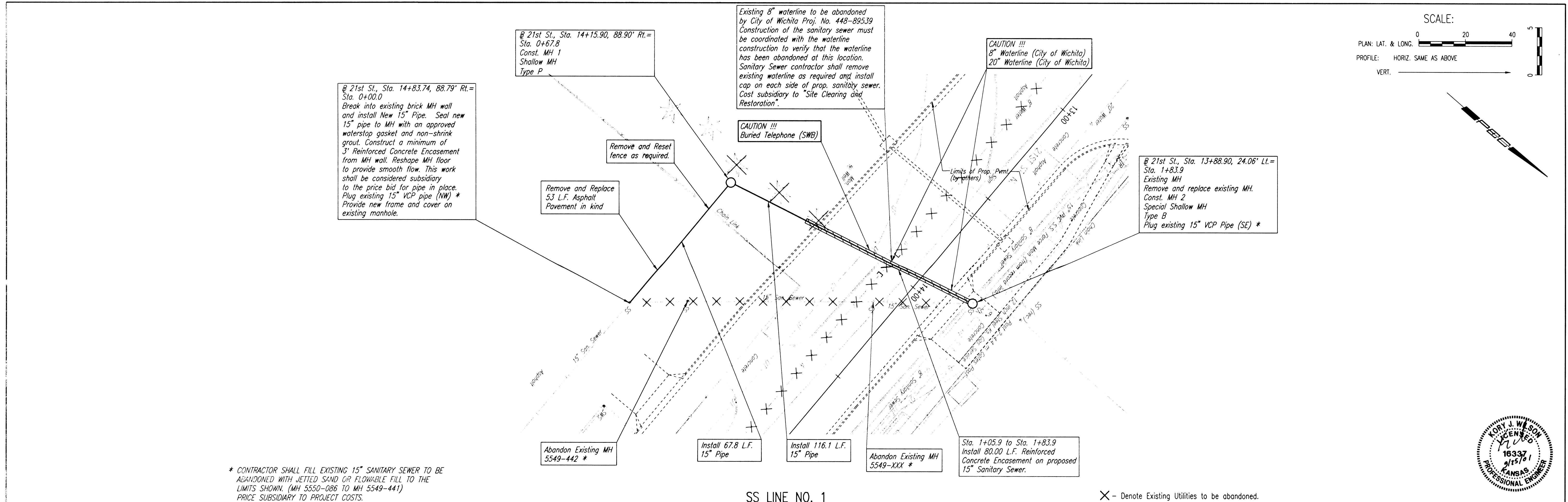


No.	Revision	By	Date
CITY OF WICHITA, KANSAS MICHAEL E. LINDEBAK, P.E. - CITY ENGINEER 21ST ST. N. & I-135 SANITARY SEWER RELOCATION KEY MAP AND GENERAL NOTES CITY OF WICHITA PROJECT NO. 468-83203 Professional Engineering Consultants, P.A. 303 S. TOPEKA • WICHITA, KANSAS 67202 316-262-2691 • FAX 316-262-3063			
Designed by	K/W	Job No.	34-01113-042
Drawn by	DAW	Date	July 2001
			Sht. 2 of 11

BY _____ DATE _____
 CHECKED _____
 PLAN

BY _____ DATE _____
 CHECKED _____
 PROFILE

DSNR, K.W. OPER: DAW SCALE: 1"=20.00'
 C:\2001\01113\Sewer\SSPP01 09-25-2001 10:49:36 am



CITY OF WICHITA, KANSAS
 MICHAEL E. UNDERK, P.E. - CITY ENGINEER

21ST ST. N. & I-135 SANITARY SEWER RELOCATION

SS LINE NO. 1

CITY OF WICHITA PROJECT NO. 468-83203

Professional Engineering Consultants, P.A.
 303 S. TOPEKA - WICHITA, KANSAS 67202
 316-262-2691 • FAX 316-262-3003

Designed By: K.W. DAW
 Drawn By: DAW

Job No. 34-01113
 Date July 2001

Sheet 4 of 11