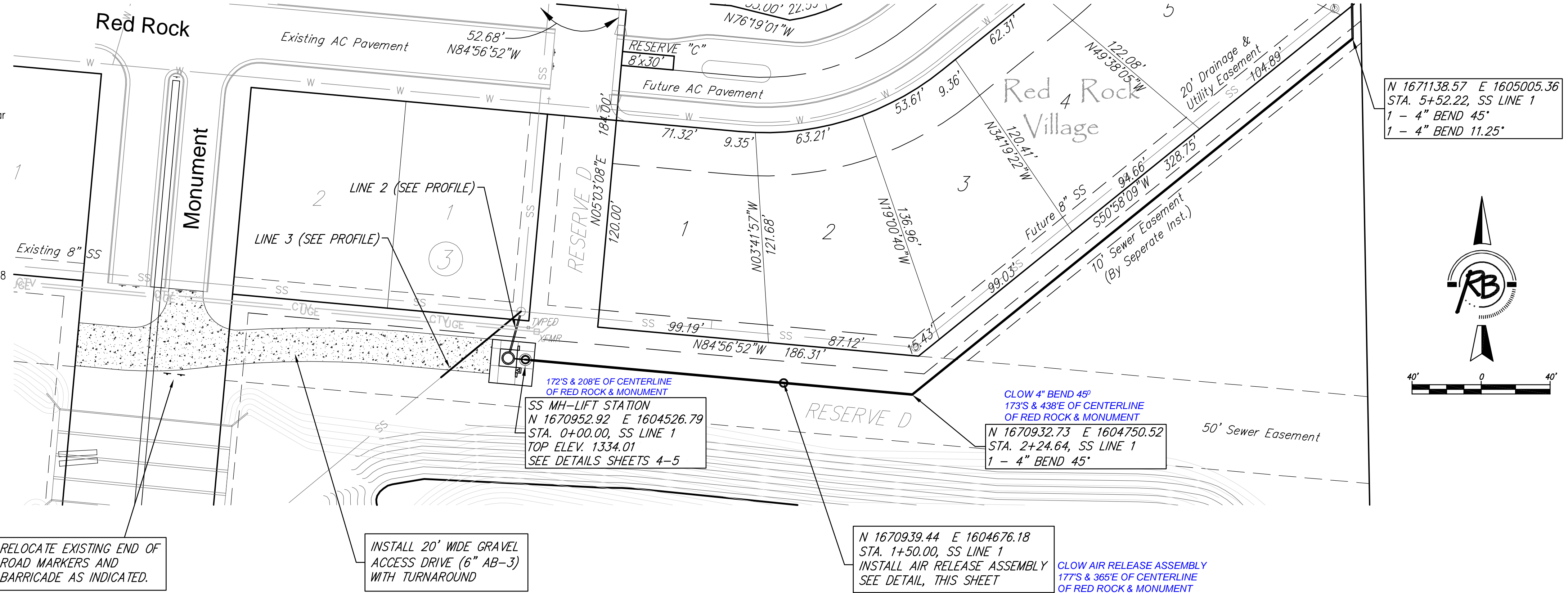


**SEWER FORCE MAIN
AIR RELEASE ASSEMBLY DETAIL**

Contractor shall include 2 wraps of mastic or rubber gaskets (natural or synthetic) at each joint in the manhole. Provide exterior bituminous coating. (One coat Valspar high-build Bituminous coating 35-J-10, or Theneck 46-450 Heavy Theneckol or approved equal).



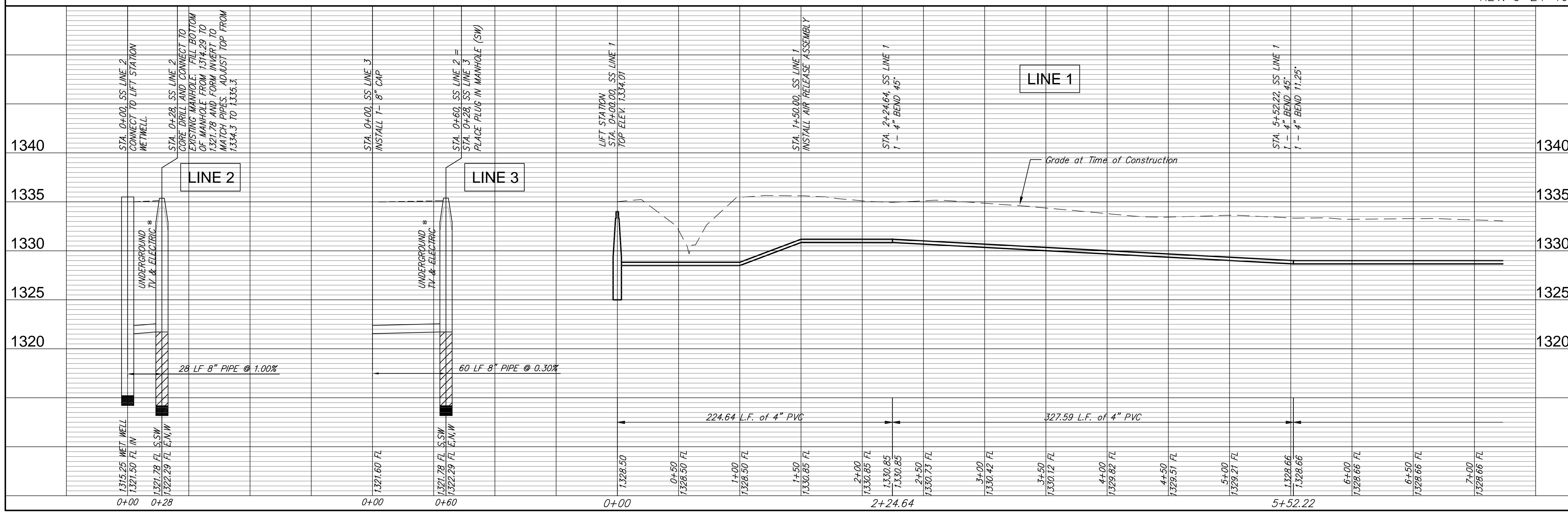
RELOCATE EXISTING END OF ROAD MARKERS AND BARRICADE AS INDICATED.

INSTALL 20' WIDE GRAVEL ACCESS DRIVE (6" AB-3) WITH TURNAROUND

N 1670939.44 E 1604676.18 STA. 1+50.00, SS LINE 1
INSTALL AIR RELEASE ASSEMBLY SEE DETAIL, THIS SHEET

CLOW AIR RELEASE ASSEMBLY 177'S & 365'E OF CENTERLINE OF RED ROCK & MONUMENT

REV. 5-24-10



REVISED
DRAWN
DESIGN
PROJECT NUMBER
468-84227
DRAWING FILE
liftstationbase (plan 1)

Kugler & Bohm, P.A.
Engineers, Surveyors, Land Planners
524 North Main
Wichita, Kansas 67202
www.kuglerandbohm.com

DATE
Feb. 23, 2010

REVIEW

UTILITY

RB JOB
2927X
SHEET
2
OF
8

SOUTHWEST PASSAGE ADDITION
FORCE MAIN PLAN/PROFILE
WICHITA, KANSAS