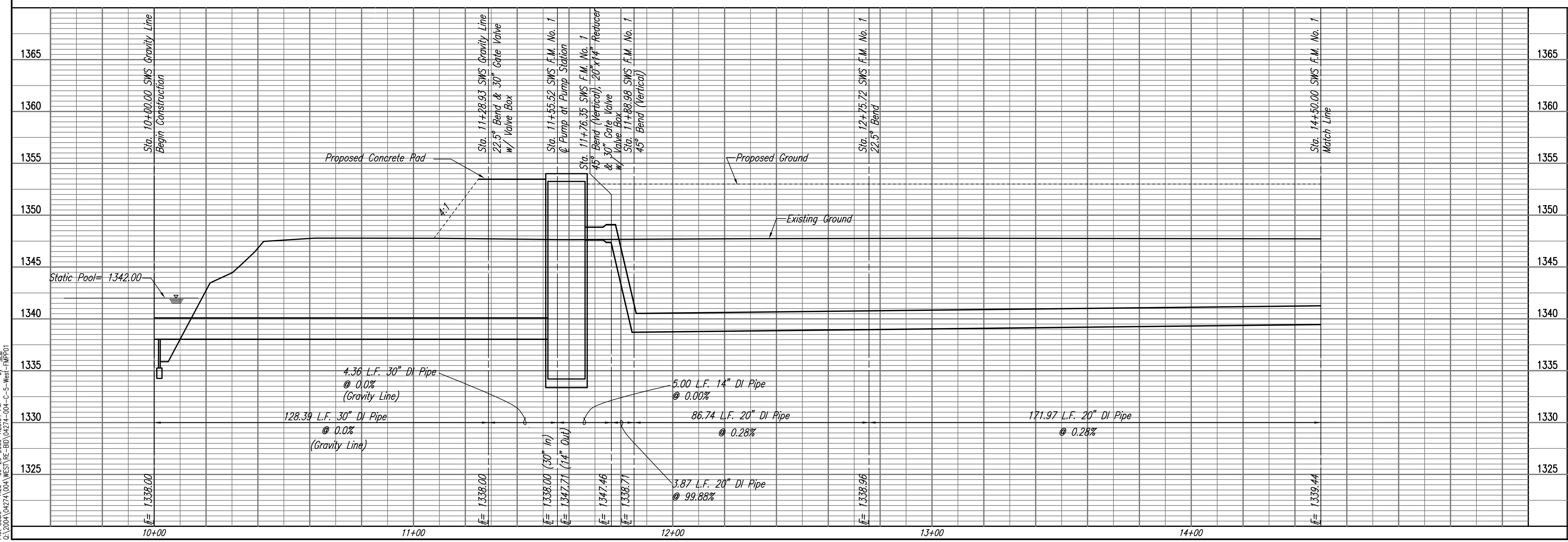


* Grading Operations shall be adequate for the installation of the Transformer (by others). Coordinate with Westar, see Sheet No. 9 for contact information.



Saved: 09-29-2009 11:16:26 AM by: CAE
 Plot Scale: 1/20 09-29-2009 12:35:04 PM
 CA:\2009\04274\004\WEST\RE-BD\04274-004-C-5-West-FMP101

Professional Engineering Consultants, P.A.
 893 S. TOPKA AVENUE, WICHITA, KANSAS 67202
 316-262-2691 • FAX 316-262-3003

Designed By: E.J. SCU
 Drawn By: CAE

Job No.: 35-04274-042
 Date: SEPTEMBER 2009

PHASE II - STORM WATER DRAIN #332
 WEST STORM WATER SEWER
 LINE NO. 1

JAMES L. ARMOUR, P.E. - CITY ENGINEER
 CITY OF WICHITA PROJECT NO. 468-64396

Sheet 5 of 63