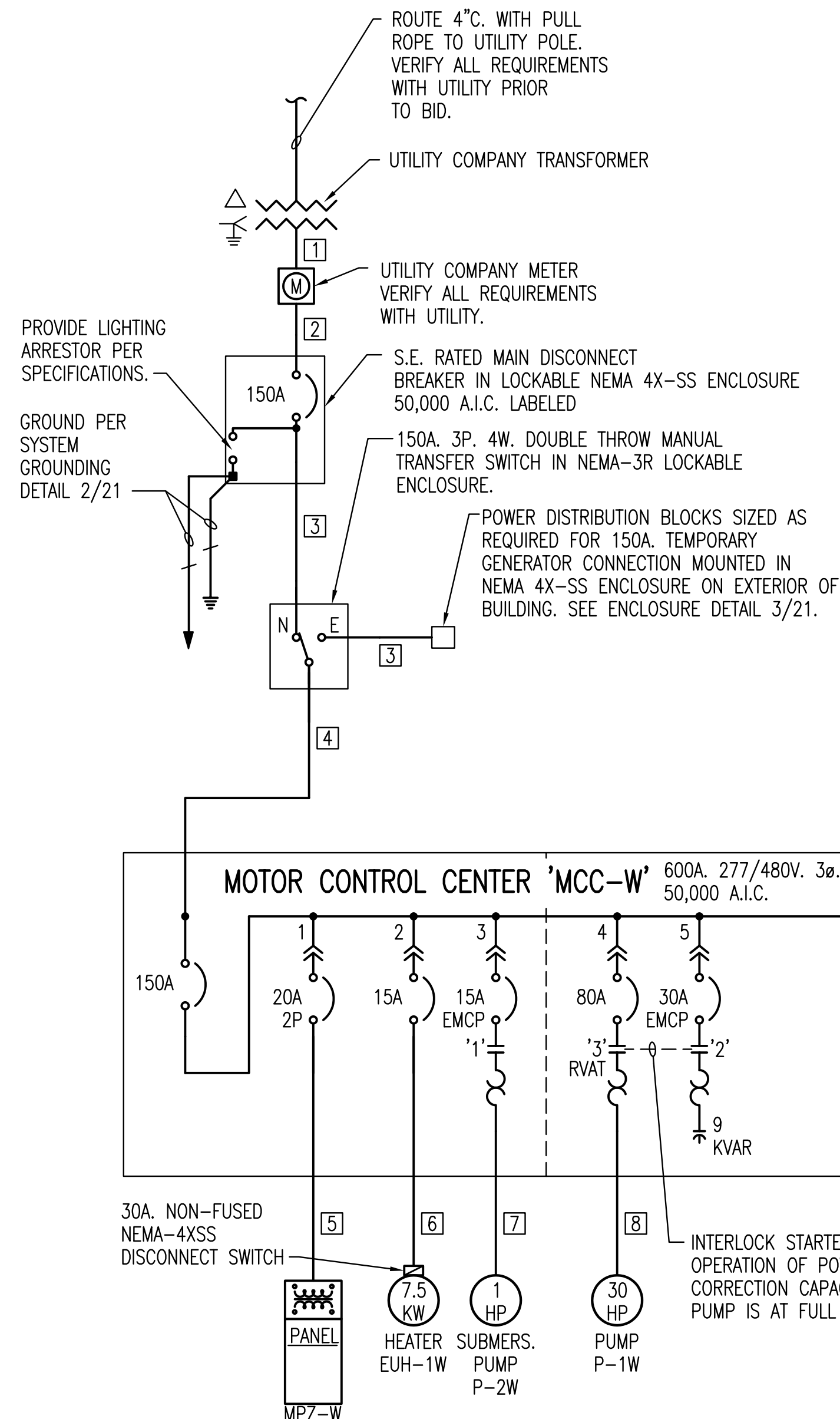


FEEDER SCHEDULE

DESIG.	EQUIPMENT SERVED	CONDUCTORS			GROUND SIZE PER SET	CONDUIT SIZE PER SET
		SETS	NO.	SIZE		
1	UTILITY METER	1	4	#3/0 AWG CU.	--	4" C.
2	SERVICE DISCONNECT	1	4	#3/0 AWG CU.	--	4" C.
3	MANUAL TRANS. SWITCH	1	4	#3/0 AWG CU.	#6	2" C.
4	MTR. CTL. CTR. 'MCC-W'	1	4	#3/0 AWG CU.	#6	2" C.
5	PANEL 'MPZ-W'	1	2	#12 AWG CU.	#12	3/4" C.
6	UNIT HEATER 'EUH-1W'	1	3	#12 AWG CU.	#12	3/4" C.
7	PUMP 'P-2W'	1	3	#12 AWG CU.	#12	3/4" C.
8	PUMP 'P-1W'	1	3	#3 AWG CU.	#8	1-1/4" C.

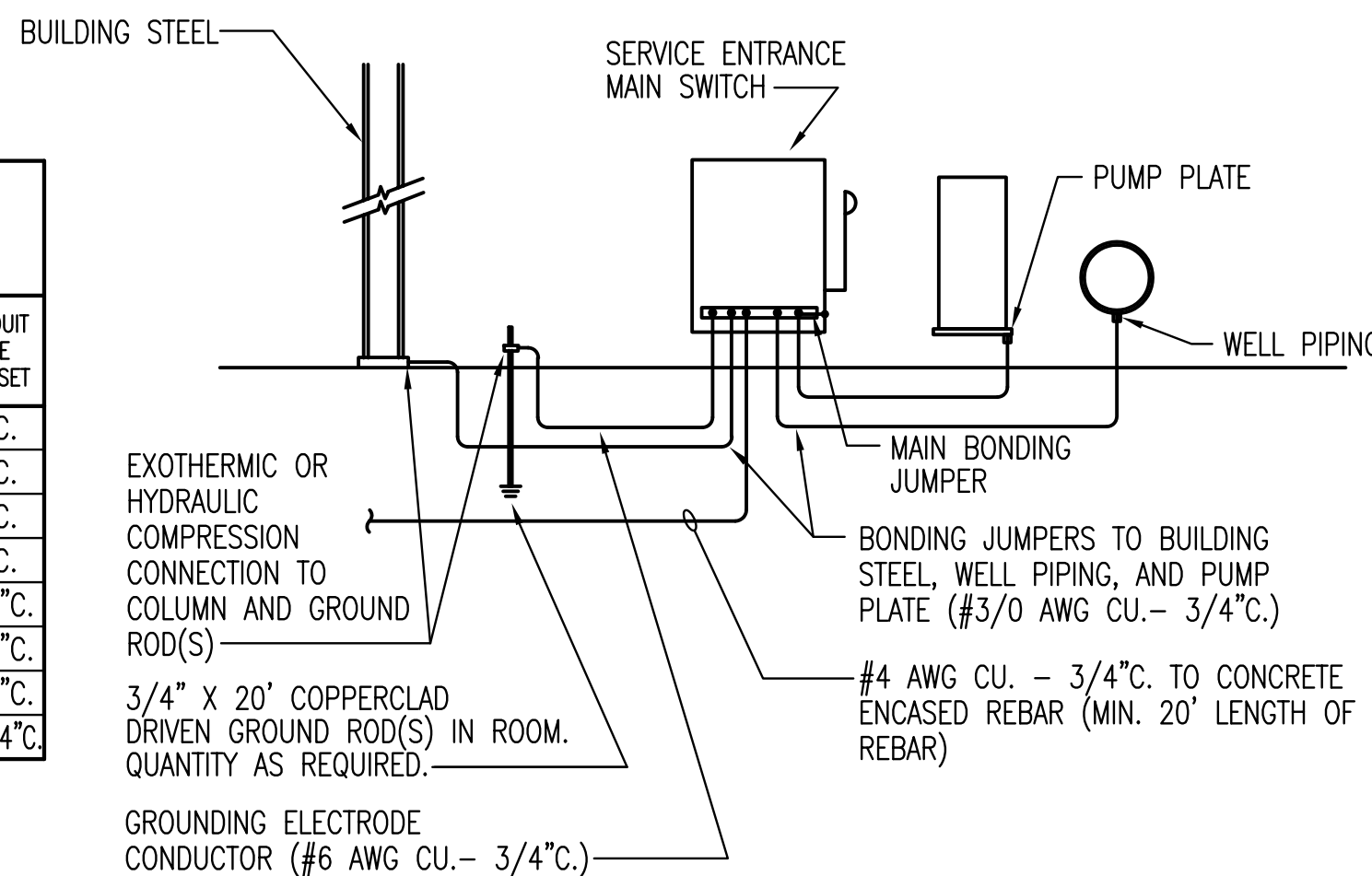


ELECTRICAL ONE-LINE DIAGRAM

NO SCALE

GENERAL ONE-LINE DIAGRAM NOTES:

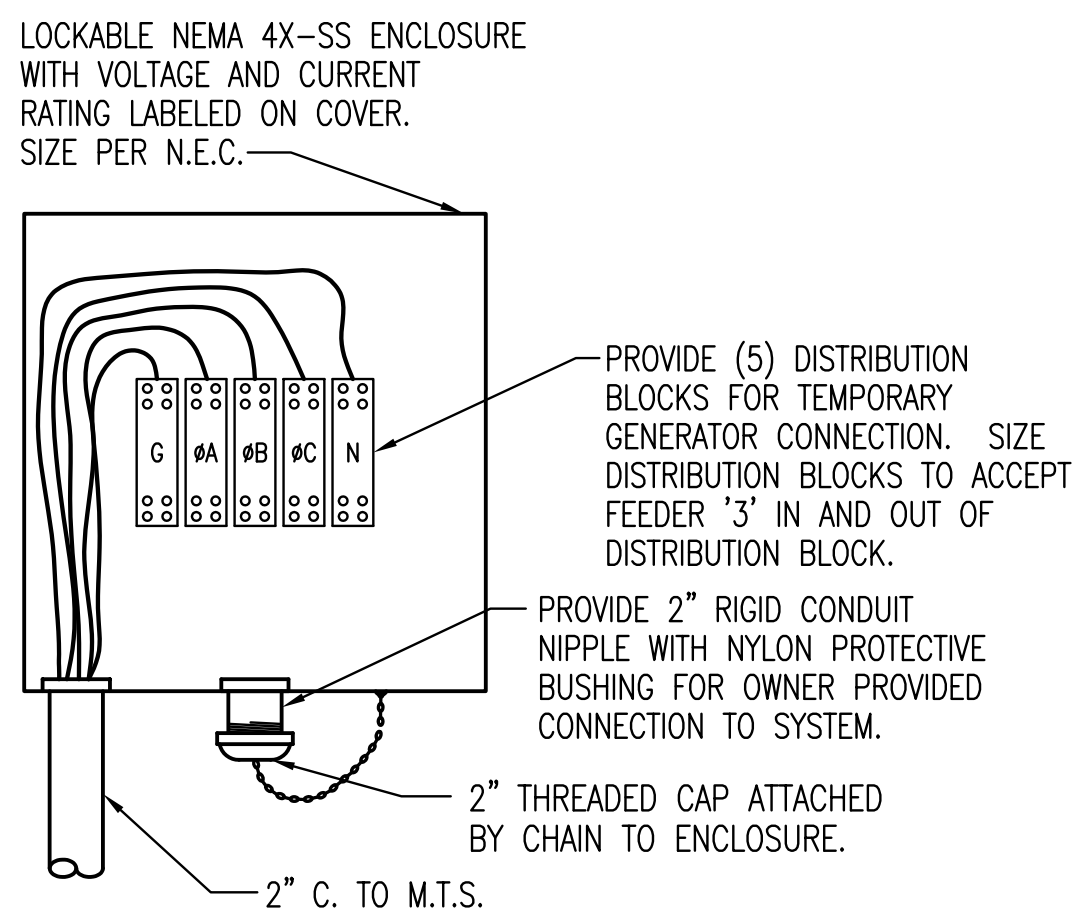
- UNLESS OTHERWISE NOTED, ALL CIRCUIT BREAKERS AND/OR SWITCHES ARE THREE POLE.
- EMCP = ELECTRONIC MOTOR CIRCUIT PROTECTOR
- RVAT = REDUCED VOLTAGE AUTO-TRANSFORMER



NOTES: 1. PROVIDE OTHER GROUNDING CONNECTIONS AS SPECIFIED IN N.E.C. ARTICLE 250.50.(2005)

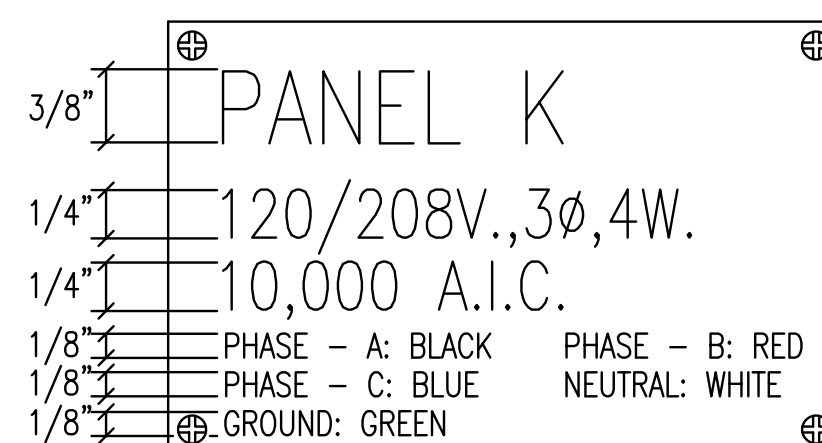
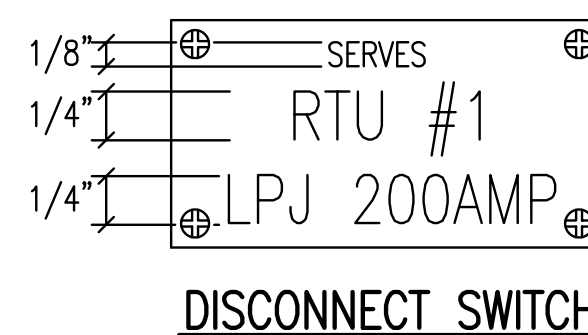
SYSTEM GROUNDING DETAIL

NO SCALE



TEMPORARY GENERATOR CONNECTION ENCLOSURE

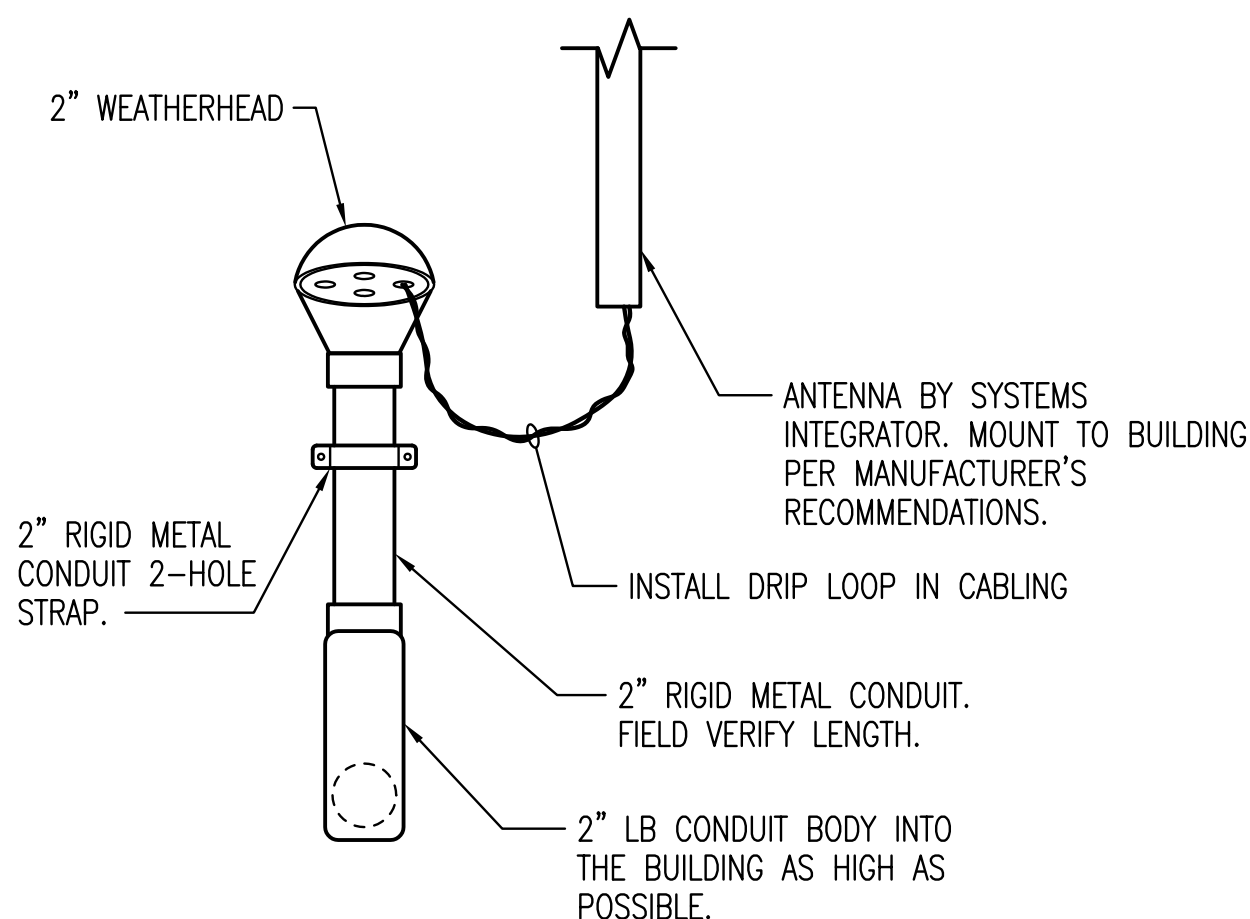
NO SCALE



BRANCH CIRCUIT/DISTRIBUTION PANEL

TYPICAL NAME PLATES

NO SCALE



ANTENNA RISER DETAIL

NO SCALE

LIGHTING FIXTURE SCHEDULE

(P.E.C.)

FIXT. LTR.	MANUFACTURER CATALOG NUMBER	MANUFACTURER CATALOG NUMBER	MANUFACTURER CATALOG NUMBER	MANUFACTURER CATALOG NUMBER	DESCRIPTION	LAMP TYPE	REMARKS	W	L	D
CJ	WILLIAMS 92-4-132-A-WET/1	COLUMBIA LU4-132-EBB-PAF	LITHONIA DMW-132-WLF-PAF	METALUX V72-132DR-WL	4' WET LABEL	F32/835	WHITE	.6771	4.333	
EC	DUAL LITE LM54-H7554	HIGH-LITES RL-9-19	LITHONIA ELT125-W-MT-H3512	SURE-LITES XR-9	EMERGENCY FIXT	12W TUNGSTEN HALOGEN	ENCLOSED AND GASKETED		.75	1
RD3	KIM WD14D3/42PL	INVUE VWS-42-CF-3S-BZ	LITHONIA ASW1-42TR1-SR3-DBBT		WALL DIRECTOR	42W T1/35K 4-PIN GLASS LENS	SEALED LEAD CALCIUM BATTERY	1.08	1.22	.74

- LIGHT FIXTURES SHALL BE PROVIDED WITH ELECTRONIC BALLASTS. COMPACT FLUORESCENT ELECTRONIC BALLASTS SHALL HAVE END-OF-LIFE PROTECTION CIRCUIT TO PREVENT WELDING OF LAMPS IN SOCKETS OR LAMP BREAKAGE. SEE THE SPECIFICATIONS. ALL FLUORESCENT LAMPS SHALL BE LOW MERCURY AND SHALL MEET ALL E.P.A. GUIDELINES FOR PASSING 'TCLP' TESTS. ALL INDOOR FLUORESCENT BALLASTS SHALL HAVE A DISCONNECTING MEANS MEETING THE REQUIREMENTS OF N.E.C. (2005) ARTICLE 410.73(G), EXCEPT FOR THOSE INSTALLED IN CORD-AND-PLUG CONNECTED FIXTURES.
- MANUFACTURERS LISTED IN THIS SCHEDULE OR APPROVED BY WRITTEN ADDENDUM WILL BE THE ONLY APPROVED MANUFACTURERS TO BID THE LIGHTING FIXTURES FOR THIS PROJECT. CONTRACTORS AND SUPPLIERS USING PRICING FROM MANUFACTURERS NOT LISTED ON SCHEDULE OR BY ADDENDUM DO SO AT THEIR OWN RISK.
- LIGHT FIXTURE SELECTIONS ARE BASED ON THE MANUFACTURER IN THE LEFT MOST COLUMN AS LISTED IN THE SCHEDULE. FIXTURES APPROVED AS EQUALS IN THIS SCHEDULE OR BY ADDENDUM SHALL BE EQUAL TO THE UNIT SPECIFIED IN THE LEFT MOST COLUMN, IE: SPRING LOADED LATCHES, POST PAINTED FINISH, AND PHOTOMETRICS.

GENERAL NOTES

- ALL ELECTRICAL WORK SHALL COMPLY WITH THE LATEST EDITION OF THE NATIONAL ELECTRICAL CODE (NEC) & THE AMERICANS WITH DISABILITIES ACT (ADA).
- REFER TO RELATED ARCHITECTURAL, MECHANICAL, AND STRUCTURAL DRAWINGS FOR RELATED INFORMATION.
- REFER TO THE SPECIFICATIONS FOR DATA NOT ON THE DRAWINGS.
- E.C. SHALL REFER TO MECHANICAL DRAWINGS AND SPECIFICATIONS FOR THE REQUIREMENTS ASSOCIATED WITH WIRING AND CONNECTION OF INTERLOCKING AND CONTROLS OF MECHANICAL UNITS AND THERMOSTAT LOCATIONS.
- COORDINATE OUTLET BOX LOCATIONS WITH MASONRY TO MINIMIZE CUTTING OF BRICK OR BLOCK.
- ALL MOUNTING HEIGHTS TO CENTERLINE OF ITEM UNLESS OTHERWISE NOTED. VERIFY ALL OUTLET LOCATIONS ON THE JOB PRIOR TO ROUGH-IN.
- CONDUIT RUN W/CONDUCTORS AS INDICATED & GROUND WIRE SIZED PER N.E.C. 250.122. CONDUIT SIZE AS REQUIRED.
- WHEN INCREASED CONDUCTOR SIZES ARE SHOWN ON THE PLANS, THE LARGER CONDUCTOR SIZE SHALL BE USED THROUGHOUT THE LENGTH OF THE CIRCUIT, INCLUDING NEUTRAL AND GROUND.

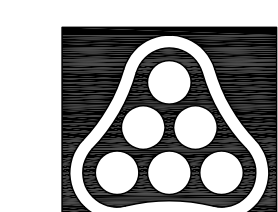
SYMBOL LIST

SYMBOL	DESCRIPTION	MOUNTING
(A)	LIGHT FIXTURE & FIXTURE LETTER	WALL
(A)	LIGHT FIXTURE & FIXTURE LETTER	WALL
(E) (B) (3) (4)	EMERGENCY BATTERY LIGHT FIXTURE	CEIL./WALL
(K) (S) (P) (4)	SWITCHES (1-POLE, 2-POLE, 3-WAY, 4-WAY)	46" AFF
(K) (S) (P)	SWITCHES (KEYED, PILOT)	46" AFF
WP	WEATHERPROOF	
AFF	ABOVE FINISHED FLOOR	
UNON	UNLESS OTHERWISE NOTED	
(G)	DUPLEX GROUNDED RECEPTACLE	17" AFF
(G)	GROUND FAULT DUPLEX RECEPTACLE	17" AFF
(S)	SPECIAL DEVICE (AS NOTED)	
(J)	JUNCTION BOX	
(F)	FUSIBLE BUS #SSY	
(A)	BRANCH CIRCUIT PANEL & PANEL DESIG.	72" TO TOP
(E)	ELECTRICAL DISTRIBUTION EQUIPMENT	
(1)	FEEDER DESIGNATION	
(C) (12) (12) (GRD.) (1/2) (C.) (GEN) (NOTE) (16)	CONDUIT RUN 2#12 & 1#12 GRD.-1/2" C. GEN NOTE 16	CEIL./WALL
(C) (12) (12) (GRD.) (3/4) (C.) (GEN) (NOTE) (16)	CONDUIT RUN 2#12 & 1#12 GRD.-3/4" C. GEN NOTE 16	EARTH/FLOOR
(C) (12) (12) (GRD.) (3/4) (C.) (GEN) (NOTE) (16)	CONDUIT RUN 2 CIRCUITS, 3#12 & 1#12 GRD.-3/4" C. GEN NOTE 16	EARTH/FLOOR
(C) (12) (12) (GRD.) (3/4) (C.) (GEN) (NOTE) (16)	CONDUIT RUN PARTIAL CIRCUIT	
(C) (12) (12) (GRD.) (3/4) (C.) (GEN) (NOTE) (16)	SEE GENERAL NOTE 7 & 8	
(C) (12) (12) (GRD.) (3/4) (C.) (GEN) (NOTE) (16)	CONDUIT RUN TWO (2) CIRCUITS	CEIL./WALL
(C) (12) (12) (GRD.) (3/4) (C.) (GEN) (NOTE) (16)	PHASE CONDUCTORS (#12 UNON)	
(C) (12) (12) (GRD.) (3/4) (C.) (GEN) (NOTE) (16)	NEUTRAL CONDUCTOR (#12 UNON)	
(C) (12) (12) (GRD.) (3/4) (C.) (GEN) (NOTE) (16)	SWITCH LEGS (#12 UNON)	
(C) (12) (12) (GRD.) (3/4) (C.) (GEN) (NOTE) (16)	GROUND CONDUCTOR (#12 UNON)	
(M)	MAN-DOWN CONTACT	
(FS)	FLOAT SWITCH	
(PT)	PRESSURE TRANSDUCER	
(PT)	PRESSURE TRANSDUCER (RECEIVER)	
(C) (12) (12) (GRD.) (3/4) (C.) (GEN) (NOTE) (16)	DISCRETE CONTROL CABLE (# OF PAIRS)	CEIL./WALL
(C) (12) (12) (GRD.) (3/4) (C.) (GEN) (NOTE) (16)	ANALOG CONTROL CABLE (# OF SHIELDED PAIRS)	CEIL./WALL
(H)	EMERGENCY HORN (EXTERIOR)	96" AFF
(L)	EMERGENCY LIGHT (EXTERIOR)	96" AFF
(D)	INTRUSION DETECTION	CEILING

TRANSFORMER: MPZ-W		240/120 VOLTS, 1 PHASE, 3 WIRE		30 AMP MAIN BKR, WALL MTD.		18000 AIC LABELED	
CIRC NO.	LOAD V. A.	LOAD TYPE	LOAD DESCRIPTION	AMP SIZE	LOAD TYPE	LOAD V. A.	CIRC NO.
1	470	LTG	LIGHTING	20	A	20	1
3	600	RCV	CONV. RECEPTACLES	20	B	20	1
5	1200	EMER	EMERGENCY LIGHT/HORN	200	4		
7		SPARE					
9		SPARE					
11		SPARE					

PANEL TO BE 5 KVA SQUARE D MINI POWER-ZONE OR APPROVED EQUAL WITH A 20A, 2P, 480V. PRIMARY BREAKER AND A 30A, 2P, 240V. SECONDARY BREAKER.

ADDENDUM #5		NSM	8/27/09
No.	Revision	By	Date
PHASE II - STORM WATER DRAIN #332 ELECTRICAL ONE-LINE DIAGRAM & SCHEDULES WEST PUMP STATION JAMES L. ARMOUR, P.E. - CITY ENGINEER CITY OF WICHITA PROJECT NO. 468-84396 Professional Engineering Consultants, P.A. 303 S. TOPEKA • WICHITA, KANSAS 67202 316-262-2691 • FAX 316-262-3003			
Designed by	RDB	Job No.	35-04274-042
Drawn by	NSM	Date	SEPTEMBER 2009



Saved: 09-25-2009 10:06:38 AM by NSM
 Plot Scale: 1:24 09-29-2009 4:33:16 PM
 \\Net_Scal_151\local_data\Drawings\DWG\2004\04274\04274-004 - 21 - WEST - ONE LINE AND SCHEDULES