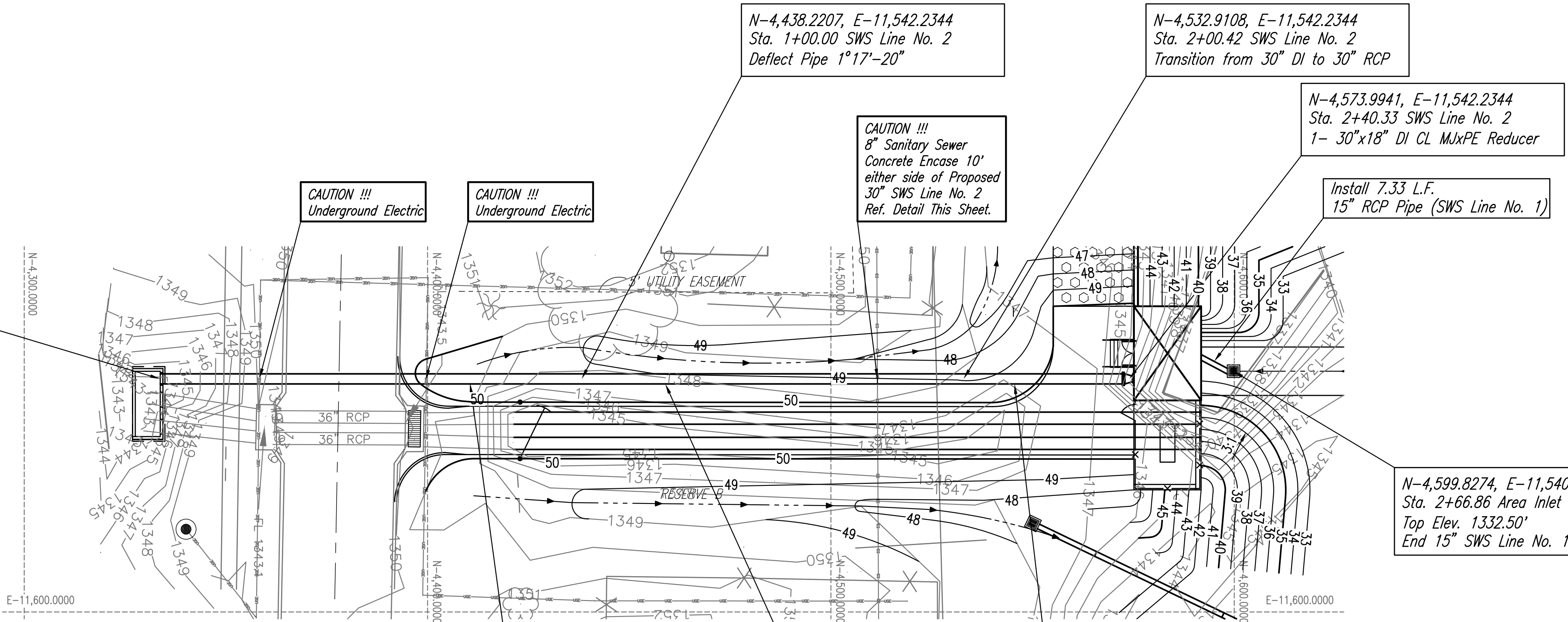


N-4,333.7143, E-11,542.2344
Sta. 0+00.00, SWS Line No. 2
Construct Headwall
Ref. Detail, Sht. 39
Begin 30" SWS Line No. 2



N-4,438.2207, E-11,542.2344
Sta. 1+00.00 SWS Line No. 2
Deflect Pipe 1°17'-20"

N-4,532.9108, E-11,542.2344
Sta. 2+00.42 SWS Line No. 2
Transition from 30" DI to 30" RCP

N-4,573.9941, E-11,542.2344
Sta. 2+40.33 SWS Line No. 2
1- 30"x18" DI CL MjxPE Reducer

Install 7.33 L.F.
15" RCP Pipe (SWS Line No. 1)

N-4,599.8274, E-11,540.3292
Sta. 2+66.86 Area Inlet
Top Elev. 1332.50'
End 15" SWS Line No. 1

CAUTION !!!
Underground Electric

CAUTION !!!
Underground Electric

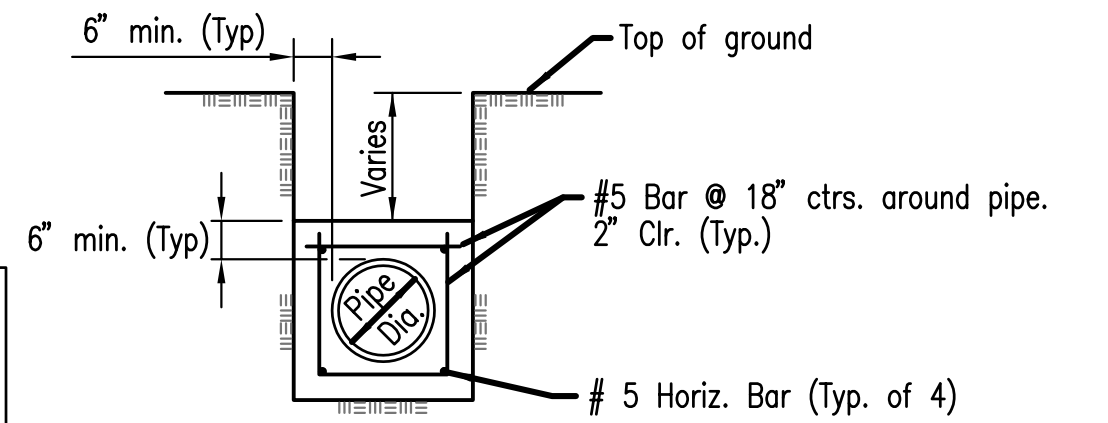
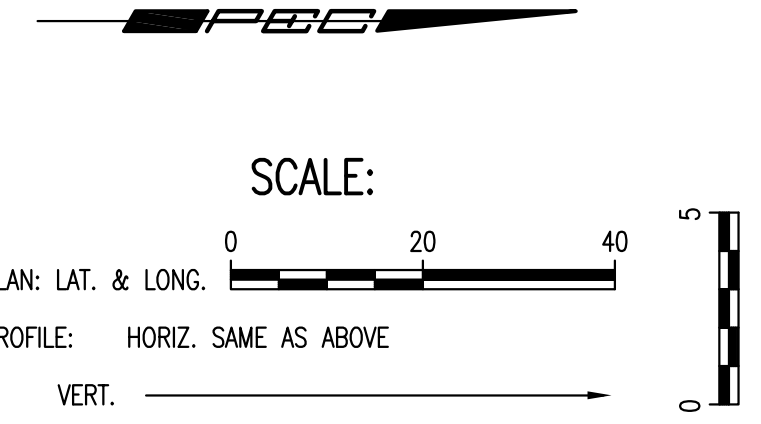
CAUTION !!!
8" Sanitary Sewer
Concrete Encase 10'
either side of Proposed
30" SWS Line No. 2
Ref. Detail This Sheet.

Install 104.51 L.F.
30" RCP Pipe

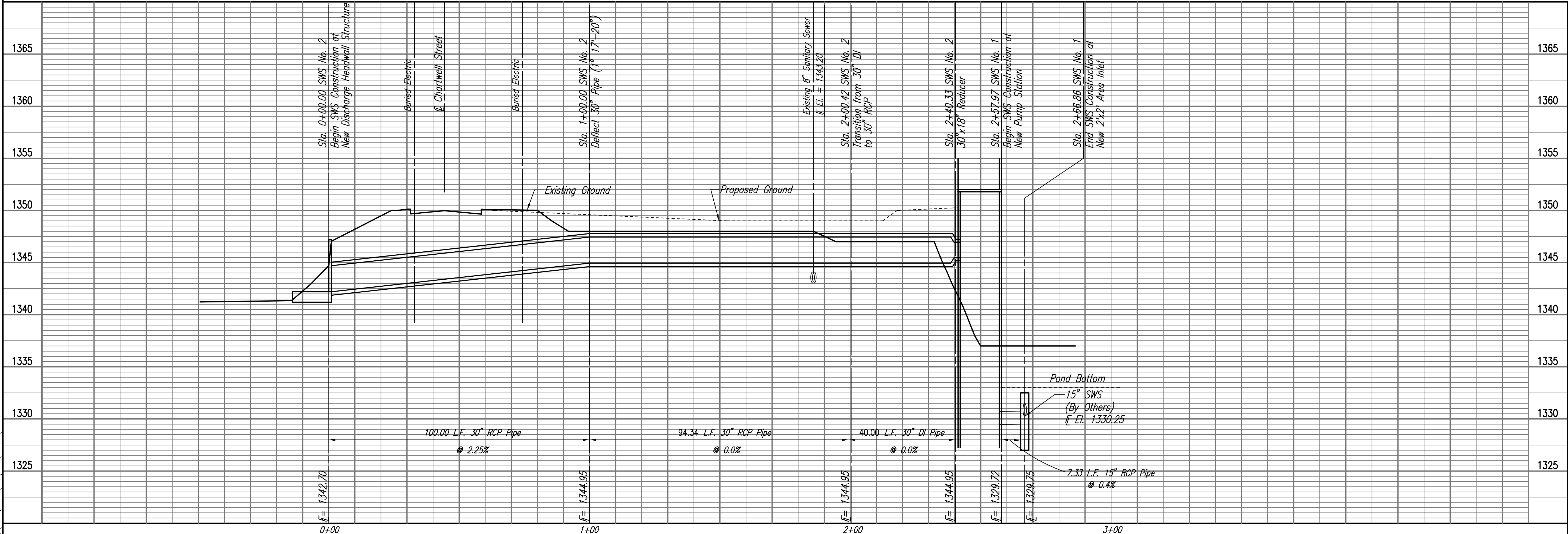
Install 94.34 L.F.
30" RCP Pipe

Install 40 L.F.
30" DI Pipe

- Notes::
- Grading Operations shall be adequate for the installation of the Transformer (by others). Coordinate with Westar, see Sheet No. 38 for contact information.
 - Line No. 2 shall be rubber and steel joint RCP per AWWA C302. Adapters and fittings as required.



EAST STORM WATER SEWER LINE NO. 1 AND STORM WATER SEWER LINE NO. 2



PHASE II - STORM WATER DRAIN #332
EAST STORM WATER SEWER
LINE NO. 1 AND LINE NO. 2
JAMES L. ARMOUR, P.E. - CITY ENGINEER
CITY OF WICHITA, PROJECT NO. 468-84396

Professional Engineering Consultants, P.A.
303 S. DOUGLAS - WICHITA, KANSAS 67202
316-262-2691 • FAX 316-262-2693

Designed By: E.J.J. SCU
Drawn By: CAE

Job No. 35-04274-042
Date: SEPTEMBER 2009

Sheet 31 of 63

Scale: 09-09-09 11:07:30 AM by CJE
Plot: Sep 13 09:29:20 1:38:49 PM by CJE
C:\2009\04274\004\WESTAR\RE-BID\04274-042-C-31-East-LINE1&2