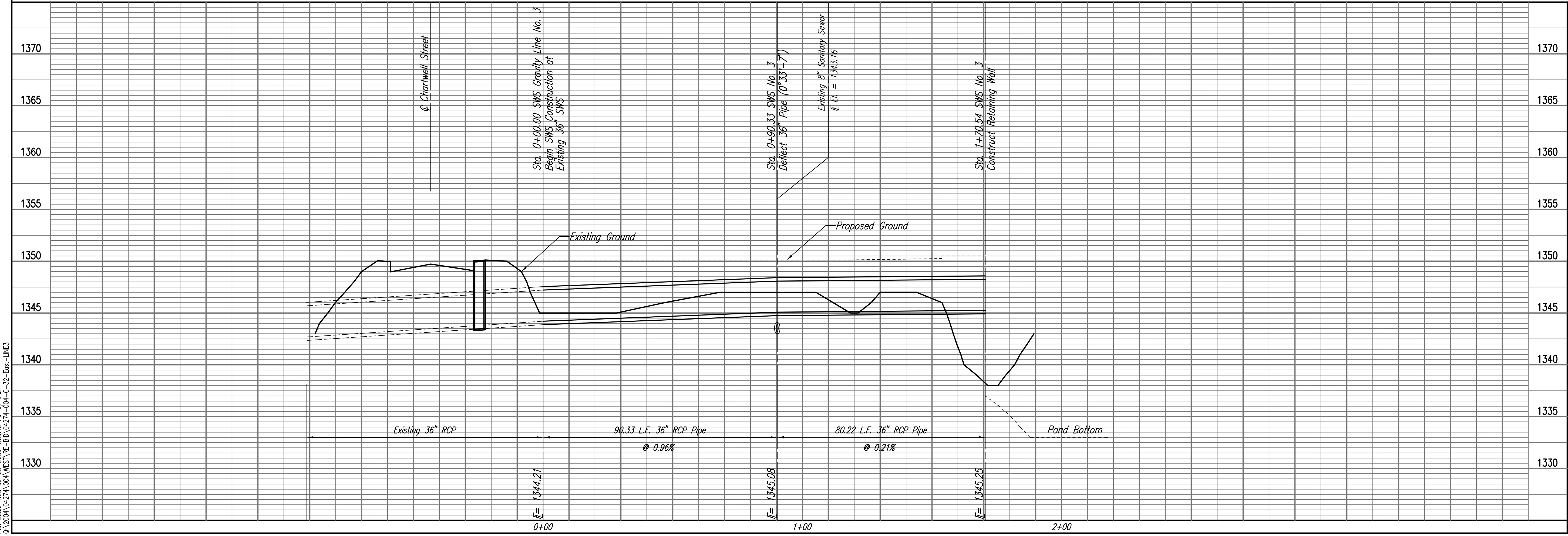


PRIOR TO BEGINNING CONSTRUCTION, THE CONTRACTOR SHALL EXCAVATE THE EXISTING 36" RCP AT STATION 0+00.00 TO VERIFY ITS HORIZONTAL AND VERTICAL LOCATION. THE PIPE LOCATION SHALL BE REPORTED TO THE ENGINEER SO THAT ANY NECESSARY PLAN MODIFICATIONS CAN BE MADE.

EAST STORM WATER SEWER GRAVITY LINE NO. 3



Professional Engineering Consultants, P.A.
 803 S. TOPKA AVENUE, WICHITA, KANSAS 67202
 316-262-2691 • FAX 316-262-3003

Designed By: EAJ, SCU
 Drawn By: CAE

Job No.: 35-04274-042
 Date: SEPTEMBER 2009

PHASE II - STORM WATER DRAIN #332
 EAST STORM WATER SEWER
 GRAVITY LINE NO. 3
 JAMES L. ARMOUR, P.E. - CITY ENGINEER
 CITY OF WICHITA, PROJECT NO. 468-64396

Sheet 32 of 63

Save: 09-29-2009 11:27:12 AM by CAE
 Plot Scale: 1/20 09-29-2009 1:38:19 PM by CAE
 CA:\2009\04274\004\WEST\RE-BID\04274-004-C-32-East-LINE3