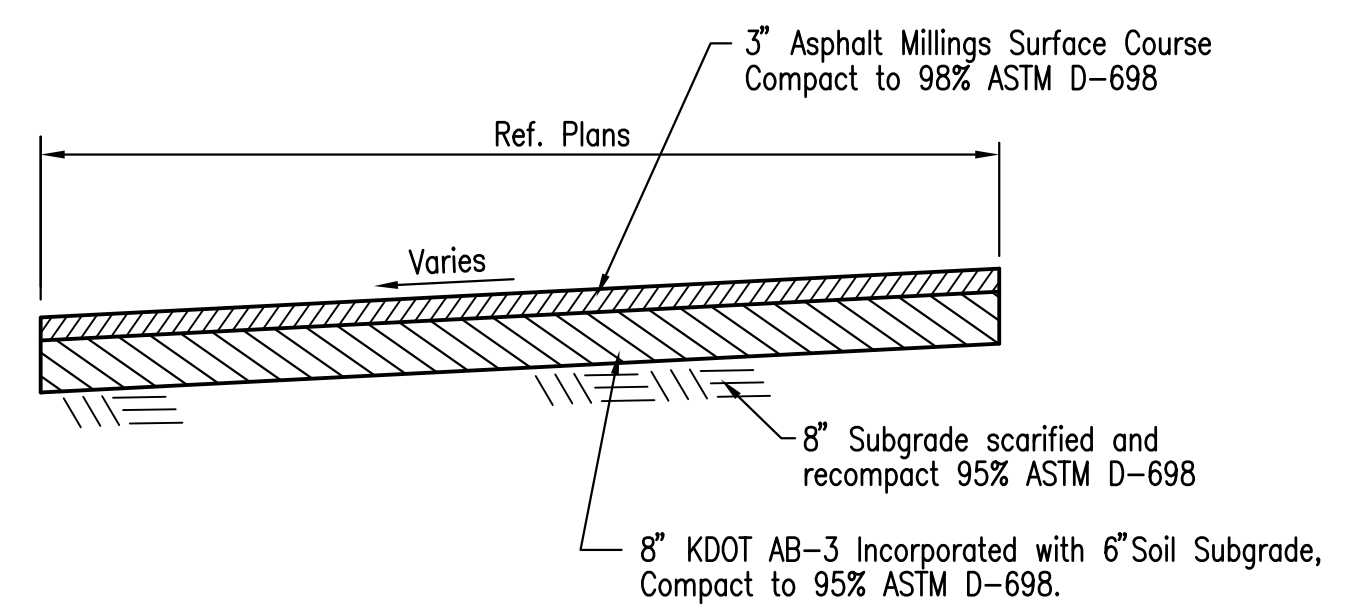


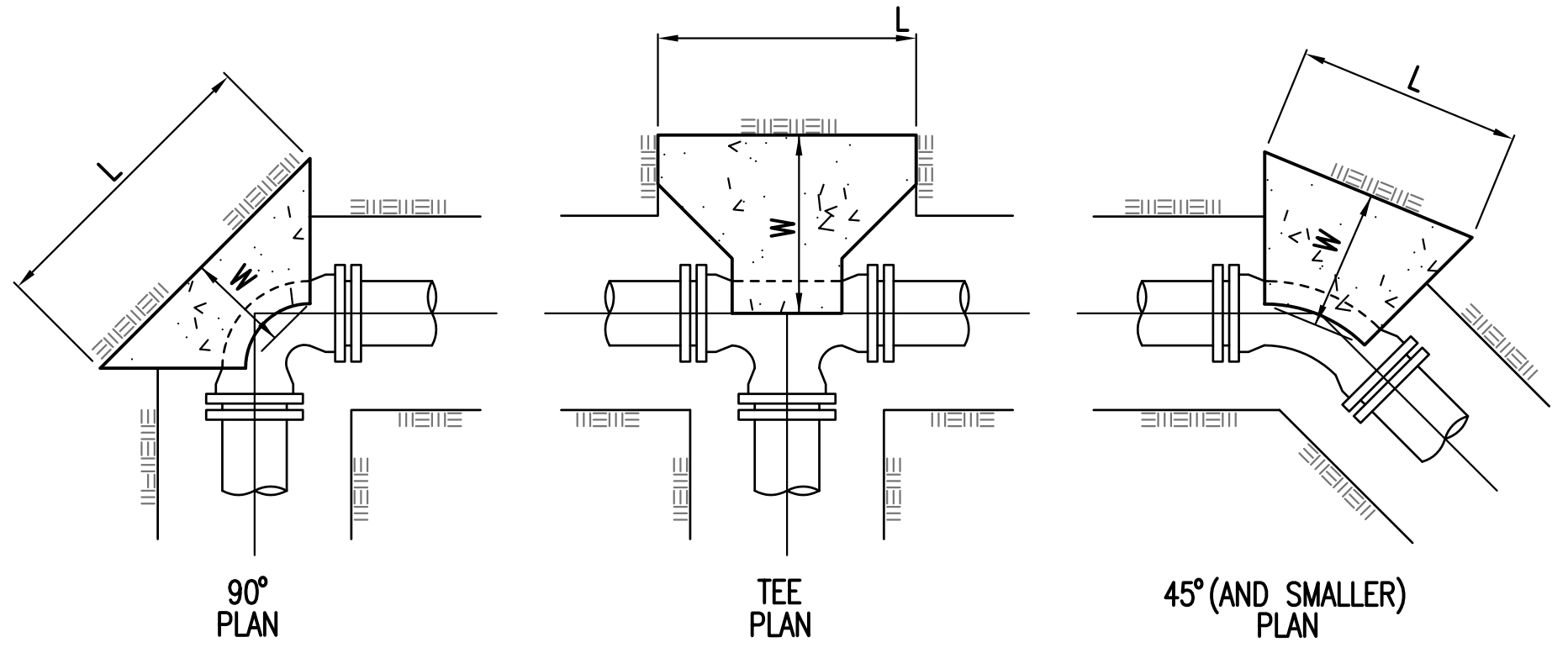
VALVE BOX DETAIL

NOTE: ONE VALVE STEM REQUIRED FOR EACH BURIED VALVE
NO SCALE



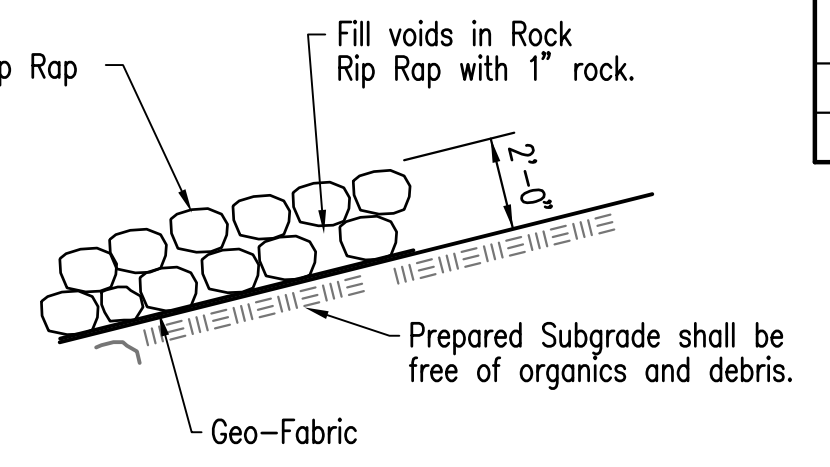
TYPICAL ASPHALT MILLINGS ACCESS RAMP SECTION

NOT TO SCALE



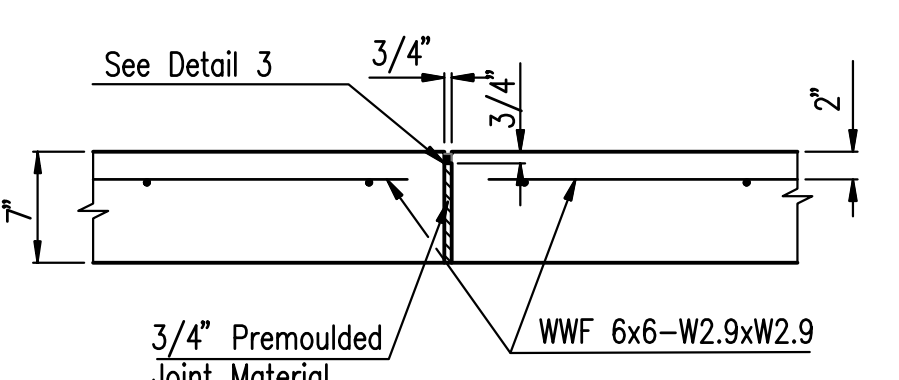
FORCE MAIN THRUST BLOCK DETAILS

THRUST BLOCK SCHEDULE				
LINE SIZE	FITTINGS & ANGLE	DIM. L	DIM. W	DIM. H
30	45°	6'-6"	6'-6"	4'-6"
30	TEE	7'-0"	7'-0"	4'-6"

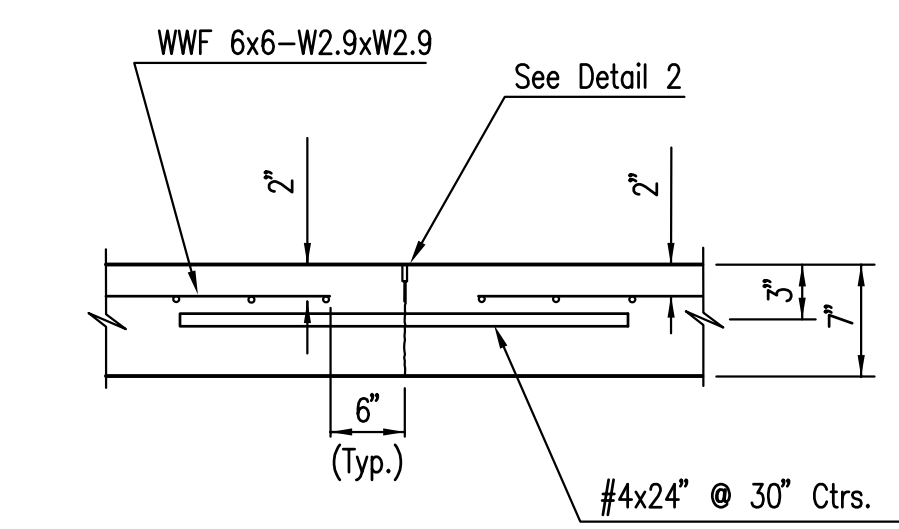


LIGHT TYPE ROCK RIP RAP

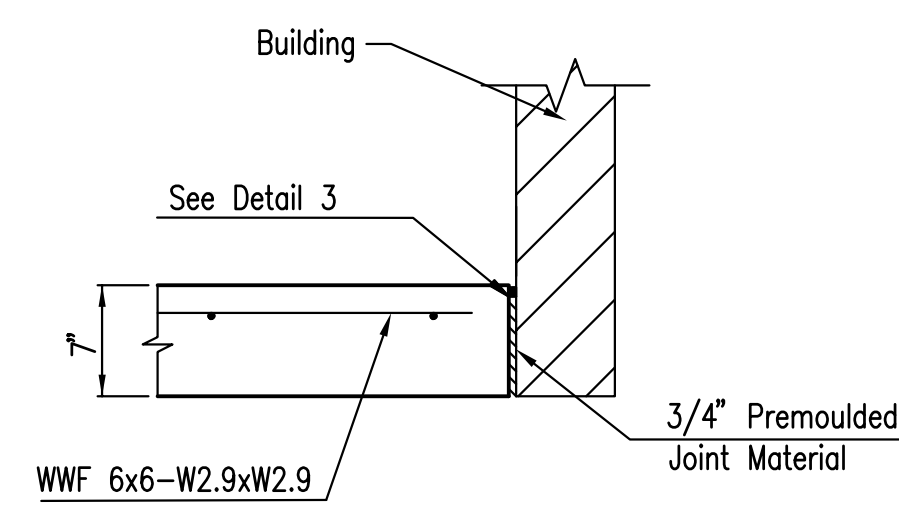
NO SCALE



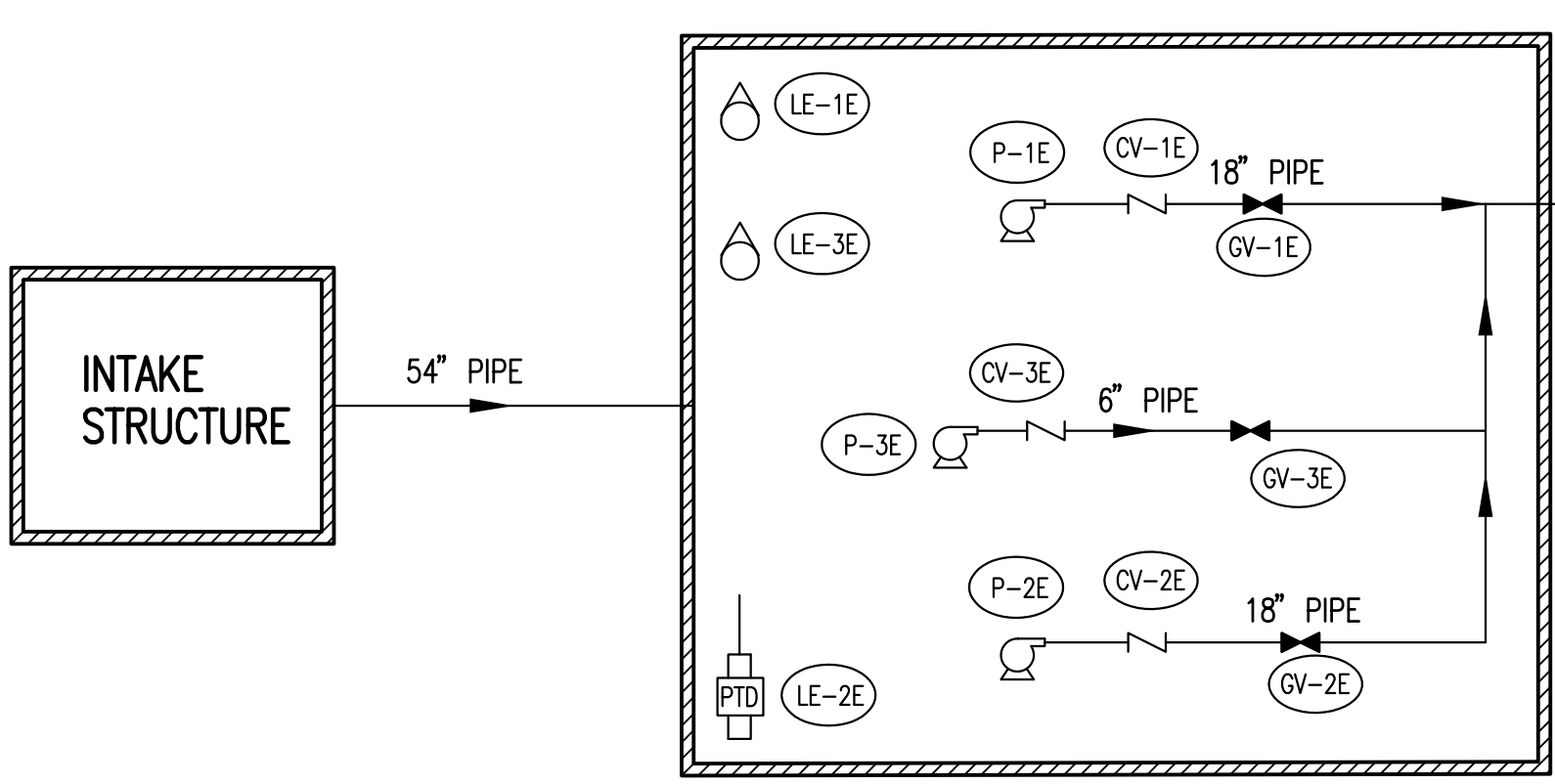
ISOLATION JOINT (IJ)



**SAW JOINT (SJ)
TYPE F (TIED)
TYPE FU (UNTIED)**



ISOLATION JOINT (IJ)

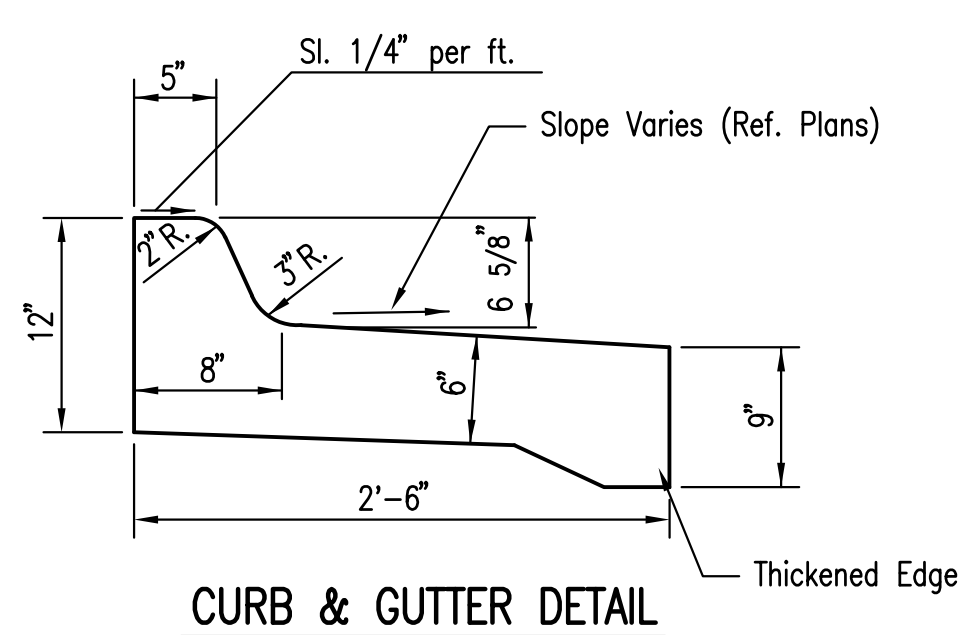


PUMP STATION

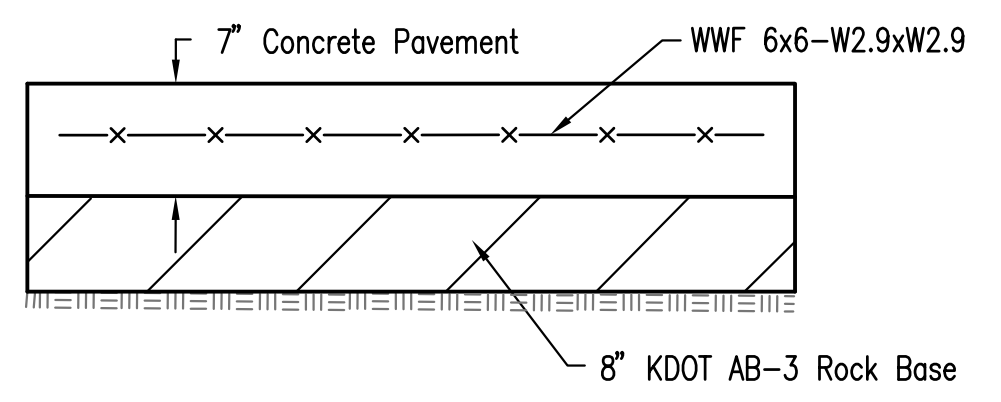
PROCESS DIAGRAM

NOT TO SCALE

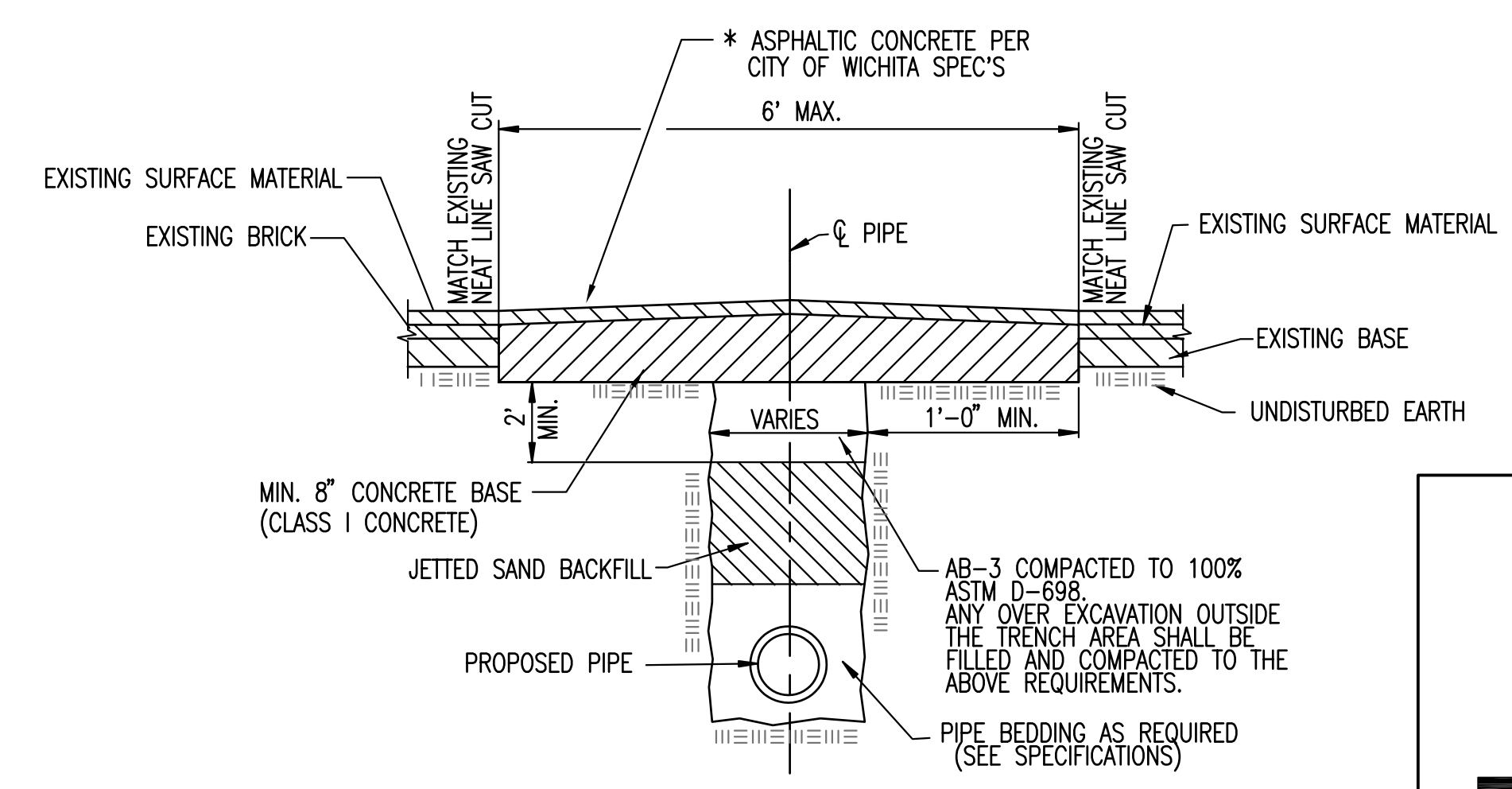
LEGEND	
	CHECK VALVE
	GATE VALVE
	PUMP
	FLOAT SWITCH
	PRESSURE TRANSDUCER
	PROPOSED PIPE
	DIRECTION OF FLOW
	PROPOSED STRUCTURE WALL
	REDUCING FITTING



CURB & GUTTER DETAIL



TYPICAL CONCRETE PAVEMENT SECTION



CHARTWELL STREET PAVEMENT REMOVAL AND REPLACEMENT

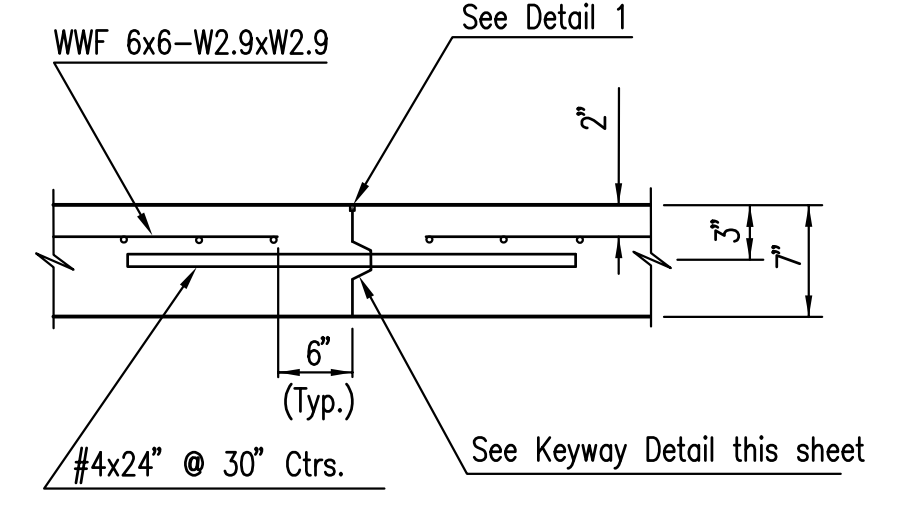
PUMP SCHEDULE						
MARK	TYPE	GPM	FT. HEAD	EFF. %	MAX. HP	RPM
P-1E	MIXED FLOW	7,500	21	80% MIN.	60	1200
P-2E	MIXED FLOW	7,500	21	80% MIN.	60	1200
P-3E	SUBMERSIBLE	500	21	63% MIN.	5	1160

LEVEL ELEMENT SCHEDULE				
MARK	LOCATION	STATUS	TYPE	SPECIFICATION SECTION
LE-1E	PUMP STATION	NEW	FLOAT SWITCH	17585
LE-2E	PUMP STATION	NEW	SUBMERSIBLE PRESSURE TRANSDUCER	17581
LE-3E	PUMP STATION	NEW	FLOAT SWITCH	17585

GATE VALVE SCHEDULE						
MARK	LOCATION	STATUS	SIZE	FITTINGS	OPERATOR	SPECIFICATION SECTION
GV-1E	PUMP STATION	NEW	18"	MJ	2" NUT W/ VALVE BOX	17261
GV-2E	PUMP STATION	NEW	18"	MJ	2" NUT W/ VALVE BOX	17261
GV-3E	PUMP STATION	NEW	6"	MJ	2" NUT W/ VALVE BOX	17261

PUMP STATION NOTES

- THE CONTRACTOR SHALL COORDINATE WITH WESTAR TO EXTEND ELECTRICAL SERVICE TO THE LIFT STATION SITE. THE CONTRACTOR SHALL VERIFY THE ELECTRICAL SERVICE REQUIREMENTS WITH WESTAR. THE CONTRACTOR SHALL ALLOW 2 WEEKS FOR WESTAR TO PROVIDE SERVICE. ALL COSTS INCURRED TO EXTEND SERVICES TO THE SITE SHALL BE BORNE BY THE CONTRACTOR. THE CONTRACTOR SHALL CONTACT:
WESTAR
ATTN: CAROLYN PROPHET
P.O. BOX 208
WICHITA, KS. 67201
PH (316) 261-6734
- CONTRACTOR SHALL SUPPORT ALL PIPING INSIDE THE WET WELL AS REQUIRED.
- ALL HARDWARE WITHIN THE PUMP STATION THAT IS REQUIRED FOR COMPLETE CONSTRUCTION OF THE PUMP STATION (CONNECTION PLATES, BRACKETS, BOLTS, ETC.) SHALL BE STAINLESS STEEL.
- CONTRACTOR SHALL LOCATE LEVEL CONTROL SO FUTURE FLOW INTO THE WET WELL WILL NOT INTERFERE WITH WET WELL OPERATION.
- THE COMPLETED DISCHARGE LINE SHALL BE PRESSURE TESTED IN ACCORDANCE WITH CITY OF WICHITA STANDARD SPECIFICATIONS FOR WATERLINE CONSTRUCTION AT 100 PSI.
- ALL PIPING, AS REQUIRED SHALL MEET THE REQUIREMENTS OF THE CITY OF WICHITA STANDARD SPECIFICATIONS FOR WATERLINE CONSTRUCTION. ALL EXPOSED D.I. PIPE AND FITTINGS SHALL BE FACTORY PRIMED AND EPOXY COATED WITH 2 COATS OF TNEPEC SERIES 66, OR APPROVED EQUAL.
- PUMP SHALL BE AS MANUFACTURED BY CASCADE OR APPROVED EQUAL.
- COMPACTION OF EARTHWORK BELOW WET WELL SHALL BE PER CITY OF WICHITA STANDARD SPECIFICATIONS.
- THE "CONFINED SPACE WARNING" SIGN SHALL BE FASTENED TO THE TOP OF ALL VAULTS. THE SIGN MAY BE FASTENED TO THE VAULT LID IF IT DOES NOT IMPEDE ACCESS TO THE HANDLE. ACCEPTABLE MATERIALS: ALUMINUM 73415HH, PLASTIC 73439HH, OR S.A. VINYL 73463HH.
- PROVIDE (1) PORTABLE, HEAVY DUTY, ADJUSTABLE ALUMINUM GANTRY CRANE; 2,000 LBS. CAPACITY; MAXIMUM SPAN OF 8'; MINIMUM OVERALL HEIGHT OF 6'; AS MANUFACTURED BY VESTIL OR APPROVED EQUAL. PROVIDE (1) TWO-SPEED ELECTRIC CHAIN HOIST; 2,000 LBS. CAPACITY WITH LIFT HEIGHT OF 15 FT; AS MANUFACTURED BY DAYTON OR APPROVED EQUAL.



**CONSTRUCTION JOINT
TYPE E (TIED)
TYPE EU (UNTIED)**

No.	Revision	By	Date
PHASE II - STORM WATER DRAIN #332 EAST PUMP STATION DETAILS JAMES L. ARMOUR, P.E. - CITY ENGINEER CITY OF WICHITA PROJECT NO. 468-84396 Professional Engineering Consultants, P.A. 303 S. TOPKA • WICHITA, KANSAS 67202 316-262-2691 • FAX 316-262-3003 Designed by EJJ, SCU Job No. 35-04274-042 Sht. 38 of 63 Drawn by CAE Date SEPTEMBER 2009			

Sheet 09-29-2009 11:30:08 AM by CAE
 Plot Scale 1:1 09-29-2009 14:25:05
 C:\2004\04274\004\WESTA\RE-BID\04274-004-C-38-East-Pump Sta Detail