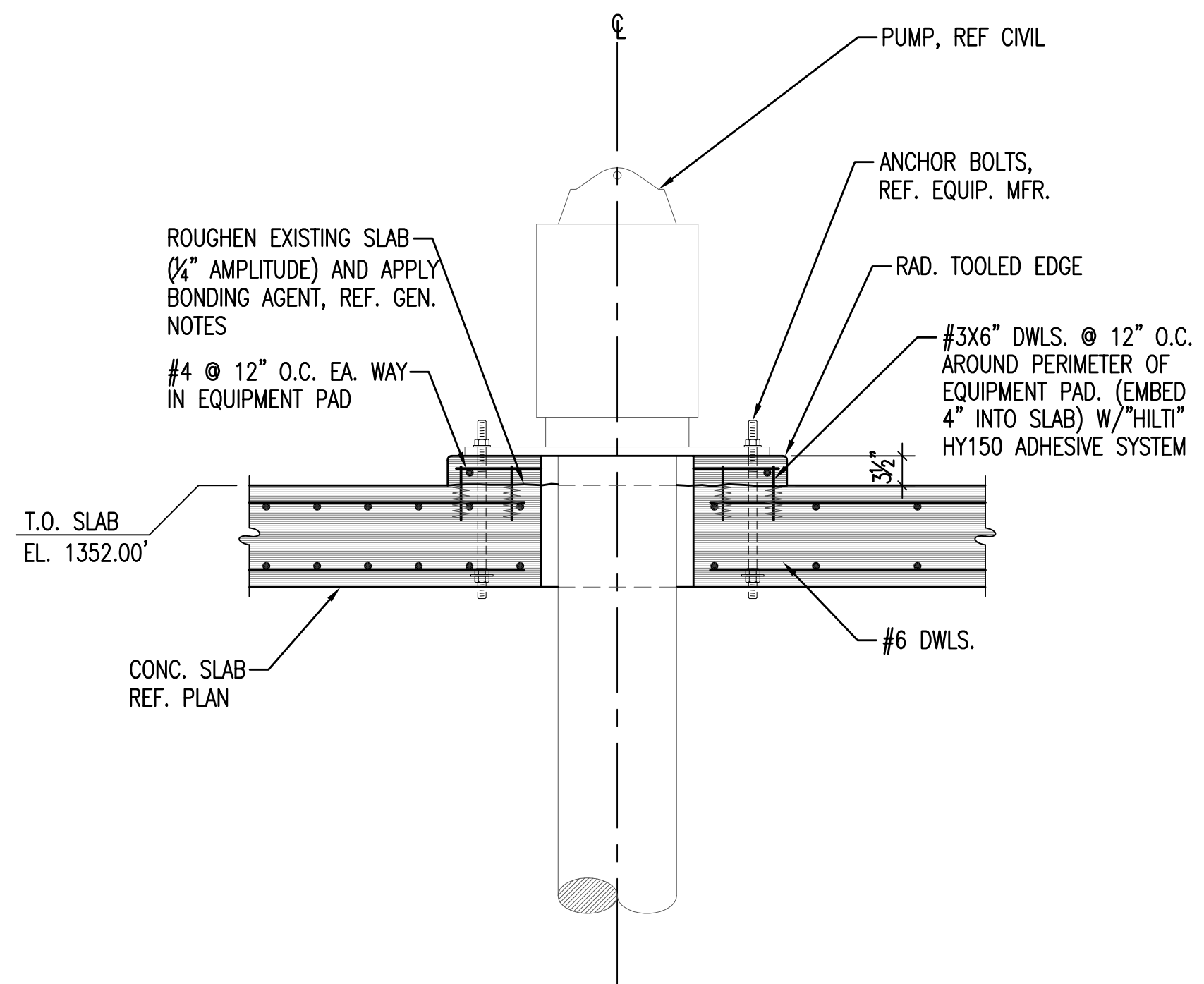
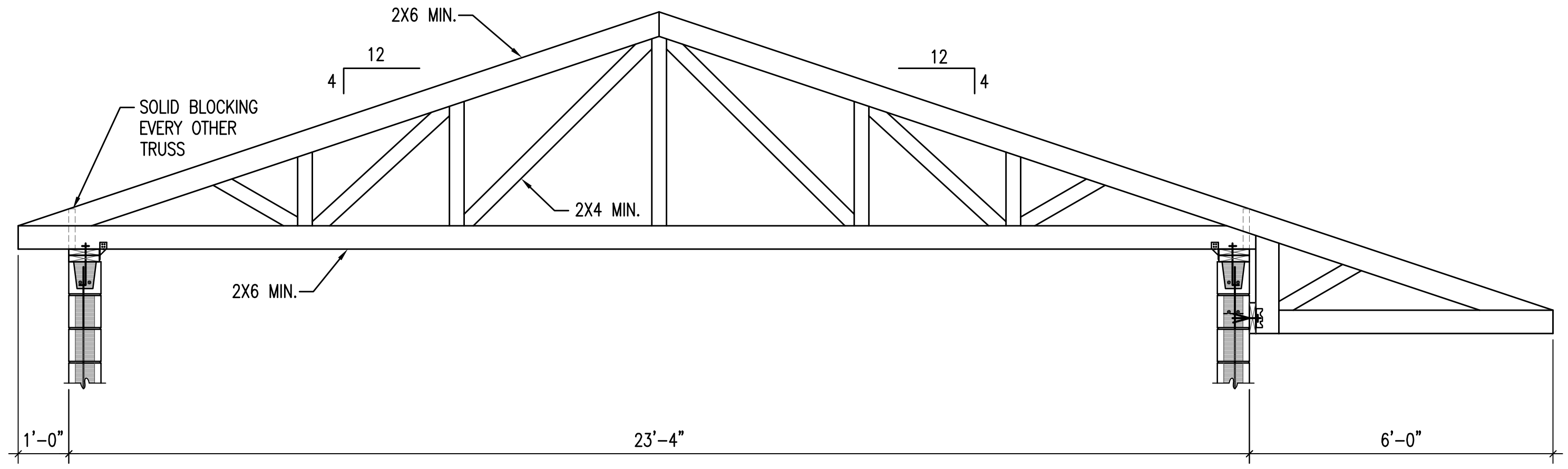


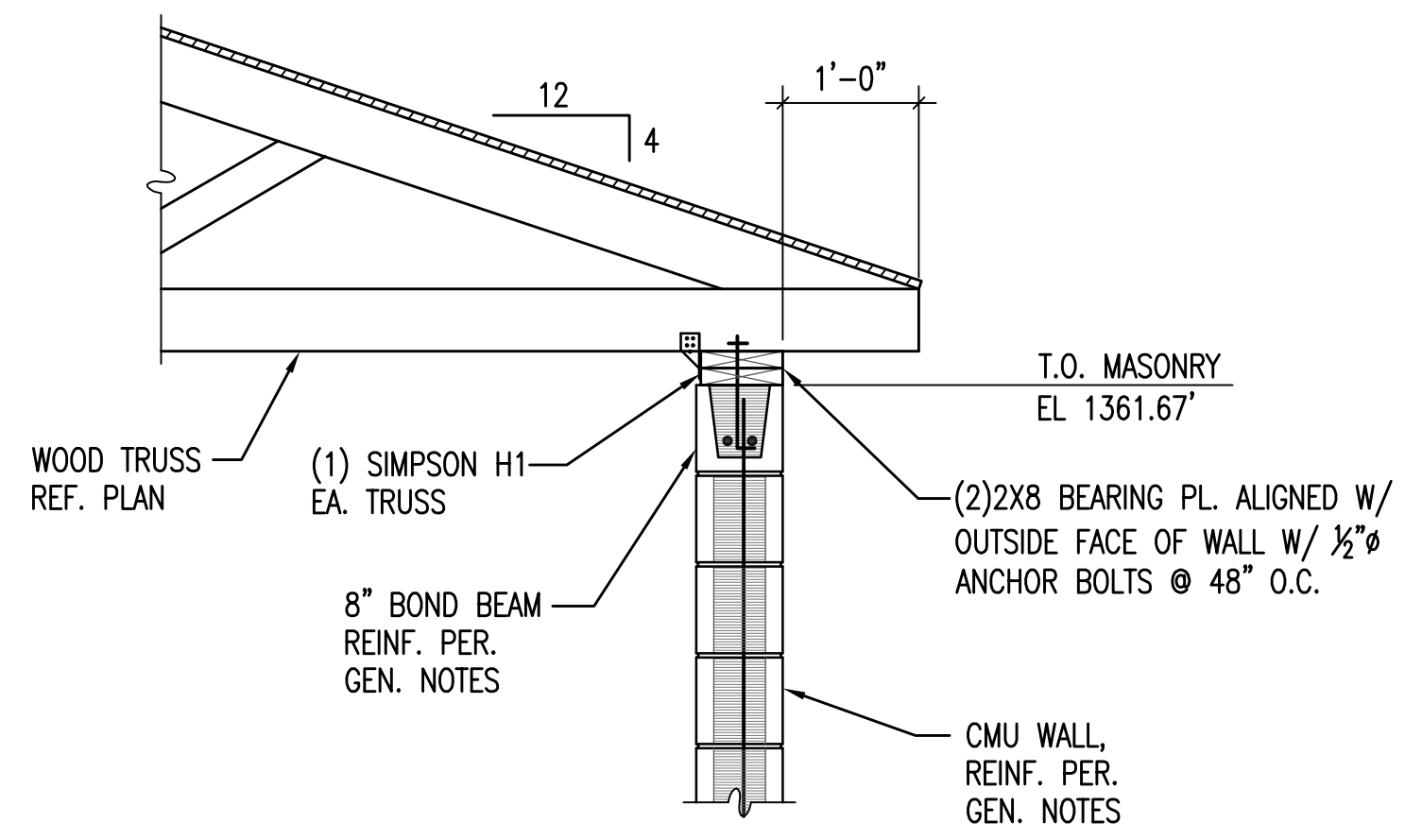
1 ROOF SHEATHING FASTENING DETAIL
51 NO SCALE



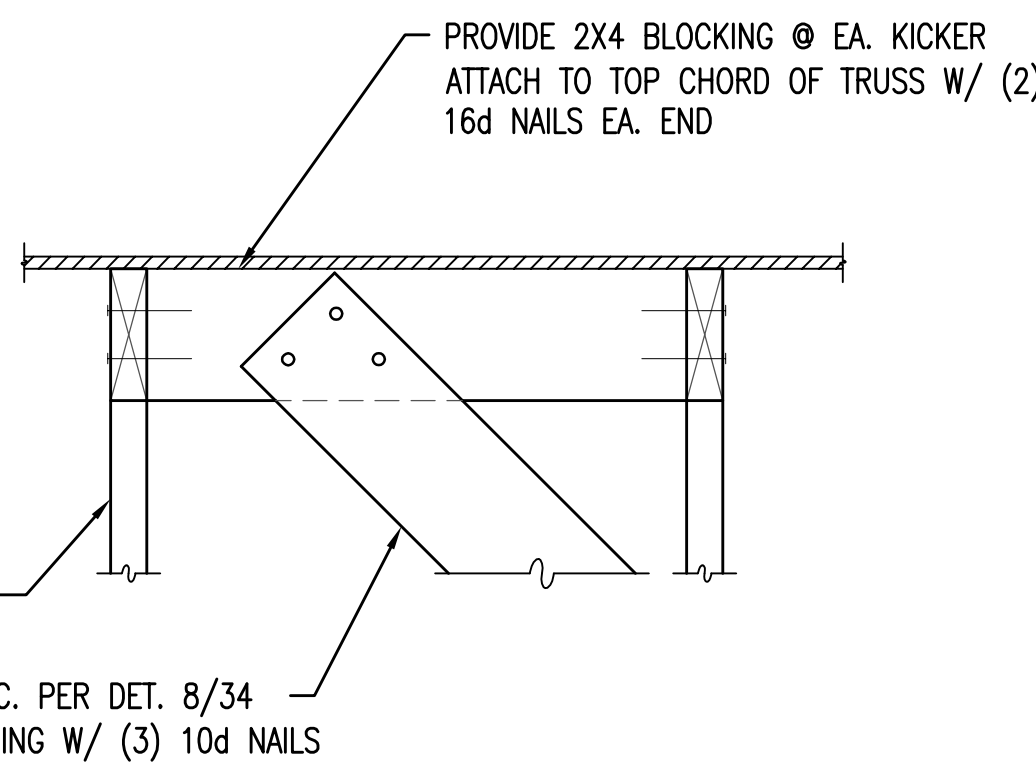
2 SECTION AT EQUIP. PAD
51 3/4"=1'-0"



3 TYP. TRUSS ELEVATION
51 3/4"=1'-0"



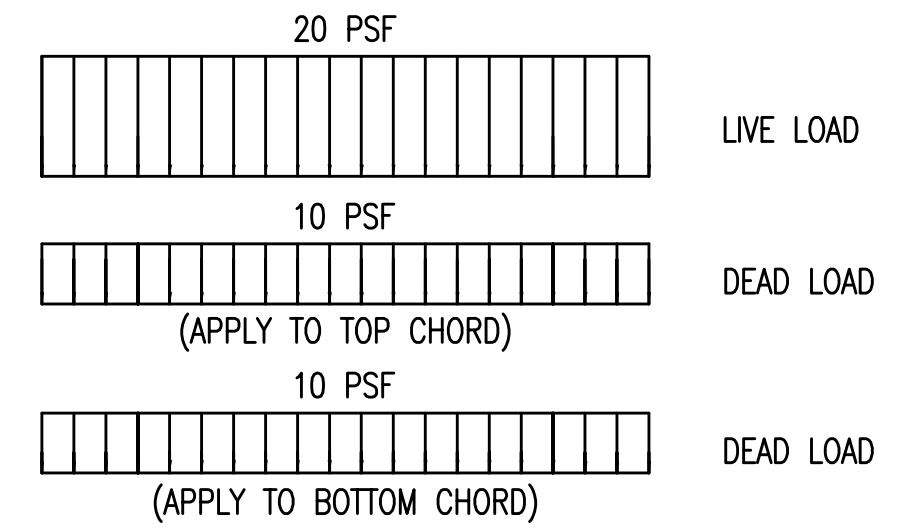
4 TYP. TRUSS BEARING DETAIL
51 3/4"=1'-0"



5 TYP. KICKER DETAIL AT ROOF
51 1 1/2"=1'-0"

TRUSS NOTES:

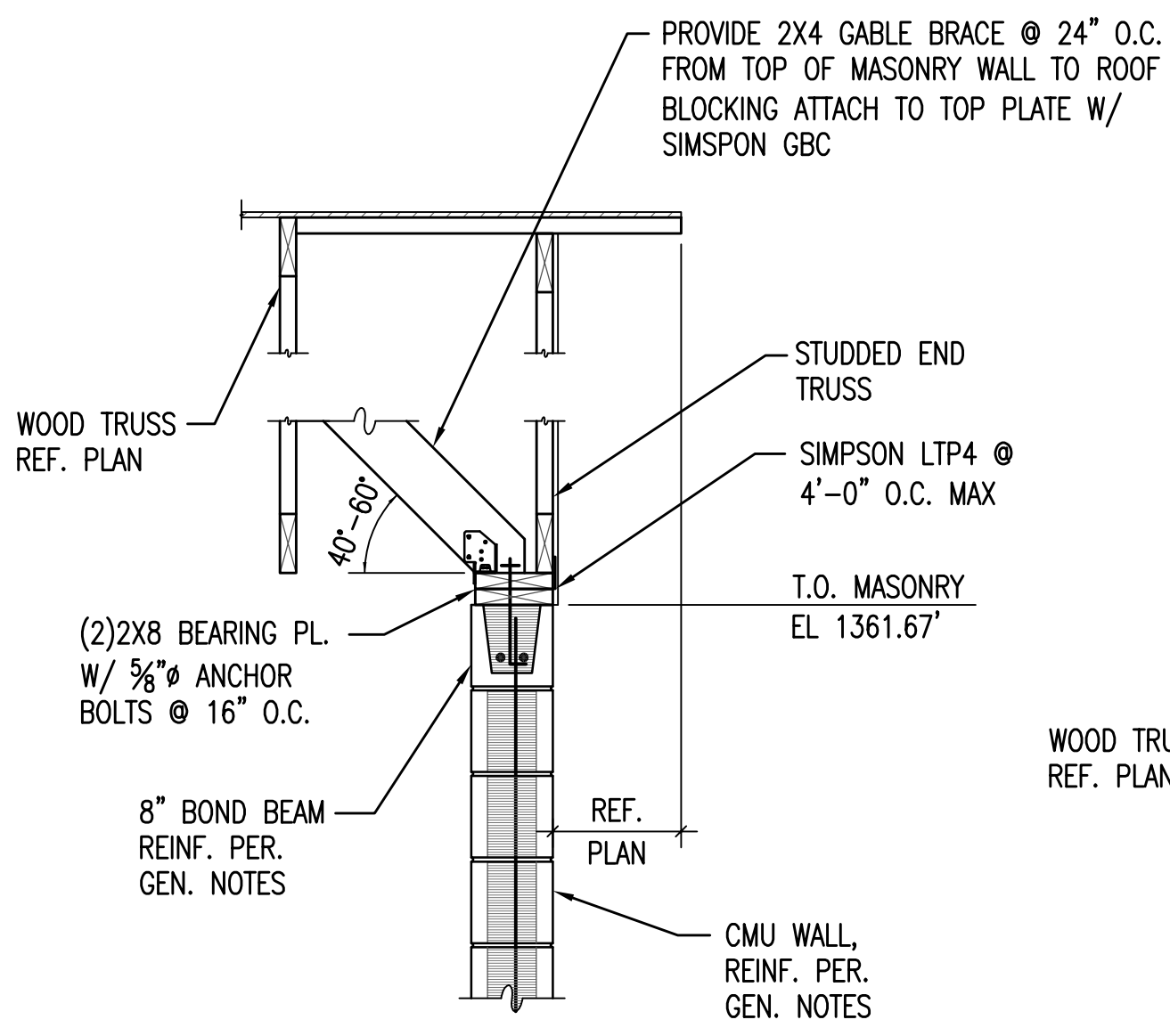
- TRUSS DRAWINGS ARE PROVIDED FOR CONCEPTUAL DESIGN ONLY. ENGINEERED DRAWINGS & CALCULATIONS SHALL BE SUBMITTED TO THE OWNER AND THE ENGINEER OF RECORD, PRIOR TO INSTALLATION. DRAWINGS AND CALCULATIONS SHALL BE SEALED BY A STRUCTURAL ENGINEER LICENSED IN THE STATE WHERE THE PROJECT IS LOCATED PRIOR TO SUBMITTAL.
- ROOF CONNECTORS SHALL BE SIMPSON STRONG-TIE.
- TRUSSES ON SITE PRIOR TO INSTALLATION SHALL BE STORED IN A VERTICAL POSITION WITH SUPPORT POINTS PROVIDED AT FINAL BEARING POINTS AND BRACED TO AVOID TIPPING.
- INSTALLATION OF ALL TRUSSES SHALL BE DONE USING A SPREADER BAR WITH A THREE POINT VERTICAL PICK AND CARE IS TO BE USED IN LIFTING TO MINIMIZE HORIZONTAL BENDING.
- IMPROPER HANDLING OF THE TRUSSES AS NOTED ABOVE AND IN THE SPECIFICATIONS SHALL MEAN REMOVAL OF THE TRUSSES FROM THE JOB SITE.
- DOUBLE TRUSSES TO BE NAILED TOGETHER W/ 10d @ 12" O.C. EACH SIDE, TOP & BOTTOM CHORDS & WEBS.
- SEE DIVISION SIX OF THE SPECIFICATIONS FOR DETAILS ON TRUSS MANUFACTURING AND NAILING.
- TRUSS TO TRUSS CONNECTIONS SHALL BE VERIFIED BY THE TRUSS DESIGNER.



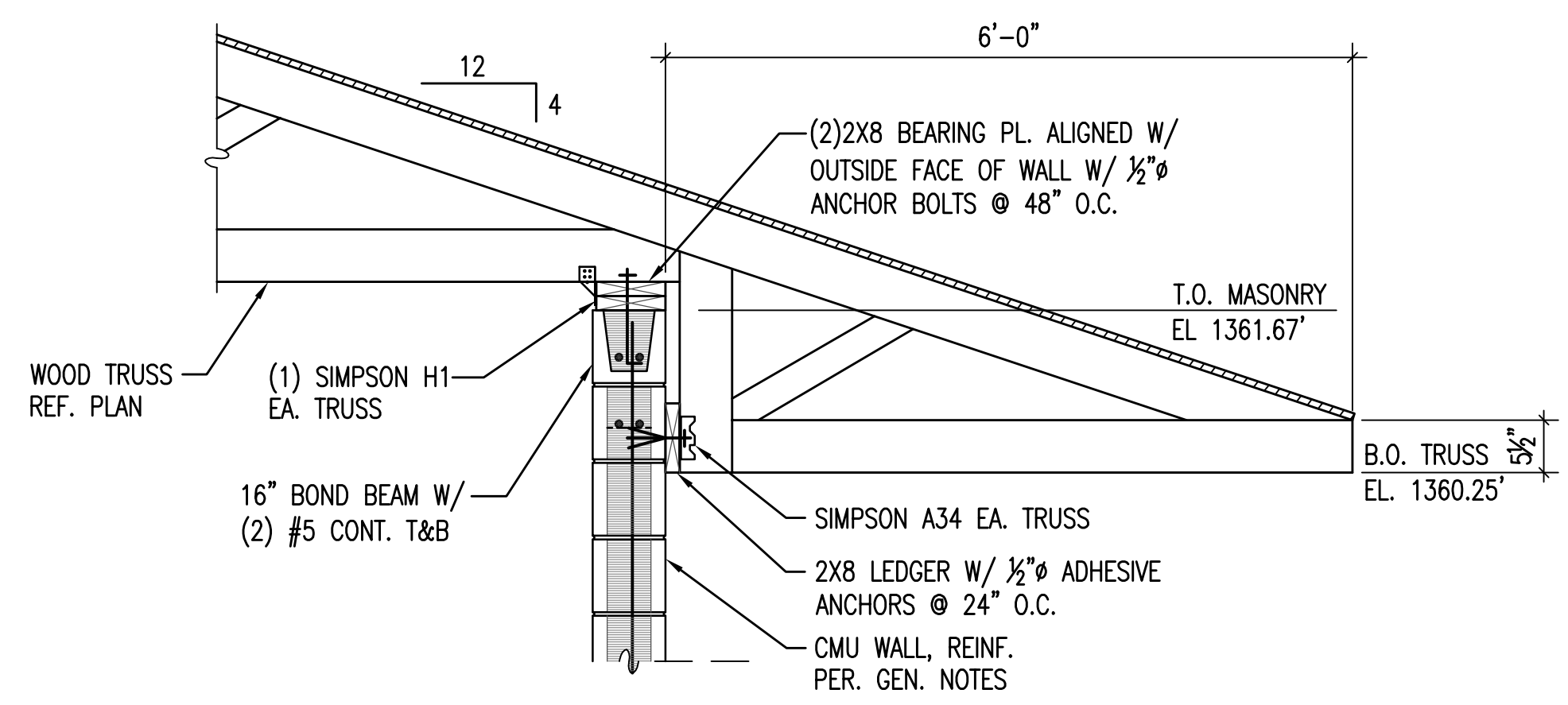
NOTE: SNOW DRIFT AND UNBALANCED SNOW LOADING SHALL BE INCORPORATED INTO THE TRUSS DESIGN.

6 TRUSS NOTES
51 NO SCALE

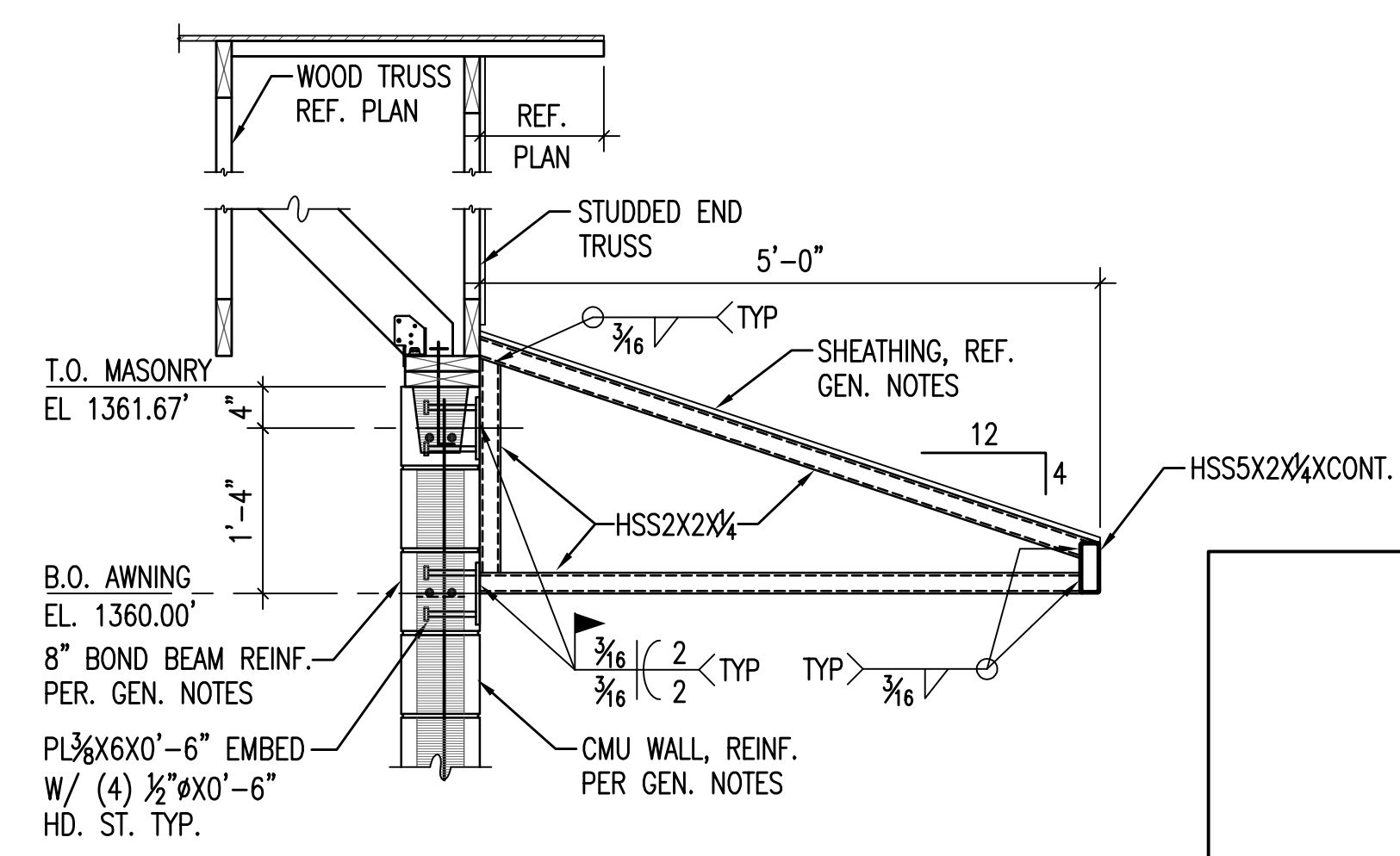
7 TRUSS LOADING
51 NO SCALE



8 TYP. END TRUSS DETAIL
51 3/4"=1'-0"



9 TRUSS BEARING AT LONG OVERHANG
51 3/4"=1'-0"



10 AWNING SECTION
51 3/4"=1'-0"

Scaled 09-29-2009 11:31:28 AM by DDC
 Plot Scale 1:16 09-29-2009 11:31:37 AM
 S:\2009\04274\004\EST\REV-BID\04274-51-DTL

No.	Revision	By	Date
PHASE II - STORM WATER DRAIN #332 EAST PUMP STATION STRUCTURAL DETAILS JAMES L. ARMOUR, P.E. - CITY ENGINEER CITY OF WICHITA PROJECT NO. 468-84396 Professional Engineering Consultants, P.A. 303 S. TOPEKA • WICHITA, KANSAS 67202 316-262-2691 • FAX 316-262-3003			
Designed by	GB	Job No.	35-04274-042
Drawn by	DC	Date	SEPTEMBER 2009

