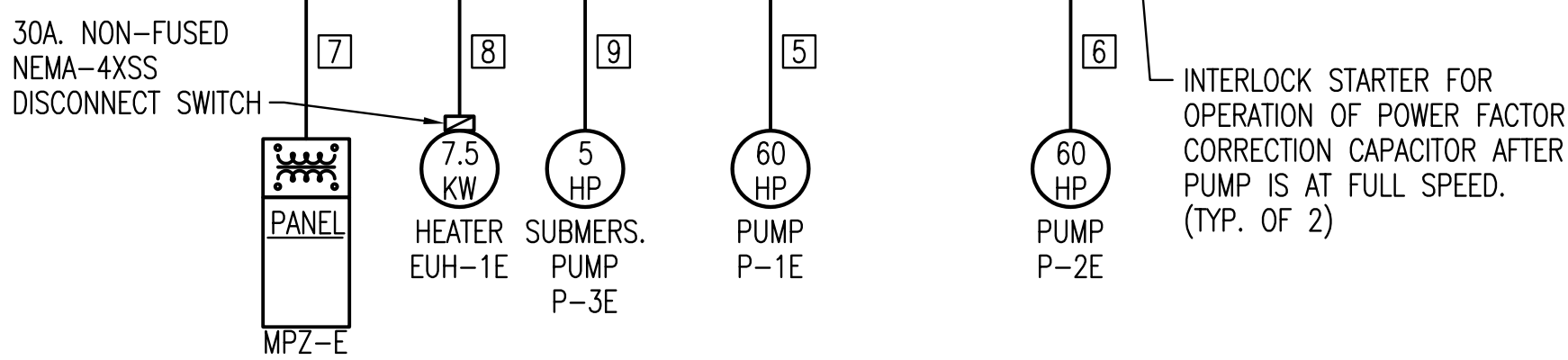
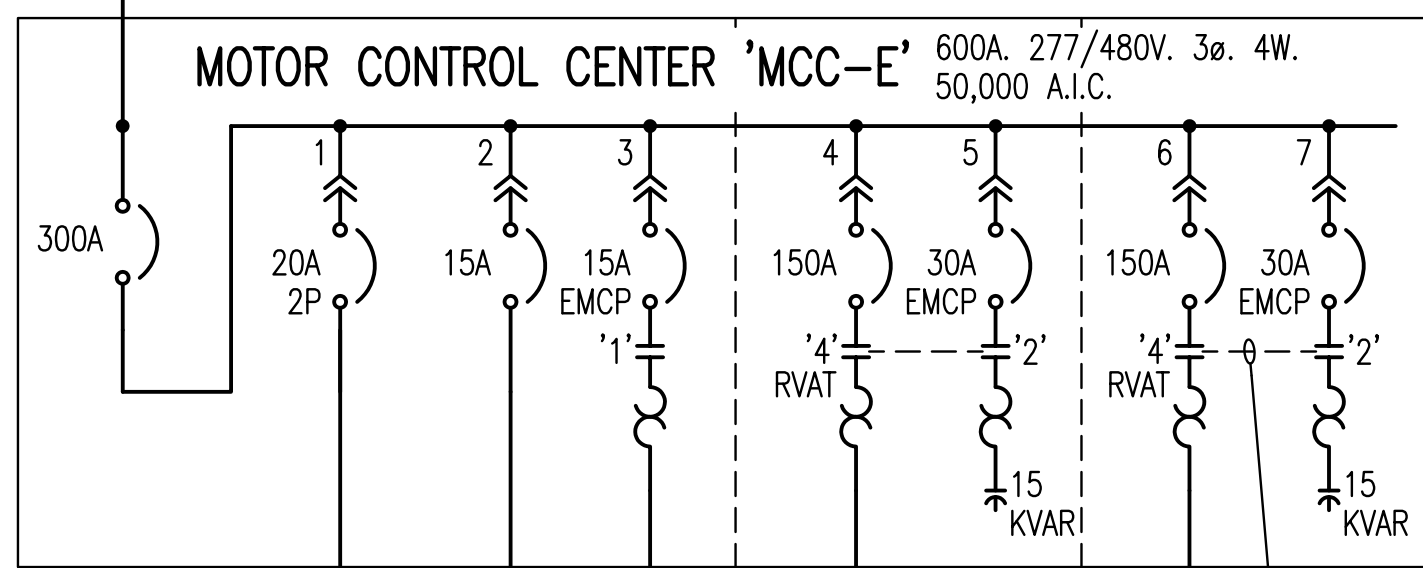
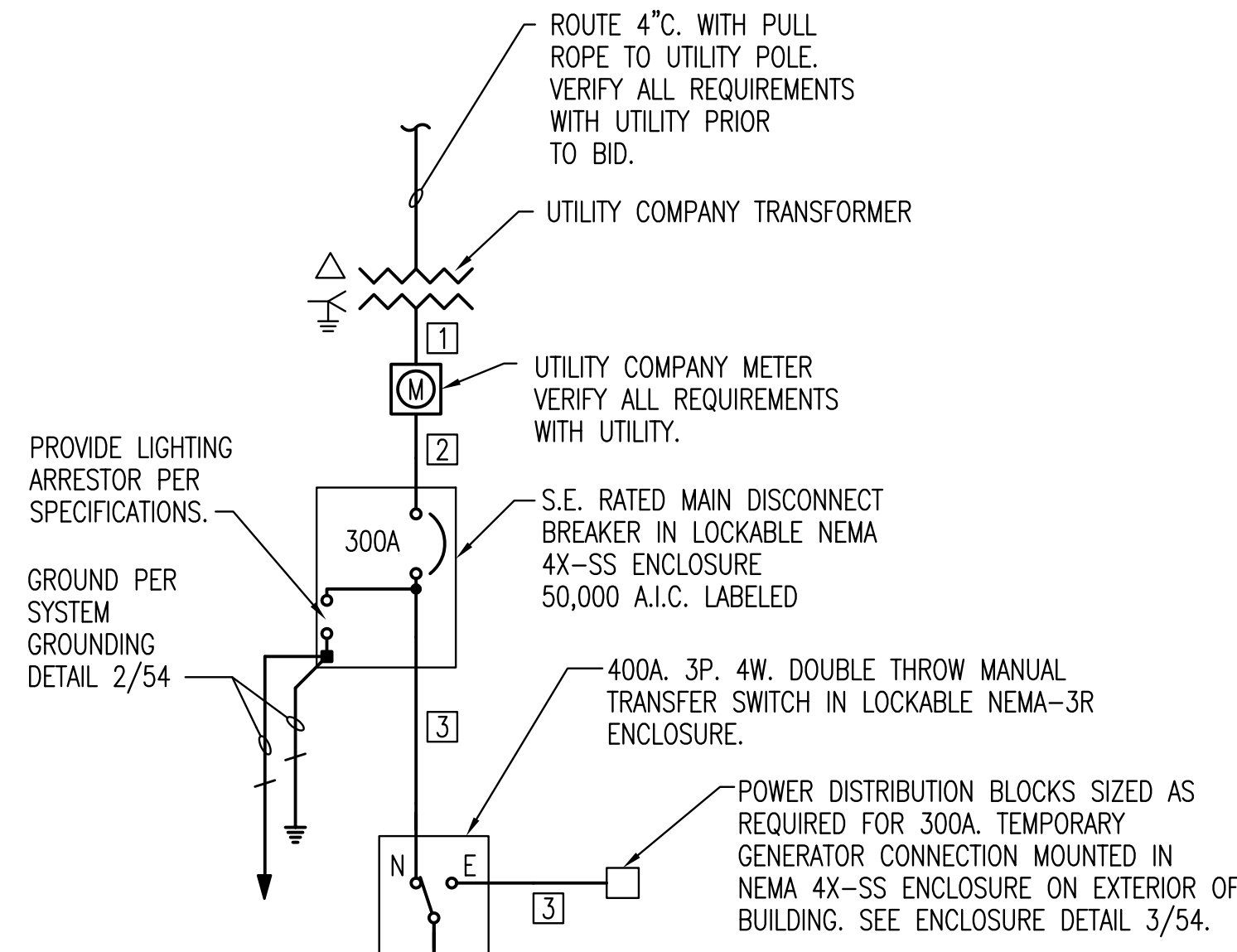


FEEDER SCHEDULE

DESIG.	EQUIPMENT SERVED	CONDUCTORS			GROUND SIZE PER SET	CONDUIT SIZE PER SET
		SETS	NO.	SIZE		
1	UTILITY METER	1	4	#350 KCML CU.	---	4" C.
2	SERVICE DISCONNECT	1	4	#350 KCML CU.	---	4" C.
3	MANUAL TRANS. SWITCH	1	4	#350 KCML CU.	#4	4" C.
4	'MCC-E'	1	4	#350 KCML CU.	#4	4" C.
5	PUMP 'P-1E'	1	3	#1/0 AWG CU.	#6	2" C.
6	PUMP 'P-2E'	1	3	#1/0 AWG CU.	#6	2" C.
7	PANEL 'MPZ-E'	1	2	#12 AWG CU.	#12	3/4" C.
8	EUH-1E	1	3	#12 AWG CU.	#12	1/2" C.
9	'SP-1E'	1	3	#12 AWG CU.	#12	1/2" C.

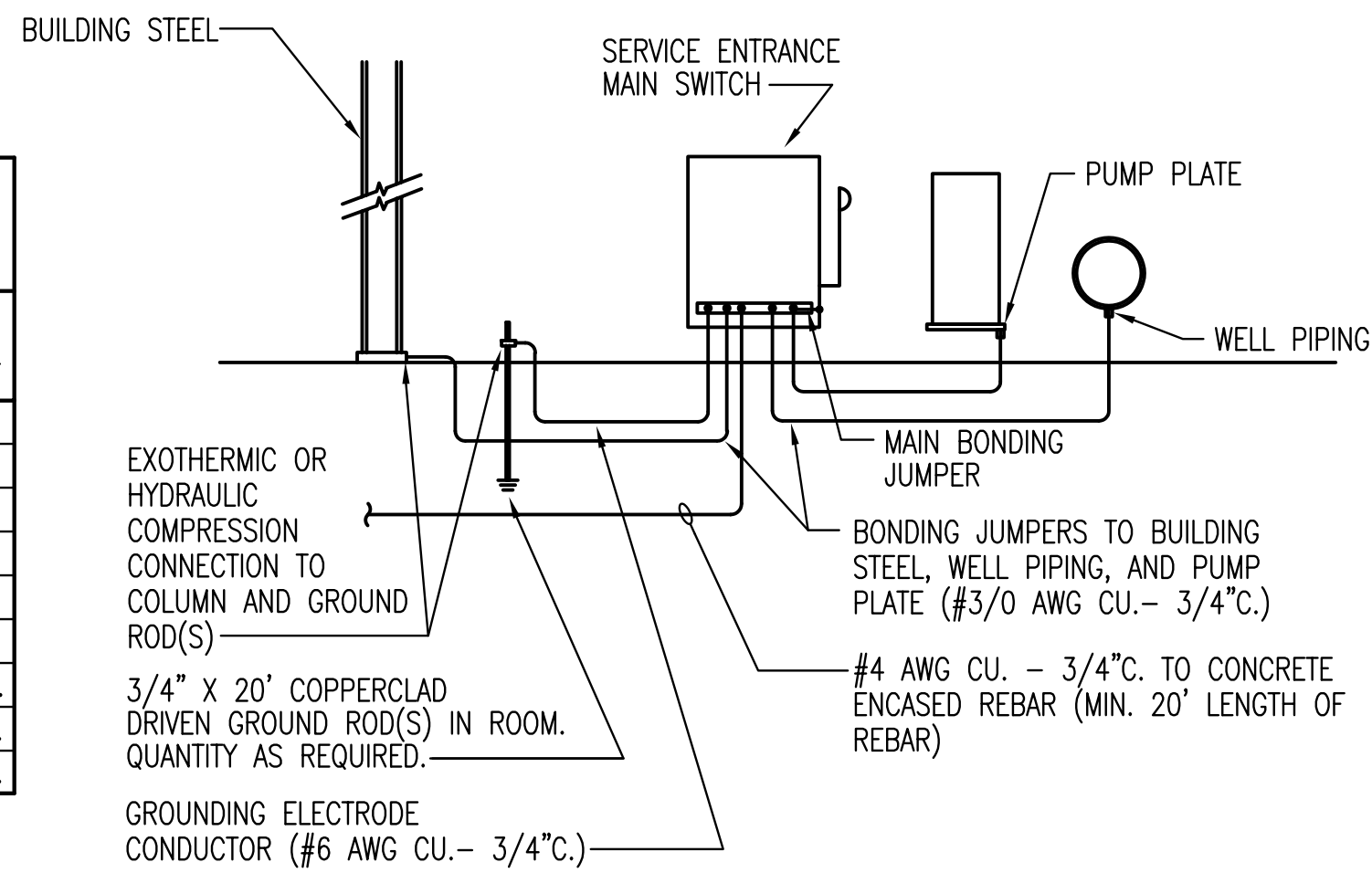


1 ELECTRICAL ONE-LINE DIAGRAM

NO SCALE

GENERAL ONE-LINE DIAGRAM NOTES:

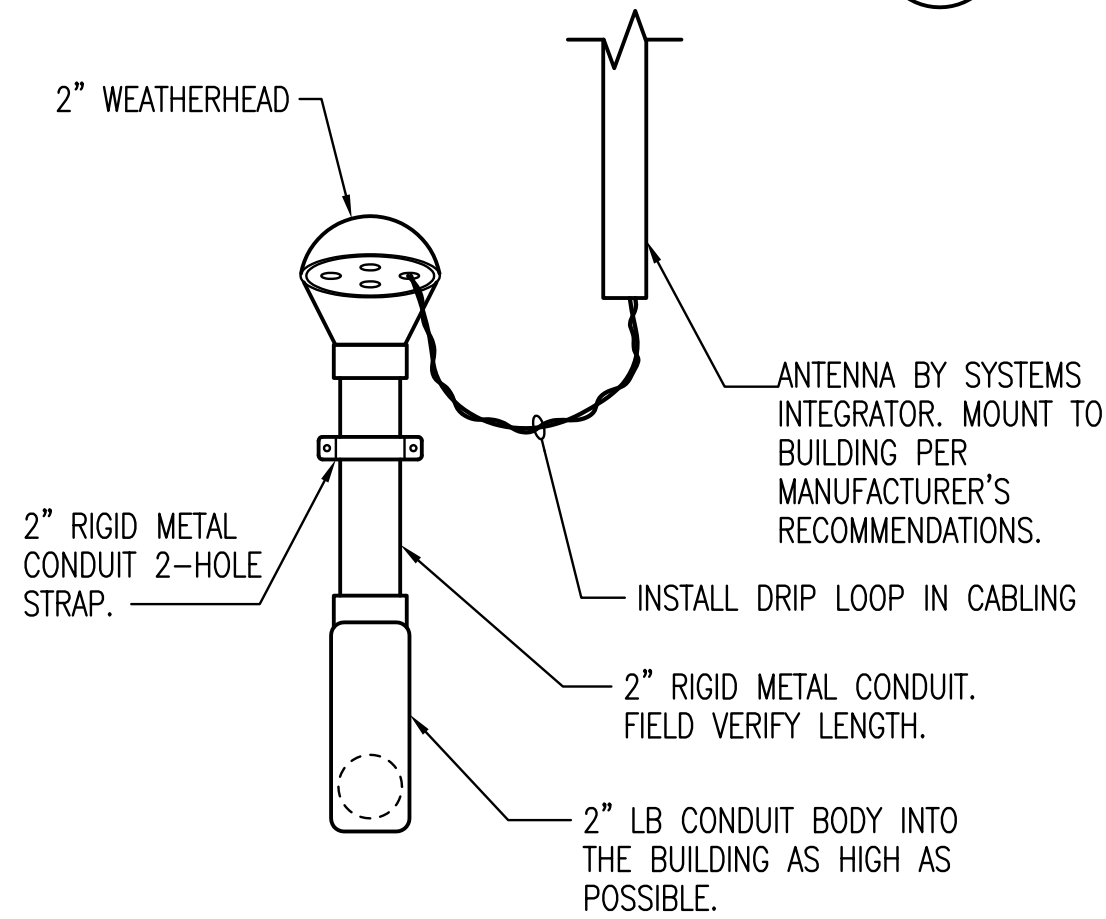
- UNLESS OTHERWISE NOTED, ALL CIRCUIT BREAKERS AND/OR SWITCHES ARE THREE POLE.
- EMCP = ELECTRONIC MOTOR CIRCUIT PROTECTOR
- RVAT = REDUCED VOLTAGE AUTO-TRANSFORMER



NOTES: 1. PROVIDE OTHER GROUNDING CONNECTIONS AS SPECIFIED IN N.E.C. ARTICLE 250.50.(2005)

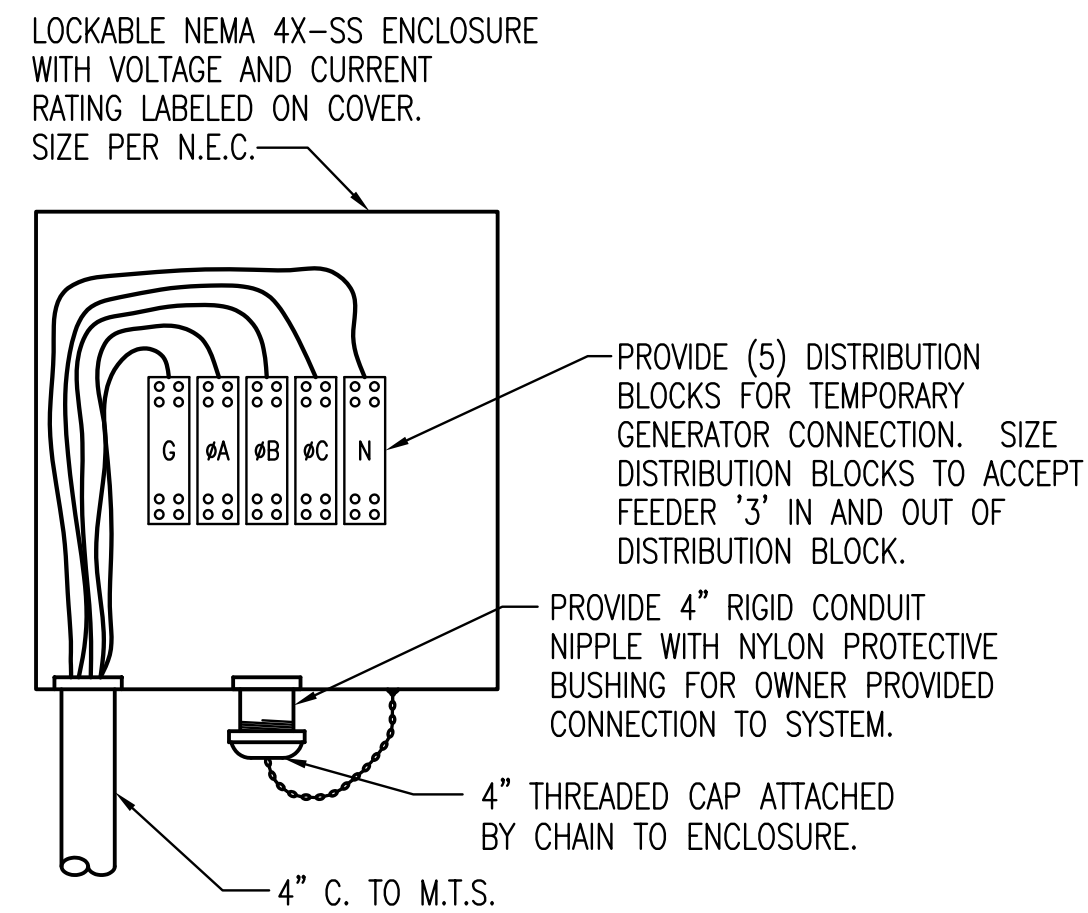
2 SYSTEM GROUNDING DETAIL

NO SCALE



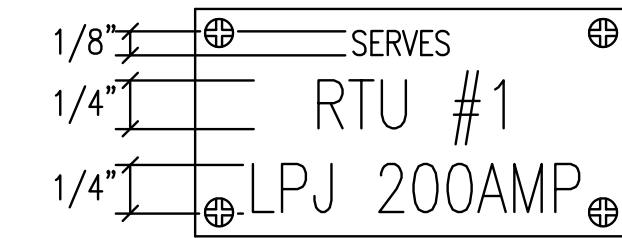
5 ANTENNA RISER DETAIL

NO SCALE

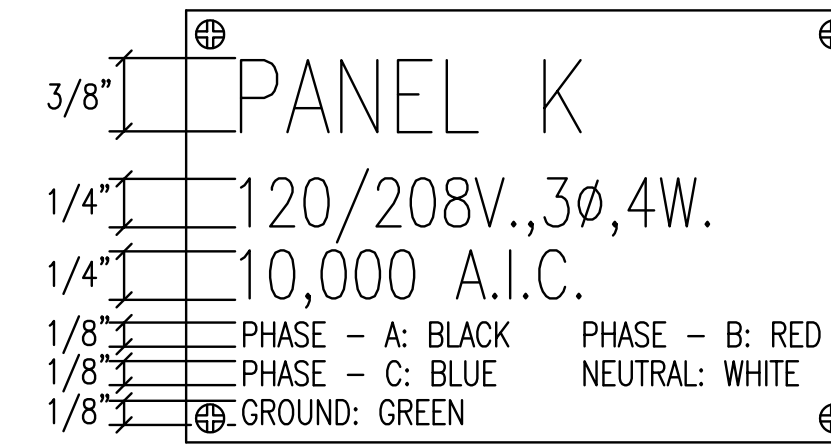


3 TEMPORARY GENERATOR CONNECTION ENCLOSURE

NO SCALE



DISCONNECT SWITCH



BRANCH CIRCUIT/DISTRIBUTION PANEL

4 TYPICAL NAME PLATES

NO SCALE

GENERAL NOTES

- ALL ELECTRICAL WORK SHALL COMPLY WITH THE LATEST EDITION OF THE NATIONAL ELECTRICAL CODE (NEC) & THE AMERICANS WITH DISABILITIES ACT (ADA).
- REFER TO RELATED ARCHITECTURAL, MECHANICAL, AND STRUCTURAL DRAWINGS FOR RELATED INFORMATION.
- REFER TO THE SPECIFICATIONS FOR DATA NOT ON THE DRAWINGS.
- E.C. SHALL REFER TO MECHANICAL DRAWINGS AND SPECIFICATIONS FOR THE REQUIREMENTS ASSOCIATED WITH WIRING AND CONNECTION OF INTERLOCKING AND CONTROLS OF MECHANICAL UNITS AND THERMOSTAT LOCATIONS.
- COORDINATE OUTLET BOX LOCATIONS WITH MASONRY TO MINIMIZE CUTTING OF BRICK OR BLOCK.
- ALL MOUNTING HEIGHTS TO CENTERLINE OF ITEM UNLESS OTHERWISE NOTED. VERIFY ALL OUTLET LOCATIONS ON THE JOB PRIOR TO ROUGH-IN.
- CONDUIT RUN W/CONDUCTORS AS INDICATED & GROUND WIRE SIZED PER N.E.C. 250.122. CONDUIT SIZE AS REQUIRED.
- WHEN INCREASED CONDUCTOR SIZES ARE SHOWN ON THE PLANS, THE LARGER CONDUCTOR SIZE SHALL BE USED THROUGHOUT THE LENGTH OF THE CIRCUIT, INCLUDING NEUTRAL AND GROUND.

SYMBOL LIST

SYMBOL	DESCRIPTION	MOUNTING
(A)	LIGHT FIXTURE & FIXTURE LETTER	WALL
(A)	LIGHT FIXTURE & FIXTURE LETTER	WALL
(A)	EMERGENCY BATTERY LIGHT FIXTURE	CEIL./WALL
\$ \$ \$ \$ \$	SWITCHES (1-POLE, 2-POLE, 3-WAY, 4-WAY)	46" AFF
WP	WEATHERPROOF	
AFF	ABOVE FINISHED FLOOR	
UON	UNLESS OTHERWISE NOTED	
(S)	DUPLEX GROUNDED RECEPTACLE	17" AFF
(S)	GROUND FAULT DUPLEX RECEPTACLE	17" AFF
(S)	SPECIAL DEVICE (AS NOTED)	
(J)	JUNCTION BOX	
(F)	FUSIBLE BUS #SSY	
(A)	BRANCH CIRCUIT PANEL & PANEL DESIG.	72" TO TOP
(E)	ELECTRICAL DISTRIBUTION EQUIPMENT	
(1)	FEEDER DESIGNATION	
(-)	CONDUIT RUN 2#12 & 1#12 GRD.- 1/2" C.	CEIL./WALL
(-)	CONDUIT RUN 2#12 & 1#12 GRD.- 3/4" C.	EARTH/FLOOR
(-)	CONDUIT RUN 2 CIRCUITS, 3#12 & 1#12 GRD.- 3/4" C.	EARTH/FLOOR
(-)	CONDUIT RUN PARTIAL CIRCUIT	
(-)	SEE GENERAL NOTE 7 & 8	
(-)	CONDUIT RUN TWO (2) CIRCUITS	CEIL./WALL
(-)	PHASE CONDUCTORS (#12 UON)	
(-)	NEUTRAL CONDUCTOR (#12 UON)	
(-)	SWITCH LEGS (#12 UON)	
(-)	GROUND CONDUCTOR (#12 UON)	
(M)	MAN-DOWN CONTACT	
(FS)	FLOAT SWITCH	
(PT)	PRESSURE TRANSDUCER	
(PT)	PRESSURE TRANSDUCER (RECEIVER)	
(TO)	MOTOR THERMAL OVERLOAD CONTACT	
(MS)	MOTOR MOISTURE SENSING CONTACT	
(S)	DISCRETE CONTROL CABLE (# OF PAIRS)	CEIL./WALL
(S)	ANALOG CONTROL CABLE (# OF SHIELDED PAIRS)	CEIL./WALL
(E)	EMERGENCY LIGHT (EXTERIOR)	96" AFF
(D)	INTRUSION DETECTION	CEILING

MINI POWER-ZONE: MPZ-E 240/120 VOLTS, 1 PHASE, 3 WIRE 30 AMP MAIN BKR, WALL MTD. 50000 AIC LABELED

CIRC NO.	LOAD V. A.	LOAD TYPE	LOAD DESCRIPTION	AMP SIZE	AMP SIZE	LOAD DESCRIPTION	LOAD TYPE	LOAD V. A.	CIRC NO.
1	470	LI	LIGHTING	1	20	A	20	1	CP-E
3	600	RT	CONV. RECEPTACLES	1	20	B	20	1	EMERGENCY LIGHT/HORN
5	400	PR	LE-2E	1	20	A	20	1	EF-1
7		SP	SPARE	1	20	B	20	1	SPARE
9		SPACE	SPACE			A			SPACE
11		SPACE	SPACE			B			SPACE

1 PANEL TO BE 5 KVA SQUARE D MINI POWER-ZONE OR APPROVED EQUAL WITH A 20A. 2P. 480V. PRIMARY BREAKER AND A 30A. 2P. 240V. SECONDARY BREAKER.

LIGHTING FIXTURE SCHEDULE

(P.E.C.)

FIXT. LTR.	MANUFACTURER CATALOG NUMBER	MANUFACTURER CATALOG NUMBER	MANUFACTURER CATALOG NUMBER	MANUFACTURER CATALOG NUMBER	DESCRIPTION	LAMP TYPE	LENS/LOUVER/ FINISH	W	L	D
CJ	WILLIAMS LU4-132-A-WET/1	COLUMBIA LU4-132-EBB-PAF	LITHONIA DMW-132-WLF-PAF	METALUX VT2-132DR-WL	4" WET LABEL	F32/B35	WHITE	.6771	4.333	
EC	DUAL LITE LM54-H7554	HIGH-LITES RL-9-19	LITHONIA ELT125-W-MT-H3512	SURE-LITES XR-9	EMERGENCY FIXT	12W TUNGSTEN HALOGEN	WHITE WALL-MTD	.75	1	
RD3	KIM WD14D3/42PL	INVUE VWS-42-CF-3S-BZ	LITHONIA ASW1-42TRT-SR3-DDBT		WALL DIRECTOR	42W TTT/35K 4-PIN	GLASS LENS	1.08	1.22	.74

- LIGHT FIXTURES SHALL BE PROVIDED WITH ELECTRONIC BALLASTS. COMPACT FLUORESCENT ELECTRONIC BALLASTS SHALL HAVE END-OF-LIFE PROTECTION CIRCUIT TO PREVENT WELDING OF LAMPS IN SOCKETS OR LAMP BREAKAGE. SEE THE SPECIFICATIONS. ALL FLUORESCENT LAMPS SHALL BE LOW MERCURY AND SHALL MEET ALL E.P.A. GUIDELINES FOR PASSING 'TCLP' TESTS. ALL INDOOR FLUORESCENT BALLASTS SHALL HAVE A DISCONNECTING MEANS MEETING THE REQUIREMENTS OF N.E.C. (2005) ARTICLE 410.73(G), EXCEPT FOR THOSE INSTALLED IN CORD-AND-PLUG CONNECTED FIXTURES.
- MANUFACTURERS LISTED IN THIS SCHEDULE OR APPROVED BY WRITTEN ADDENDUM WILL BE THE ONLY APPROVED MANUFACTURERS TO BID THE LIGHTING FIXTURES FOR THIS PROJECT. CONTRACTORS AND SUPPLIERS USING PRICING FROM MANUFACTURERS NOT LISTED ON SCHEDULE OR BY ADDENDUM DO SO AT THEIR OWN RISK.
- LIGHT FIXTURE SELECTIONS ARE BASED ON THE MANUFACTURER IN THE LEFT MOST COLUMN AS LISTED IN THE SCHEDULE. FIXTURES APPROVED AS EQUALS IN THIS SCHEDULE OR BY ADDENDUM SHALL BE EQUAL TO THE UNIT SPECIFIED IN THE LEFT MOST COLUMN, IE: SPRING LOADED LATCHES, POST PAINTED FINISH, AND PHOTOMETRICS.

2 ADDENDUM #5 NSM 8/27/09

No. Revision By Date

PHASE II - STORM WATER DRAIN #332

ELECTRICAL ONE-LINE DIAGRAM & SCHEDULES

EAST PUMP STATION

JAMES L. ARMOUR, P.E. - CITY ENGINEER
CITY OF WICHITA PROJECT NO. 468-84396

Professional Engineering Consultants, P.A.
303 S. TOPEKA • WICHITA, KANSAS 67202
316-262-2691 • FAX 316-262-3003

Designed by RDB Job No. 35-04274-042 Sht. 54 of 63
Drawn by NSM Date SEPTEMBER 2009

Saved: 09-25-2009 10:27:59 AM by NSM
 Plot Scale: 1/24 09-29-2009 4:30:08 PM
 \\net\local\es\local_data\Drawings\0920\2004\04274\004\04274-004-54 - EAST - ONE LINE AND SCHEDULES
 by CAE