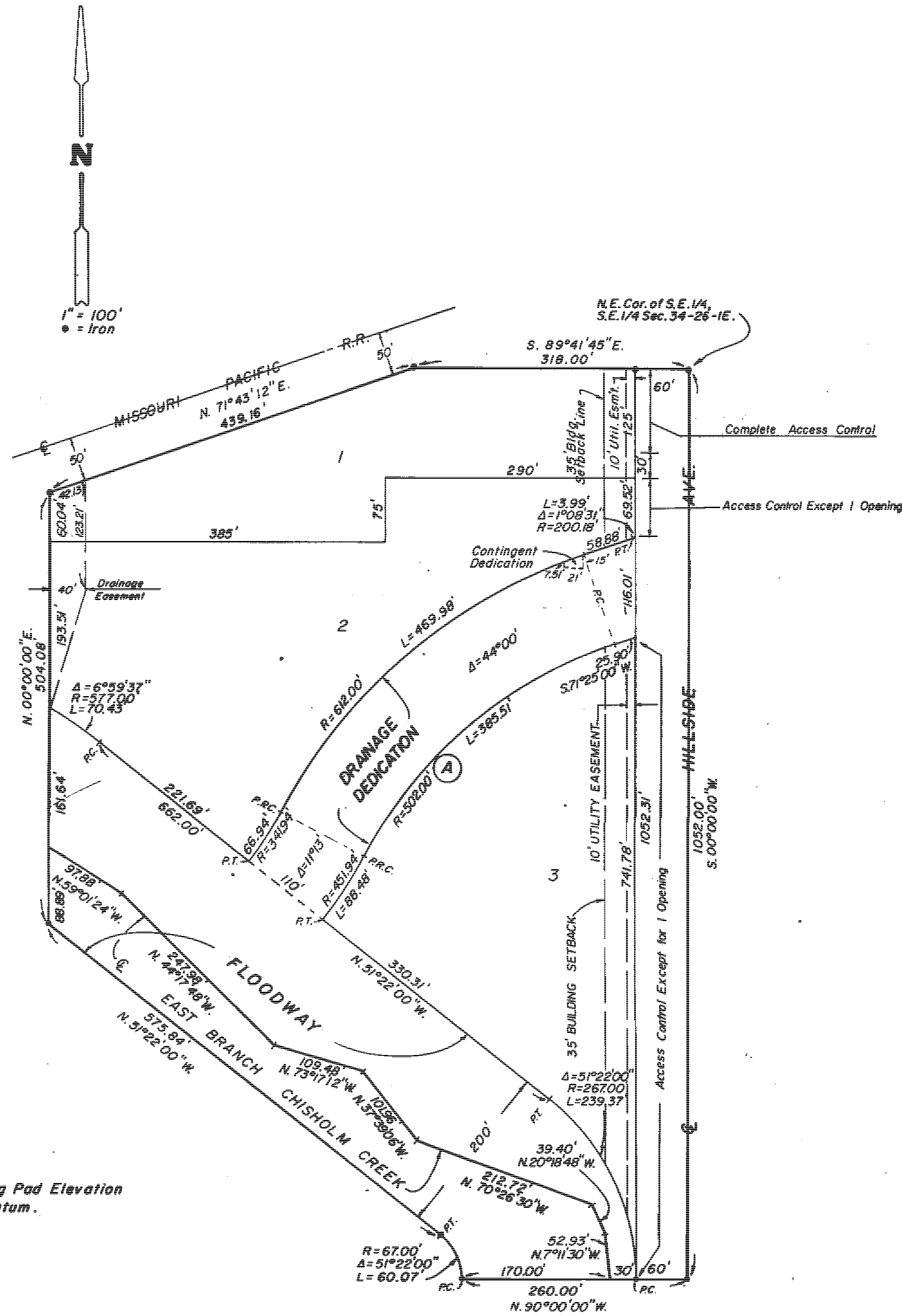


NORTH UNIVERSITY ADDITION

TO WICHITA, SEDGWICK COUNTY, KANSAS



Minimum Building Pad Elevation
= 149.0, City Datum.

STATE OF KANSAS, COUNTY OF SEDGWICK, SS:

I, Don C. Moehring II, a Civil Engineer in said State and County, do hereby certify that I have surveyed and platted "NORTH UNIVERSITY ADDITION" to Wichita, Sedgwick County, Kansas, into Lots, a Block, and a Street, the same being accurately set forth on the accompany plat, described as beginning at the North-east Corner of the SE $\frac{1}{4}$ of the SE $\frac{1}{4}$ of Sec. 34, T26S, R1E of the 8th P.M., Sedgwick County, Kansas; thence S. 00°00'00" W. along the East line of said SE $\frac{1}{4}$, a distance of 1,052.00'; thence N. 90°00'00" W., a distance of 260.00' to the P.C. of a curve to the Left having a radius of 67.00'; thence Northwesterly along said curve to the Left and through a central angle of 51°22'00", a distance of 60.07' to the P.T. of said curve, having a chord bearing N. 25°41'00" W., a distance of 58.08'; thence N. 51°22'00" W., a distance of 575.84'; thence N. 00°00'00" E., a distance of 504.08' to a point in the South line of the Missouri Pacific Railroad right-of-way; thence N. 71°43'12" E. along said right-of-way, a distance of 439.16' to a point in the North line of the SE $\frac{1}{4}$ of the SE $\frac{1}{4}$ of said Sec. 34; thence S. 89°41'45" E., a distance of 318.00' to the point of beginning.

Don C. Moehring II
Consulting Engineer
and contract purchasers

Know all men by these presents that we the undersigned, property owners of the land as set forth in the Civil Engineer's certificate, have caused the same to be surveyed and platted into Lots, a Block, and a Street, the same to be known as "NORTH UNIVERSITY ADDITION" to Wichita, Sedgwick County, Kansas. Easements for drainage and for the construction and maintenance of public utilities as indicated on the accompanying plat, if any, are hereby granted to and for the use of the public. The Floodway and also the Drainage Dedication are hereby dedicated to the public. No obstruction or change of grade, creation of channel or other work shall be carried on within said Floodway or Drainage Dedication without the permission of the City Engineer's Office or their successors of office. The Street is hereby dedicated to and for the use of the public. All abutter's rights of access to and from Hillside Avenue, over and across the East line of Block A, are hereby granted to the City of Wichita, Kansas, provided however, Lot 1 shall have one access over and across the South 30.0' thereof and Lots 2 and 3 shall each have access at one location, to be determined by the City Engineer.

FREY, INC.
Dale Frey
President

WICHITA DISPATCH CENTER, INC.
Wayne Brown
President

Eli Schrouck
Eli Schrouck

STATE OF KANSAS, COUNTY OF SEDGWICK, SS:
Be it remembered that on this 29th day of June, 1981, before me, a Notary Public in and for said State and County, came Dale Frey, President, Wichita Dispatch Center, Inc. by Wayne Brown, President, and Eli Schrouck, a single man, to me personally known to be the same persons who executed the foregoing instrument of writing and duly acknowledged the execution of the same. In testimony whereof I have hereunto set my hand and affixed my notarial seal the day and year above written.

Mildred J. Myers
MILDRED J. MYERS
Notary Public
Sedgwick County, Kansas
My Commission Expires Feb. 10, 1985

We the undersigned, mortgagee on part of the above described property do hereby consent to the plat of "NORTH UNIVERSITY ADDITION".

PRAIRIE STATE BANK
Bill Burghart
Vice President

James F. Bunck
Cashier

STATE OF KANSAS, COUNTY OF BUTLER, SS:

Be it remembered that on this 16th day of June, 1981, before me, a Notary Public in and for said State and County, came Prairie State Bank by Bill Burghart, Vice President, and James F. Bunck, Cashier, to me personally known to be the same persons who executed the foregoing instrument of writing and duly acknowledged the execution of the same. In testimony whereof I have hereunto set my hand and affixed my notarial seal the day and year above written.

June K. Pressnell
Notary Public
Butler County, Kansas
My Commission Expires 8-7-81

My Commission Expires August 9, 1981
This plat of "NORTH UNIVERSITY ADDITION" has been submitted to and approved by the Wichita-Sedgwick County Metropolitan Area Planning Commission.
Dated this 9th day of April, 1981.

WICHITA-SEDGWICK COUNTY METROPOLITAN AREA PLANNING COMMISSION
Alvin J. Hennessy, Jr.
Chairman

Robert A. Lakin
Secretary

This plat has been approved and all dedications shown hereon, if any, accepted by the City Commission of the City of Wichita, Kansas, this 28th day of July, 1981.

Tony Casado
VICE Mayor

Donald C. Gaick
City Clerk

This plat has been approved and all dedications shown hereon, if any, accepted by the Board of County Commissioners of Sedgwick County, Kansas, this 6th day of August, 1981.

Donald E. Gragg
Chairman

Jack Spratt
Commissioner

Tom Scott
Commissioner

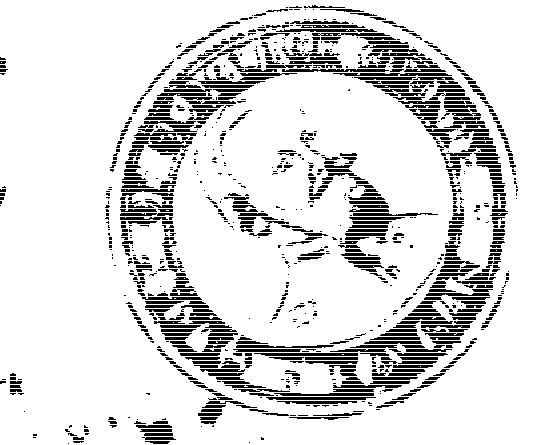
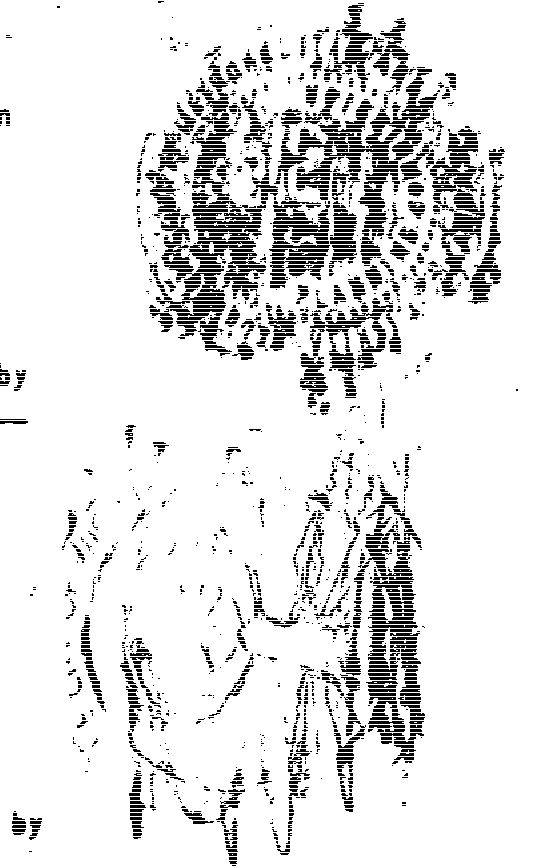
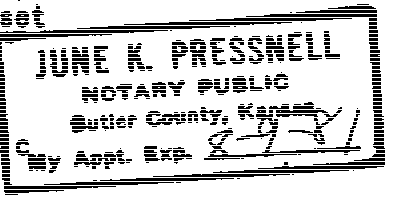
Attest: Dorothy K. White
County Clerk

STATE OF KANSAS, COUNTY OF SEDGWICK, SS:
This is to certify that this instrument was filed for record in the Register of Deeds Office at 10:30 AM on the 6th day of August, 1981.

Bette F. McCart
Register of Deeds

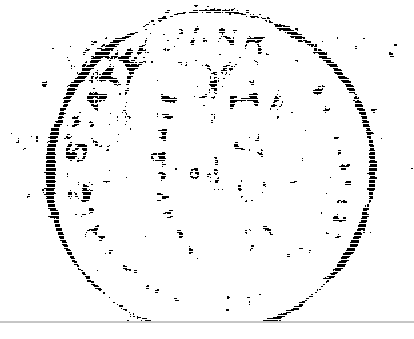
Pat Kettler
Deputy

Entered on transfer record this 6 day of August, 1981.
Dorothy K. White
County Clerk



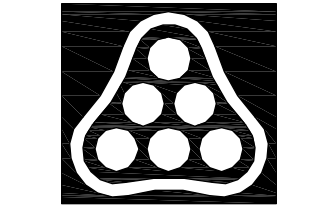
Saved 01-10-2011 8:56:53 AM by BJS
 Plot Scale 1:100 01-17-2011 3:33:43 PM by BILL J. SEKSON
 ###

20.00



Ruggles & Bohm, P.A.

X



No.	Revision	By	Date
HEARTLAND PREPAREDNESS CENTER PAVING AND DRAINAGE IMPROVEMENTS PLAT JAMES L. ARMOUR, P.E. - CITY ENGINEER CITY OF WICHITA PROJ. NO. 472-84898 Professional Engineering Consultants, P.A. 303 S. TOPKA • WICHITA, KANSAS 67202 316-262-2691 • FAX 316-262-3003			
Designed by	BMM	Job No.	35-09307
Drawn by	BJS	Date	December 2009

Sheet 6 of 59