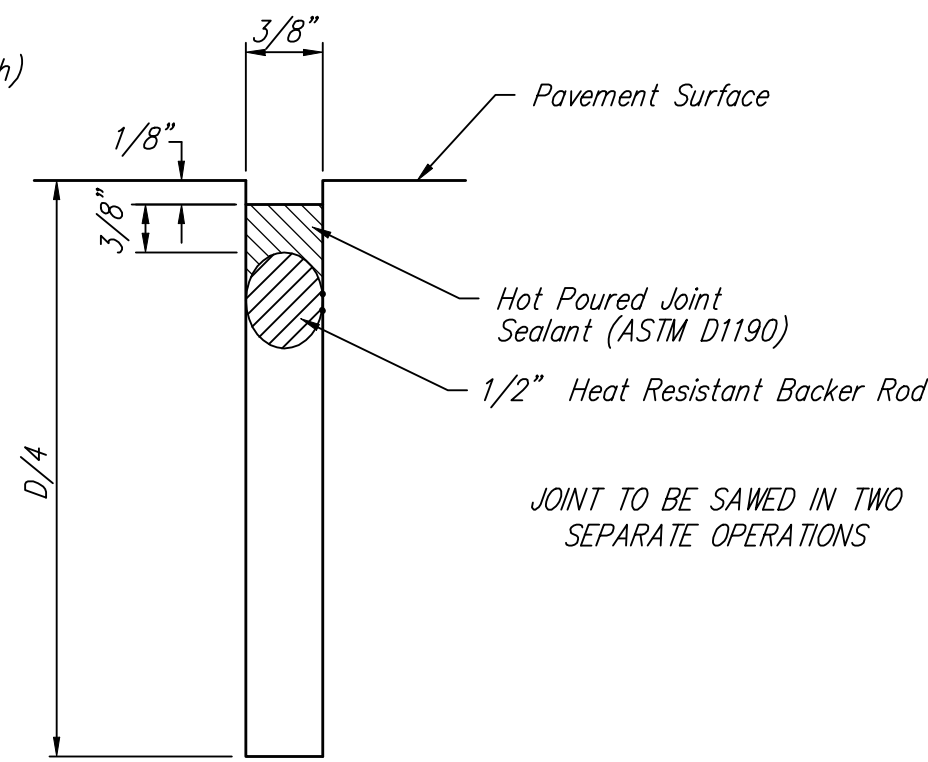
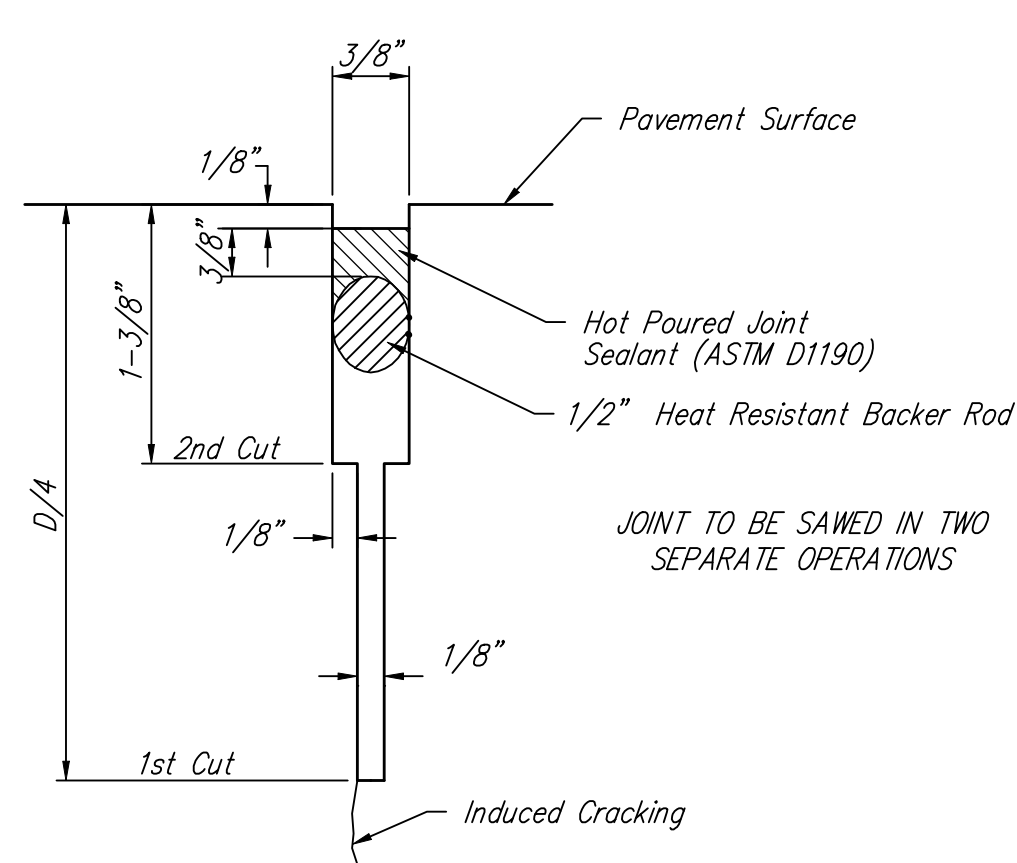


**SPECIAL EXPANSION JOINT TYPE (E.J.)
WIRE MESH REINFORCED PAVEMENT**

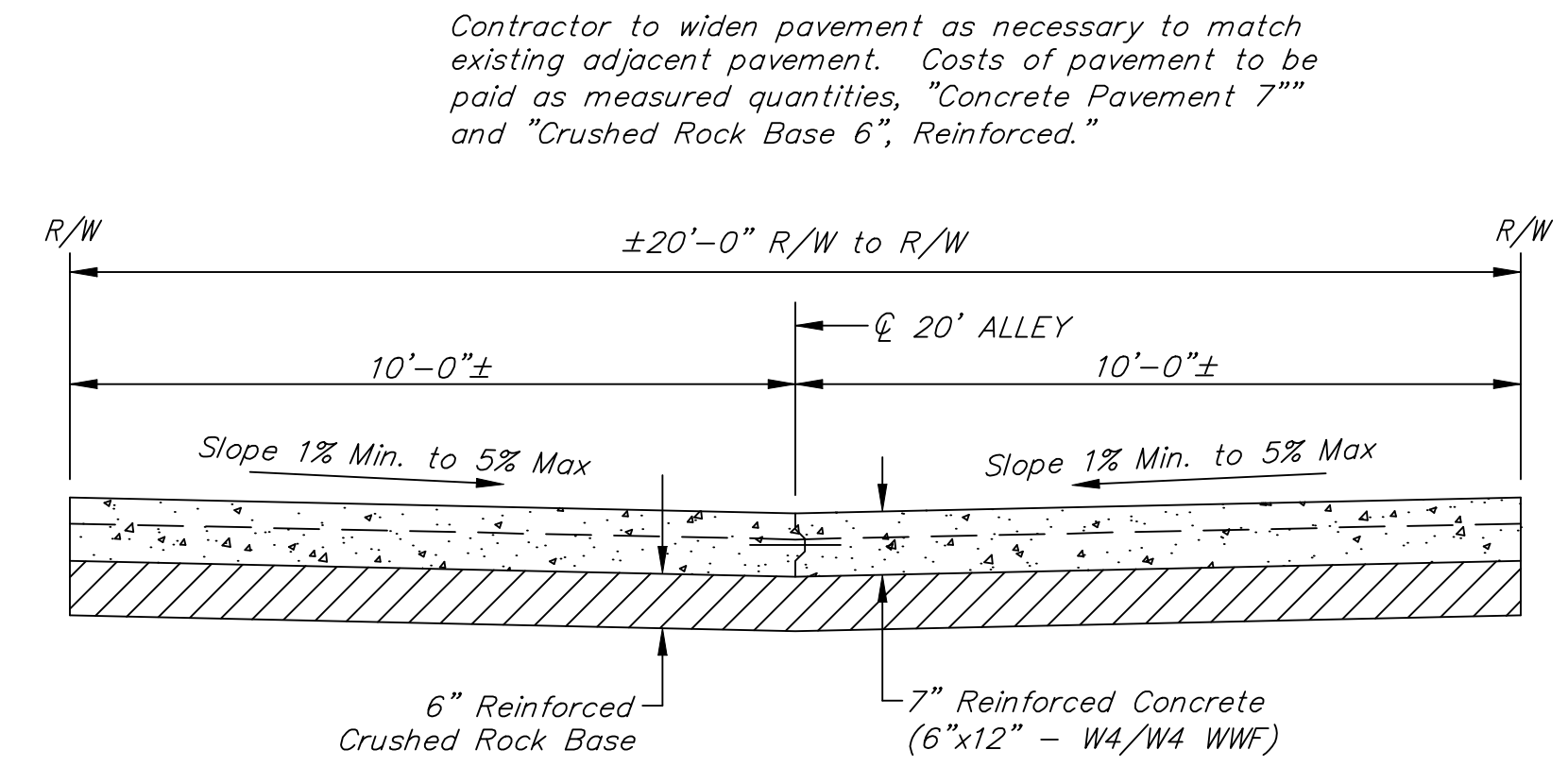
PLACE AT BEGINNING AND END OF PROPOSED ALLEY PAVEMENT



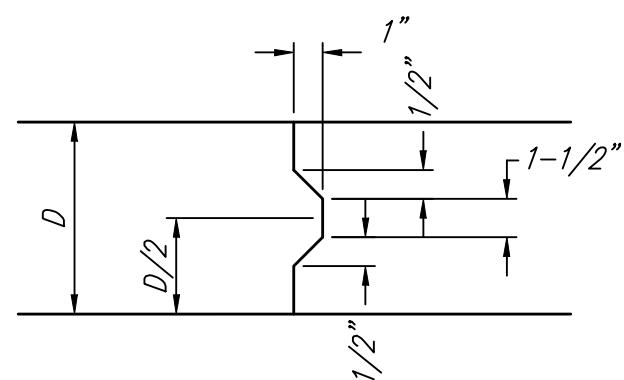
SAW JOINT DETAIL "B"



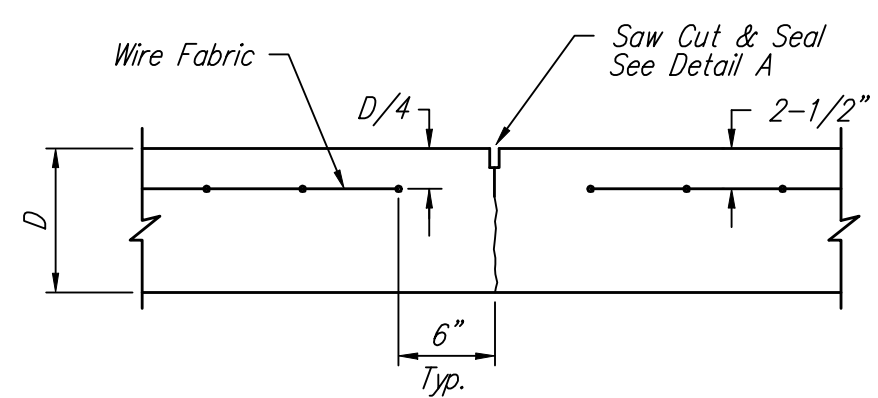
SAW JOINT DETAIL "A"



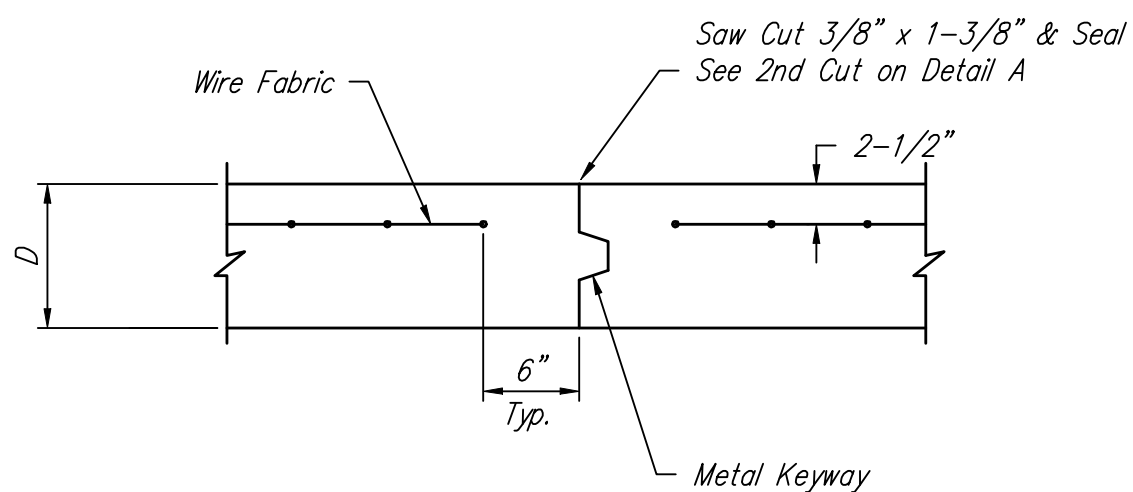
TYPICAL PAVEMENT SECTION



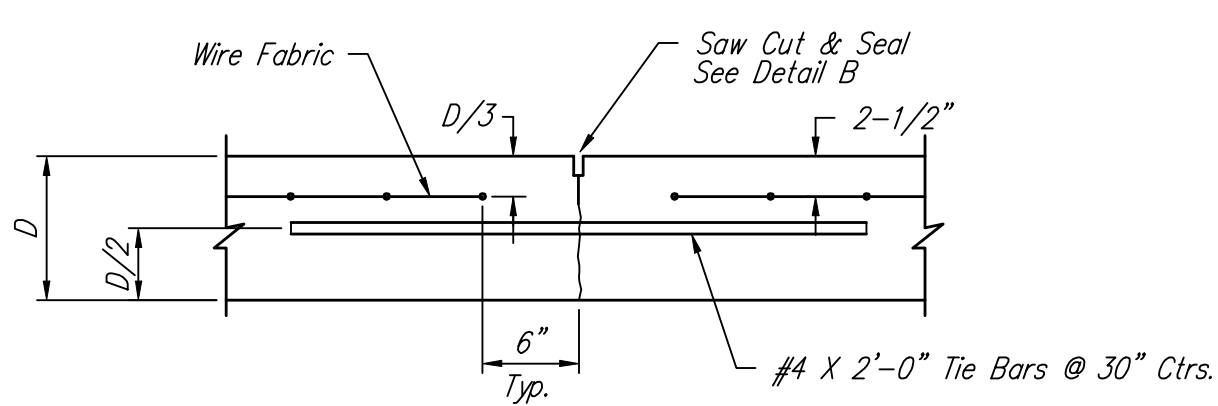
KEYWAY DETAIL



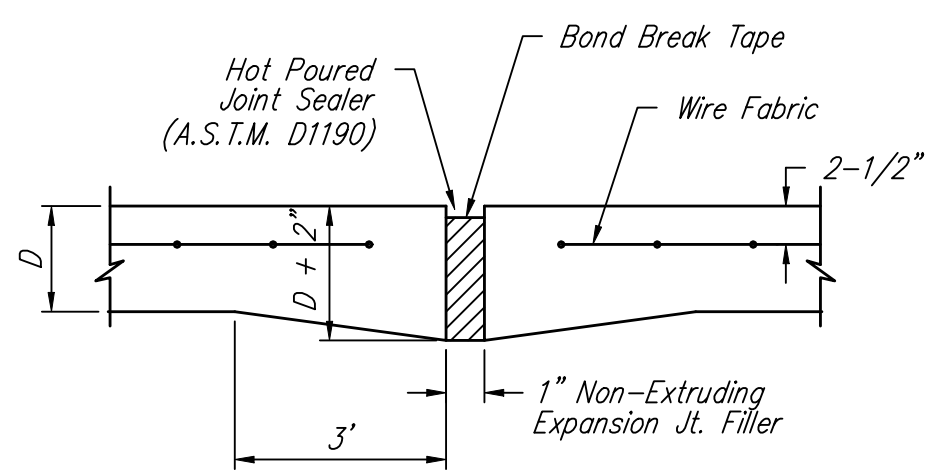
CONTRACTION JOINT DETAIL (C.J.)



**OPTIONAL CONTRACTION JOINT
(CONSTRUCTION JOINT)**

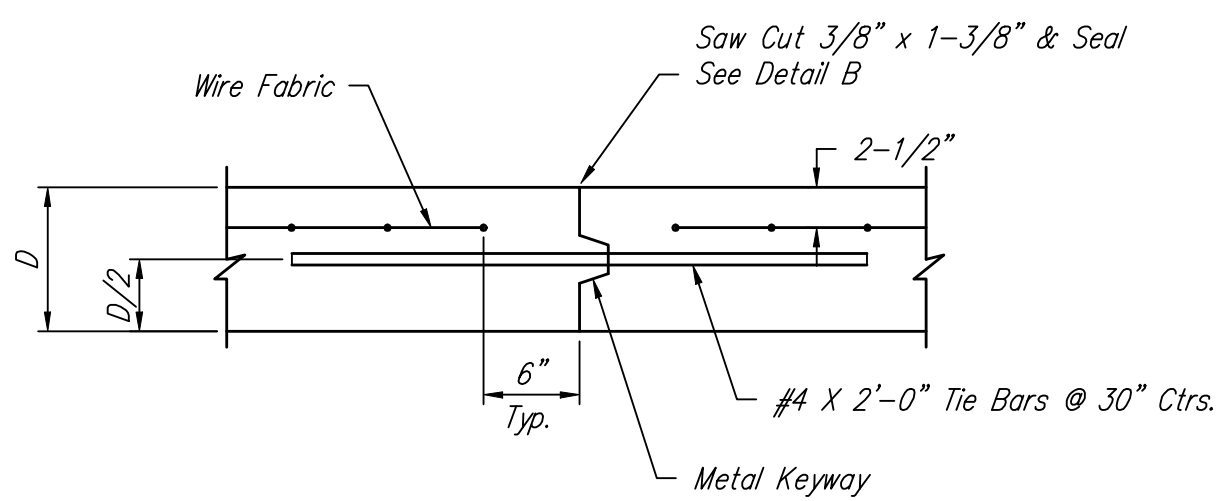


LONGITUDINAL JOINT DETAIL (L.J.)

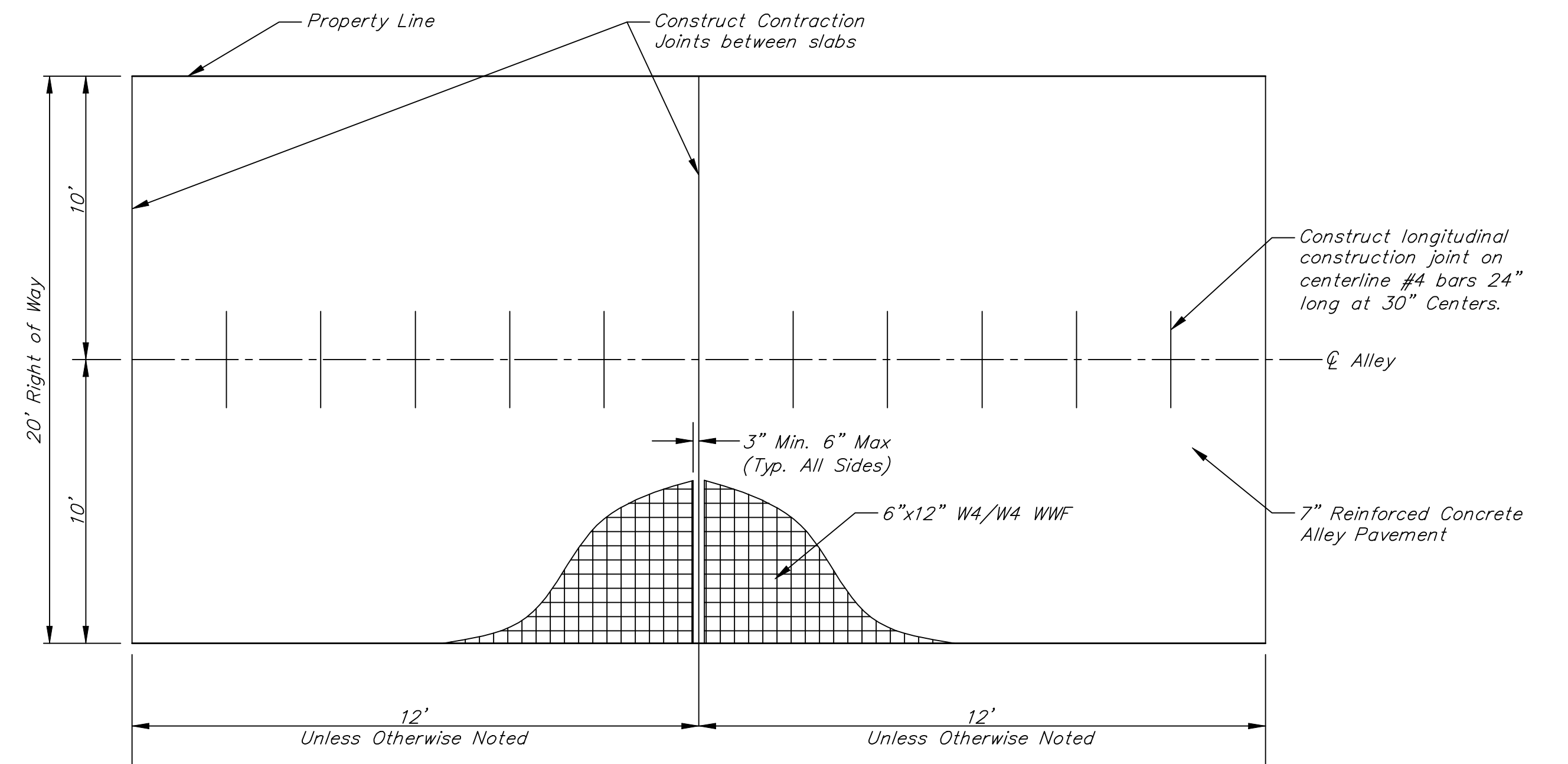


EXPANSION JOINT

NOTE: Extra Thickness to be Subsidiary to Price of Square Yards Pavement
250' MAXIMUM SPACING



**OPTIONAL LONGITUDINAL JOINT DETAIL (L.J.)
(CONSTRUCTION JOINT)**



SLAB REINFORCEMENT DETAIL

NOTE: 6" X 12" W4XW4 Wire Fabric Reinforcing Shall Be Placed So That The Wires With The 6" Spacing Will Run Parallel With The Longitudinal Joints.

Baughman		Alley Street Paving Paving Details Alley Improvements	
Baughman Company, P.A. 315 Ellis St. Wichita, KS 67211 P 316-262-7271 F 316-262-0149 ENGINEERING SURVEYING PLANNING LANDSCAPE ARCHITECTURE			
PROJECT NUMBER	DESIGN AEG	DRAWN TNT	
REVISIONS:	APPROVED AEG	DATE 1/14/2011	
SCALE NONE		SHEET 2 OF 10	
1004E546			