

WATER DISTRIBUTION SYSTEM

LOTS 1-3, BLOCK 1 CORNFIELD ADDITON

PROJECT NO. 448-90458 OCA NO. 735448

GENERAL NOTES

1. Contractor will be required to provide a minimum advance notice of seventy-two (72) hours to utility companies prior to starting any excavation as follows:

Kansas One-Call	1-800-DIG-SAFE
-----------------	----------------
2. The Contractor must notify the following in case of an emergency:

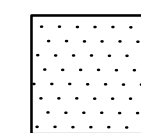
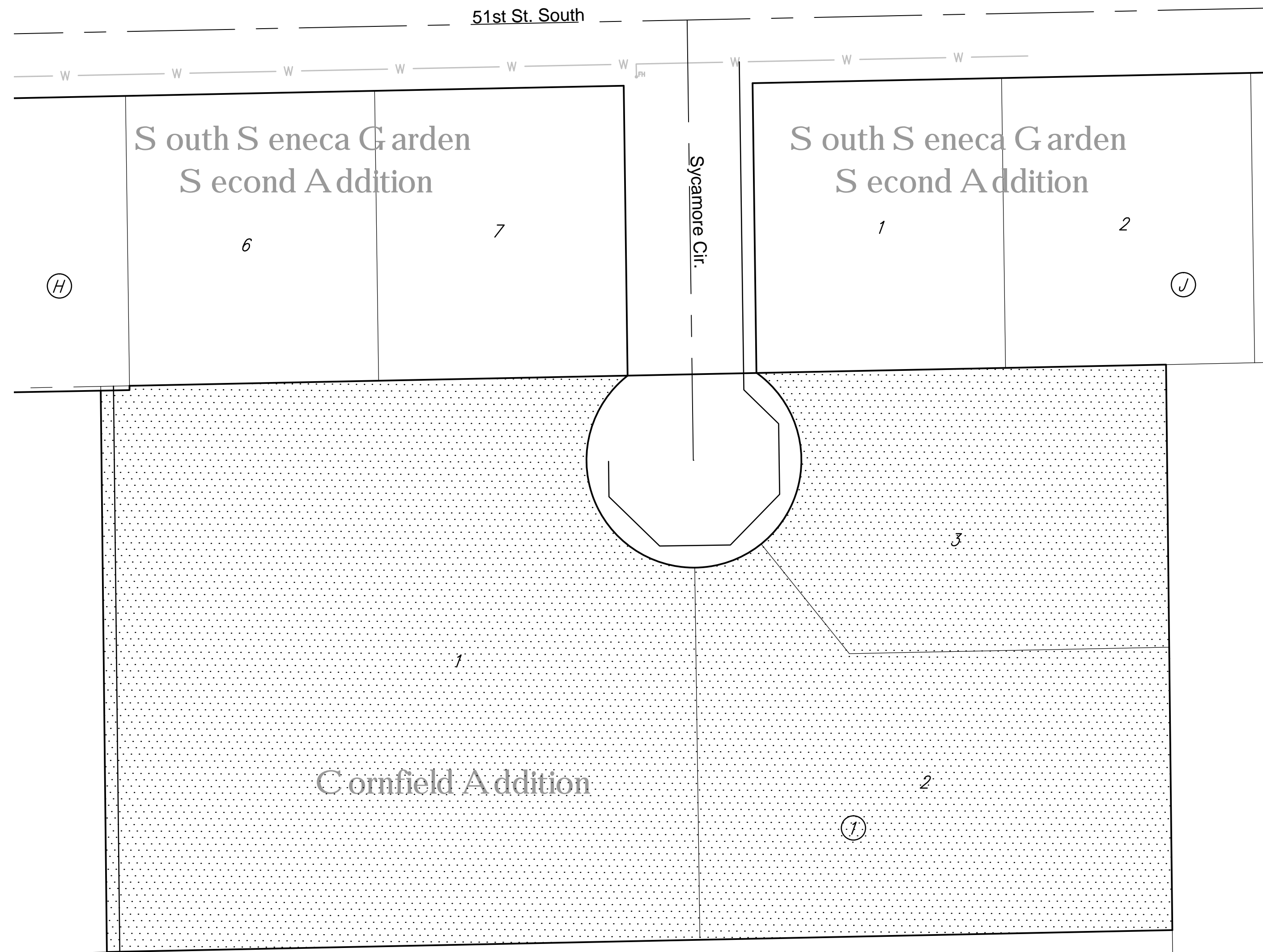
Cox Communications	262-0661
Kansas Gas Service	383-8600
Westar	383-8600
Aquila	1-800-303-0357
SBC	1-800-286-8313
City of Wichita Water Department	262-6000
City of Wichita Sewer Maintenance	262-6000
3. Underground utility service lines and overhead utility pole lines are to be adjusted as necessary by others prior to construction unless the plans specifically call for their adjustment by the Contractor or unless the plans specifically identify a utility to be adjusted by its owner during construction. Existing utilities and their location, as shown on the plans, represent the best information obtainable for design. Location information has been obtained from the various utility companies and is either from company record drawings or company-provided field locations. The Contractor will be required to work around existing utilities within the right-of-way which do not conflict with proposed construction.
4. Rubble from the removal of miscellaneous structures and excess excavation which is to be wasted shall be disposed of on sites to be provided by the Contractor. These sites shall be approved by the Engineer as to suitability, appearance and site location. Locations that, in the opinion of the Engineer, will leave an unsightly appearance will not be approved.
5. All disposal sites must be approved by the Kansas Department of Health and Environment. Material either stockpiled or disposed of in a flood plain would require a Kansas State Board of Agriculture permit. Any material dumped in waters of the United States or wetlands is subject to U.S. Corps permitting regulations. Any material buried or stockpiled beyond approved of Engineers construction limits would require additional archeological investigations unless buried in a previously approved borrow location.
6. The Engineer shall take field ties to all quarter section corners. The Contractor shall set a City survey monument in the required location where such quarter section corners fall within the limits of pavement construction. Survey monuments will be furnished by the City. The Engineer will accurately locate and install the iron at the quarter section corner. This work will not be paid for directly, but shall be considered subsidiary to the other pay items of work in the contract.
7. The Contractor shall give all property owners and/or tenants of developed property directly abutting the construction of this project a minimum of ten (10) days advance notice prior to start of construction.
8. The Contractor shall seed, fertilize and mulch all disturbed areas upon completion of construction in accordance with City of Wichita standard specifications.
9. The water main shall be constructed on the alignment shown by the plans. Trees and shrubs in public right-of-way or easement which are in direct conflict with proposed new construction shall be removed by the Contractor with the Engineer's approval. Trees and shrubs which are not in direct conflict with proposed new construction shall be saved and protected from damage. The cost for any necessary tree trimming, clearing and/or grubbing shall be included in the price bid for the installed water main pipe.
10. Opening and closing water valves shall be done slowly to prevent damage to the water distribution system from water hammer. All valves closed by the Contractor must be reopened as new construction permits. Project inspector must ascertain that any valve closed by the Contractor is reopened. Contractor will be permitted to operate water valves only when the project inspector assigned to the project is present.
11. Contractor shall not start work on the project until the project inspector is assigned to the project and is present on the site. Any work done without inspection will be required to be uncovered for inspection.
12. The Contractor shall be responsible for preserving property irons. The Contractor will be required to re-establish any property irons which are damaged or destroyed by his construction operations. Such irons shall be re-established by a licensed land surveyor in accordance with state laws.
13. Pavement removal and/or replacement will be incidental to other items of work. Minimum limits of such pavement removal and replacement shall be one foot beyond the limits of the excavation made for the water line or the structure, except when such saw cuts are within three (3) feet of an existing joint the limits of removal shall be extended to the existing joint. Removal and replacement of existing pavement shall conform to the applicable sections of the City of Wichita Standard Specifications.
14. All trees shall be protected to the extent possible. Trees may only be removed with the permission of the Engineer.
15. Prior to construction, the contractor shall excavate the existing waterline at the connection points to verify pipe size, horizontal, and vertical location. The contractor shall notify the engineer so that any plan modifications may be made. Any additional labor or materials necessary to complete the connection shall be considered subsidiary to the project.

BENCH MARKS

BENCH MARK: CHISELED "S" SQUARE ON THE TOP OF CURB AT THE EAST CURB RETURN AT THE NORTH EAST CORNER OF SYCAMORE AND 51ST ST. N. ELEVATION = 1271.31 (NAVD88)

INDEX

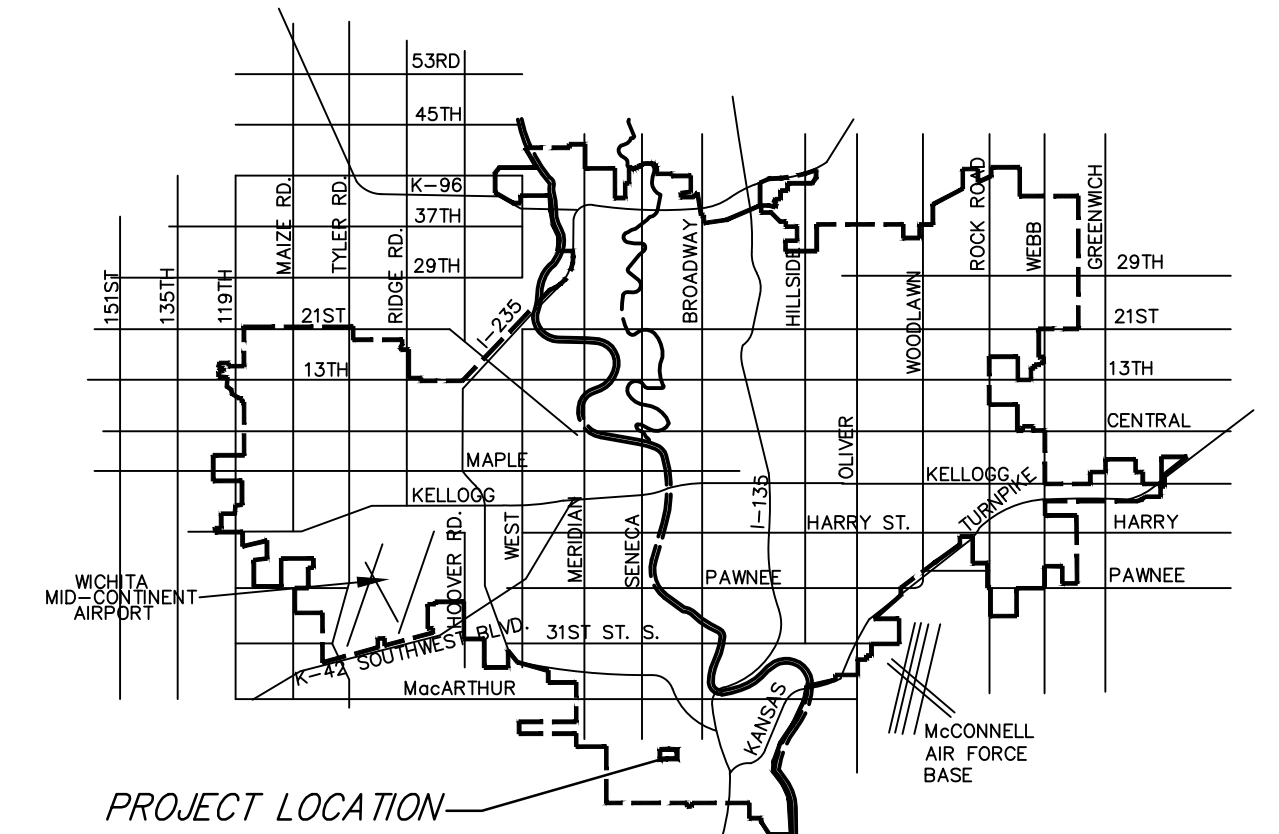
1. TITLE SHEET
2. STANDARD DETAILS
3. LINE 1 PLAN/PROFILE
- 4-8. EROSION CONTROL DETAILS



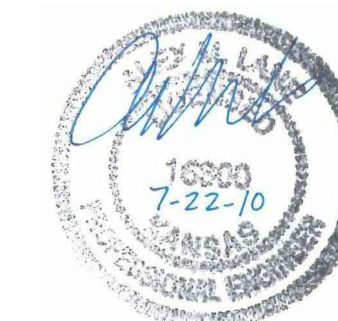
IMPROVEMENT DISTRICT



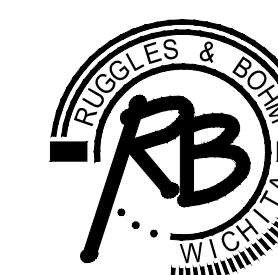
Scale: 1" = 40'



VICINITY MAP



CITY OF WICHITA, KANSAS
JAMES ARMOUR, P.E. - CITY ENGINEER



Ruggles & Bohm, P.A.
Engineering, Surveying, Land Planning
924 North Main (316) 264-8008
Wichita, Kansas 67203 (316) 264-4621 fax
www.rbkansas.com E-mail: info@rbkansas.com