

SANITARY SEWER PLANS

AVALON PARK 3RD ADDITION

PHASE 2

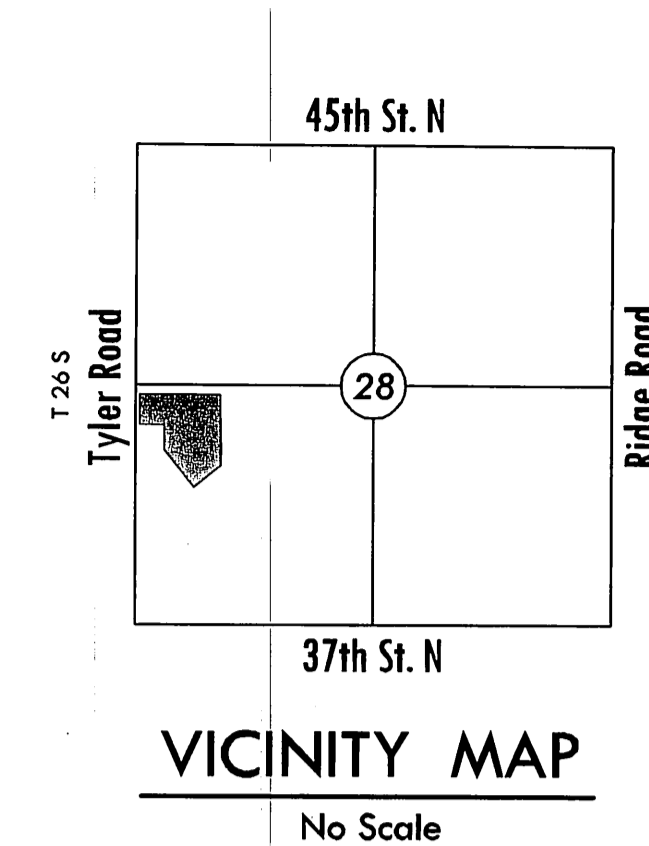
LATERAL 22, MAIN 19, SOUTHWEST INTERCEPTOR

PROJECT NO. 468-84010

THE CITY OF WICHITA, KANSAS
JAMES L. ARMOUR, CITY ENGINEER

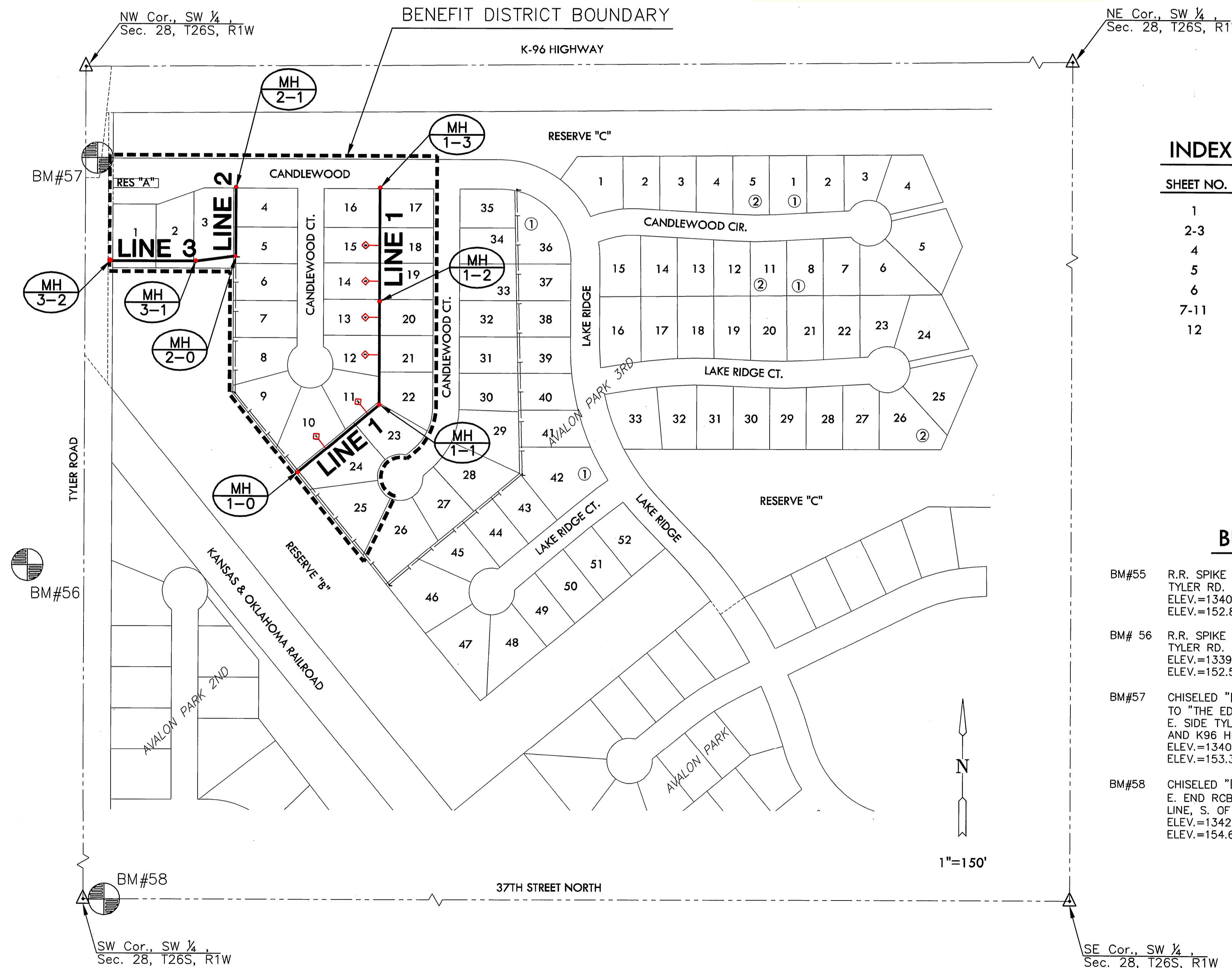
OCA 744317

CK CONTRACTING - CONTRACTOR
J. TERHUNE - CITY OF WICHITA, FIELD PROJECT ENGINEER
M. THOM - CITY OF WICHITA, INSPECTOR
RISERS
AS-BUILT
RELEASE DATE: PENDING AIR TEST
PDF: A ROSAS 2/1/2011



GENERAL NOTES

- UNLESS SHOWN OR STATED OTHERWISE ON THESE DRAWINGS, MATERIALS AND CONSTRUCTION SHALL BE IN ACCORDANCE WITH CITY OF WICHITA STANDARD SPECIFICATIONS.
- CONTRACTOR WILL BE REQUIRED TO PROVIDE A MINIMUM ADVANCE NOTICE OF SEVENTY-TWO (72) HOURS TO UTILITY COMPANIES PRIOR TO STARTING ANY EXCAVATION AS FOLLOWS:
KANSAS ONE-CALL 1-800-344-7233 or 687-2470 (LOCAL WICHITA)
THE CONTRACTOR MUST NOTIFY THE FOLLOWING IN CASE OF AN EMERGENCY:
SBC (TELEPHONE) 800-870-8390
COX COMMUNICATIONS (CABLE) 262-0661
KANSAS GAS SERVICE (GAS) 832-3101
CITY OF WICHITA WATER & SEWER 262-5000
WESTAR (ELECTRIC) 261-6512
BLACK HILLS ENERGY (GAS) 800-303-0357
- THE CONTRACTOR SHALL BE RESPONSIBLE FOR PRESERVING PROPERTY IRONS. THE CONTRACTOR WILL BE REQUIRED TO ESTABLISH ANY PROPERTY IRONS WHICH ARE DAMAGED OR DESTROYED BY HIS CONSTRUCTION OPERATIONS. SUCH IRONS SHALL BE RE-ESTABLISHED BY A LICENSED LAND SURVEYOR IN ACCORDANCE WITH STATE LAWS.
- EXISTING UTILITIES AND THEIR LOCATIONS, AS SHOWN ON THE PLANS REPRESENT THE BEST INFORMATION OBTAINABLE FOR DESIGN. LOCATION INFORMATION HAS BEEN OBTAINED FROM THE VARIOUS UTILITY COMPANIES AND IS EITHER FROM COMPANY RECORD DRAWINGS OR COMPANY PROVIDED FIELD LOCATIONS. THE PLAN LOCATIONS SHOWN ARE NOT GUARANTEED. ADDITIONAL EXISTING UTILITIES MAY ALSO BE ENCOUNTERED.
- RUBBLE FROM THE REMOVAL OF MISCELLANEOUS STRUCTURES AND EXCESS EXCAVATION WHICH IS TO BE WASTED SHALL BE DISPOSED OF ON SITES TO BE PROVIDED BY THE CONTRACTOR. THESE SITES SHALL BE APPROVED BY THE ENGINEER AS TO SUITABILITY, APPEARANCE AND SITE LOCATION. LOCATIONS THAT, IN THE OPINION OF THE ENGINEER, WILL LEAVE AN UNSIGHTLY APPEARANCE WILL NOT BE APPROVED. ALL DISPOSAL SITES MUST BE APPROVED BY THE KANSAS DEPARTMENT OF HEALTH AND ENVIRONMENT. MATERIAL EITHER STOCKPILED OR DISPOSED OF IN A FLOOD PLAIN WOULD REQUIRE A KANSAS STATE BOARD OF AGRICULTURE PERMIT. ANY MATERIAL DUMPED IN WATERS OF THE UNITED STATES OR WETLANDS IS SUBJECT TO U.S. CORPS OF ENGINEERS PERMITTING REGULATIONS. ANY MATERIAL BURIED OR STOCKPILED BEYOND APPROVED CONSTRUCTION LIMITS WOULD REQUIRE ADDITIONAL ARCHAEOLOGICAL INVESTIGATIONS UNLESS BURIED IN A PREVIOUSLY APPROVED BORROW LOCATION.
- COST OF EXCAVATION, HAULING, AND DUMPING OF EXCESS EXCAVATION SHALL BE SUBSIDIARY TO THE PROJECT.
- A PORTION OF EXCESS EXCAVATED MATERIAL SHALL BE MOUNDING AROUND MANHOLES WHICH EXTEND MORE THAN ONE (1) FOOT ABOVE THE EXISTING GROUND. SUCH MOUNDS SHALL BE CONSTRUCTED WITH A SIX (6) FOOT DIAMETER FLAT TOP WITH 4 TO 1 SIDE SLOPES DOWN TO THE ORIGINAL GROUND. THE ELEVATION OF THE FLAT TOP OF THE MOUND SHALL BE 0.4 FOOT BELOW THE TOP OF THE MANHOLE.
- ALL STUBS AND PLUGGED PIPES SHALL BE LOCATED WITH GREEN PLASTIC TAPE IN THE SAME MANNER AS RISERS.
- CONNECTING TO EXISTING MANHOLES:
PRIOR TO LAYING SEWER LINES USING EXISTING STUBS IN EXISTING MANHOLES, THE CONTRACTOR SHALL EXPOSE AND VERIFY THE ELEVATION, GRADE AND ALIGNMENT OF EXISTING STUBS AND NOTIFY THE ENGINEER OF ANY DEVIATION FROM THE PLAN. WHERE CONNECTION TO AN EXISTING MANHOLE THAT DOES NOT HAVE AN EXISTING STUB OR THE STUB IS UNUSABLE DUE TO ELEVATION GRADE OR ALIGNMENT, THE CONTRACTOR SHALL BORE OUT INTO EXISTING MANHOLE WALL TO MAKE CONNECTION USING APPROVED WATER STOP GASKET, AND RESHAPE THE EXISTING MANHOLE INVERT TO PROVIDE SMOOTH FLOW. THE COST OF CONNECTING TO EXISTING MANHOLES IS INCIDENTAL TO THE PROJECT.
- TREES AND SHRUBS IN PUBLIC RIGHT-OF-WAY WHICH ARE IN DIRECT CONFLICT WITH PROPOSED NEW CONSTRUCTION SHALL BE REMOVED BY THE CONTRACTOR WITH THE ENGINEER'S APPROVAL. TREES AND SHRUBS WHICH ARE NOT IN DIRECT CONFLICT WITH PROPOSED NEW CONSTRUCTION SHALL BE SAVED AND PROTECTED FROM DAMAGE.
- ALL DISTURBED AREAS TO BE SEEDING WITH RYE GRASS AT A RATE OF 200 LBS. PER ACRE WITHIN 10 DAYS OF CONSTRUCTION. CONTRACTOR TO PREPARE GROUND PER CITY SPECIFICATIONS. COST IS SUBSIDIARY TO SITE PREPARATION AND RESTORATION.
- CONTRACTOR TO COORDINATE CONSTRUCTION OF SANITARY SEWER LINES WITH OTHER CONSTRUCTION ACTIVITIES ON SITE. THIS INCLUDES WATER, AND STORM WATER SEWER CONSTRUCTION PROJECTS.
- DEVELOPER FOR THIS PROJECT IS:
MARVIN SCHELLENBERG
7926 W. 21st ST. NORTH, #200
WICHITA, KS 67205
CONTACT - MARVIN SCHELLENBERG
(316) 721-2153



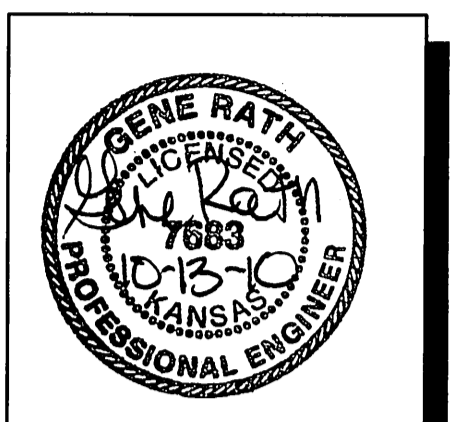
INDEX TO DRAWINGS

SHEET NO.	DESCRIPTION
1	TITLE SHEET
2-3	DETAILS
4	LINE 1
5	LINE 2 & 3
6	BUBBLE MAP
7-11	BMP DETAILS
12	PLATS

BENCHMARKS

- BM#55 R.R. SPIKE IN E. FACE POWER POLE W. SIDE TYLER RD. AT HOUSE #3915
ELEV.=1340.28 N.G.V.D.
ELEV.=152.88 CITY DATUM
- BM# 56 R.R. SPIKE IN E. FACE POWER POLE W. SIDE TYLER RD. 2ND POLE S. OF R.R. TRACKS
ELEV.=1339.98 N.G.V.D.
ELEV.=152.58 CITY DATUM
- BM#57 CHISELED "□" ON S. END RCP AT ENTRANCE TO "THE EDGE" PAINTBALL ADVENTURES, E. SIDE TYLER RD. BETWEEN R.R. TRACKS AND K96 HIGHWAY.
ELEV.=1340.74 N.G.V.D.
ELEV.=153.34 CITY DATUM
- BM#58 CHISELED "□" ON S. END CONCRETE HEADWALL, E. END RCB UNDER TYLER RD. AT 1/2 MILE LINE, S. OF K96 HIGHWAY.
ELEV.=1342.03 N.G.V.D.
ELEV.=154.63 CITY DATUM

MKEC
ENGINEERING
CONSULTANTS, INC.
411 N. WEBB ROAD
WICHITA, KS. 67206
316-684-9600



SANITARY SEWER PLANS FOR
AVALON PARK 3RD ADDITION
PHASE 2

TITLE SHEET
SHEET TITLE
468-84010
PROJECT NUMBER

DFL / JWC / GJA
DESIGNED DRAWN CHECKED

ISSUED
October 2010
REVISED

SHEET NO.
1 of 12

PLOTED: Tuesday, October 12, 2010 @ 08:37PM

J:\PROJECTS\2010\10228_AVALON PARK\CADD\CIVIL\SM\10228_B1.DWG