

SANITARY SEWER LIFT STATION AND FORCE MAIN
BOTANICA - THE WICHITA GARDENS
STREETS AND UTILITIES

STA. 10+00.00 TO
STA. 10+14.7, FM
CONST. LIFT STATION,
PIPING, AND 59 S.Y.
OF 6" THICK GRAVEL
ACCESS DRIVE (SEE
SHEET 2)

5.4' OF 2" PIPE
SIM PARK DR.
PROP. 8" WATER

STA. 10+20.0 TO
STA. 10+85.0, FM
60 L.F. OF 2" PIPE
BY DIRECT DRILL

59.7' OF 2" PIPE
STA. 11+34.3, FM
1-2" 90° BEND

COW TOWN

367.6' OF 2" PIPE
FORCE MAIN

49.4' OF 2" PIPE
STA. 15+33.5
STA. 15+01.9, FM
1-2" 30° BEND
90°

SCALE: 1" = 40'
0 20 40 80

STA. 15+51.3, FM
1-2" 45° BEND

COW TOWN

CAUTION!!
UNDERGROUND
UTILITIES

STA. 18+24.9, FM
PROVIDE CONNECTION
TO EXISTING MANHOLE

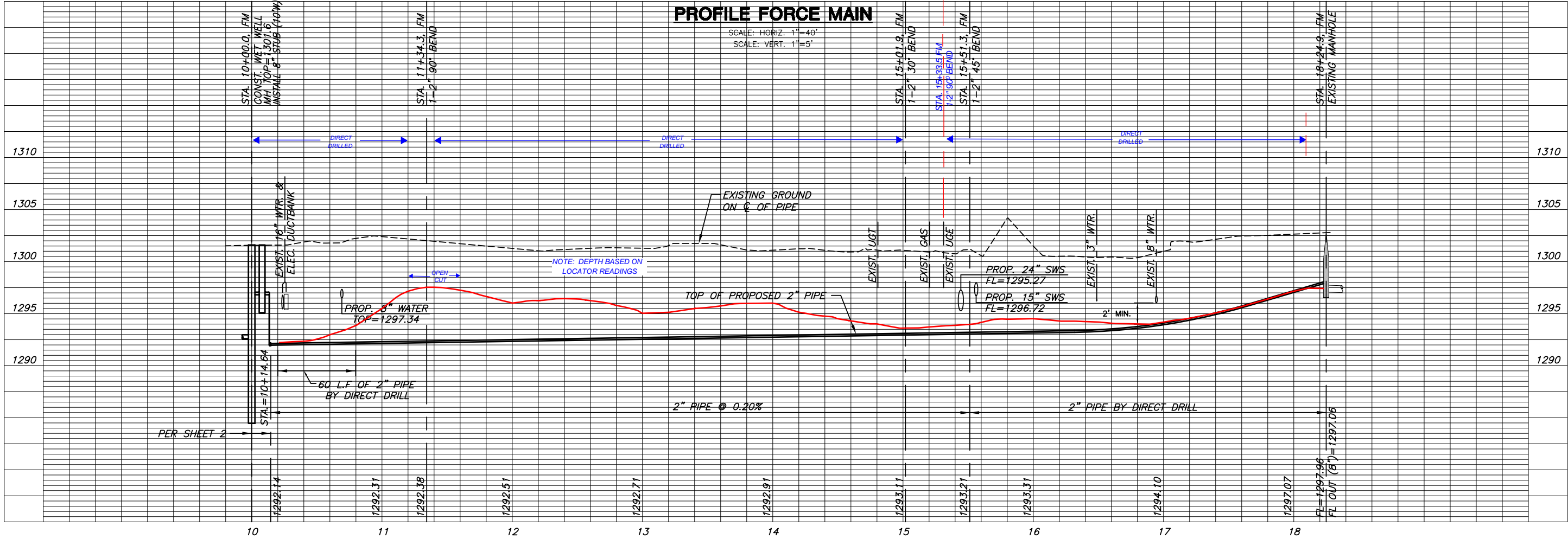
273.6' OF 2" PIPE
BY DIRECT DRILL

EXISTING SSMH
MH TOP=1302.76
FL OUT=1297.06 (8"E)

- NOTES:**
1. CONTRACTOR TO VERIFY DEPTH AND LOCATION OF EXISTING UTILITIES PRIOR TO CONSTRUCTION.
 2. CONTRACTOR TO MAINTAIN PEDESTRIAN ACCESS TO COW TOWN AT ALL TIMES DURING CONSTRUCTION. COST SUBSIDIARY TO PROJECT.

REMOVE AND REPLACE EXIST. SIDEWALK TO THE NEAREST JOINT AS NECESSARY FOR CONSTRUCTION. COST SUBSIDIARY TO PROJECT.

PLAN FORCE MAIN



FORCE MAIN
SHEET TITLE
468-84683
PROJECT NUMBER

DESIGN BY: AJK
DRAWN BY: DMU
CHECKED BY: AJK

ISSUED: July 2010
REVISED:

SHEET NO.
4 of 29