

SANITARY SEWER LIFT STATION AND FORCE MAIN
BOTANICA - THE WICHITA GARDENS
STREETS AND UTILITIES

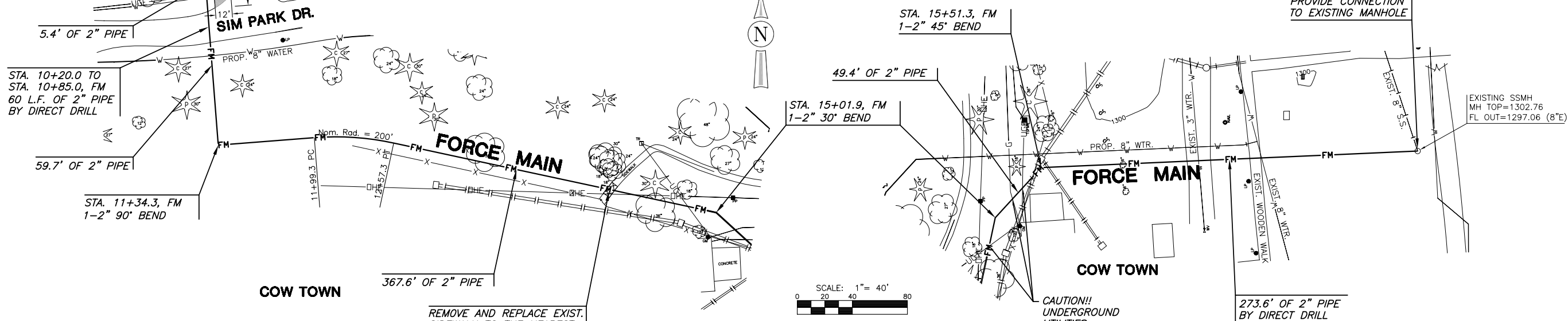
STA. 10+00.00 TO
STA. 10+14.7, FM
CONST. LIFT STATION,
PIPING, AND 59 S.Y.
OF 6" THICK GRAVEL
ACCESS DRIVE (SEE
SHEET 2)

STA. 10+20.0 TO
STA. 10+85.0, FM
60 L.F. OF 2" PIPE
BY DIRECT DRILL

STA. 11+34.3, FM
1-2" 90° BEND

STA. 15+51.3, FM
1-2" 45° BEND

STA. 18+24.9, FM
PROVIDE CONNECTION
TO EXISTING MANHOLE



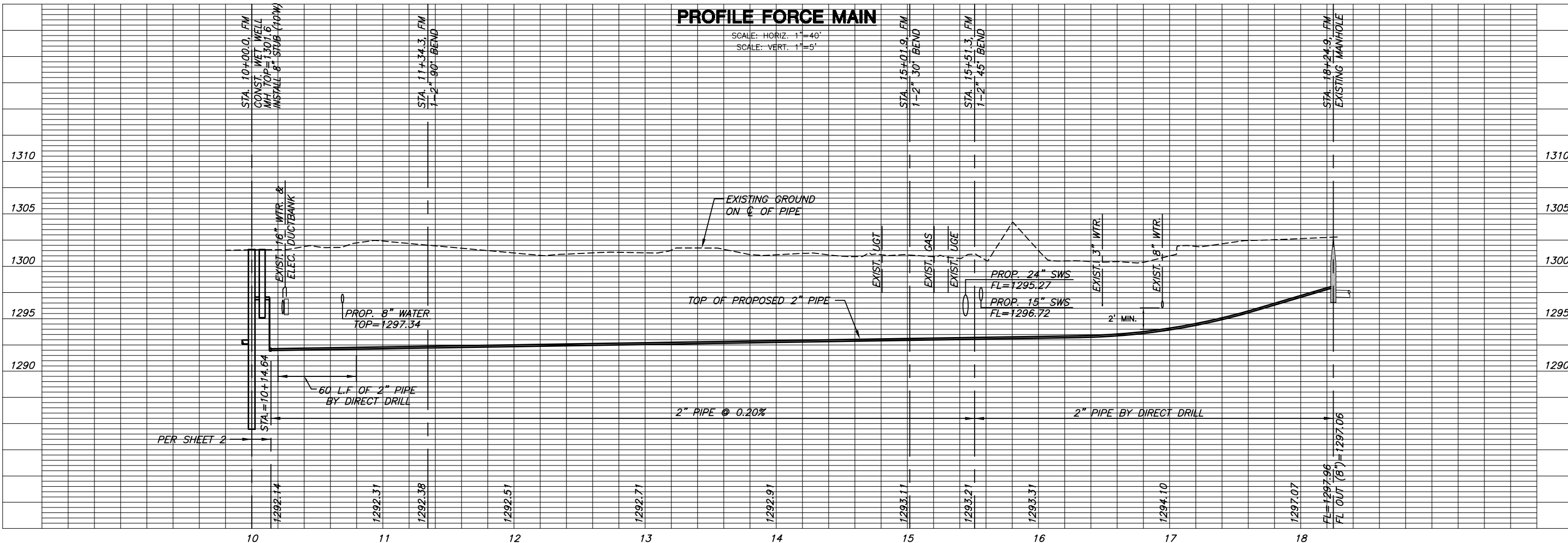
- NOTES:**
1. CONTRACTOR TO VERIFY DEPTH AND LOCATION OF EXISTING UTILITIES PRIOR TO CONSTRUCTION.
 2. CONTRACTOR TO MAINTAIN PEDESTRIAN ACCESS TO COW TOWN AT ALL TIMES DURING CONSTRUCTION. COST SUBSIDIARY TO PROJECT.

REMOVE AND REPLACE EXIST. SIDEWALK TO THE NEAREST JOINT AS NECESSARY FOR CONSTRUCTION. COST SUBSIDIARY TO PROJECT.

PLAN FORCE MAIN

PROFILE FORCE MAIN

SCALE: HORIZ. 1"=40'
SCALE: VERT. 1"=5'



FORCE MAIN

SHEET TITLE
468-84683
PROJECT NUMBER

DESIGN BY: AJK
DRAWN BY: DMU
CHECKED BY: AJK

ISSUED: July 2010
REVISED:

SHEET NO.
4 of 29