

STATE OF KANSAS  
DEPARTMENT OF TRANSPORTATION



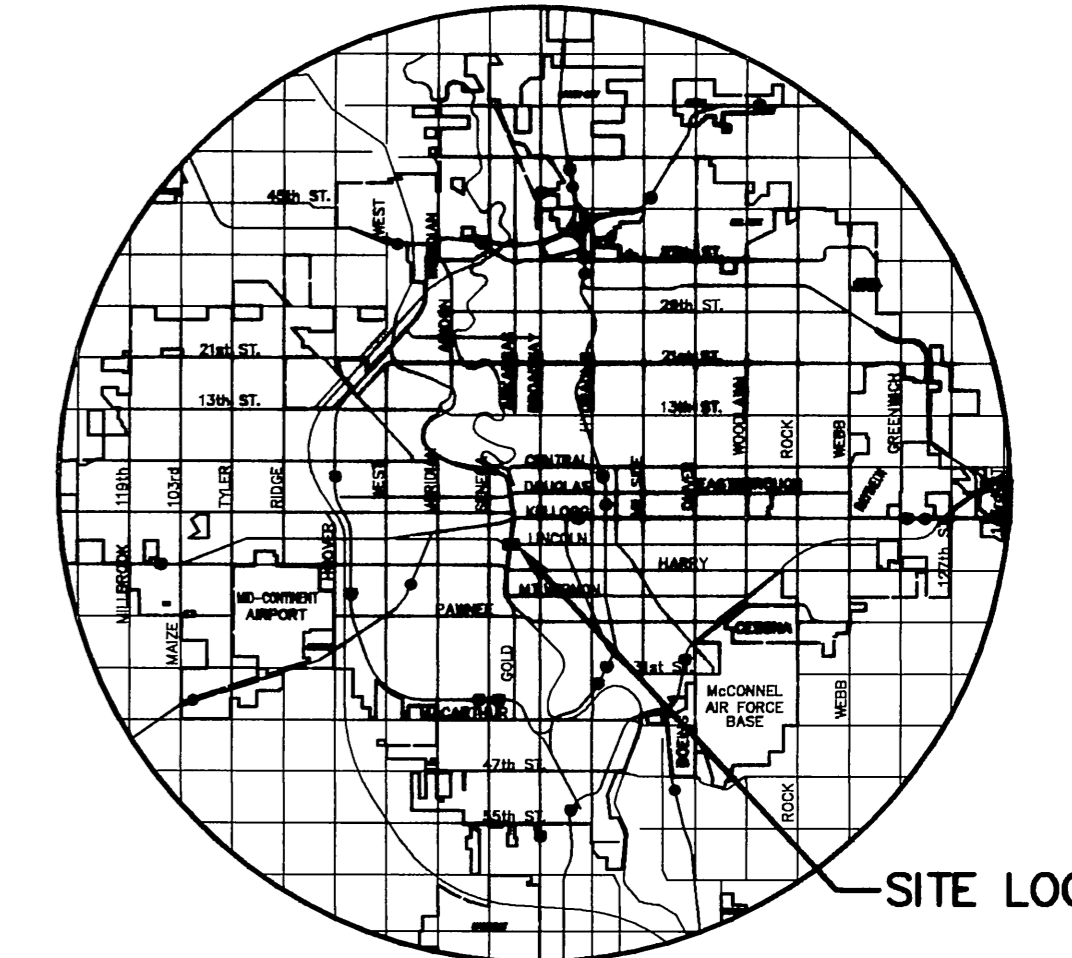
PLAN AND PROFILE OF PROPOSED  
LINCOLN STREET BRIDGE AND DAM IMPROVEMENTS  
OVER ARKANSAS RIVER  
FEDERAL AID PROJECT

WICHITA, SEDGWICK COUNTY, KANSAS

CITY OF WICHITA BRIDGE PROJECT NO. 472-84833 (OCA # 715724)

STATE	PROJECT NO.	YEAR	SHEET NO.	TOTAL SHEETS
KANSAS	87 N-0361-01	2010	1	169

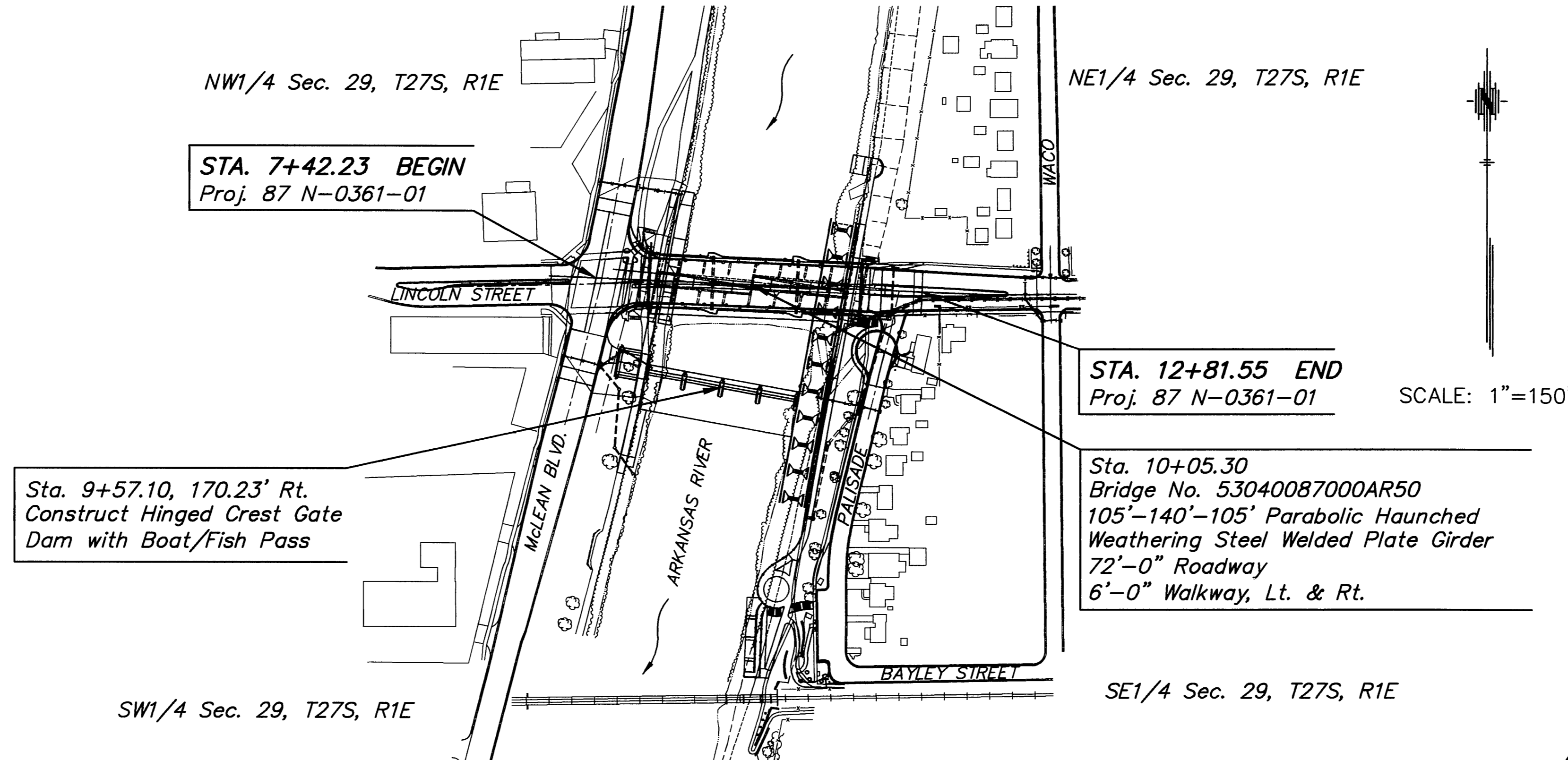
KDOT PROJ. NO. 87 N-0361-01  
FED. AID PROJ. NO. STP N036(101)  
GRADING  
BRIDGE  
DAM  
BOAT/FISH PASSAGE  
SEEDING



LOCATION MAP

DESIGN DESIGNATION

AADT (2006) = 10,200  
AADT (2028) = 16,500  
DHV = 10%  
D = 60%  
T = 2%  
V = 35 mph  
C of A = None  
Clear Zone = 6 Ft.



NOTE: PROJECT SHALL BE CLOSED FOR TRAFFIC THROUGHOUT CONSTRUCTION

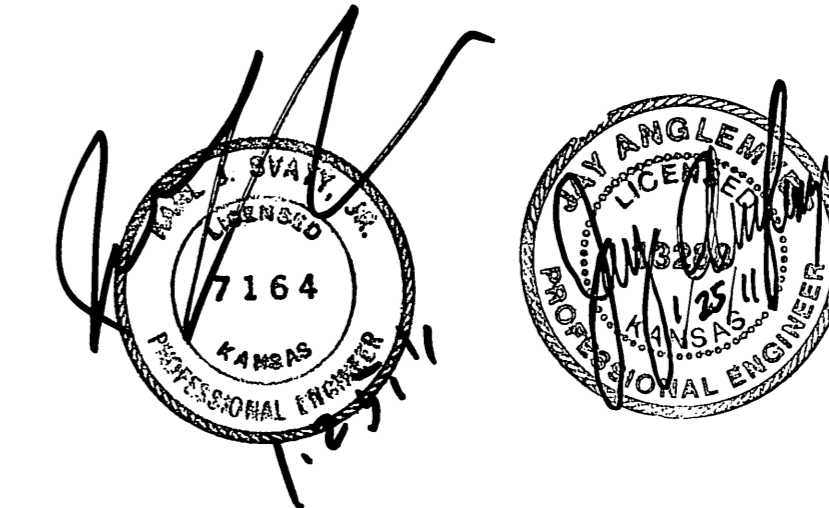
NOTE: THE PIPES ON THIS PROJECT ARE IN ACCORDANCE WITH THE CURRENT KDOT PIPE POLICY.

CONVENTIONAL SIGNS

COUNTY LINE . . . . .	CENTER LINE OF PROJECT . . . . .	TERRACE . . . . .
CITY LIMITS . . . . .	CULVERTS . . . . .	DROP INLET & STORM SEWER . . . . .
STATE OR NATIONAL LINE . . . . .	ACCESS CONTROL . . . . .	POWER POLE . . . . .
TOWNSHIP . SECTION or GRANT LINE . . . . .	TELEPHONE POLE . . . . .	MARSH . . . . .
PROPERTY LINE . . . . .	HEDGE . . . . .	TREES . . . . .
HIGHWAY FENCE . . . . .	PROFILE ELEVATION . . . . .	STREAM OR CREEK . . . . .
EXISTING FENCE . . . . .		
GUARD FENCE . . . . .		
CONSTRUCTION LIMITS . . . . .		
RIGHT OF WAY LINE . . . . .		
TRAVELED WAY . . . . .		
RAILROADS . . . . .		

GROSS LENGTH OF PROJECT	539.32 FT.
EXCEPTIONS	0.00 FT.
ADDITIONS	0.00 FT.

NET LENGTH OF PROJECT	539.32 FT.	0.09 MILES
NET LENGTH OF BRIDGES	352.50 FT.	0.07 MILES
NET LENGTH OF ROAD	186.82 FT.	0.02 MILES



PREPARED & SUBMITTED BY  
MKEC ENGINEERING CONSULTANTS, INC.  
WICHITA, KANSAS

RECOM. FOR APPROVAL-DATE 1-24-2011  
*Jim Armour*  
JIM ARMOUR, P.E.  
CITY ENGINEER