

P.O.T. Sta. 7+50.00  
 1. N 1680572.6747, E 1646942.8500  
 2. Not Set

Horizontal Control Pt. #2

1. Set 5/8" rebar with red "MKEC DESIGN POINT" cap Southeast corner of Lincoln and McLean
2. Sta. 7+84.35, 77.43' Rt.
3. Centerline McLean 48' W.
4. Centerline Lincoln 71' N.
5. N = 1680493.84, E = 1646973.85

Horizontal Control Pt. #1

1. Set 5/8" rebar with red "MKEC DESIGN POINT" cap Southwest corner of Lincoln and Palisade
2. Sta. 12+03.28, 48.96' Rt.
3. Centerline Palisade 32' E.
4. Centerline Lincoln 49' N.
5. N = 1680504.32, E = 1647393.58

**LEGEND**



Pavement Removal

**SCALE**



PLAN: Lat. & Long.  
 PROFILE: Horiz. same as above, Vert. 1" = 5'

Construct 9" R.C. Pavement with 6" Crushed Rock Base See Sh. No. 3, 14, 15

Sta. 10+00.00 Remove Br. No. 53040087000AR50 25'-33'-6 @ 42'-33'-25' Reinf. Conc. Slab Spans 8'00'00" Skew Rt. 70' Roadway Remove Bascule Dam

Sta. 10+05.30 Construct Br. No. 53040087000AR50 105'-140'-105' Parabolic Haunched Weathered Steel Welded Plate Girder 72'-0" Roadway, 6'-0" Walkway, Lt. and Rt. See Sh. No. 50

Sta. 11+81.55 Construct Conc. Bridge Approach Slab with Transition Rail See Sh. No. 8

Sta. 11+95 Abandon Exist. Conc. Vault in place Cap exist. water line and abandon water manhole

Construct 9" R.C. Pavement with 6" Crushed Rock Base See Sh. No. 3, 16

STA. 12+81.55 END Project No. 87 N-0361-01

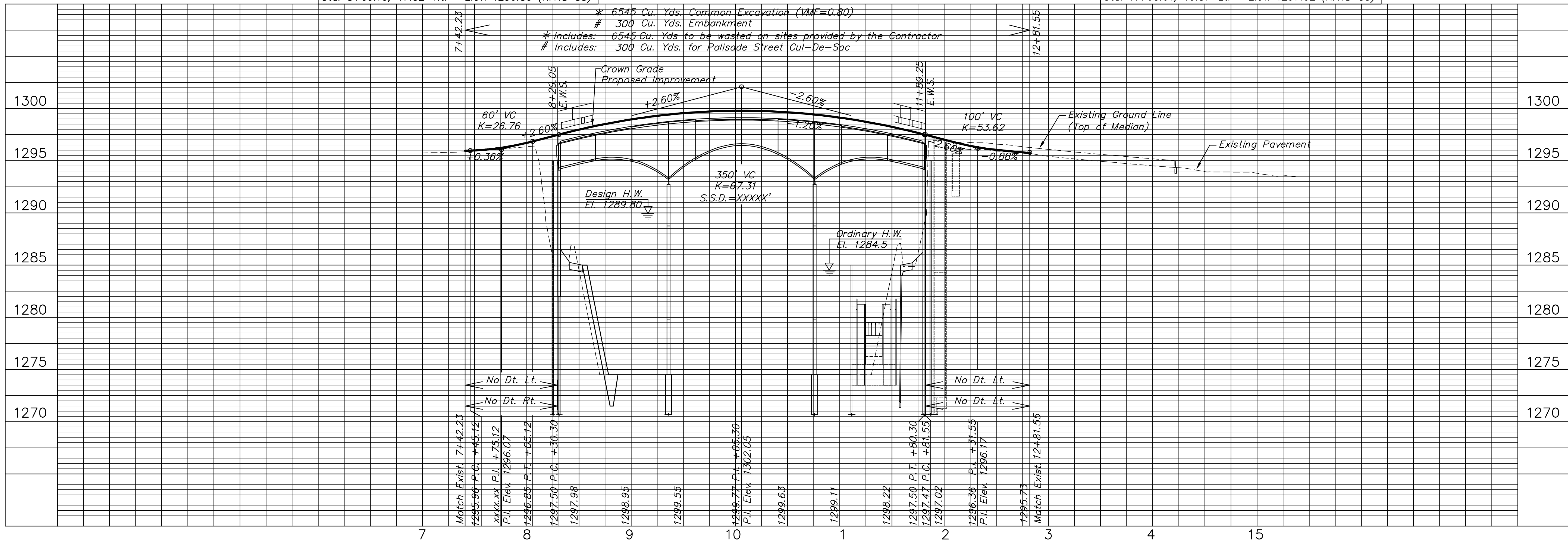
Palisade Cul-De-Sac: Construct 7" R.C. Pavement with 5" Crushed Rock Base See Sh. No. 3, 17

STA. 7+42.23 BEGIN Project No. 87 N-0361-01

Sta. 7+96.69 Construct Conc. Bridge Approach Slab with Transition Rail See Sh. No. 7

BM#1 C.O.W. Bench Mark disc at S.W. corner bridge, Lincoln and Arkansas River Sta. 8+09.10, 47.52' Rt. Elev. 1296.80 (NAVD 88)

BM#2 C.O.W. Bench Mark disc at N.W. corner bridge, Lincoln and Arkansas River (stamped 1296.62) Sta. 11+63.61, 40.81' Lt. Elev. 1297.02 (NAVD 88)



STATE	PROJECT NO.	YEAR	SHEET NO.	TOTAL SHEETS
KANSAS	87 N-0361-01	2011	4	169

P.I. Sta. 13+89.26  
 1. N 1680545.2582, E 1647581.5170  
 2. Not Set

- Horizontal Control Pt. #107
1. Set 3/4" pipe in thimble in pavement at Lincoln and Waco
  2. Sta. 14+93.76, 29.52' Lt.
  3. Centerline Waco Street 0' W.
  4. Centerline Lincoln 30' S.
  5. N = 1680575.23, E = 1647685.90

**UTILITIES**

AT&T  
 Attn: John Fagan  
 154 N. Broadway, Room 210  
 Wichita, Ks. 67202  
 Phone (316) 268-2102

C.O.W. Water/Sewer  
 Attn: Greg Lolley  
 455 N. Main St.  
 Wichita, Kansas 67202  
 Phone (316) 268-4555

C.O.W. Storm Sewer  
 Attn: Jeff Rupp  
 455 N. Main St.  
 Wichita, Kansas 67202  
 Phone (316) 268-4326

Kansas Gas Service  
 Attn: James Coe  
 1021 East 26th Street North  
 Wichita, Kansas 67219  
 Phone (316) 832-3126

Westar Energy  
 Attn: Miles Capps  
 1900 E. Central  
 Wichita, Kansas 67201  
 Phone (316) 261-6824



411 N. WEBB ROAD  
 WICHITA, KS. 67206  
 316-684-9600

**LINCOLN STREET BRIDGE AND DAM IMPROVEMENTS OVER ARKANSAS RIVER**

**PLAN AND PROFILE**

SHEET TITLE  
 472-84883  
 PROJECT NUMBER

JRA  
 DESIGN BY  
 DPG  
 DRAWN BY  
 KJS  
 CHECKED BY

ISSUED  
 1/24/2011  
 REVISED

SHEET NO.  
 4 of 169