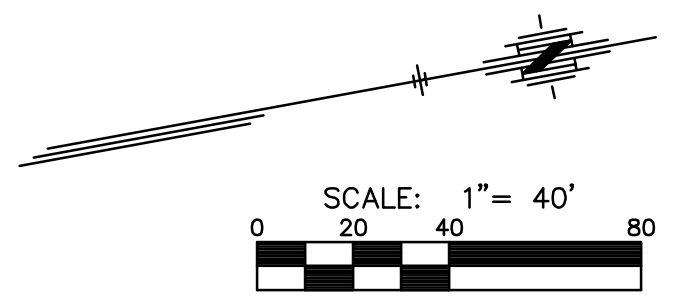
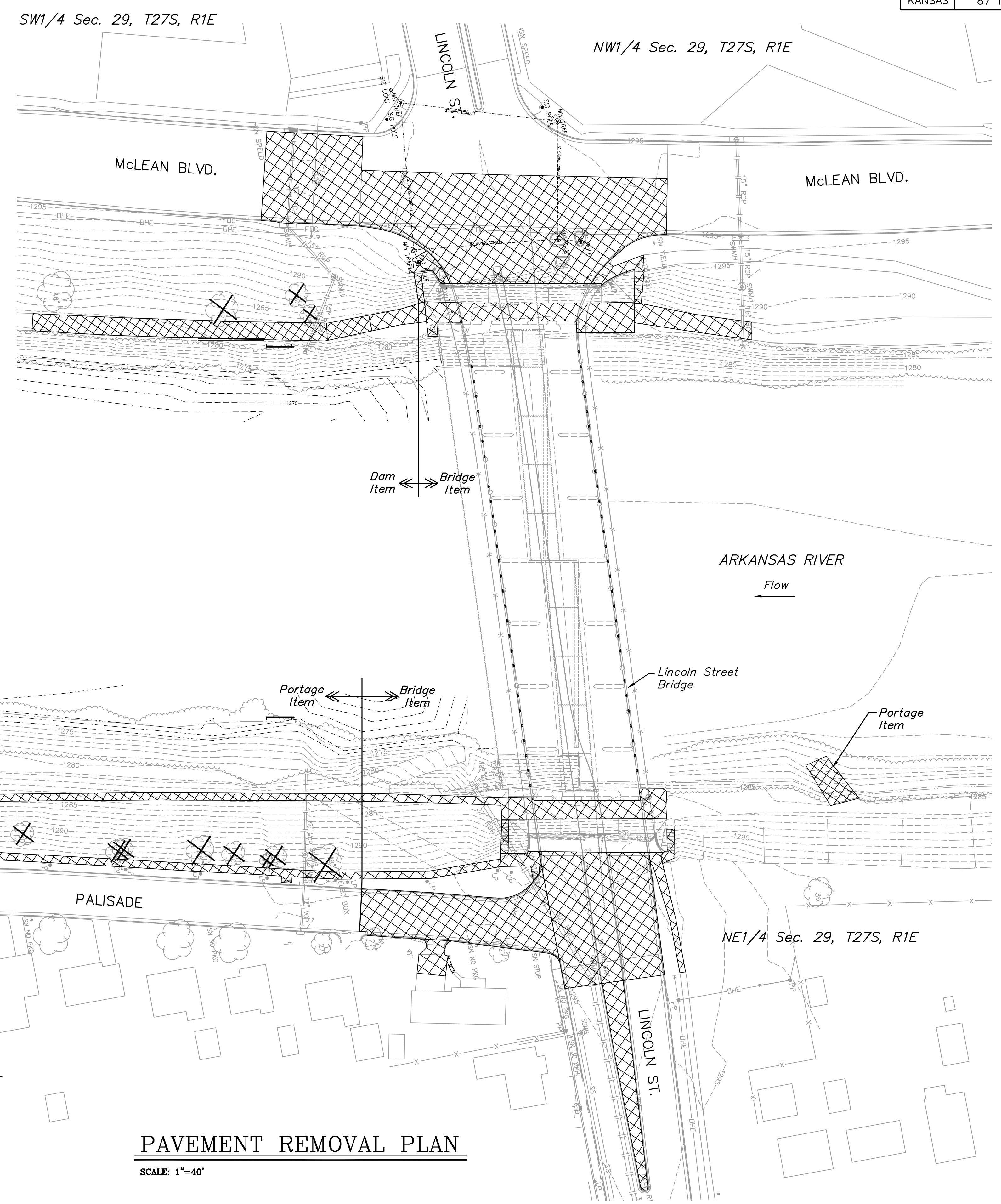


STATE	PROJECT NO.	YEAR	SHEET NO.	TOTAL SHEETS
KANSAS	87 N-0361-01	2011	6	169

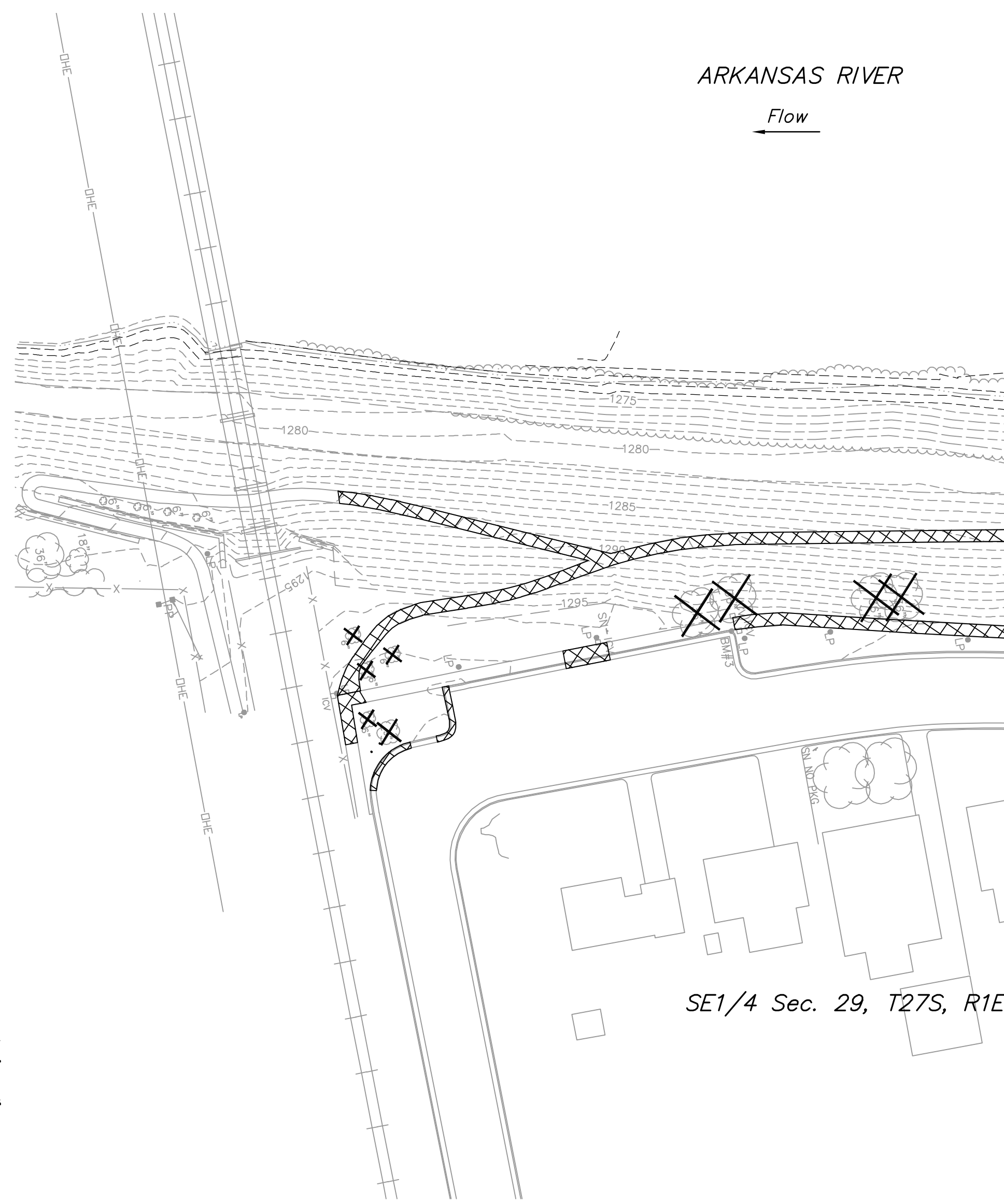
MKEC
ENGINEERING
CONSULTANTS, INC.
411 N. WEBB ROAD
WICHITA, KS. 67206
316-684-9600

SUMMARY OF QUANTITIES			
PROJECT	PAVEMENT REMOVAL (SQ.YD.)	SIDEWALK/PARKING LOT REMOVAL (SQ.FT.)	DESCRIPTION
Dam	-	2,596.8	West bank bike path
Dam Total =	-	2,596.8	
Portage	-	5,195.6	East bank sidewalk
Portage	-	541.6	Existing boat dock
Portage Total =	-	5,717.2	
Lincoln Bridge	-	4,124.5	West bank sidewalk steps
Lincoln Bridge	1,743.8	-	West side pavement & approach slab
Lincoln Bridge	-	3,338.1	East bank sidewalk steps
Lincoln Bridge	1,144.8	-	East side pavement & approach slab
Lincoln Bridge	-	1,342.2	Median surfacing
Lincoln Bridge	-	412.0	Palisade driveway & private walk
Lincoln Bridge Total =	2,888.6	9,236.8	



LEGEND
 Pavement Removal

NOTE:
 See sheet 116 for tree removal summary.
 Refer to the various Paving Plans for coordinates of the limits of removal.
 Existing Rip-Rap along River banks within the Project Limits shall be Removed from site. Material may be Re-used on site as Approved by the Engineer.



PAVEMENT REMOVAL PLAN
SCALE: 1"=40'

**LINCOLN STREET BRIDGE AND
DAM IMPROVEMENTS OVER
ARKANSAS RIVER**

PAVEMENT REMOVAL PLAN
SHEET TITLE
472-84883
PROJECT NUMBER

JRA
DESIGN BY
DPG
DRAWN BY
CHECKED BY

ISSUED
1/24/2011
REVISED

SHEET NO.
6 of 169

PLOTTED: Tuesday, January 25, 2011 8:58 AM

J:\CIVIL\07433\DWG\BRIDGE\PAV\07433_PAV_REMOVAL_PLANDWG