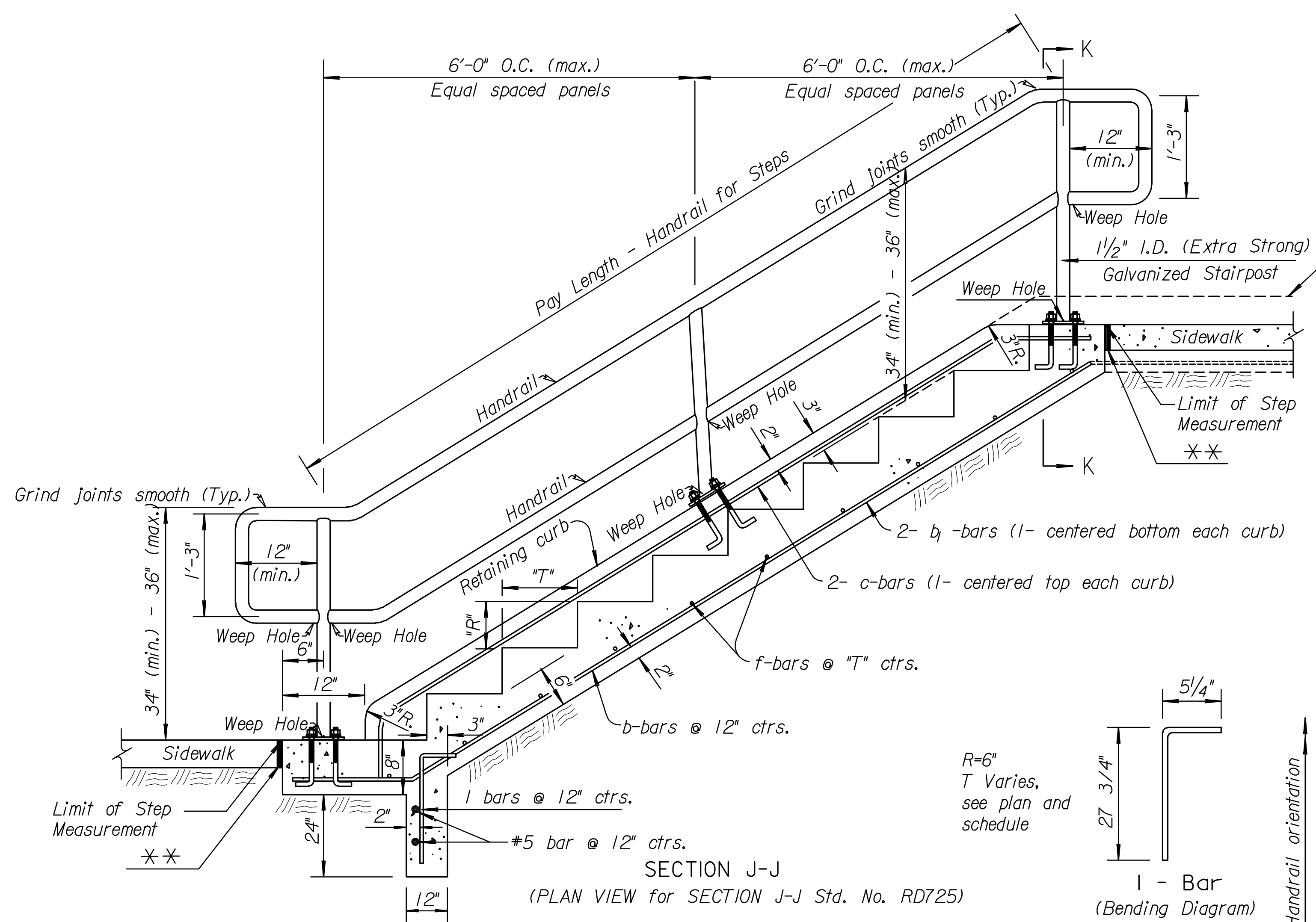


STATE	PROJECT NO.	YEAR	SHEET NO.	TOTAL SHEETS
KANSAS	87 N-0361-01	2011	25	169

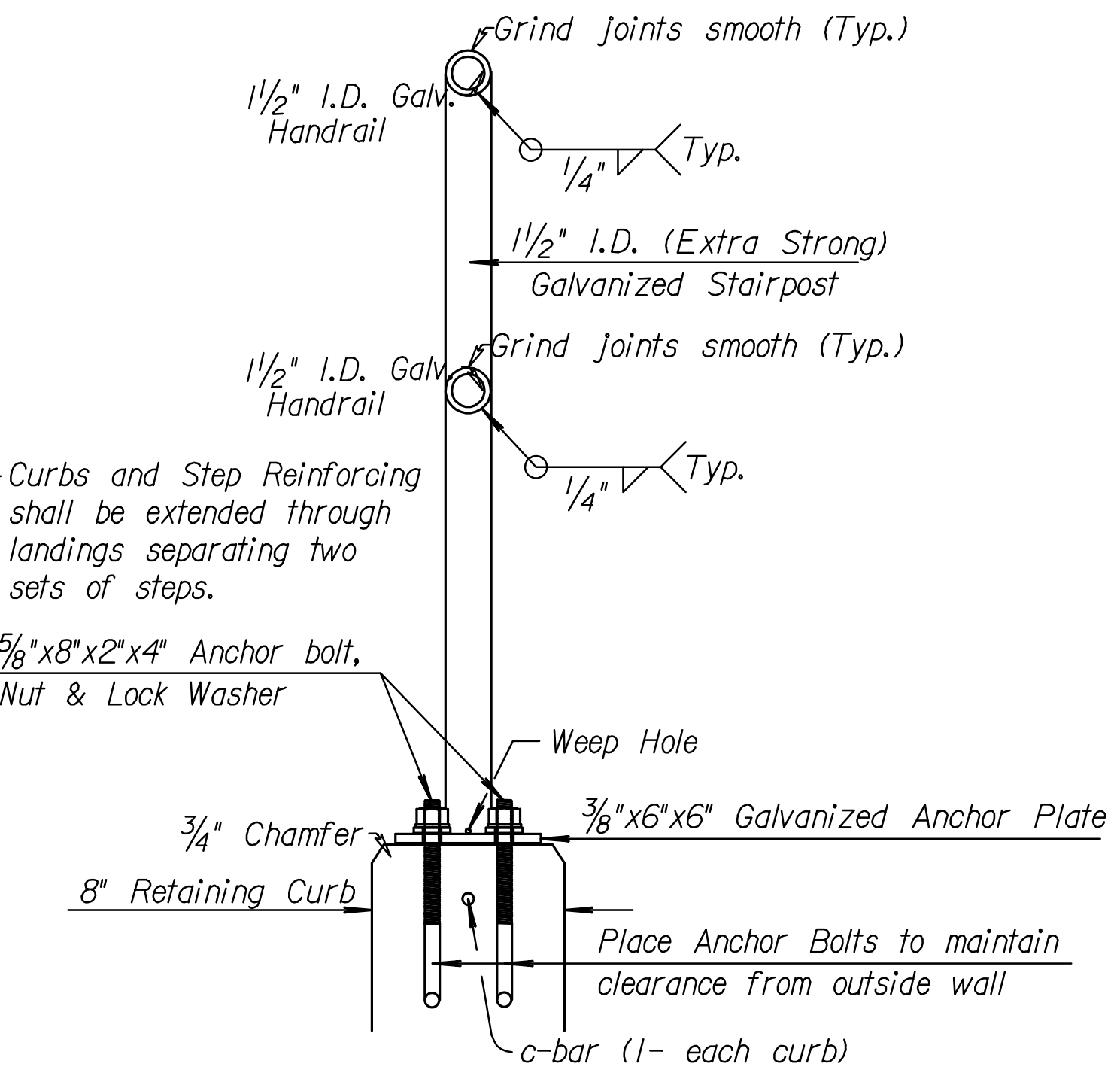
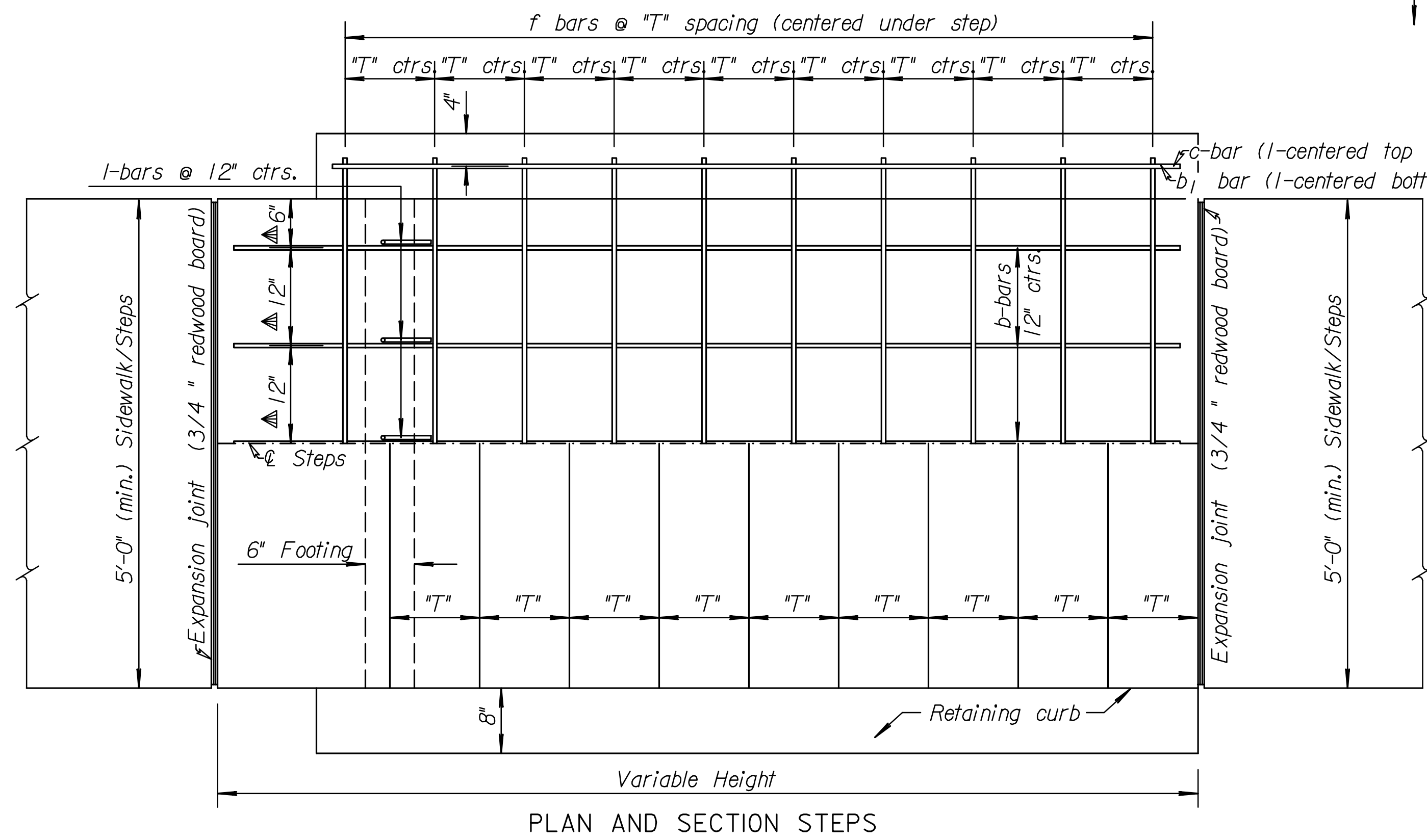
MKEC
ENGINEERING
CONSULTANTS, INC.
411 N. WEBB ROAD
WICHITA, K.S. 67206
316-684-9600

GENERAL NOTES

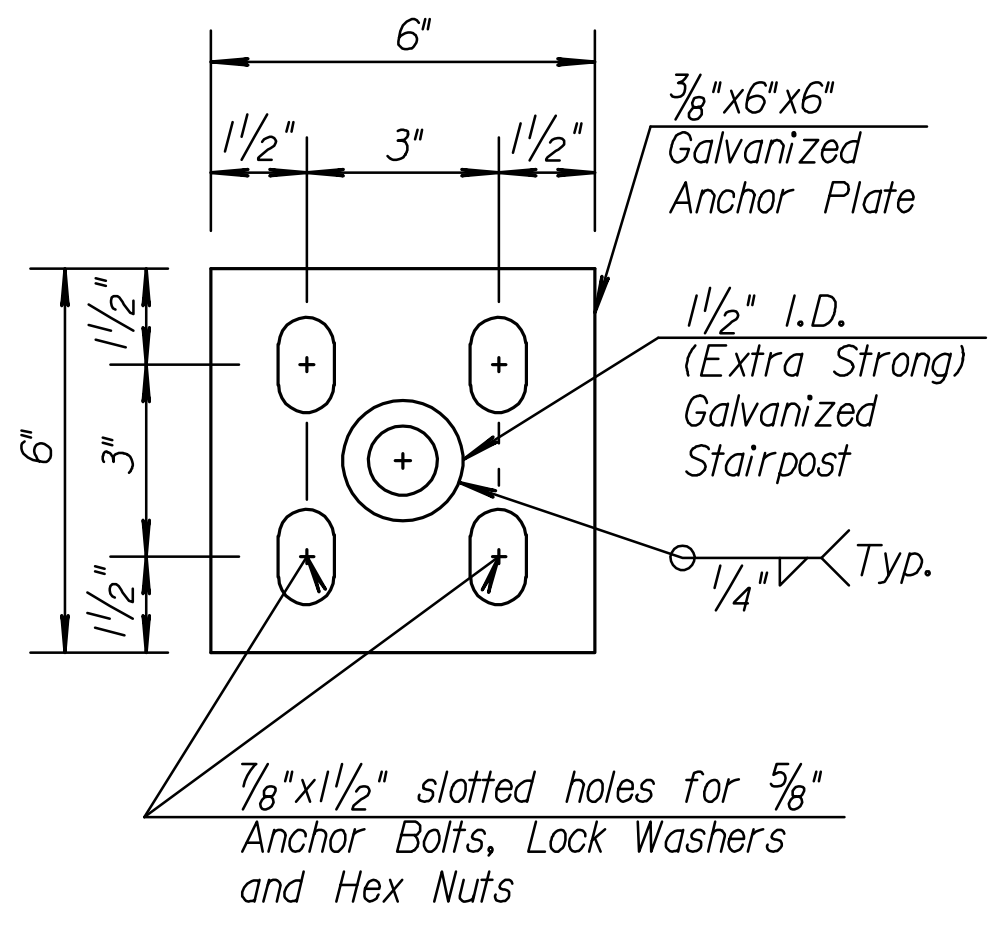
Use Grade 60 #4 bars for construction of steps with 2" clearance unless otherwise shown.
Fabricate handrail from 1/2" I.D. Galvanized Steel Pipe for Rail and 1/2" I.D. Galvanized Steel Pipe (Extra Strong) for Stairposts. Handrail consists of equal spaced panels not to exceed 6'-0" O.C. (max.). Use galvanized bolts and hardware for fabrication or installation of handrail. Ground smooth all welded connections and re-galvanize any areas where the spelter coating has been damaged. Field welding is not permitted.
Details shown are typical. Shop drawings for Design shown and Alternate designs need to be submitted to the Engineer for approval prior to handrail fabrication.
Required handrail materials, incidentals and labor are paid for under the bid item "Handrail". Payment for handrail is bid on a per linear foot basis measured from center of end stair post to center of end stair post. See Fencing and Railing Plan for further information.
All parts of the rails shall be painted in accordance with other railings on the project. Color to match other railings on the project.
Guardrails and Handrails shall be designed to withstand a 200 lb. concentrated load applied in any direction and at any point on the top rail.



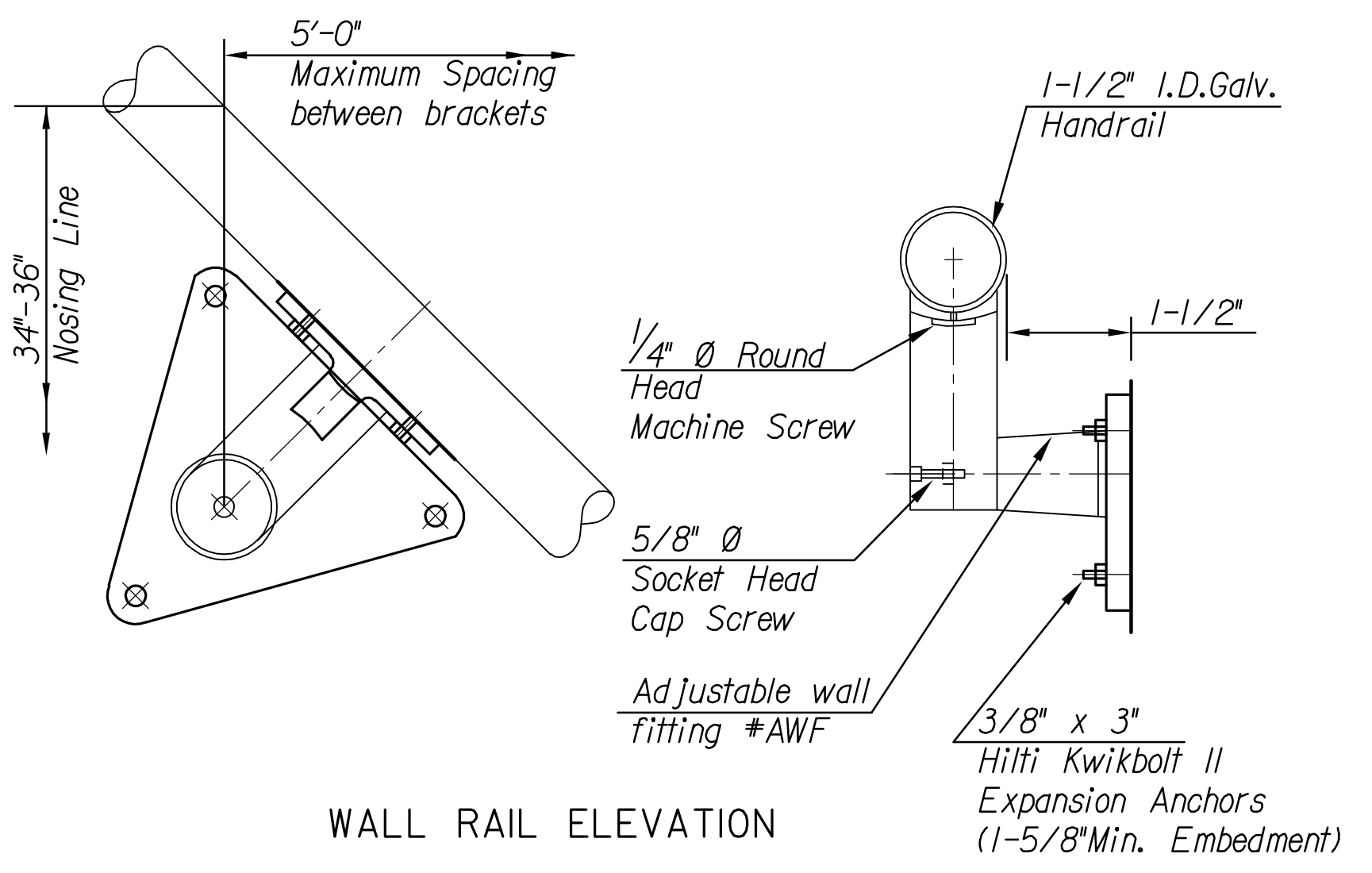
▲ #4 bars @ spacing shown are for 5'-0" wide steps (other widths must be figured).



SECTION K-K



PLAN- ANCHOR PLATE



WALL RAIL ELEVATION

STEP SCHEDULE						
LOCATION	AREA (S.Y.)	WIDTH	NO. STEPS	TREAD LENGTH	LANDING LENGTH	PROJECT
East Bank, West of Portage Path	29.3	12'-0"	6-6	18" *	5'-0" *	Portage
East Bank, East of Portage Path	42.4	12'-0"	8-8	18" *	5'-0" *	Portage
Lincoln Bridge East Abutment, South Side	44.9	12'-0"	6-6-7	15"	5'-0"	Bridge

* Measured along Outside Radius

LINCOLN STREET BRIDGE AND DAM IMPROVEMENTS OVER ARKANSAS RIVER

CONCRETE STEPS AND HANDRAIL
SHEET TITLE
472-84883
PROJECT NUMBER

JRA
DESIGN BY
DPG
DRAWN BY
CHECKED BY

ISSUED
1/24/2011
REVISED

SHEET NO.
25 of 169

PLOTTED: Tuesday, January 25, 2011 8:52AM

J:\CIVIL\07433\DWG\DA\DETAILS\07433 CONC-STEPS-HANDRAIL.DWG