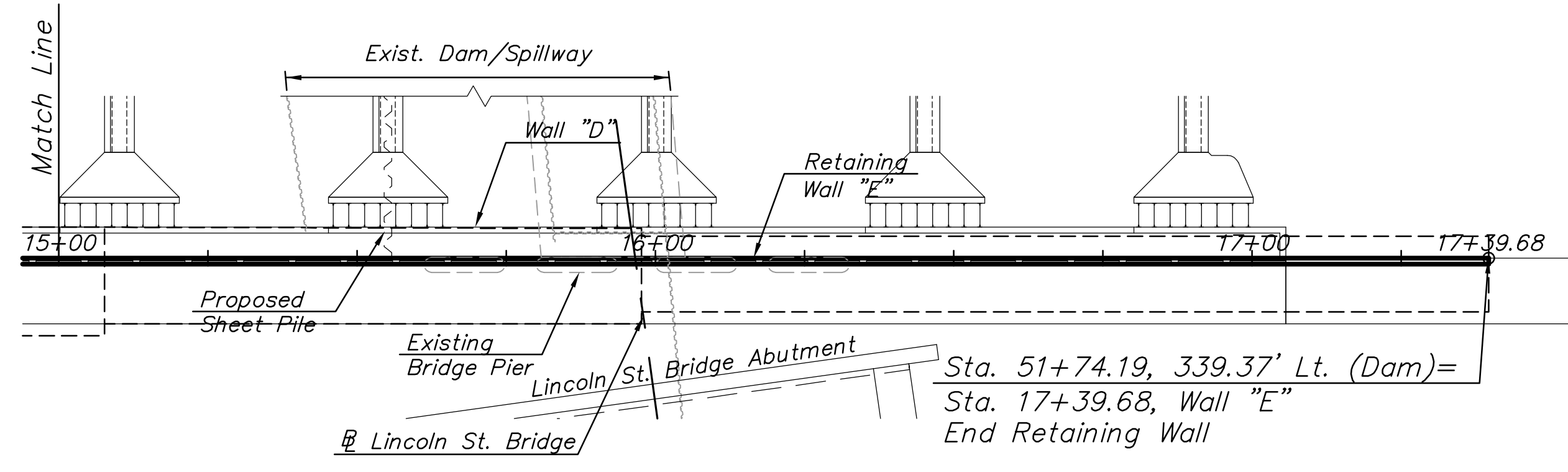


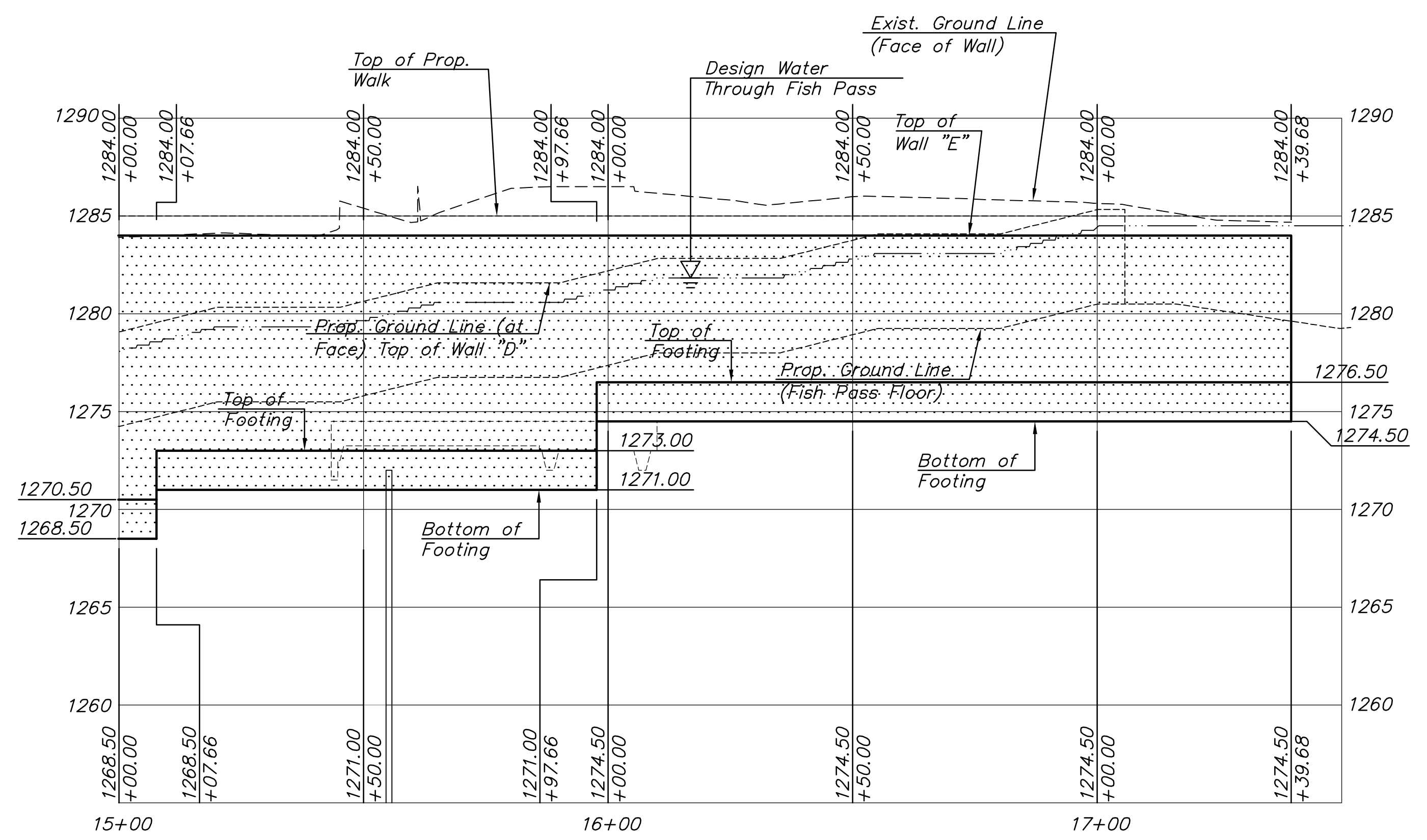
STATE	PROJECT NO.	YEAR	SHEET NO.	TOTAL SHEETS
KANSAS	87 N-0361-01	2011	40	169

MKEC
ENGINEERING
CONSULTANTS, INC.
411 N. WEBB ROAD
WICHITA, KS. 67206
316-684-9600

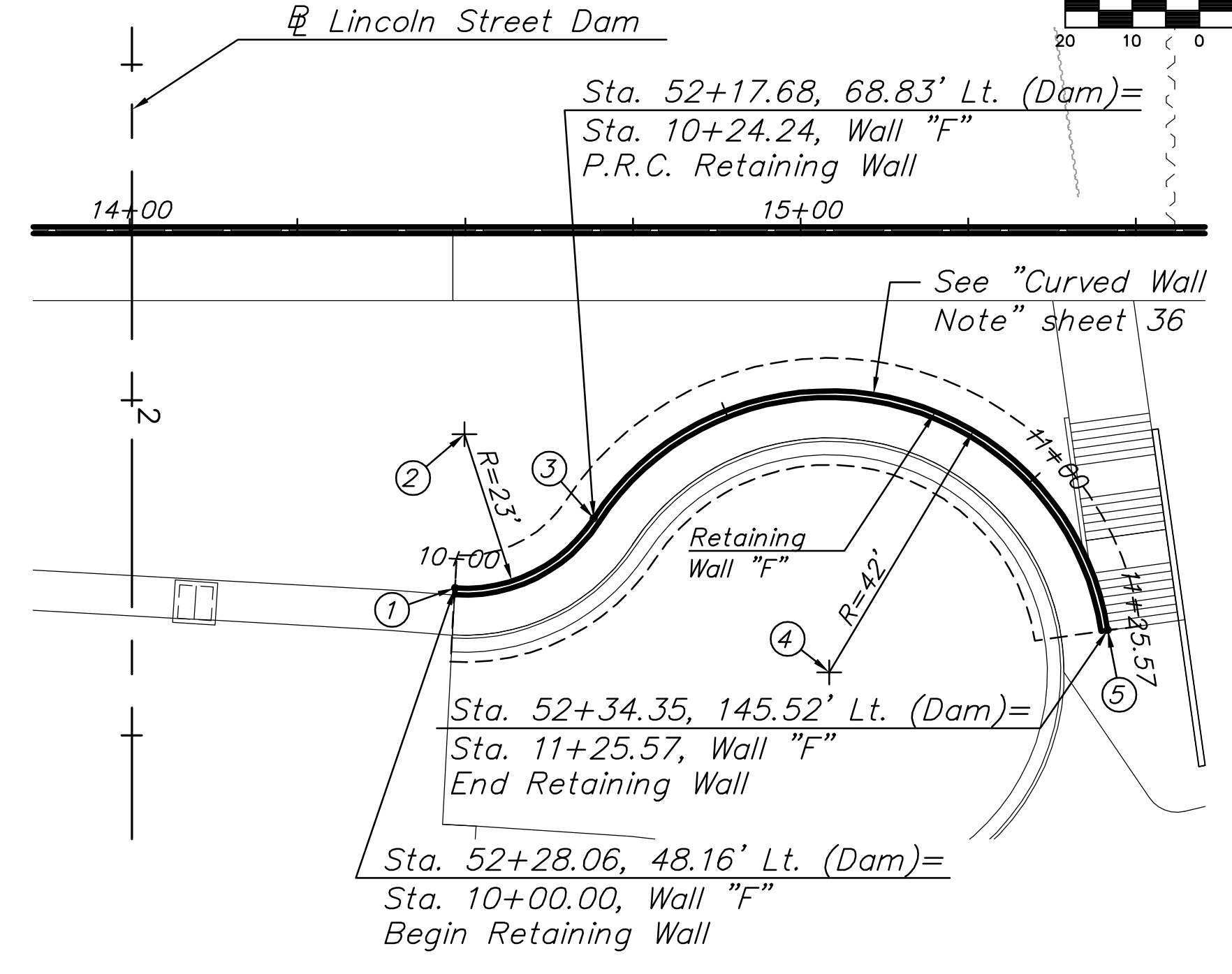
POINT NO.	STATION/OFFSET	NORTHING	EASTING	REMARKS
1	10+00.00 / 0.00' Rt.	1680399.7523	1647376.4518	PC
2	10+24.24 / 23.00' Lt.	1680405.2867	1647354.1276	Radius Point
3	10+24.24 / 0.00' Rt.	1680421.9582	1647369.9725	PRC
4	10+24.24 / 42.00' Rt.	1680452.4018	1647398.9067	Radius Point
5	11+25.57 / 0.00' Rt.	1680494.3815	1647400.2131	PT



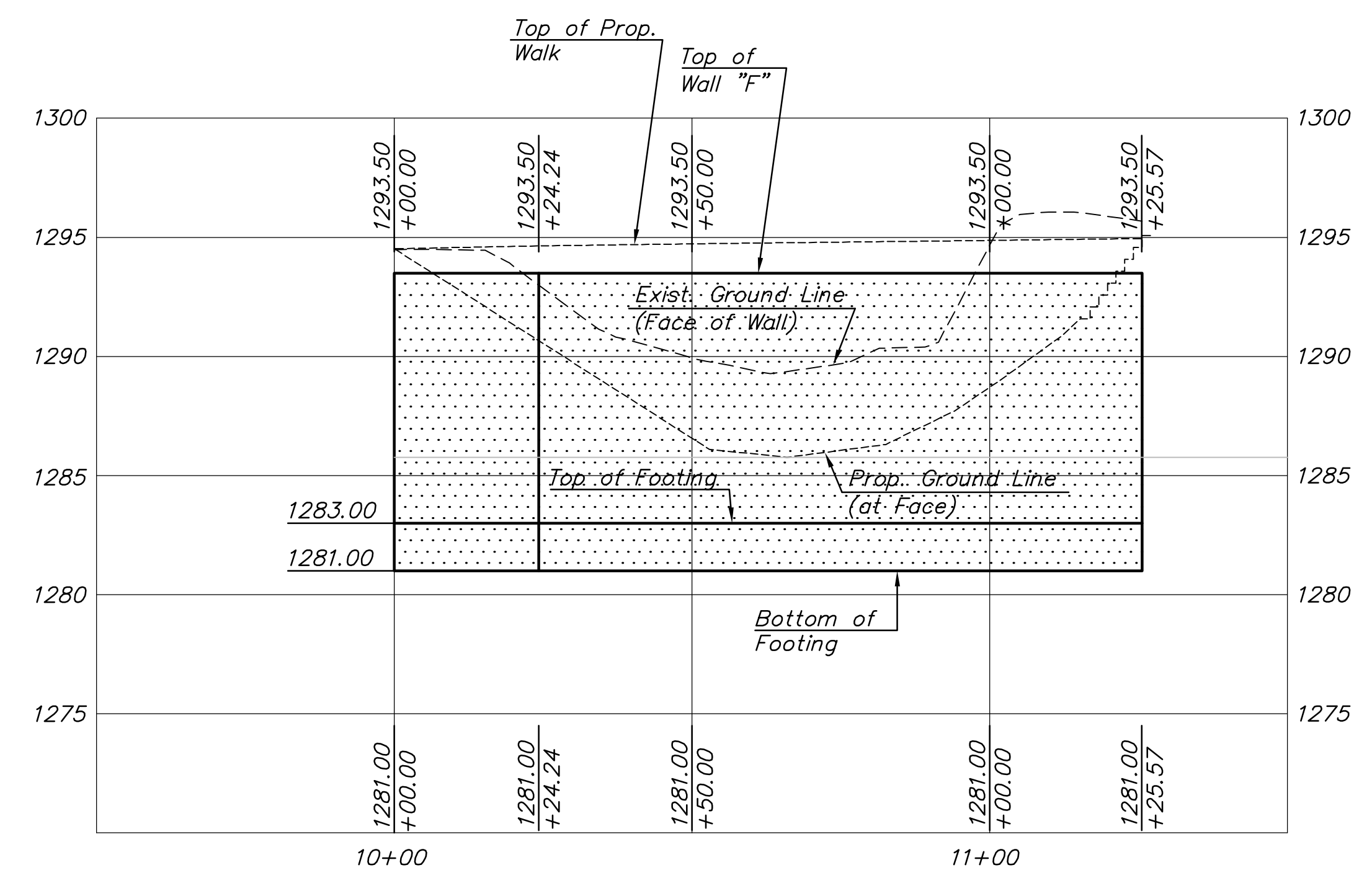
LAYOUT OF WALL "E"



PROFILE OF WALL "E"



LAYOUT OF WALL "F"



PROFILE OF WALL "F"

**LINCOLN STREET BRIDGE AND
DAM IMPROVEMENTS OVER
ARKANSAS RIVER**

**CAST-IN-PLACE
CONCRETE
RETAINING
WALL "E" & "F"**
SHEET TITLE
472-84883
PROJECT NUMBER

JRA
DESIGN BY
DPG
DRAWN BY
KJS
CHECKED BY

ISSUED
1/24/2011
REVISED

SHEET NO.
40 of 169

PLOTTED: Tuesday, January 25, 2011 8:58:00AM

J:\CIVIL\07433\DWG\BRIDGE\PAV\07433_MSE_RETAIN_WALL_E2.DWG