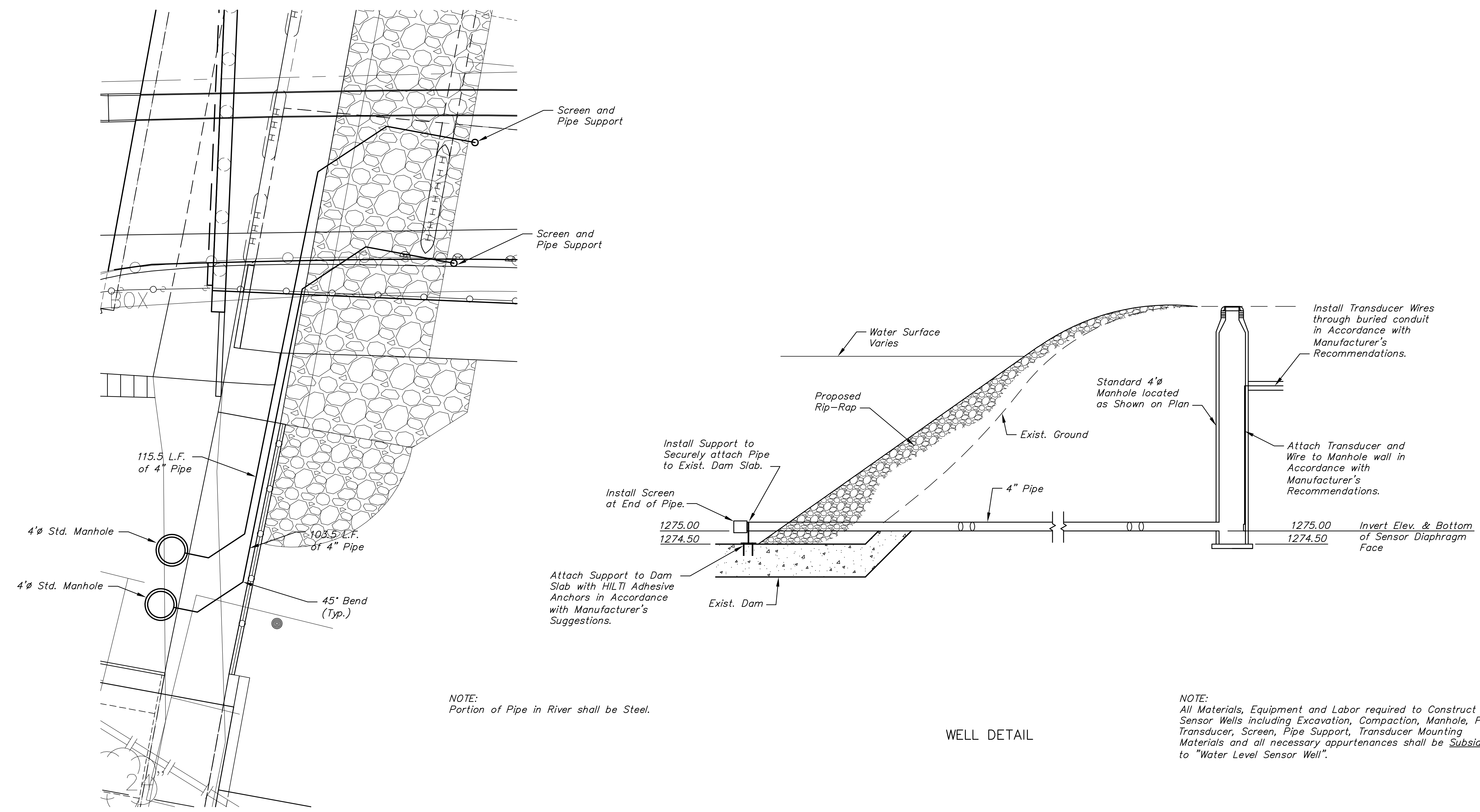


STATE	PROJECT NO.	YEAR	SHEET NO.	TOTAL SHEETS
KANSAS	87 N-0361-01	2011	92	169

MKEC
ENGINEERING
CONSULTANTS, INC.
411 N. WEBB ROAD
WICHITA, K.S. 67206
316-684-9600

**LINCOLN STREET BRIDGE AND
DAM IMPROVEMENTS OVER
ARKANSAS RIVER**



NOTE:
Portion of Pipe in River shall be Steel.

WELL DETAIL

NOTE:
All Materials, Equipment and Labor required to Construct Sensor Wells including Excavation, Compaction, Manhole, Pipe, Transducer, Screen, Pipe Support, Transducer Mounting Materials and all necessary appurtenances shall be *Subsidiary* to "Water Level Sensor Well".

WATER LEVEL SENSOR WELLS

**PROPOSED
MONITORING
WELLS**
SHEET TITLE
472-84883
PROJECT NUMBER

DMU
DESIGN BY
PJD
DRAWN BY
CHECKED BY

ISSUED
1/24/2011
REVISED

SHEET NO.
92 of 169

PLOTTED: Tuesday, January 25, 2011 8:56 AM

J:\CIVIL\07433\DWG\DA\PLANS\07433 MON WELLS.DWG