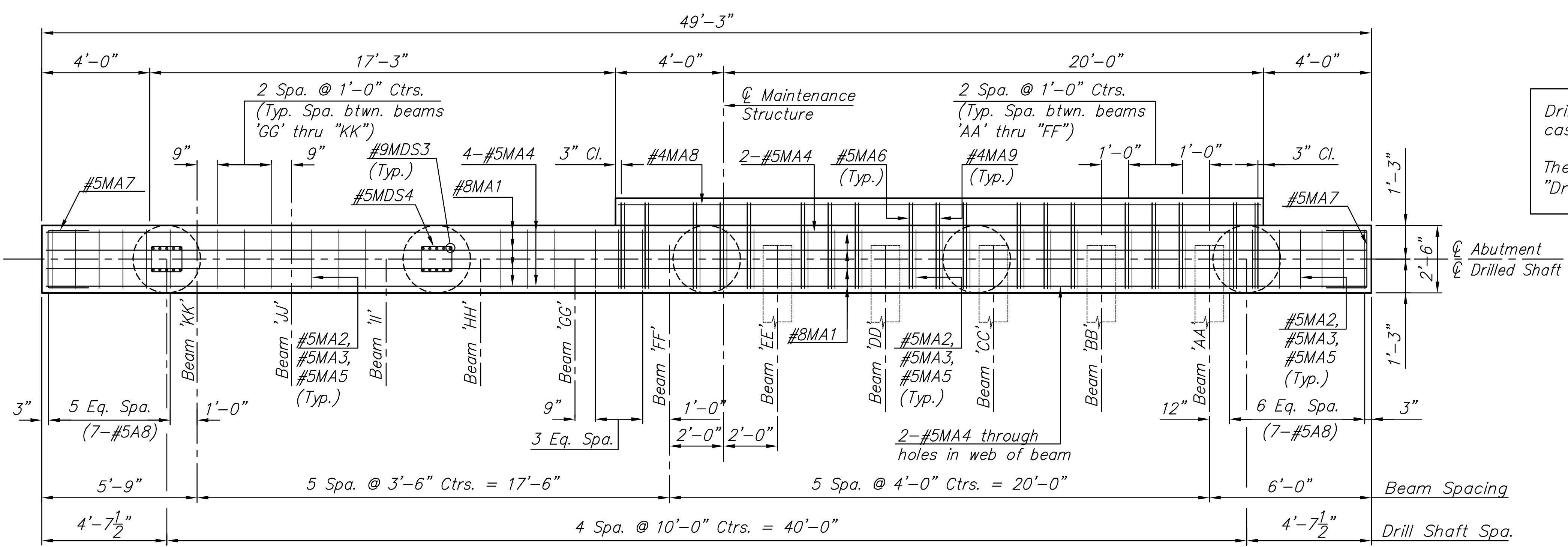


STATE	PROJECT NO.	YEAR	SHEET NO.	TOTAL SHEETS
KANSAS	87 N-0361-01	2011	95	169

MKEC
ENGINEERING
CONSULTANTS, INC.
411 N. WEBB ROAD
WICHITA, KS. 67206
316-684-9600

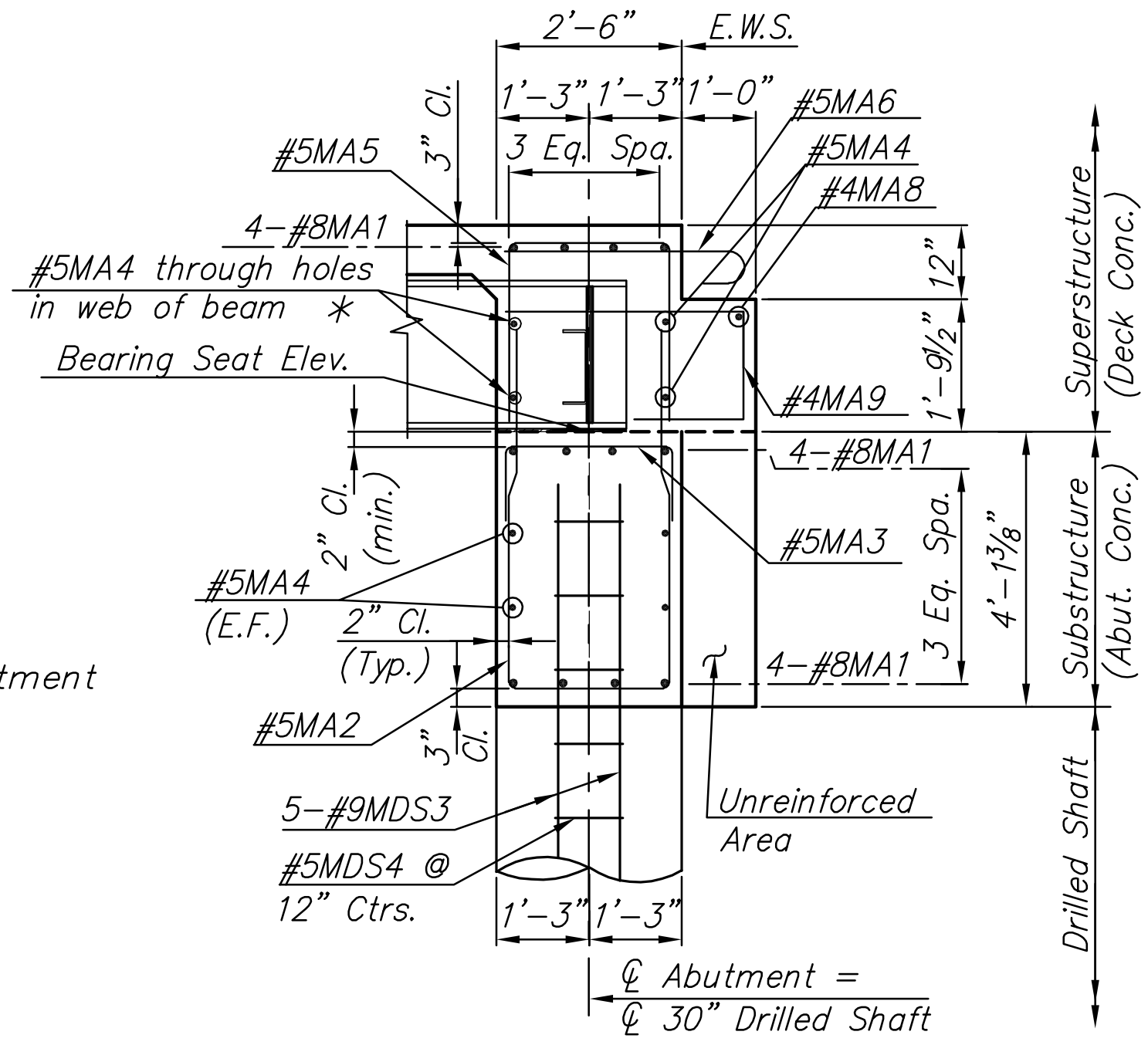
Drilled Shaft at Abut. No. 1 shall be constructed by the cased Method. A permanent casing shall be required.
The permanent casing is subsidiary to the bid item "Drilled Shafts (30)".



PLAN ABUTMENT DIAPHRAGM

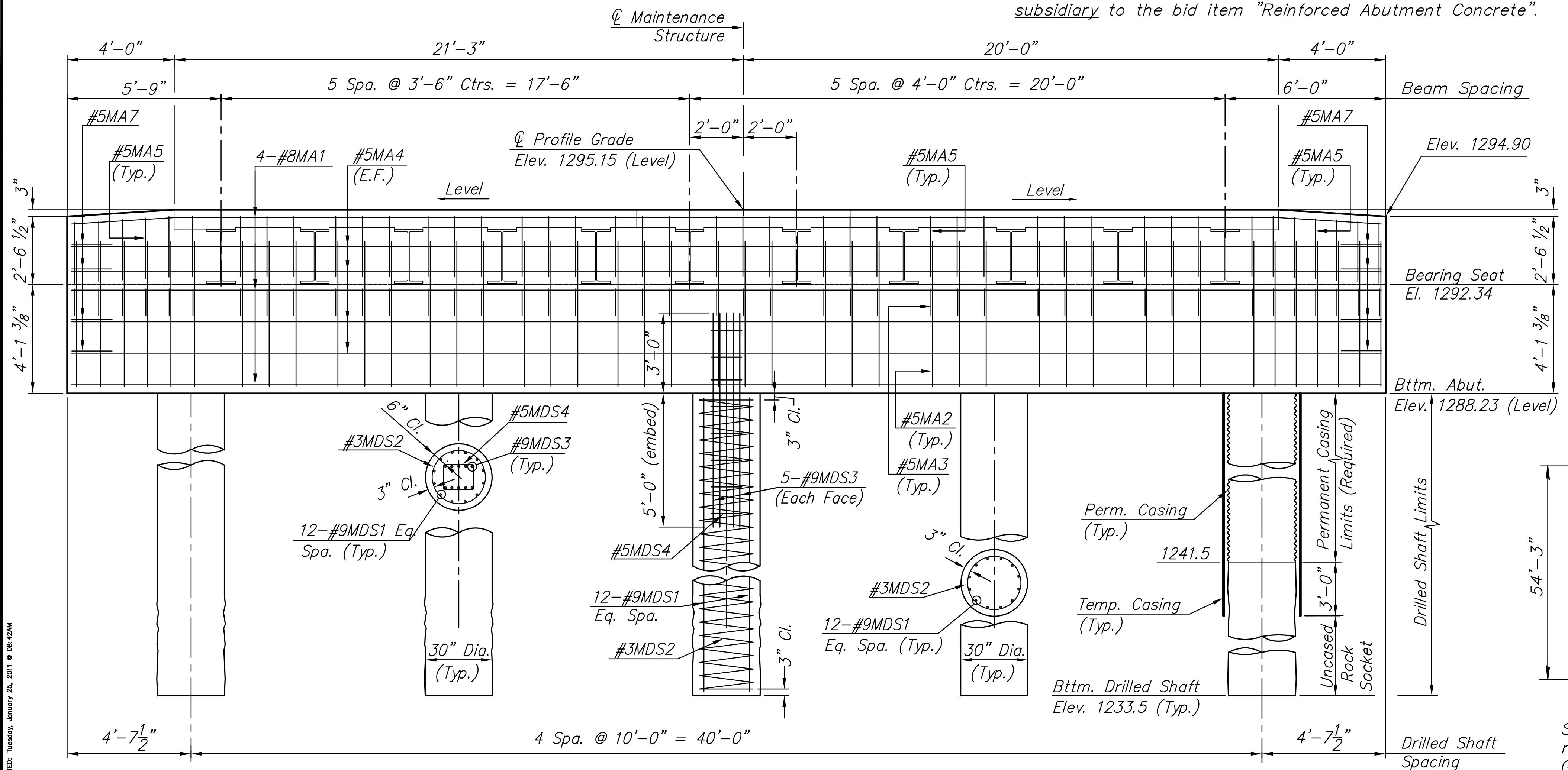
The amount of reinforced concrete required to construct the abutment diaphragm has not been included in the summary of quantities.

The additional reinforced concrete required shall be considered subsidiary to the bid item "Reinforced Abutment Concrete".

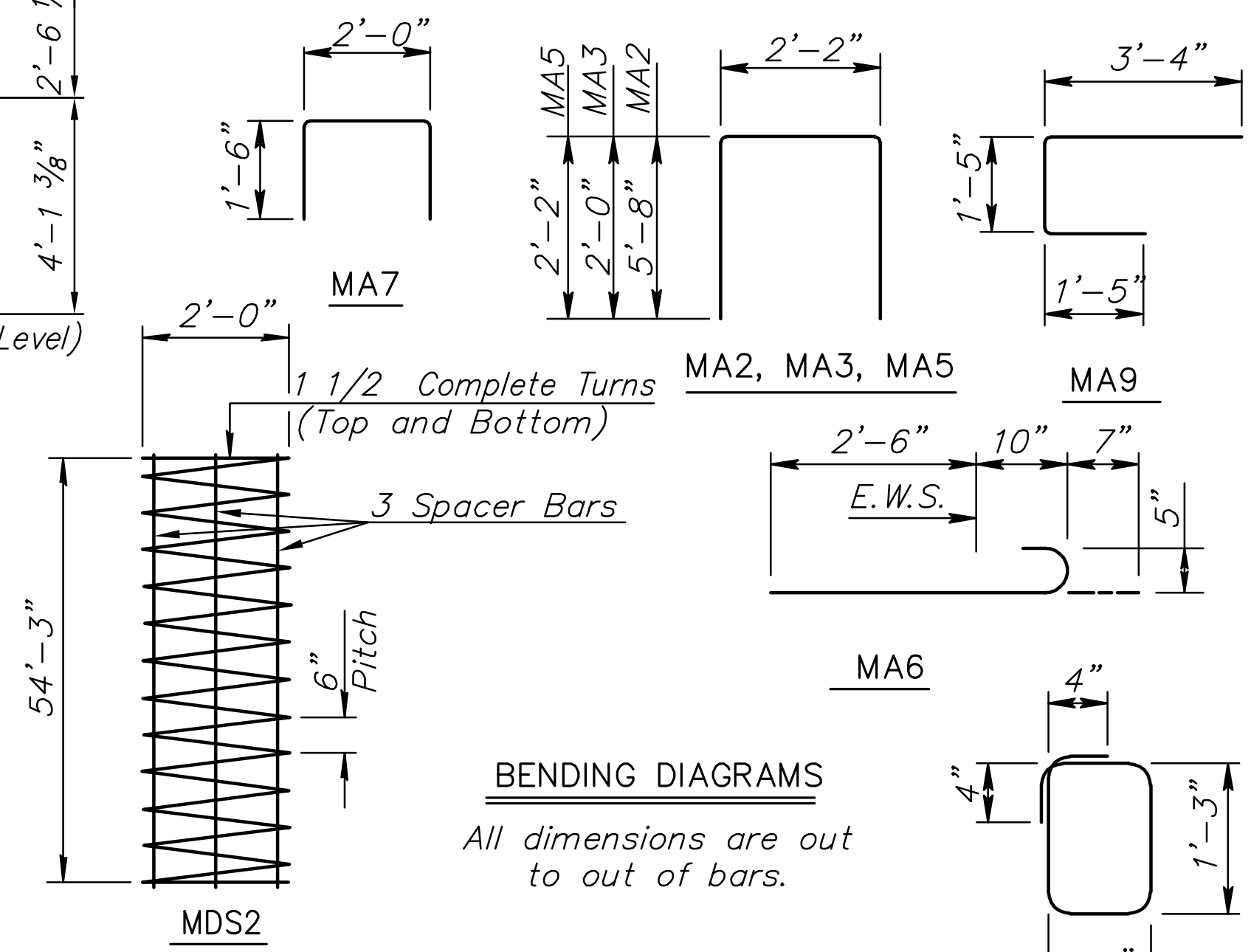


TYPICAL SECTION

* Reinforcing bar #5MA4 to pass through holes in web of beam. Place black mastic or expansion joint material around bars through beams to prevent concrete intrusion. (See Girder Detail Sheet for hole locations.)



ELEVATION



BENDING DIAGRAMS

All dimensions are out to out of bars.

Spiral reinforcing shall meet the requirements of either ASTM A615 Gr.60 or 40, or A82.

**LINCOLN STREET BRIDGE AND
DAM IMPROVEMENTS OVER
ARKANSAS RIVER**

**MAINTENANCE
STRUCTURE
ABUTMENT
DETAILS**
SHEET TITLE
472-84883
PROJECT NUMBER

DESIGN BY: JAG
DRAWN BY: PJD
CHECKED BY: KJS

ISSUED: 1/24/2011
REVISED:

SHEET NO.
95 of 169

PLOTED: Tuesday, January 25, 2011 8:42 AM

J:\CIVIL\07433\DWG\DA\PLANS\07433_MAINT_BR_ABUT.DWG