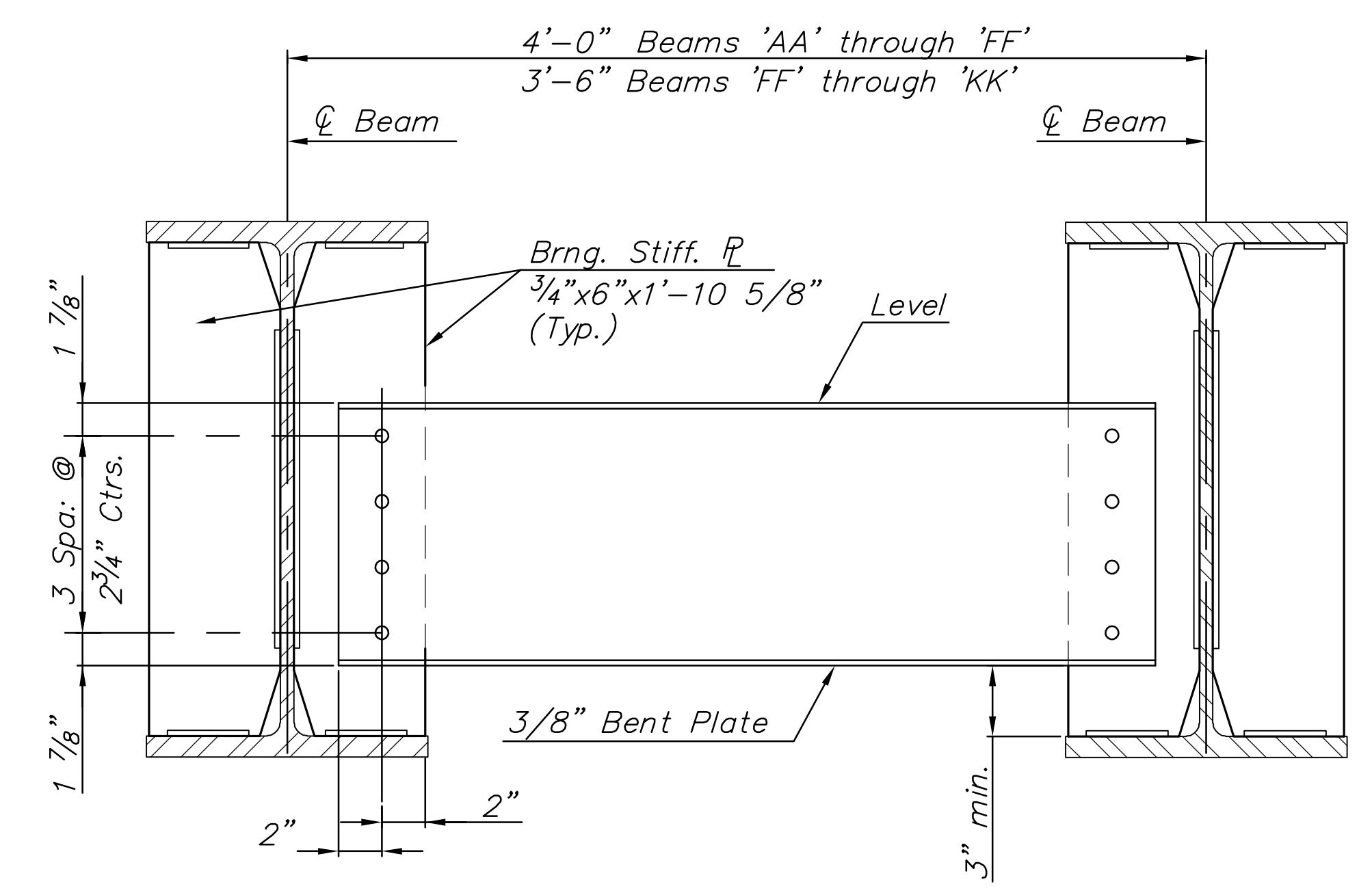
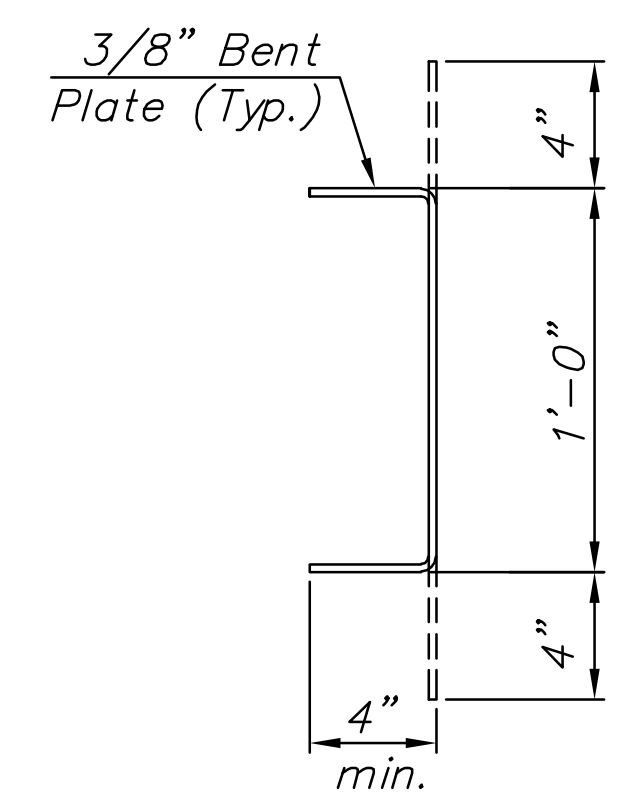


STATE	PROJECT NO.	YEAR	SHEET NO.	TOTAL SHEETS
KANSAS	87 N-0361-01	2011	100	169

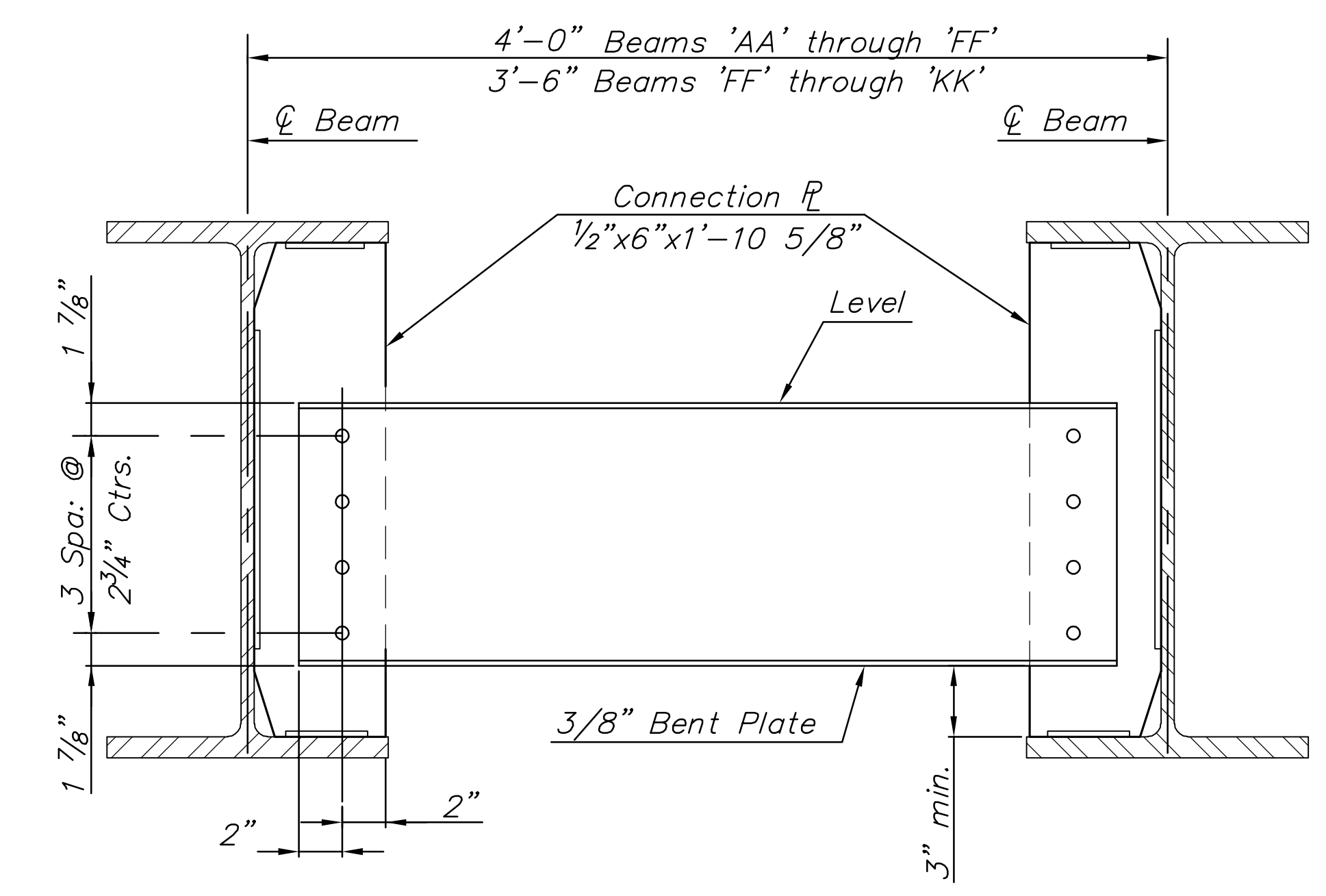
MKEC
ENGINEERING
CONSULTANTS, INC.
411 N. WEBB ROAD
WICHITA, K.S. 67206
316-684-9600



END DIAPHRAGM CONNECTION
(8 - 7/8" Dia. H.S. bolts per diaphragm)



TYPICAL BENT
PLATE DETAIL



INTERMEDIATE DIAPHRAGM CONNECTION
(8 - 7/8" Dia. H.S. bolts per diaphragm)

TYPICAL BENT PLATE DIAPHRAGM DETAILS
AND CONNECTIONS

NOTES:

- All bearing stiffener and diaphragm connection plates shall conform to AASHTO M270 Grade 50W. All other diaphragm structural steel shall conform to ASTM A709 Gr. 50W.
- Provide 7/8"Ø bolts with a 15/16"Ø bolt hole for all diaphragm connections. All bolts, nuts and washers for diaphragm connections shall conform to the heavy hex structural requirements of ASTM A325 Type 3, unless otherwise noted.
- For spacing of Intermediate Diaphragm Connection Plates, see Sheet No. 97.
- Connection Plates and Bearing Stiffener Plates shall be placed vertical and perpendicular to the girder web unless noted otherwise.

LINCOLN STREET BRIDGE AND
DAM IMPROVEMENTS OVER
ARKANSAS RIVER

MAINTENANCE
STRUCTURE
DIAPHRAGM
DETAILS

SHEET TITLE
472-84883
PROJECT NUMBER

DESIGN BY JAG
DRAWN BY PJD
CHECKED BY KJS

ISSUED
1/24/2011
REVISED

SHEET NO.
100 of 169