

STATE	PROJECT NO.	YEAR	SHEET NO.	TOTAL SHEETS
KANSAS	87 N-0361-01	2011	103	169

MKEC
ENGINEERING
CONSULTANTS, INC.
411 N. WEBB ROAD
WICHITA, K.S. 67206
316-684-9600

**LINCOLN STREET BRIDGE AND
DAM IMPROVEMENTS OVER
ARKANSAS RIVER**

**CONTROL
BUILDING
PLAN AND
DETAILS**
SHEET TITLE
472-84883
PROJECT NUMBER

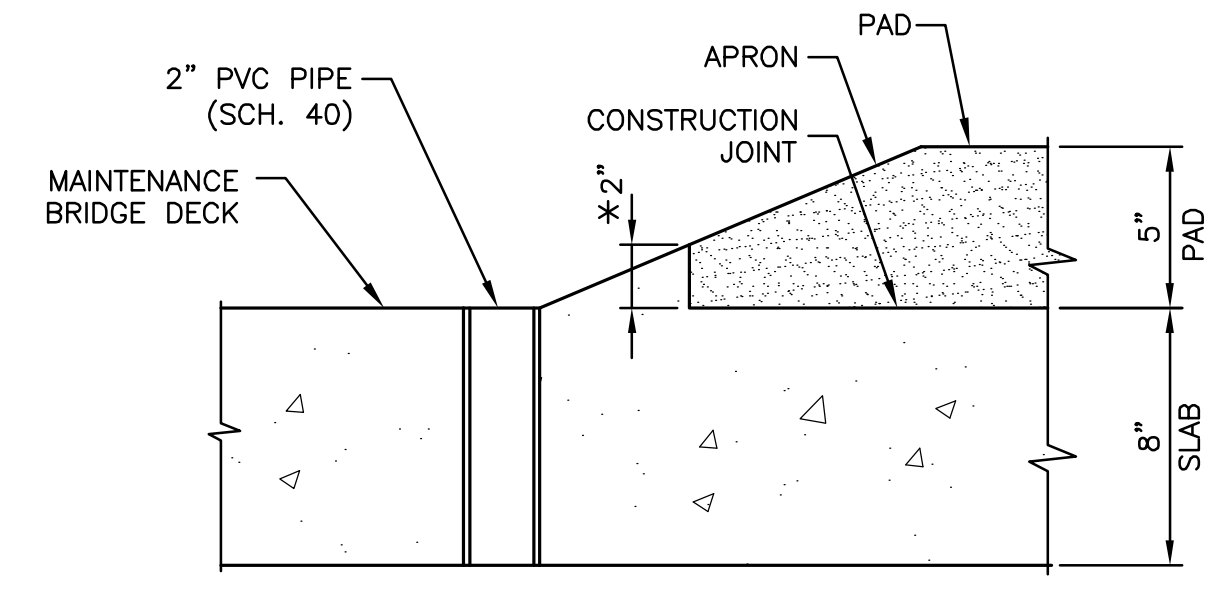
JAG
DESIGN BY
DMU
DRAWN BY
KJS
CHECKED BY

ISSUED
1/24/2011
REVISED

SHEET NO.
103 of 169

STRUCTURAL GENERAL NOTES:

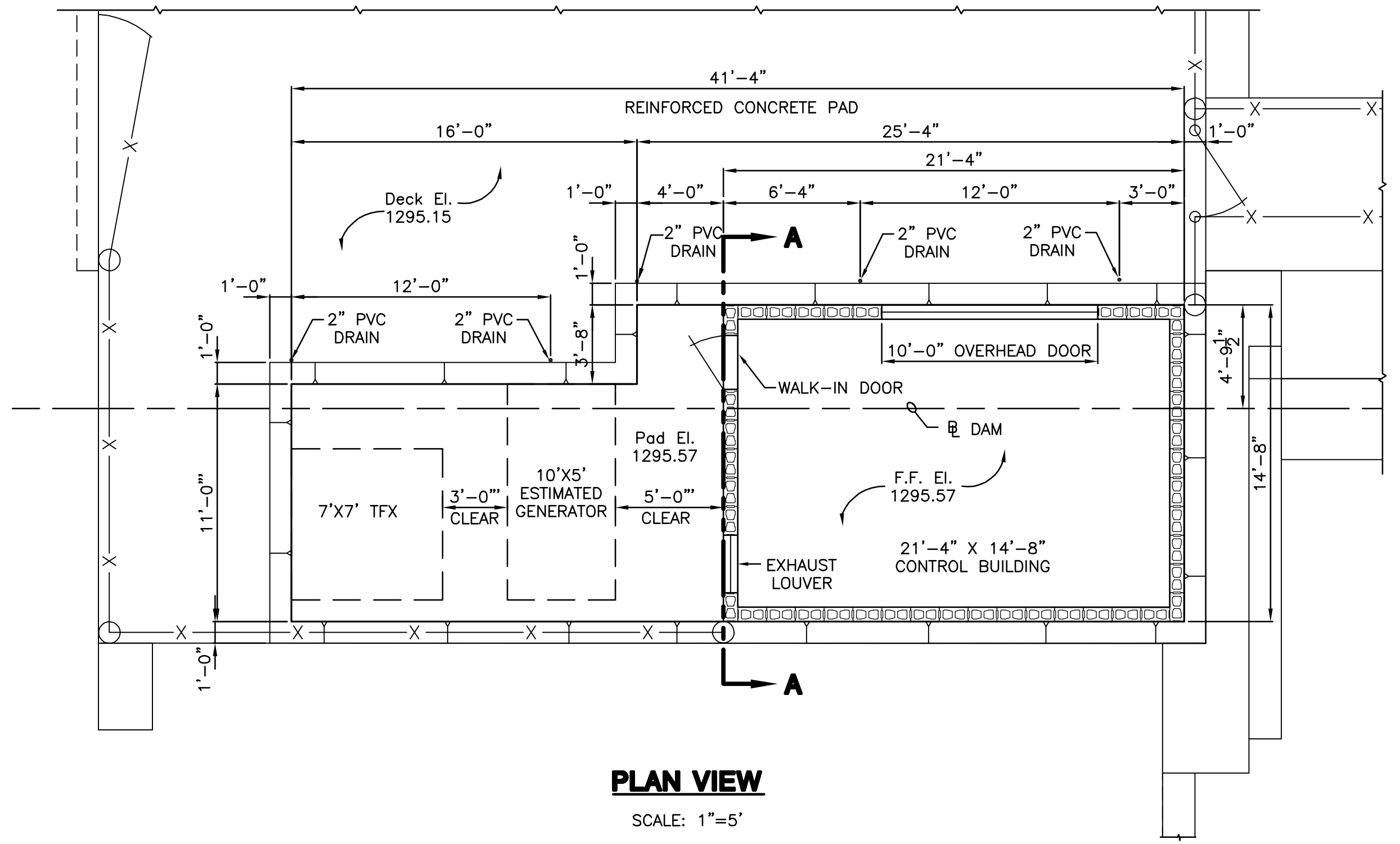
- MASONRY UNITS SHALL BE LIGHTWEIGHT, SPLIT FACE CONCRETE BLOCK CONFORMING TO ASTM DESIGNATION C90, GRADE N-1. (Fm' = 1,800 psi)
- MORTAL SHALL CONSIST OF PORTLAND CEMENT, HYDRATED LIME, SAND AND WATER, CONFORMING TO ASTM C270, TYPE S.
- CHAMFER ALL EXPOSED CONCRETE EDGES 3/4" (VERIFY WITH THE ARCHITECT/OWNERS REPRESENTATIVE).
- ALL MASONRY SHALL BE REINFORCED VERTICALLY, FULL HEIGHT, AS NOTED ON THE DRAWINGS. VERTICAL REINFORCING SHALL CONFORM TO ASTM A615 GRADE 60.
- GROUT ALL REINFORCED CELLS AND CELLS AS NOTED FULL HEIGHT IN ACCORDANCE WITH THE 2000 INTERNATIONAL BUILDING CODE.
- GROUT LIFTS TO NOT EXCEED 4 FEET IN HEIGHT.
- MASONRY BEARING WALLS SHALL BE IN PLACE AT LEAST 48 HOURS BEFORE ROOF LOADS ARE APPLIED.
- ALL STRUCTURAL REGULAR WEIGHT CAST-IN-PLACE CONCRETE SHALL HAVE A MINIMUM COMPRESSIVE STRENGTH OF 4000 PSI AT 28 DAYS (TYPICAL UNLESS NOTED). ALL CONCRETE SHALL BE IN CONFORMANCE WITH THE LATEST A.C.I. 301 STANDARDS PUBLICATION.
- ALL REINFORCING BARS SHALL MEET ASTM A615 GRADE 60.
- HORIZONTAL REINFORCING SHALL BE STANDARD LADDER-TYPE @ 16" O.C. HORIZ. CONFORMING TO ASTM DESIGNATION A82 WITH NO. 9 GAUGE DEFORMED SIDE RODS. LAP 1'-0" MIN. AT SPLICES. SPACE AT 16" O.C. VERTICALLY. PROVIDE PREFABRICATED CORNER.
- PROVIDE CORNER BARS FOR ALL BOND BEAM REINFORCING.
- CONCRETE PROTECTION FOR REINFORCEMENT SHALL BE 3/4" CLEAR FOR SLABS, 2" CLEAR FOR FORMED SURFACES AND 3" CLEAR FOOTINGS (TYPICAL UNLESS NOTED).
- REINFORCEMENT SHALL BE CONTINUOUS AND LAPPED 40 BAR DIAMETERS (2' -6" MIN.) EXCEPT AS NOTED AND PROVIDE CORNER BARS OF SAME SIZE AND SPACING.
- REINFORCEMENT SHALL BE DETAILED IN ACCORDANCE WITH THE LATEST A.C.I. DETAILING MANUAL BY A QUALIFIED AND EXPERIENCED FIRM AND PERSON. PLACE AND SUPPORT REINFORCEMENT WITH ACCESSORIES: MAXIMUM SPACING - 48" CENTERS (PLASTIC TIPPED LEGS FOR EXPOSED SURFACES). USE 3" SBP (SLAB BOLSTERS PLATED) SUPPORTS AT ALL FOOTINGS.
- CONTRACTOR SHALL VERIFY THAT ALL REINFORCEMENT, INSERTS, SLEEVES AND EMBEDDED ITEMS ARE PROPERLY LOCATED AND RIGIDLY SECURED PRIOR TO CONCRETE PLACEMENT - "WET STICKING" EMBED ITEMS WILL NOT BE ALLOWED.
- ALL ANCHORS WHERE NOTED SHALL BE MANUFACTURED BY HILTI, INC. AND INSTALLED PER HILTI SPECIFICATIONS. SUBSTITUTIONS SHALL BE SUBMITTED FOR REVIEW AND APPROVAL WITH APPROPRIATE ICBO EVALUATION REPORTS.
- HOLES, PIPES, SLEEVES, ETC. NOT SHOWN ON THE DRAWINGS MUST BE REVIEWED BY THE ARCHITECT/OWNERS REPRESENTATIVE BEFORE PLACEMENT THROUGH STRUCTURAL MEMBERS.
- NO ALUMINUM SHALL BE EMBEDDED IN ANY CONCRETE.
- IF MECHANICAL AND ELECTRICAL EQUIPMENT SIZES, WEIGHTS, OR LOCATIONS DO NOT COINCIDE WITH EQUIPMENT SHOWN ON THE PLANS, COORDINATE ADJUSTMENTS WITH THE ARCHITECT/OWNERS REPRESENTATIVE.
- NO AREA OF THE STRUCTURE SHALL BE LOADED WITH CONSTRUCTION MATERIALS OR EQUIPMENT THAT EXCEEDS FINAL DESIGN CRITERIA.
- THE STRUCTURE IS DESIGNED TO BE SELF-SUPPORTING AND STABLE AFTER THE BUILDING IS FULLY COMPLETED. IT IS SOLELY THE CONTRACTORS RESPONSIBILITY TO EXECUTE AND DETERMINE FINAL ERECTION PROCEDURES, SEQUENCING AND TO INSURE THE SAFETY OF THE BUILDING AND ITS COMPONENT PARTS DURING ERECTION. THIS INCLUDES WHATEVER SHORING, SHEETING, TEMPORARY BRACING, GUYING OR TIE DOWNS WHICH MIGHT BE NECESSARY.
- FABRICATORS AND SUPPLIERS SHALL CLEARLY NOTE CHANGES MADE IN SHOP DRAWINGS WHICH DIFFER FROM CONSTRUCTION DOCUMENTS.
- THE STRUCTURE IS NOT DESIGNED FOR FUTURE EXPANSION.
- IF DISCREPANCIES EXIST BETWEEN STRUCTURAL PLANS, ARCHITECTURAL PLANS, OTHER PLANS, OR SPECIFICATIONS, THE CONTRACTOR OR SUB-CONTRACTOR SHALL PROVIDE A WRITTEN REQUEST FOR CLARIFICATION FROM THE ARCHITECT AND/OR ENGINEER BEFORE PROCEEDING WITH THE WORK.
- CONTRACTOR TO VERIFY ALL DIMENSIONS, ELEVATIONS AND EXISTING CONDITIONS AND REPORT ANY DISCREPANCIES TO THE ARCHITECT/OWNER'S REPRESENTATIVE IMMEDIATELY.
- ROLLING OVERHEAD DOOR (10'X8') SHALL BE STEEL (20 GA.), HOT DIPPED GALVANIZED WITH TWO COATS OF LIGHT GRAY EPOXY PAINT. DOOR IS UNINSULATED AND SHALL HAVE PROVISION TO LOCK FROM THE INTERIOR.
- HOLLOW METAL DOOR (7'X3') SHALL BE STEEL (12 GA.), 2" THICKNESS WITH STEEL FRAME (12 GA.). DOOR AND FRAME SHALL BE HOT DIPPED GALVANIZED. FINISH OF DOOR AND FRAME SHALL HAVE TWO COATS OF LIGHT GRAY EPOXY PAINT. THE LOCK SET SHALL BE SUPPLIED WITH THREE (3) KEYS. DOOR IS UNINSULATED.
- EXHAUST LOUVER (32"X24") SHALL BE STEEL, HOT DIPPED GALVANIZED WITH TWO COATS OF LIGHT GRAY EPOXY PAINT.
- 5" REINFORCED CONCRETE PAD FOR CONTROL BUILDING SHALL BE CONSIDERED SUBSIDIARY TO THE BID ITEM "CONTROL BUILDING".
- ALL MATERIALS AND SHOP DRAWINGS SHALL BE APPROVED BY THE ENGINEER PRIOR TO CONSTRUCTION.



DRAIN DETAIL

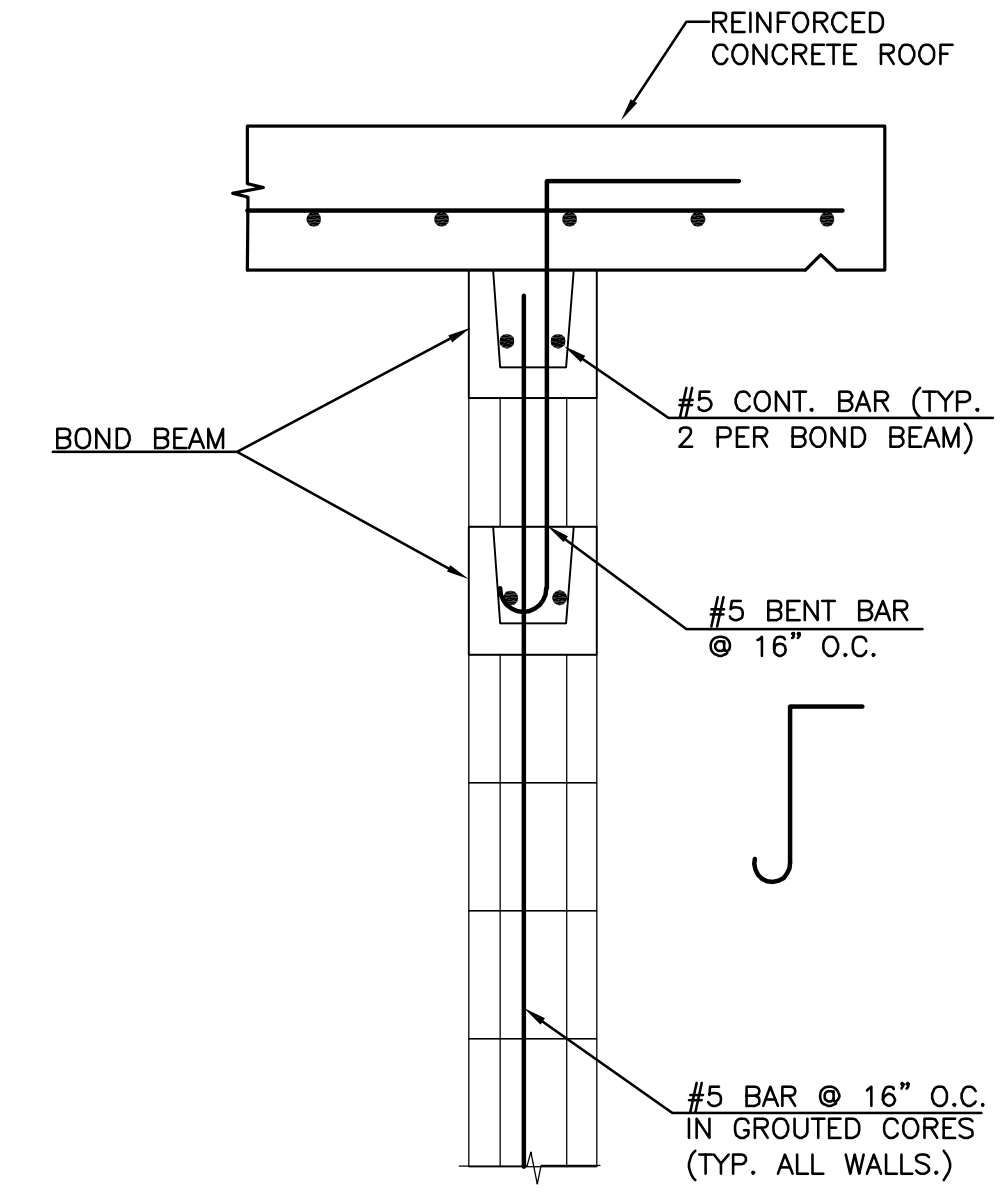
SCALE: 2"=1'-0"

* CAST 2" LIP AT CONCRETE PAD WITH DECK CASTING.



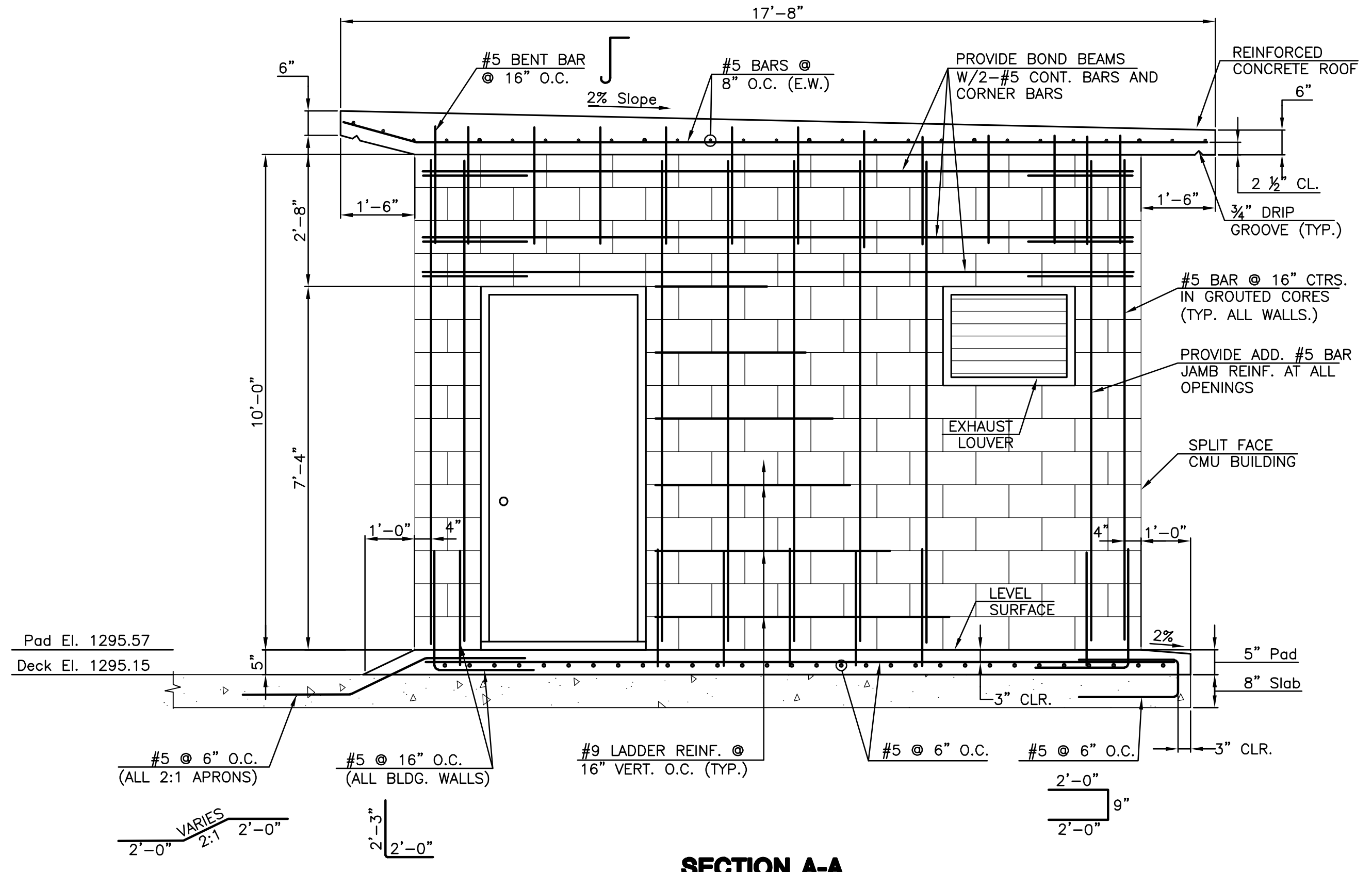
PLAN VIEW

SCALE: 1"=5'



**TYPICAL SECTION AT
OVERHEAD DOOR**

SCALE: 1"=1'-0"



SECTION A-A

SCALE: 1/2"=1'-0"

PLOTTED: Tuesday, January 25, 2011 @ 08:41 AM

J:\CIVIL\07433\DWG\DA\PLANS\07433 CTL HOUSE DTLS.DWG