

**LINCOLN STREET BRIDGE AND
DAM IMPROVEMENTS OVER
ARKANSAS RIVER**

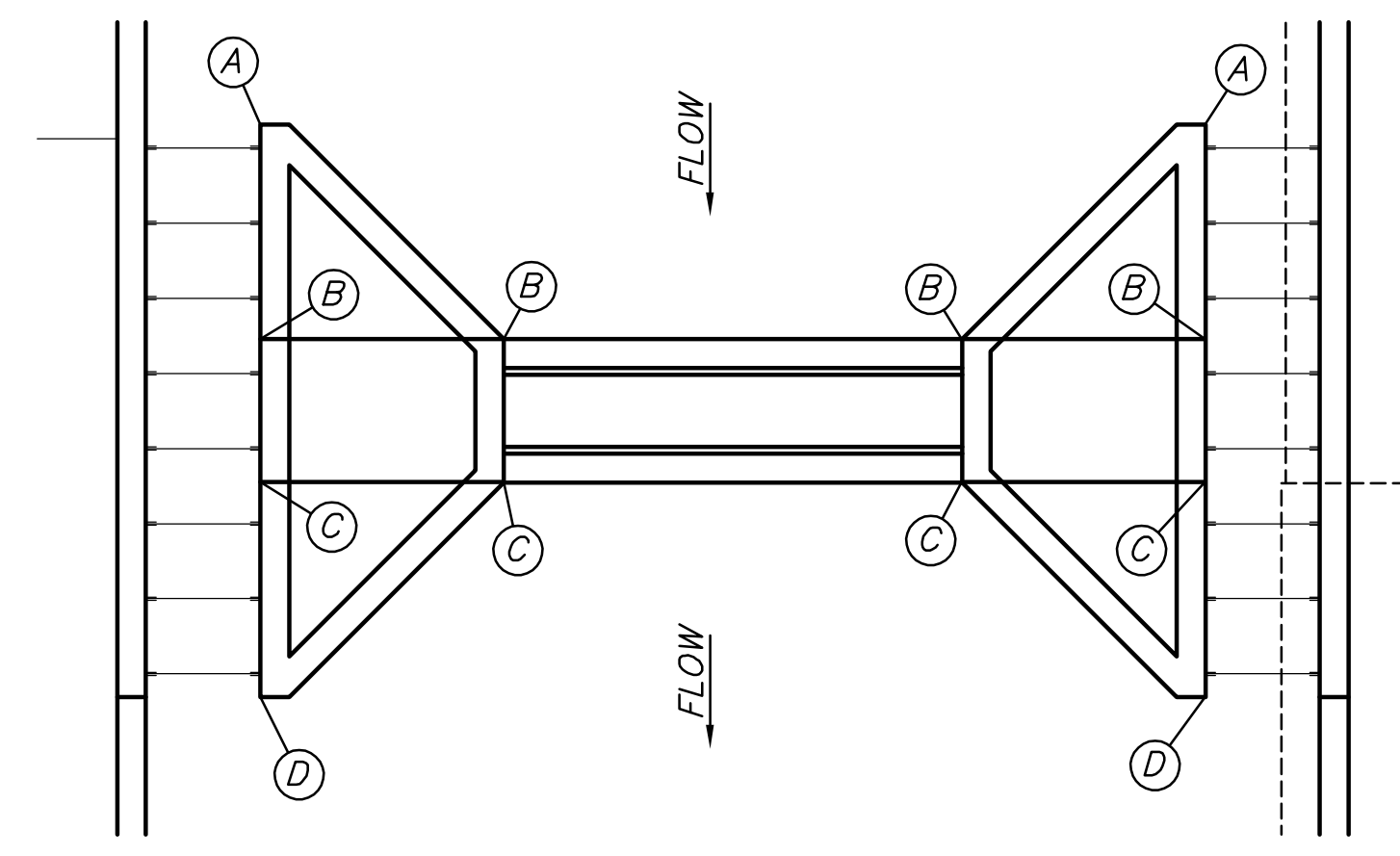
**BOAT/FISH
PASS
CHANNELIZER
DETAILS**
SHEET TITLE
472-84883
PROJECT NUMBER

JAG
DESIGN BY
DPG
DRAWN BY
CHECKED BY

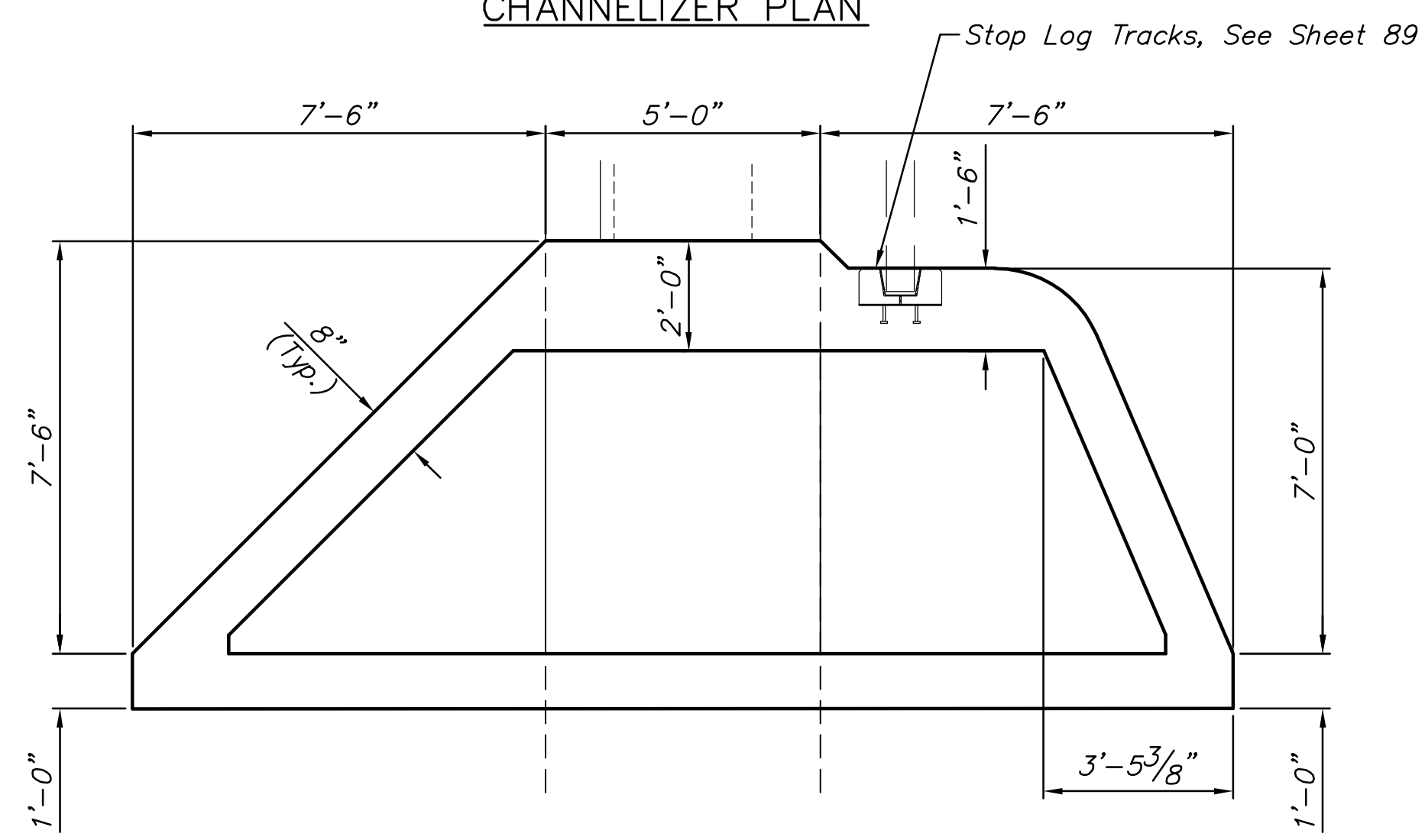
ISSUED
1/24/2011
REVISED

SHEET NO.
111 of 169

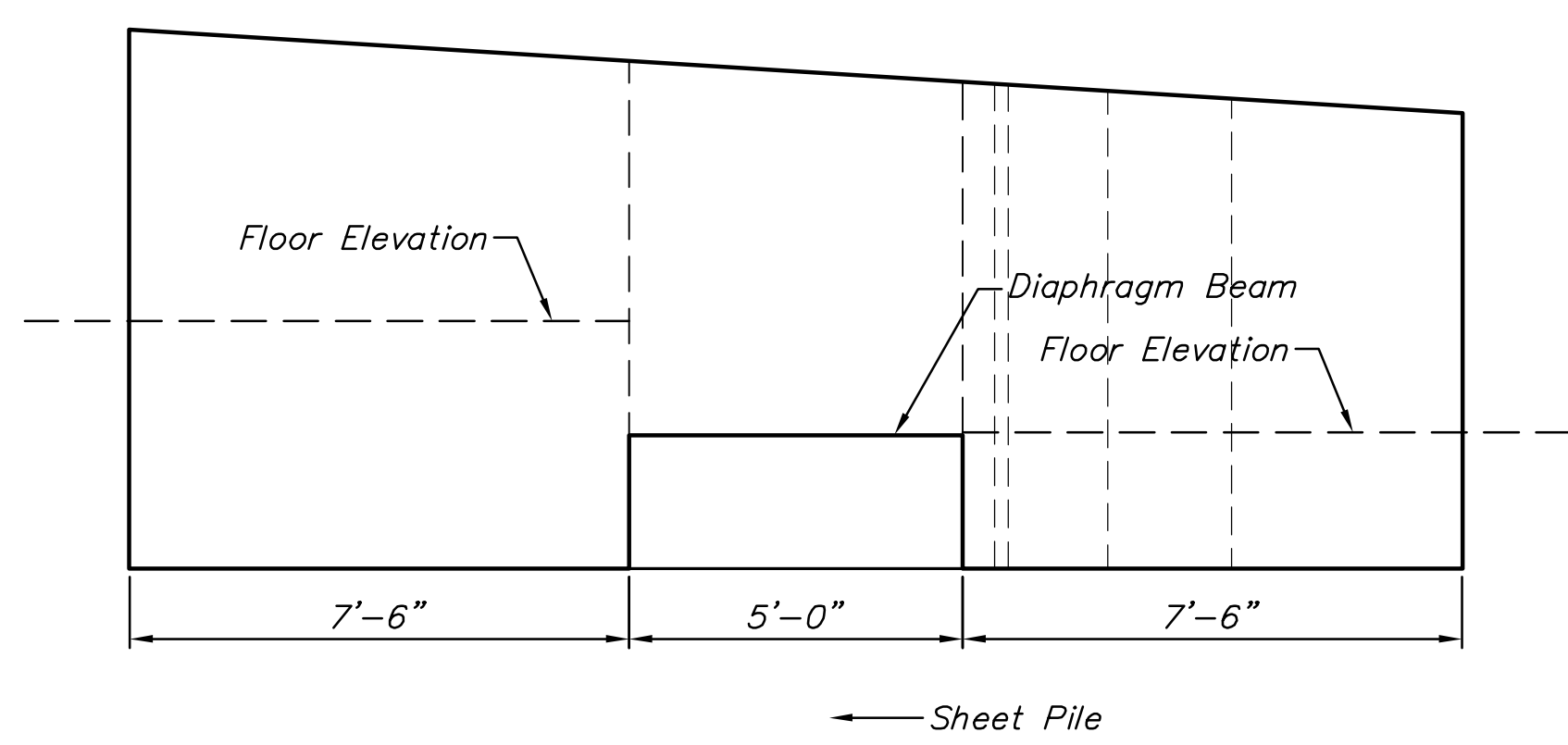
WEIR NO.	ELEV. PT. "A"	ELEV. PT. "B"	ELEV. PT. "C"	ELEV. PT. "D"	BOTTOM ELEV.
11	1285.33	1284.86	1284.55	1284.08	1277.25
10	1284.08	1283.61	1283.30	1282.83	1276.00
9	1282.83	1282.36	1282.05	1281.58	1274.75
8	1281.58	1281.11	1280.80	1280.33	1273.50
7	1280.33	1279.86	1279.55	1279.08	1272.25
6	1279.08	1278.61	1278.30	1277.84	1271.00
5	1277.84	1277.37	1277.06	1276.60	1269.75
4	1276.60	1276.15	1275.85	1275.40	1268.50
3	1275.40	1275.15	1274.99	1274.74	1267.25
2	1274.74	1274.65	1274.59	1273.50	1266.00
1	1274.50	1274.13	1273.87	1273.50	1263.50



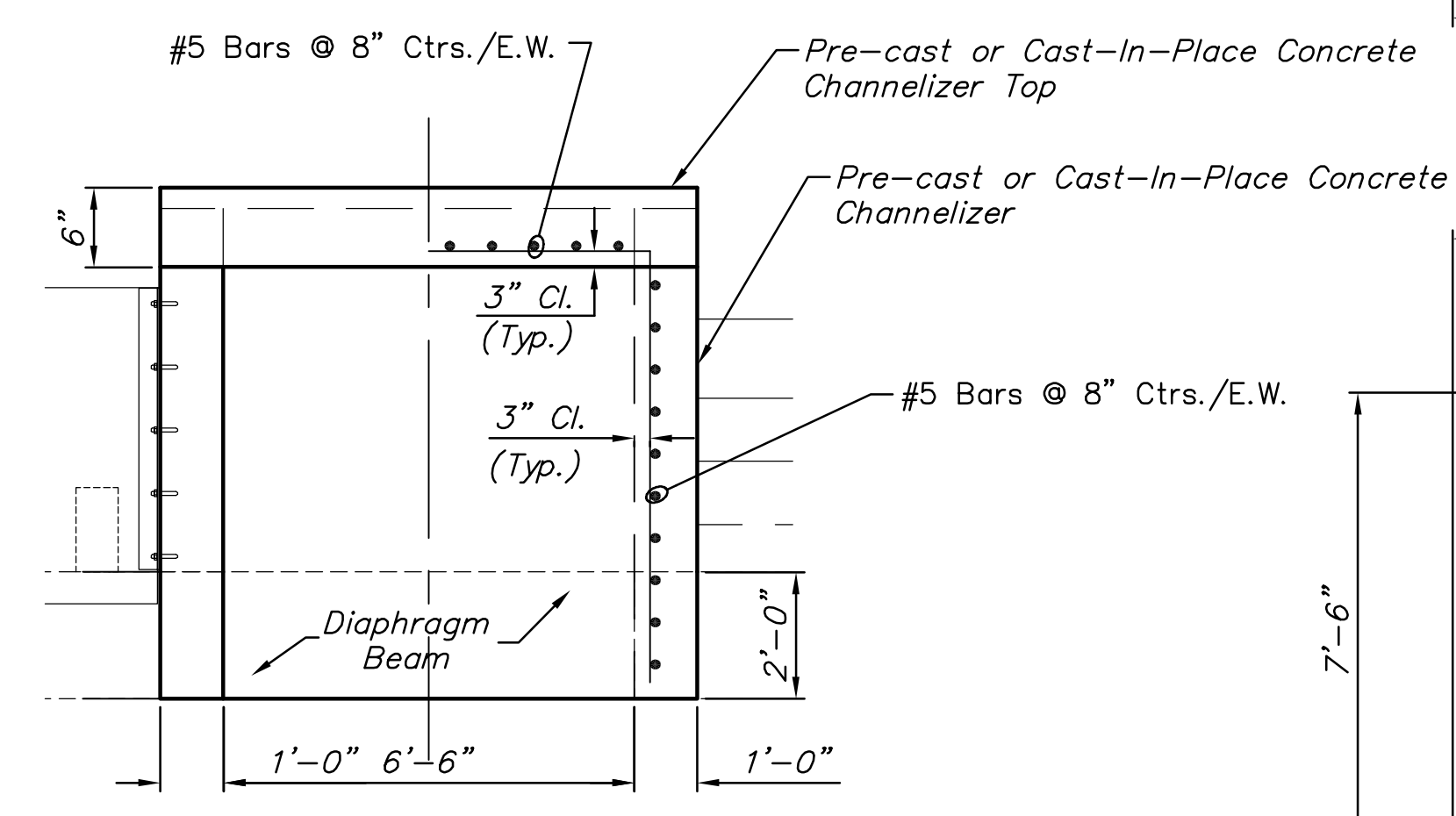
CHANNELIZER PLAN



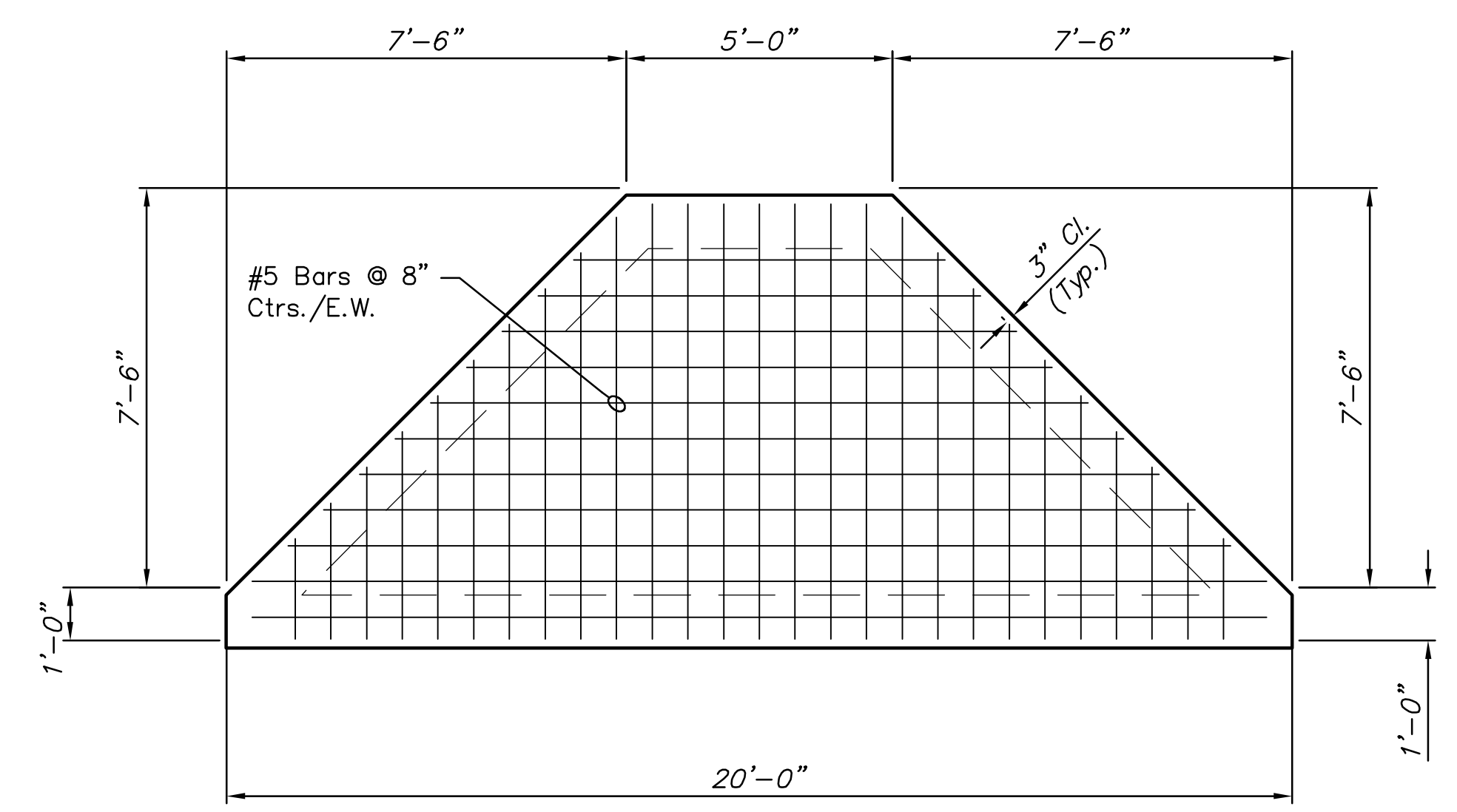
CHANNELIZER PLAN (AT WEIR NO. 11)



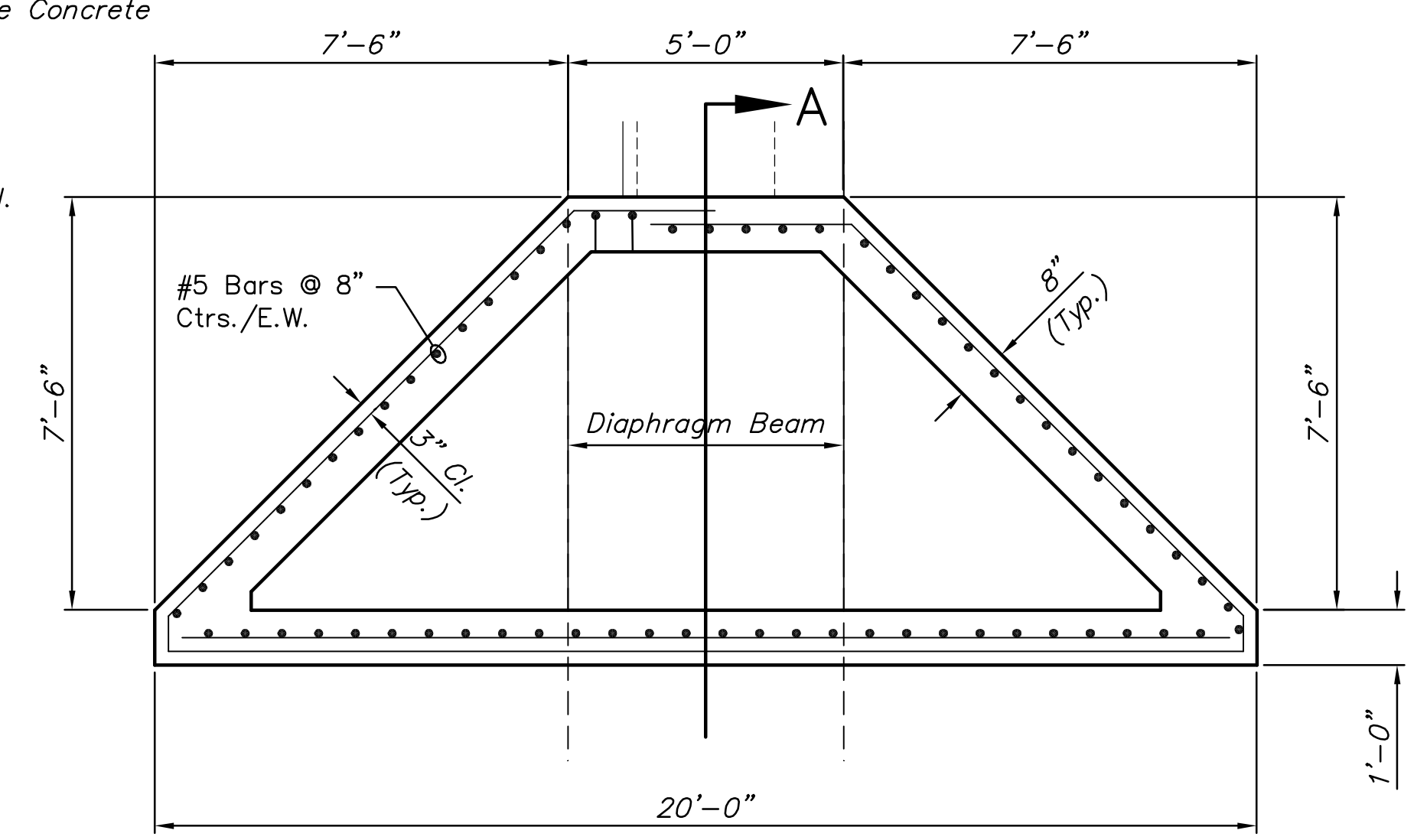
CHANNELIZER ELEVATION
WEIR NO. 11



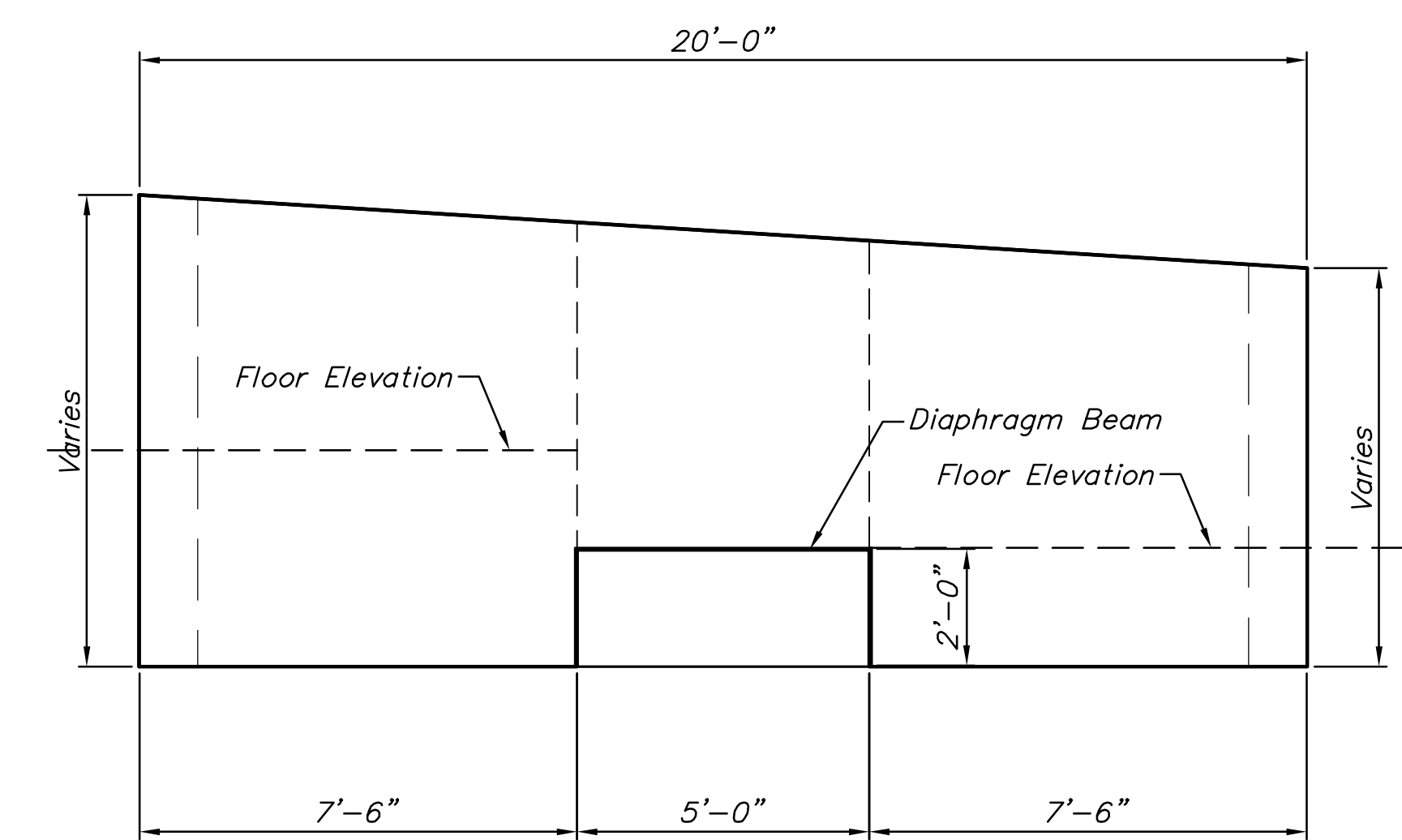
SECTION A
CHANNELIZER SIDE VIEW
WEIR NO. 1 THRU WEIR NO. 10



CHANNELIZER TOP



CHANNELIZER PLAN AT WEIR NO. 1 THRU NO. 10



CHANNELIZER ELEVATION
WEIR NO. 1 THRU WEIR NO. 10

GENERAL NOTES:
Shop Drawings stamped by a Kansas Licensed P.E. shall be Submitted for all Pre-cast Designs.
Reinforcing in Weir #11 is similar to the remaining Weirs.