

STATE	PROJECT NO.	YEAR	SHEET NO.	TOTAL SHEETS
KANSAS	87 N-0361-01	2010	148	169

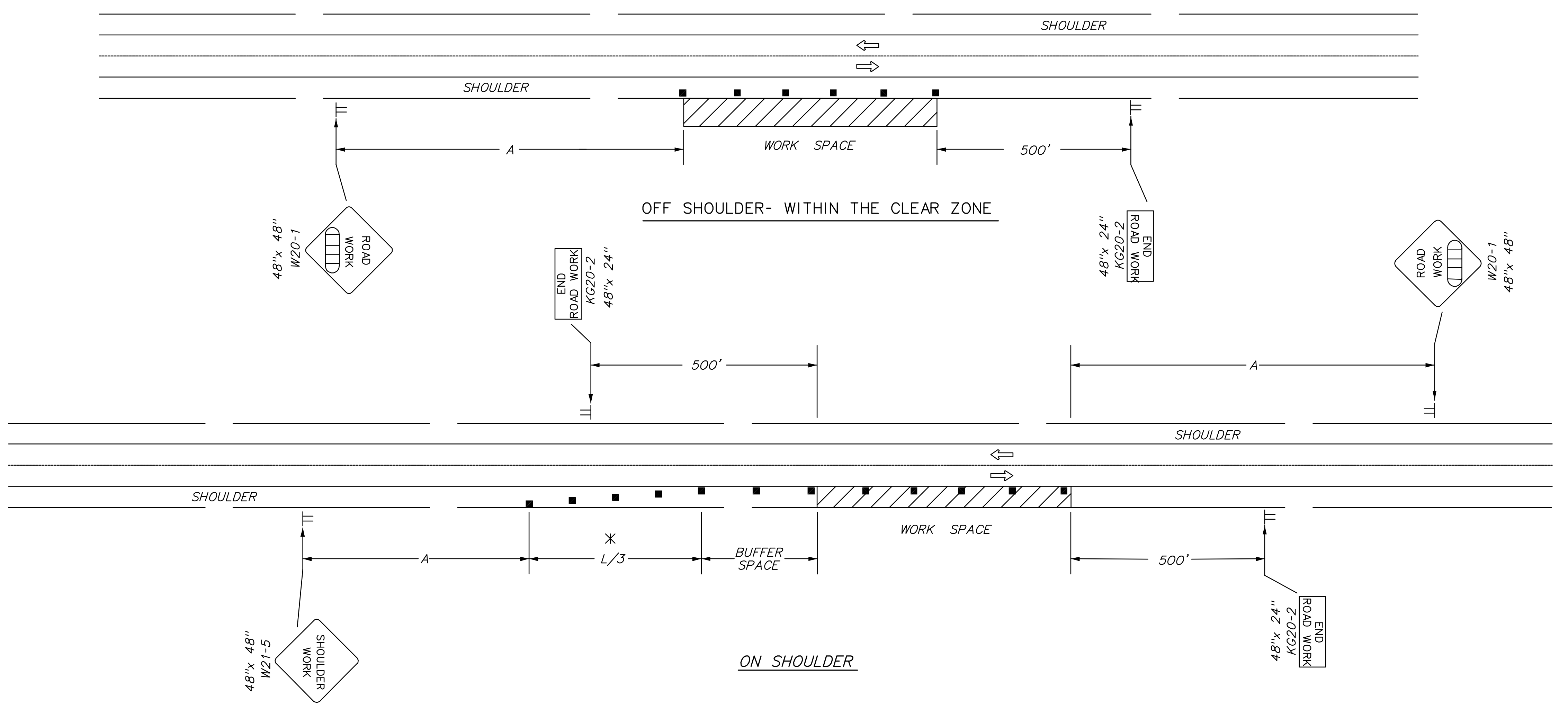
REFER TO STD. TE710 FOR ADDITIONAL INFORMATION ON TEMPORARY TRAFFIC CONTROL SIGNS AND SIGN SPACING.
REFER TO STD. TE702 FOR INFORMATION ON TAPERS AND CHANNELIZING DEVICES.
REFER TO STD. TE700 FOR LENGTH OF BUFFER SPACE.

NOTE:

NO TRAFFIC CONTROL IS REQUIRED IF THE WORK SPACE IS LOCATED OUTSIDE OF THE CLEAR ZONE.

FOR OPERATIONS OF 60 MINUTES OR LESS, ALL SIGNS AND CHANNELIZING DEVICES MAY BE ELIMINATED IF A VEHICLE WITH HIGH-INTENSITY ROTATING, FLASHING, OSCILLATING, OR STROBE LIGHTS IS USED.

WHEN CONCRETE BARRIER SYSTEM IS USED, PORTABLE CHANNELIZING DEVICES ARE NOT NEEDED ALONG THE TANGENT BARRIER SECTION. DELINEATION ON THE BARRIER SYSTEM IS STILL REQUIRED. SEE RD622.



* OMIT TAPER IF PAVED SHOULDER IS LESS THAN 8' WIDE.

■ Channelizing Device
□ AHEAD, 1500 FT, OR 1 MILE

J:\Civil\07433\dwg\DM\Details\07433 te720.dwg 08/24/2010 05:36:37 PM CST

3	4-20-09	COMBINED AND MOVED GENERAL NOTE	J.M.	A.A.A.
2	8-8-07	G20-2 CHANGED TO KG20-2	M.B.	A.A.A.
1	12-29-05	UPDATED END ROAD WORK SIGN DESIGNATION	M.B.	A.A.A.
NO.	DATE	REVISIONS	BY	APP'D

KANSAS DEPARTMENT OF TRANSPORTATION
TYPICAL TRAFFIC CONTROL
WORK ON OR NEAR THE SHOULDER
UNDIVIDED HIGHWAY (2 OR 4 LANE)
TE720 9/1/00

DESIGNED	L.E.R.	APP'D	Anthony A. Alrobaire
DESIGN CK.	DETAIL CK.	QUANTITIES	TRACED
		QUAN. CK.	TRACE CK.