

# SANITARY SEWER TO SERVE LOT 1, BLOCK 1 DUGAN INDUSTRIAL SECOND ADDITION 1430 PPS (607861) WICHITA, KANSAS JIM ARMOUR, P.E., CITY ENGINEER

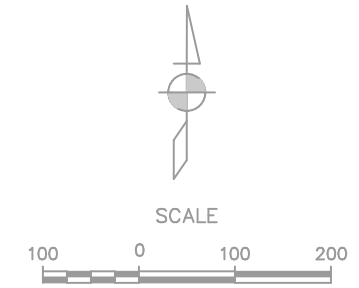
**GENERAL NOTES**

1. Contractor will be required to provide notice to utility companies a minimum of twenty-four (24) hours prior to any excavation, as follows:

- |   |  |
|---|--|
| Southwestern Bell Telephone Co.<br>154 N. Broadway<br>Wichita, Kansas 67202<br>Bob Alley<br>316-268-2245                        | Wichita Sewer Maintenance Div.<br>Water & Water Pollution Control Dept.<br>8th Floor, City Hall<br>455 N. Main St.<br>Wichita, Kansas 67202<br>Steve Lashley<br>316-268-4624 |
| Kansas Gas & Electric Co.<br>1900 E. Central<br>Wichita, Kansas 67214<br>Randy Truitt<br>316-261-6251<br>(Electric)             | Cox Communications<br>701 E. Douglas<br>Wichita, Kansas 67202<br>Brian Ring<br>316-262-4270 x.169  |
| Wichita Water & Sewer Dept.<br>8th Floor, City Hall<br>455 N. Main St.<br>Wichita, Kansas 67202<br>Bill Perkins<br>316-268-4555 | Kansas Gas Service<br>1021 E. 26th North<br>Wichita, Kansas 67219<br>Charlene Lawless<br>316-383-8600 or 316-832-3177  |
| Aquila Network (Gas)<br>1611 S. Hoover<br>Wichita, Kansas 67209<br>Calvin Briggs<br>316-941-7233                                | Kansas One Call<br>800-344-7233  |
|   | Dig Safe<br>316-687-2470   |
|   | Emergency 911  |

The Contractor must notify the following in case of an emergency:

- All improvements shall be installed in accordance with City of Wichita, Kansas Standard Specifications for Sanitary Sewer Construction.
- Contractor shall not start work on the project until the project inspector is assigned to the project and is present on the site. Any work done without inspection will be required to be uncovered for inspection.
- Underground utility service lines and overhead utility pole lines are to be adjusted as necessary by others prior to construction, unless the plans specifically call for their locations, as shown on the plans, represent the best information obtainable for design. Location information has been obtained from the various utility companies and is either from company record drawings or company-provided field locations. The Contractor will be required to work around existing utilities within the right-of-way which do not conflict with proposed construction.
- The contractor shall be responsible for preserving property irons. The Contractor will be required to re-establish any property irons which are damaged or destroyed by his construction operations. Such irons shall be re-established by a licensed land surveyor in accordance with state law.
- All areas disturbed by construction operations shall be seeded with rye grass at a rate of 300 lbs/acre immediately following construction in that area. Ground shall be prepared per City of Wichita specifications prior to seeding.
- Contractor shall verify the location of all utilities prior to beginning construction.



**SHEET INDEX**

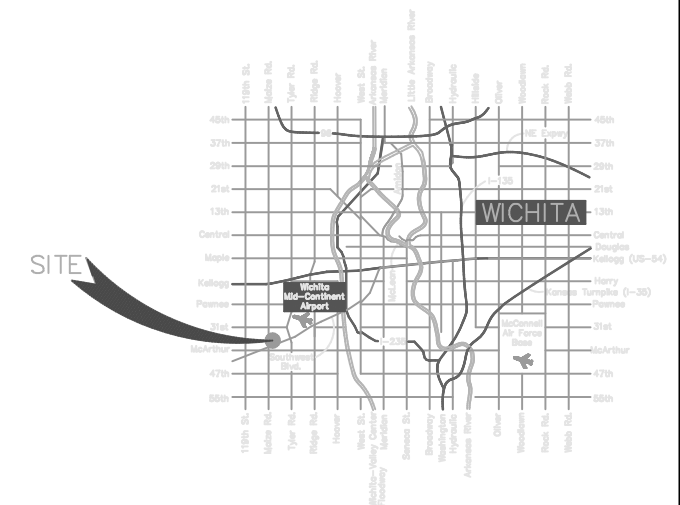
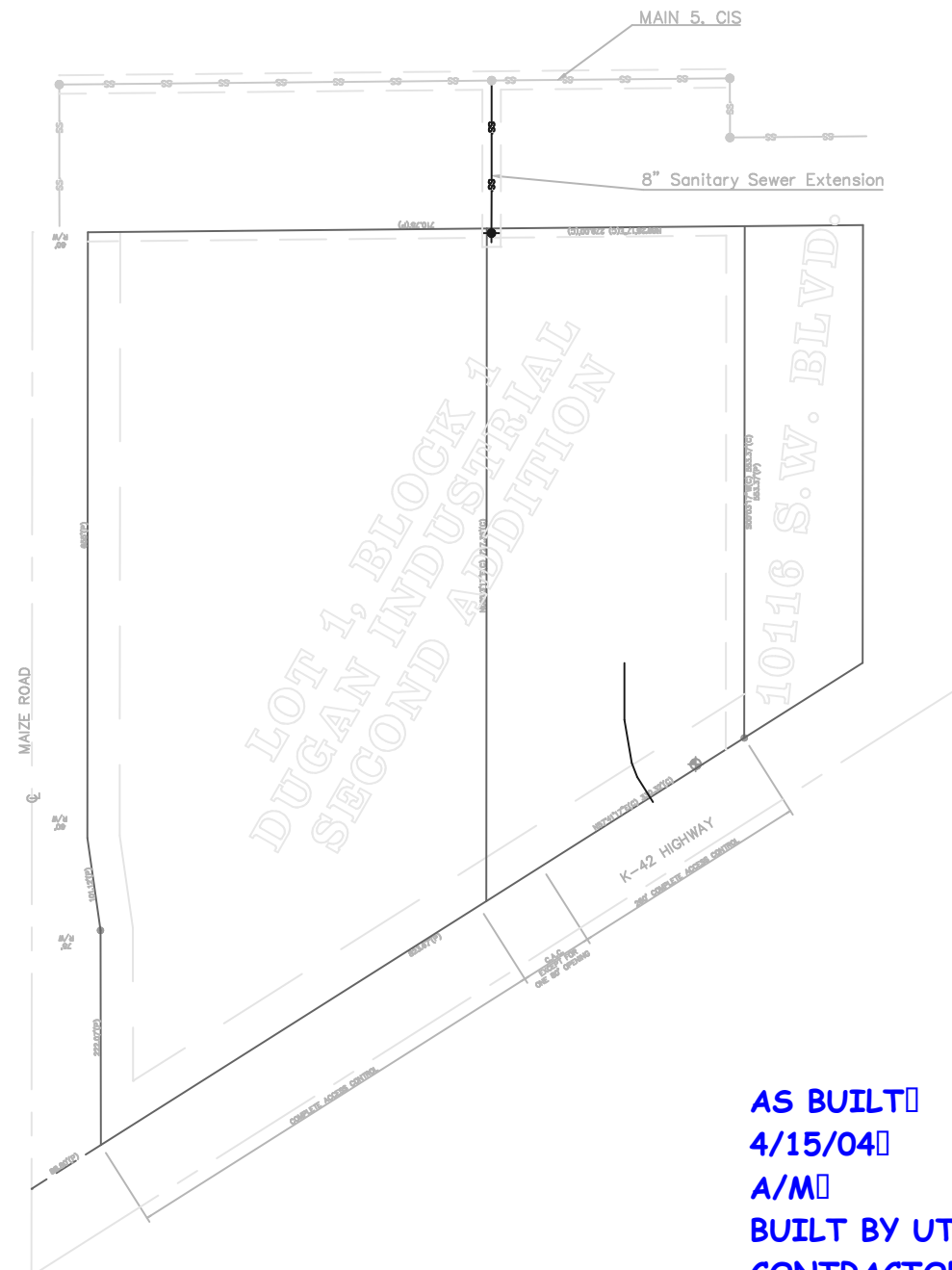
- Title Sheet
- Std. Type 'P' Manhole Details
- Plan & Profile

**ON-SITE BENCHMARK:**

"□" On Top of SW Corner of Concrete Drive  
approx. 1000' NE of K-42 & Maize Rd.  
Elevation = 100.00 (assumed)  
Elevation = 1331.42 (144.02 City Datum)

**OFF-SITE BENCHMARK:**

RR Spike on South face of Power Pole ●  
SW Corner of Lot 2, Block A, Mid-Continent Industrial Park 2  
Elevation = 1325.68 (138.28 City Datum)



**VICINITY MAP**

APPROVED AS NOTED  
BY CITY ENGINEER OF WICHITA

---

SANITARY SEWER \_\_\_\_\_

NOTE TO CONTRACTORS:

**PUBLIC PROPERTY**  
Inspection and testing for the waterline is to be provided by a licensed consulting engineering firm under contract with the Owner/Developer. Said inspection to be in accordance with the City of Wichita standard construction engineering practices and certified by a Licensed Professional Engineer. No work shall be performed in dedicated easements or public right-of-way by the contractor without such inspection nor shall any work be commenced without written authorization by the City Engineer. All Construction and Materials shall comply with the City of Wichita Specifications and Standards (on file and available in the City Engineer's Office).

**AS BUILT** □  
**4/15/04** □  
**A/M** □  
**BUILT BY UTILITY** □  
**CONTRACTORS** □

FILENAME: 03123-02-ppacov

**AM CONSULTING**  
ENGINEERING DIVISION  
142 N. Emporia Wichita, KS 67202  
316/268-2870 fax 316/268-2839



SCALE



### LEGEND

- ☒ = 3/4" Iron Pipe PEC cap (found)
- AMINC SET = 5/8" Rebar AMINC CLS #104 (set)
- (C) = Calculated
- (P) = Platted
- R.O.W. = Right-of-Way
- ⊕ = Fire Hydrant
- ♿ = Handicap Parking
- ⚡ = Light Pole
- MH = Manhole
- ⊙ = Parking Stall
- ss — = Sanitary Sewer
- W — = Water
- ⊙ WM = Water Meter
- ⊙ WV = Water Valve
- CO = Cleanout

**CONTROL POINTS**  
 CONTROL POINT #1 N=10669.06  
 E=19973.69  
 CONTROL POINT #2 NE CORNER LOT 1, BLOCK 1  
 DUGAN INDUSTRIAL 2ND ADDITION  
 N=10671.63  
 E=20252.69

